

## STATE MARKET AGT. WARNS POTATO MEN

(By State Market Agent.)

In some potato growing localities a blight or disease has attacked the early stock and many of the potatoes are black or chocolate colored, and after being dug they rot down. These potatoes are unfit for food and those selling them are liable to severe penalties under the pure food law. State Market Agent Spence warns all dealers in potatoes to be certain that the sack branding law is complied with when they purchase, that the responsibility may be determined in case of diseased stock; otherwise the dealer or retailer might be prosecuted for both failure to have growers' name on the sack and for selling unfit food. No sack of potatoes may be legally sold or offered for sale in Oregon unless the sack is stenciled with the grower's name or that of the association offering it for sale.

### Gresham Concern Growing.

The Berry Growers Packing company of Gresham is a going concern, according to its reports. During the past year its membership has increased 25 per cent and its volume of business is growing. Last year it handled two and a half million pounds of fruit, of which a million and a half were red raspberries. Loganberries, strawberries, blackberries, cherries and pears are handled and large quantities of the berries are barreled and frozen. Payment to growers last year totaled \$220,841.

### Unorganized, Little Power.

Organized manufacturers demand protection and congress gives it to them and through the power of organization they are able to fix and maintain prices. Union labor is organized and it has the power to demand protection against foreign immigration, also to fix wage scales and maintain them. But farmers, over thirty million weak, are compelled to buy at the fixed prices of the manufacturers and let the middle interests fix the prices of the products they raise. They are practically unorganized, hence their dollars do not buy as much as other Americans. "It is impossible to organize farmers," is the often heard statement. Labor at one time thought the task of organizing

all the different trades was impossible. And it was the biggest investment the worker ever made. It would seem that farmers will have to organize solidly to hold their own in this day of organizations and combinations.

### A "Federated" County.

Umatilla county has 235,000 acres of wheat this year and 200,000 acres are Federated. It is one of the few wheat raising counties of the northwest to standardize and it is a main supply source for Federation seed wheat for Oregon, Washington and Idaho.

### Farmers' Incomes Shrinking.

In the years 1924-25 direct taxation on farms in the United States increased 236 per cent over the average from 1909 to 1914, while during the same period the relative increase in the farmers' income was only 100 per cent. The ratio of indebtedness to value of farms has now risen to about 40 per cent, as compared with 29 per cent of five years earlier.

### Don't Take the Chance.

Under state law there is both fine and imprisonment provided for selling potatoes in Oregon unless they have been graded and the grade and the seller's name are stenciled on the sack. No farmer or retailer can afford to take the chances of selling without complying with the law. Grades and regulations may be had by addressing the State Market Agent, 712 Court House, Portland.

## The Strenuous Week-End.

From State Board of Health.

This is the season when on Friday nights or on Saturday noons one sees the roads filled with motor cars, and trains and busses packed with happy people all going away from town for the week end. On Sunday night or Monday morning the same people come trooping back to town, many of them haggard and worn. The "call of the wild" is irresistible to most people and is one which all of us, who are enslaved by our desks in the cities, can well afford to heed for a day or two each week. But why not be sensible about it? Just because you are going to the seashore or to the woods, is no reason for overdoing it.

Although exposure to the sun is recognized as a measure of great value in treating some diseases, going to the beach and lying on the sand for the main purpose of getting sun-

burned is foolhardy. The effects of sunburn, aside from disabling a person, at times results in conditions dangerous to health. Acquire your sunburn and tan gradually and by the end of the summer you will be just as brown and will not have been laid up for a few days with a severe burn nor will you have run any risks to your general health.

Many people take long trips over the week end, camping out at night. This may be a recreation, but often it is hard work. If you are soft, don't try to do too much. If you intend to camp out at night, be sure to provide the necessary equipment. Don't carry a lot of needless truck. After you have discarded everything that isn't essential, go over your pack again and thoroughly check the necessary articles.

At all times be careful of the water you drink. Remember that clear, sparkling, running water is not always safe. Often it is dangerous. The safest policy is to boil all drinking water unless you know it is of good sanitary quality.

Many of us city-living individuals are unable to stand the strenuous life of the open air and the sunshine until we have become a little accustomed to it. A hothouse plant cannot survive the ordeal to which nature puts the hardy perennial. Most of us are too soft to warrant exertion of a strenuous week end until we have gone through a gradual hardening process. Use up your reserve by getting the most out of your week end. Sleeping out of doors, moderate hiking and roughness, will do much to improve your general health and make life worth while.

## Highway Association Puts Out Fine Folder

A concrete evidence of the practicality of the movement to give joint publicity to the attractions of the entire Pacific Coast, including California, Oregon, Washington and British Columbia, is given in the 96-page beautifully illustrated booklet just issued by the Pacific Highway association of California. This is the most attractive bit of tourist literature for the Pacific Coast ever issued and contains several features unique in that sort of publicity. It is devoted to the attractions along the route of the Pacific Highway from San Diego to Vancouver and Victoria, B. C., but as that is the great artery of north and south motoring, the very backbone of travel by automobile up and down the

Pacific coast, it necessarily comprehends most of the great attractions of this region.

The Pacific Highway is the world's longest paved motor route. It has along its great length every variety of scenery the Pacific Coast offers, among them a number of natural wonders unique in all the world. For over 1700 miles it is a continuous panorama of beauty and surprise, witnessed in the greatest of comfort of climate and good road, with all the accessories of safe and delightful touring, such as fine hotels, well-equipped auto camps, garages and service stations. It passes through ten great cities, San Diego, Los Angeles, San Francisco, Oakland, Sacramento, Portland, Tacoma, Seattle, Vancouver and Victoria.

There are hundreds of miles of ocean shore drive, with innumerable bathing beaches, beautiful mountain passes and valleys, vast areas of gardens and orchards, groves of California's giant redwood trees, the only active volcano in America, a dozen high peaks of perpetual snow, marvelous Crater lake, the wonderful Oregon caves, the famous scenery and waterfalls of the Columbia river, two national parks and two national monuments, the entrenchments of Puget Sound, "the summer playground of the Pacific Coast," the charm of Burdard Inlet, the Gulf of Georgia and Vancouver Island, with lakes and streams innumerable, all abounding in trout.

All this is revealed by over a hundred fine halftone pictures and interesting descriptive text, with road maps of the entire route. A feature that will be appreciated by all tourists is a glossary of names from end to end of the route, telling how to pronounce them and what they mean. Another feature the tourist will appreciate is the luncheon dates of the Rotary, Kiwanis, Lions and Exchange clubs and of chamber of commerce forums. The cover is a beautiful design in four colors suggestive of the scenery along the highway.

This help to tourists is being distributed to all chambers of commerce, automobile club offices and information bureaus free.

Dr. B. F. Butler, formerly located as a dentist in this city, but of recent years living at Monmouth, has moved to Portland where he is now associated with the New York Dentists at Fourth and Morrison streets.

**NOTICE TO CREDITORS.**  
IN THE COUNTY COURT OF THE STATE OF OREGON FOR MOR-

**ROW COUNTY.**  
In the Matter of the Estate of Robert J. Buschke, Deceased.

The undersigned having been appointed by the County Court of the State of Oregon for Morrow County, administratrix of the estate of Robert J. Buschke, deceased, notice is hereby given to the creditors of, and all persons having claims against said deceased, to present them verified as required by law, within six months after the first publication of this notice to said administratrix at the office of C. L. Sweek, her attorney, at Heppner, Oregon.

**LORENA BUSCHKE,**  
Administratrix of the estate of Robert J. Buschke, deceased.  
Dated and first published July 22, 1926.

**NOTICE TO CREDITORS.**  
IN THE COUNTY COURT OF THE STATE OF OREGON FOR MOR-

**ROW COUNTY.**  
In the Matter of the Estate of G. D. Coats, Deceased.

The undersigned having been appointed by the County Court of the State of Oregon, for Morrow County, administratrix of the estate of G. D. Coats, deceased, notice is hereby giv-

en to the creditors of, and all persons having claims against said deceased, to present them verified as required by law, within six months after the first publication of this notice to said administratrix at the office of C. L. Sweek, her attorney, at Heppner, Oregon.

**MARY E. COATS,**  
Administratrix of the estate of G. D. Coats, deceased.  
Date of first publication July 15, 1926.

**Mine's In!**  
**NEXT WINTER'S COAL**

**Is Yours?**  
**TUM-A-LUM LUMBER CO.**  
Heppner, Lexington, Ione

## Will You Be There

—when success pays dividends?

Success pays dividends frequently in increased happiness, greater comforts and luxuries of life. Do you receive your share?

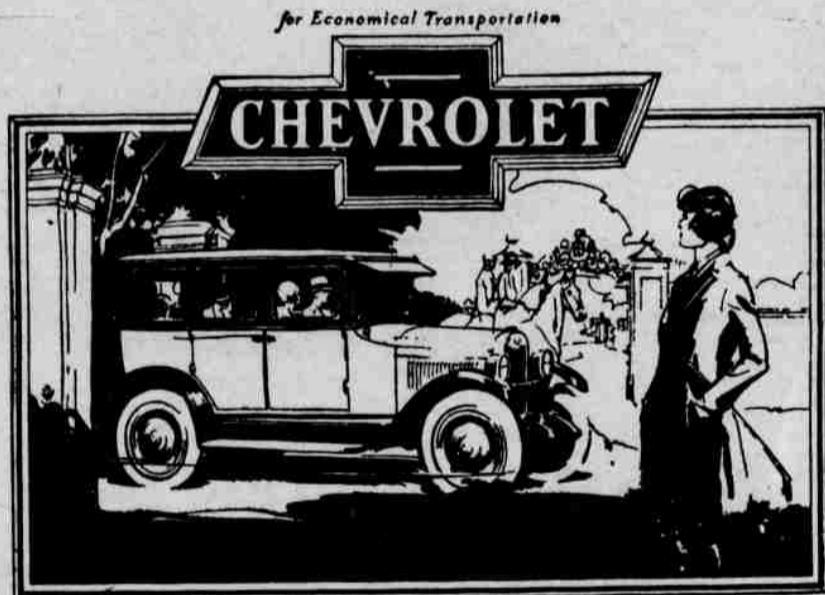
You can if you wish. All that is necessary is to make regular easy payments in the form of deposits in a savings account in this bank.

As soon as you do that, you will find the dividends of success coming to you more frequently and satisfactorily than ever before.

It's easy to win success dividends this way. Saving on a definite system is remarkably easy, and you'll like the convenience of our service.

Come in soon, and let us tell you of our plan for your success. Let us show you how your account here may be of great help to you.

**Farmers & Stockgrowers National**  
Heppner Bank Oregon



# The Smoothest Chevrolet in Chevrolet History!

Multiple-Cylinder Performance with Chevrolet Economy

- at these **Low Prices!**
- Touring or Roadster **\$510**
  - Coach or Coupe **\$645**
  - Four Door Sedan **\$735**
  - Landau **\$765**
  - 1 Ton Truck **\$495**  
Chassis Only
  - 1/2 Ton Truck **\$375**  
Chassis Only
- All prices f. o. b. Flint, Mich.

Into the field of low-priced cars the smoothest Chevrolet in Chevrolet history brings exactly the velvet acceleration and freedom from high-speed vibration that have been the big reasons for the buying of multiple-cylinder cars.

Imagine loafing up a hill in a loaded car—with the motor turning so easily that you are scarcely aware of its operation. *You can in the smooth Chevrolet!*

Imagine rushing from 10 to 30 miles an hour before your watch ticks ten times—with never a semblance of labor on

the part of the motor. *You can in the smooth Chevrolet!*

Imagine being able to drive between 40 and 50 miles an hour for hour upon hour—in perfect comfort, entirely free from any sense of excessive speed and unconscious of even the slightest roughness in the road. *You can in the smooth Chevrolet!*

Learn for yourself the incredible smoothness that is winning the world to Chevrolet. Arrange to see and drive the car today! and come prepared for a ride the like of which you never dreamed possible in a car that sells at Chevrolet's low prices!

**Ferguson Chevrolet Co.**  
Heppner, Oregon

QUALITY AT LOW COST



## Why pay a small fortune for pipe tobacco?

THERE'S NO NEED to slap a mortgage on the old homestead every time you buy pipe tobacco. No sir! Not now, when Granger Rough Cut adorns the shelves of tobacco-shops everywhere.

A few years back, good tobacco *did* cost a fortune. In those days Granger, too, would have been expensive. But today, thanks to large-scale buying, new machinery and more economical packing, it's possible to sell this extraordinary tobacco most reasonably.

All ripe old Burley... the choicest pipe tobacco known to man. Mellowed by the same recipe that made Jim Wellman famous back about 1870. It's cut especially for pipes, too... in large flakes that burn slowly, and so (underline this) *it smokes cooler...* by several degrees!

Cool... spicy... mild... and mellow! No man ever smoked any better pipe tobacco. Not on this planet, anyhow!

## GRANGER ROUGH CUT

The half-pound vacuum tin is forty-five cents, the foil-pouch package, sealed in an air-tight glass-tine wrapper, is ten cents



Granger Rough Cut is made by the Liggett & Myers Tobacco Company