

THIS IS THE PROPER WAY TO SHEAR A SHEEP

Read Clockwise

The pictures, with printed instructions illustrate and describe briefly a system of shearing sheep that has been developed by the thousands of professional shearers of America and Australia.

While slight modifications in the directing of the strokes taken with the shear are made by different shearers, the beginner should follow the instructions as closely as possible.

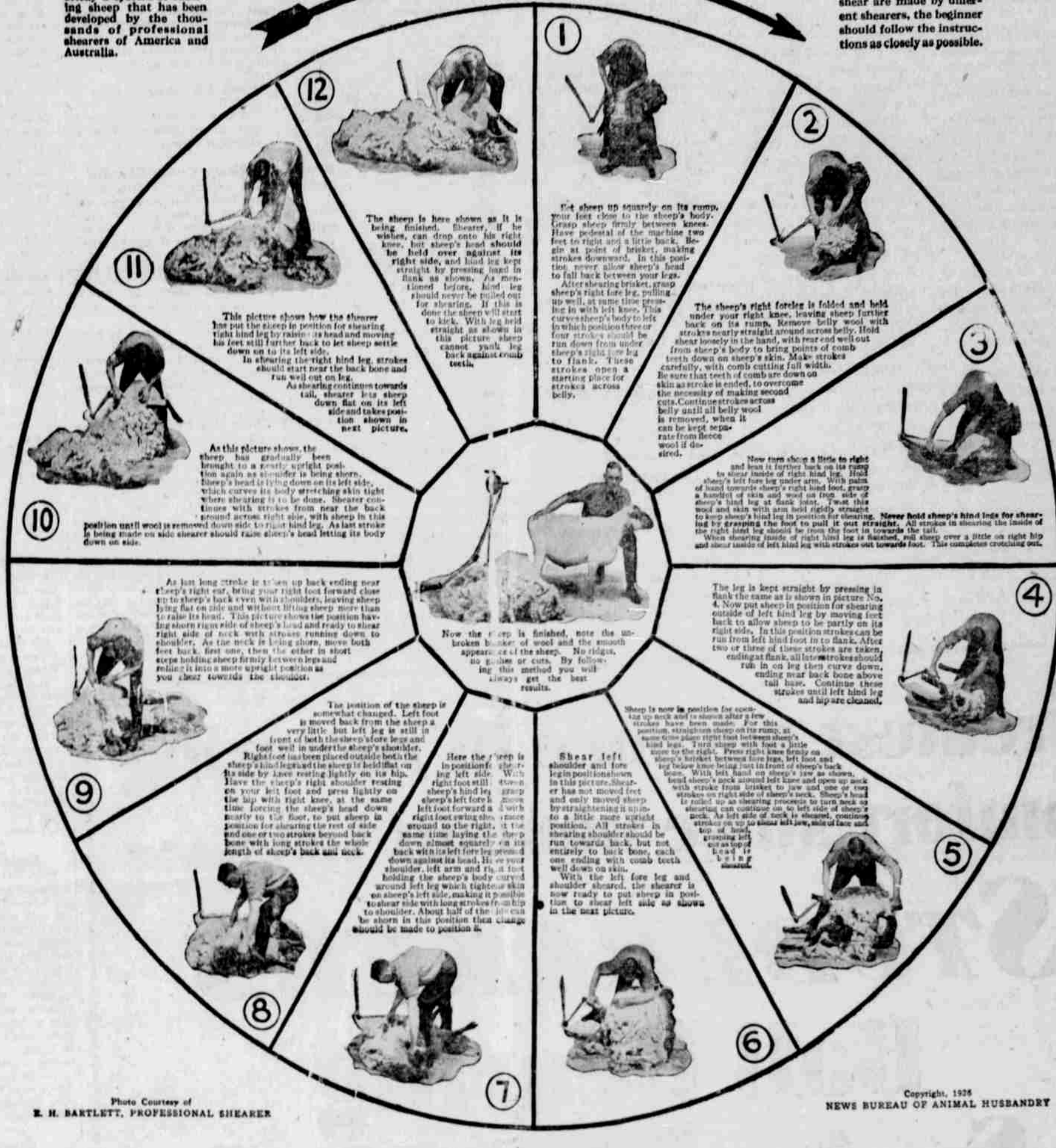
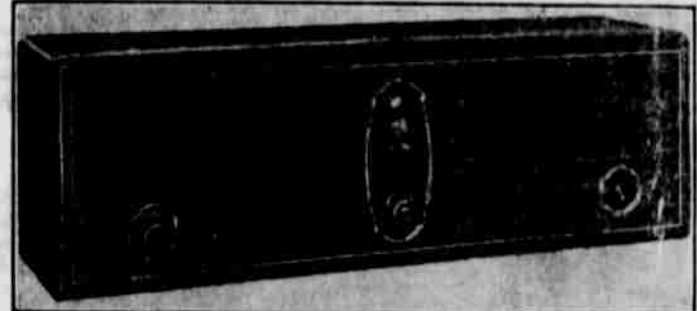


Photo Courtesy of E. H. BARTLETT, PROFESSIONAL SHEARER

Copyright, 1925 NEWS BUREAU OF ANIMAL HUSBANDRY

NEW SOCKET-POWER RECEIVERS MEET WITH FAVORABLE RESPONSE



The new socket-power receivers are fast replacing the old type set. The simple form of turning on the light switch now supplies an inexhaustible source of uniform power. One of the new and improved socket-power receivers recently announced is the Radiola No. 18. In speaking of it, Mr. J. L. Ray of the Radio Corporation of America said, "It is entirely self-contained and extremely compact, requires no batteries or external radio power units, but plugs directly into the nearest A-C electric light socket or outlet. With simplified precision tuning, substantial volume and realism of tone, and finely balanced sensitivity and selectivity, this new receiver has all the basic features to make it an outstanding success. "In addition, laboratory technicians have further improved selectivity so that sharper tuning is provided with

the new receiver. An improved form of tuned radio-frequency circuit is employed, comprising three stages of radio-frequency amplification, detector, and two stages of audio-frequency amplification. "The operation has been reduced to the simplest form. A power switch turns the set on and off. The current drain from the electric light line is no greater for the new receiver than for the usual 50-watt lamp. Tuning is accomplished entirely by one knob, while an indicator dial moves past a window in the panel. The volume intensity is controlled by a simple, volume control to meet the specific tastes of the listener. "This new receiver represents the latest developments in the broadcast reception art, which mass production has made available at a price well within the reach of the average family."

The Corvallis fruit cannery has already used 200 tons of soap this year. We sell everything to write with and to write on. Bullard's Pharmacy

FOR SALE
1 ton Ford truck. Good condition. Price \$150.00 Call or write T. C. Troge, Ione, Oregon.

Origin of Basket Ball

In 1891 a lecturer on psychology in the training school of the Young Men's Christian association at Springfield, Mass., speaking of the mental processes of invention, proposed the example of a game with its limitations and necessities. The same night James Naismith, a member of the class, worked out basket ball as an ideal game to meet the hypothetical case, and the next day in the lecture room it was put in practice with the aid of the members of the gymnastic class. Thence it spread to other branches of the Young Men's Christian association, and in two or three years to other athletic clubs and to the general public.

Fingerless Families

The story is that the great-great-grandmother, when she was young, told a lie about an apple, whereupon her parents threatened her with a curse that her children later on would be born with deformed hands. Whether it is true or not, the family of whom the story is told have for four generations suffered from a curious deformity. Ten members have had something wrong with their fingers, some having only two joints instead of three in some of the fingers, others having no finger-nails, and one or two being without fingers at all.—London Tit-Bits.

Male Long Imprisoned

When his mule disappeared, Dan Darling, pioneer farmer of Nixon, Texas, started a fruiting search for him, without avail, even putting out postcards with a reward for his return. Two weeks later, he happened to cross a dry creek in the middle of his pasture, and found the mule wedged in between two banks in such a way that he could not get out. Darling procured help, and released the mule, which had not suffered much in spite of his long stay without food or water.—Indianapolis News.



Transatlantic Telephone Control Room in New York City



Switchboard Operators at New York Who handle Transatlantic Telephone Traffic

Automatic

One of the Los Angeles furniture stores has a new davenport that they call "Cupid's Retreat." It looks very much like most other davenports but unwary bachelors are warned. "Why do you call it 'Cupid's Retreat'?" a visitor ventured to inquire. "The upholsterer is quite thin," explained the salesman, "and by the end of a year it is sure to be worn through, thereby displaying the sign: 'It's time to get married.'"

MATERNITY HOME

At the residence of Mrs. Ethel Ritchie, Second Street, Ione. Experienced nurse; reasonable rates. Call or address Mrs. Ethel Ritchie, Ione, Oregon.

Pyramid Built Eight Thousand Years Ago

Perhaps the oldest monument in America is Culicillo (Meeting Place for Singing and Dancing), a three-tier pyramid, which is only half an hour by motor from Mexico City. Prof. Byron Cummings of the University of Arizona recently undertook the excavation of this mound at the request of Dr. Manuel Gamio and with the assistance of the Mexican government. The