

CECIL NEWS ITEMS

June 7th, Cecil just crawling out of the worst cold and wind storm which lasted ten days. Every man, woman and child rubbing sand out of their eyes to find out where they are. Housewives all on strike and sitting in despair and wondering if there are men grumpy enough to handle the business around the happy houses and restore order once more. The storm hit Cecil June 8 and 9 and continued without a stop till early on morning of June 10, when a very little rain fell which we hope will be followed with more.

William Cecil (better known as Bill) of Lebanon was calling on his old friend Peter Hunsicker at Cecil on Tuesday and talking old times when our town of Cecil was first named, etc. Bill informs us he was the third white child born in Umatilla county. Cecil was then in this county. After talking the topics of the day, Bill left to visit more friends in Pendleton.

Walter Pope and Frank Connor made a hasty leave from Cecil on Sunday but made a more hasty return from Eight Mile school vicinity, for when they got there "the beard was bare" and ticket tacked on the door. "Will" be found in Missouri.

W. G. Palmaster of Windybrook was in Cecil on Sunday hunting the starting point of the "never stop" sand blow which has almost taken the wind from Will, and his voice is now so thick with sand it sounds like a whisper a long way off.

Mr. and Mrs. Geo. Krebs and sons of The Last Camp, Master Marcellus Van Schuck of Arlington, and Miss A. C. Love of Cecil were calling on Mrs. Oral Henriksen at Ewing on Sunday.

L. S. Leach, state dairy and food inspector, accompanied by E. Duncan of Portland, visited Cecil store on Monday and posted his report good and in accordance with their orders.

Jackie Hynd, one of the Heppner Boy Scouts, has returned to Buttefly Flats after spending ten days camping at the Hamilton ranch with the Boy Scouts.

W. O. Hill and party of friends from Lexington were calling in Cecil the last of the week. W. O. reports crops looking very bad in his part of the county.

Mike McEntire arrived from Portland during the week and will visit his brother J. J. McEntire at Killarney before leaving for the mountains.

Krebs Bros. were lucky to finish buying on Wednesday, for all having has been stopped in this district on account of the high winds.

Mr. and Mrs. Chelcick and daughters of Portland spent the week-end at the home of Mr. and Mrs. Earl Crawford near Cecil.

Oral Henriksen of Ewing, T. H. Lowe of Cecil also Henry Krebs of The Last Camp, were business men in Heppner on Tuesday.

Archdeacon Goldie of Cove will Diving Made Easy



A. G. Johnson, of Chicago, liked to dive but disliked water in his eyes, ears and nose, so invented this cap, which has proved practical. Those who wear glasses can have special lenses fitted into the cap.

Their Crime Stirs Nation



Nathan Leopold, Jr., son of a Chicago millionaire, and Richard Loeb, son of the millionaire vice-president of Sears, Roebuck & Co., confessed to the kidnaping and murder of 13-year-old Robert Frank as an "experience." The Chicago police are now investigating to learn if the youths are responsible for other unsolved crimes during recent months. Both are 19 years old.

hold service in Cecil hall on Sunday evening, June 16th at 7:30. Everyone welcome.

Mr. and Mrs. Jim Hardesty and family of Morgan were visiting with Mr. and Mrs. H. J. Streeter during the week.

Miss Ester Logan of Ione is spending her vacation with her mother, Mrs. Hermann Haverkost near The Willows.

Mr. and Mrs. J. E. Crabtree and children of Cuchoo Flats spent Wednesday with Mrs. H. J. Streeter at Cecil.

Mr. and Mrs. W. W. Sabin of Portland made a short visit in Cecil on Friday before leaving for Hermiston.

Mr. and Mrs. Earl Morgan of Broadacres were calling in Cecil on Wednesday.

FARM POINTERS

Cultivation to Kill Weeds. The principal object in cultivating row crops like potatoes or corn is to kill weeds. Many persons think their cultivation is largely for the purpose of stirring up the ground, but really the cultivation is principally to prevent weed growth, since weeds are the worst wasters of moisture we have. Cultivation should be just deep enough to sufficiently stir the soil to kill the small weeds, the experiment station finds. Deep cultivation which digs up a lot of moist soil not only costs more but may do much harm by tearing off a great many roots. When a field of potatoes or corn is free from weeds and has a loose dry layer of soil on top there is nothing to cultivate for.

Late Forage Needed. With dry weather shortening the pasture and the hay crops, late planted forage may be quite worth while on some lands that were prepared fairly early but have not yet been planted. Corn planted moderately thickly even as late as the middle of June makes a great deal of excellent green feed, fair silage, and when cut and dried in September makes a very good kind of dry rough feed. With good summer rain turnips sown in late June or July often make a great deal of forage for fall and early winter, the Oregon station has found.

Because of the considerable shortage of forage in California and the exceedingly dry season so far, as well as market condition for Hungarian vetch seed, it is desirable that a large part of the Hungarian vetch be made into hay which will probably have a greater value per acre than the seed if much of the crop is cut for seed purposes, the experiment station suggests.

The car will be shipped to New York within a day or two and leaving there will be driven across the country to San Francisco. The Lincoln Highway has been selected as the official route of travel and stops will be made at most all the towns along the line. Frank Kalka, who years ago attained fame and broke many records as the pilot of Ford racing cars, will be at the wheel of the ten-millionth, during the transcontinental trip.

Model "T" Ford cars are today in use in every country on earth and the annual success which has attended the Ford Motor company dates principally from 1908, when the Model "T" was developed and first introduced on the market.

The company was among the first to adopt the unit power plant and the left hand drive control, and it was the originator of such fundamental principles as the removable cylinder head, three-point suspension and torque tube drive, all incorporated in the Model "T" and which have since been generally adopted in the automotive industry. The correctness of these basic features has been fully proven by the fact that in the entire ten-million production, while improvements have constantly been made, there never has been any deviation from the original principles of the Model "T."

Previous to the time that the Model "T" was introduced the company had built and sold approximately 20,000 Ford cars of other models. The first Model "T" was completed October 4, 1908, and it was seven years later, December 10, 1915, when Motor No. 1,000,000 was produced. Since then, under an ever increasing demand, production has steadily grown until a new output record was established in turning out the last million cars in 152 working days.

Jan. A. Fee, Jr., leading attorney of Pendleton, spent Monday and Tuesday in Heppner on legal business before the circuit court.

LOST—Automobile crank, below N. S. Whetstone place on Willow creek, May 31. Finder please leave at Lexington Filling Station and receive reward. Jn12-15.

FOR SALE—Seed corn; N. W. white dent. Acclimated to local conditions. Postpaid. One per bushel. ALVIN JONES, Box 231, Arlington, Oregon.



If we take the general average of the people as they come; they're valuable on some things, while on others they are dumb. . . . And, you're forced to this conclusion—if you'll only take the pains—that they're more inclined to money than an overplus of brains. . . . I wouldn't do injustice to the chick or child of man, who pins his faith to dollars and replevins all he can—but we can't dismiss the question from the feller that reflects, how brains compares with dollars in acquirin' men's respects!

Sometimes the man with millions creates an awful stir, while the baggy-kneed philosopher is one we're sorriest for. . . . The fat-head with the fortune that's been handed down to him, may write a fast-rate poem—but his chance is mighty slim!



I FEEL SORRY FOR THE BAGGY KNEED PHILOSOPHER!

Nominates Coolidge



M. L. Burton, President of Michigan University, delivered the address nominating President Coolidge at Cleveland. The choice of Burton to deliver the speech was a surprise, as he had never been active in politics.

GOITER TREATED AT HOME. Simple home treatment. Send for FREE booklet and information. WARNER'S RENOWNED REMEDIES CO., 725 Security Bldg., Minneapolis, Minn.

FOR SALE!

20 1/2 Acres in Hood River. Ideal Berry and Chicken Ranch. 4 acres under cultivation. All under irrigation. 1 mile from graded school. 2 1/4 miles from Ogdell. CASH PRICE, \$30.00 PER ACRE. L. G. DRAKE

PORT OF PORTLAND MAY EXPORTS LARGE

Portland, Or., June 11, 1924.—Lumber exports for May, 1924, amounted to 17,436,205 feet with a value of \$474,117. This is the first time this year that lumber exports have been less than for the same month in 1923. This, however, is accounted for by the small shipments of lumber, destined to Japan, which amounted to only 2,751,548 feet for May this year compared with 14,000,000 feet for the same month in 1923.

Shipments to Central and South American ports were heavy during this month with 3,889,000 feet delivered in Chile, 1,878,000 feet in Peru, 52,000 Salvador, 50,000 Brazil, 25,484 Uruguay, and 18,200 Argentine. China again assumed the position of our largest receiver of lumber taking 5,229,833 feet. China has been a very steady buyer during this year, taking between five and 15 million feet each month. This, also, is the smallest record for deliveries to this country so far this year.

"Battles Nature"



Helen Cole, society girl of California and New York, dressed in evening gown and silk slippers plunged into the wilds of New Jersey to prove that she could battle nature and subsist without provisions or equipment. Discussion started at a house party. She was followed by Chas. Carter, another guest.

EVERWEAR HOSIERY

We have just received an assortment of the latest new colors: Airdale, Jack Rabbit Gray, Tan Bark, Pearl, Banana. OUR PRICE RANGE FROM \$1.00 to \$3.00. Ladies' Silk Hosiery Only. E. N. Gonty Shoe Store. HOSIERY HEADQUARTERS.

Not In Style

The man in the barrel is not dressed according to the latest mode, and is not in position to make the best impression. This, however, is not the case with your printing if it is done by The Gazette-Times. We dress it in the latest fashion and it makes the right impression wherever it is seen.



The man in the barrel is not dressed according to the latest mode, and is not in position to make the best impression. This, however, is not the case with your printing if it is done by The Gazette-Times. We dress it in the latest fashion and it makes the right impression wherever it is seen.

Not In Style. The man in the barrel is not dressed according to the latest mode, and is not in position to make the best impression. This, however, is not the case with your printing if it is done by The Gazette-Times. We dress it in the latest fashion and it makes the right impression wherever it is seen.

Not In Style. The man in the barrel is not dressed according to the latest mode, and is not in position to make the best impression. This, however, is not the case with your printing if it is done by The Gazette-Times. We dress it in the latest fashion and it makes the right impression wherever it is seen.

Australia and New Zealand are taking more Northwest lumber, and during the month of May 2,089,914 feet of lumber valued at \$66,046 were shipped to these countries. To the Philippines were shipped 362,949 feet during this month. Shipments to the United Kingdom were heavier than usual with 1,364,168 feet valued at \$71,873. Other shipments to Europe include 50,000 feet to Holland.

Domestic shipments of lumber for the month of May, 1924, amount to 20,214,788 feet, of which 9,222,940 feet are to be delivered in New York City. Intercoastal shipments of lumber have been very heavy this year and the record for the five months surpasses that of the entire year in 1923. Shipments to New York have been particularly heavy, but smaller shipments have been made to most of the Eastern and Gulf ports. During the month of May this year shipments outside of those to New York were made to Baltimore, Boston, Philadelphia, Norfolk, New Orleans, Mobile, Houston and Galveston. This lumber was carried by 12 vessels, with 15 vessels carrying cargoes to California ports.

According to the reports issued by the Deputy Collector of Customs at Astoria, the total shipments from the Columbia river in May amount to a little more than 62,000,000 feet. During this month 72 vessels cleared from the river with lumber for foreign and domestic ports. Of this 62,000,000 feet 16,000,000 were destined foreign ports, 31,000,000 feet to California, and 15,000,000 to Atlantic coast ports. These figures consider vessels which cleared from Portland on the last day of May. This accounts for the difference in figures on the two reports.

LOST—One 3-yr-old steer, branded BIP on left hip; lower 1/2 crop, or under slope in left ear; one 2-yr-old steer, same brand and ear mark, high arched horns. Reasonable settlement to finder. B. H. PECK, Heppner.

FOR SALE—3000 first class posts, nearly all tamarack, 6c on ground. Dry, ready for use. Southeast Parker's Mill mile and a half. SILAS A. HARRIS. jn14-2mp.

Remember we are selling hardwood at 10c a board foot. PEOPLES HARDWARE COMPANY.

Ground cherry plants for sale. See F. R. Brown.

Hotel Heppner

First Class Dining Room. Merchants' Lunch. 12 to 2 50c 12 to 2. W. E. BELL, Proprietor.

Judge's Joke

WOULDN'T IT BE A GREAT O' WORLD IF THE FELLOWS WHO THINK THEY KNOW IT ALL COULD ONLY PROVE IT? For sale at a bargain—7-room residence with full basement; on corner next to power house. Would consider land or light auto truck in trade. W. H. CLARK, Box 24, Heppner, Oregon.

FOR SALE—3000 first class posts, nearly all tamarack, 6c on ground. Dry, ready for use. Southeast Parker's Mill mile and a half. SILAS A. HARRIS. jn14-2mp.

Remember we are selling hardwood at 10c a board foot. PEOPLES HARDWARE COMPANY.

Ground cherry plants for sale. See F. R. Brown.

We have just received a shipment of Spokane Draper Company's barvesting machinery drapers. The best draper made. Come in and see them. PEOPLES HARDWARE COMPANY.

Remember we are selling hardwood at 10c a board foot. PEOPLES HARDWARE COMPANY.

Ground cherry plants for sale. See F. R. Brown.

We have just received a shipment of Spokane Draper Company's barvesting machinery drapers. The best draper made. Come in and see them. PEOPLES HARDWARE COMPANY.

Remember we are selling hardwood at 10c a board foot. PEOPLES HARDWARE COMPANY.

Ground cherry plants for sale. See F. R. Brown.

We have just received a shipment of Spokane Draper Company's barvesting machinery drapers. The best draper made. Come in and see them. PEOPLES HARDWARE COMPANY.

Remember we are selling hardwood at 10c a board foot. PEOPLES HARDWARE COMPANY.

Ground cherry plants for sale. See F. R. Brown.

We have just received a shipment of Spokane Draper Company's barvesting machinery drapers. The best draper made. Come in and see them. PEOPLES HARDWARE COMPANY.

Remember we are selling hardwood at 10c a board foot. PEOPLES HARDWARE COMPANY.

Ground cherry plants for sale. See F. R. Brown.

We have just received a shipment of Spokane Draper Company's barvesting machinery drapers. The best draper made. Come in and see them. PEOPLES HARDWARE COMPANY.

Remember we are selling hardwood at 10c a board foot. PEOPLES HARDWARE COMPANY.

Ground cherry plants for sale. See F. R. Brown.

We have just received a shipment of Spokane Draper Company's barvesting machinery drapers. The best draper made. Come in and see them. PEOPLES HARDWARE COMPANY.

Remember we are selling hardwood at 10c a board foot. PEOPLES HARDWARE COMPANY.

Ground cherry plants for sale. See F. R. Brown.

We have just received a shipment of Spokane Draper Company's barvesting machinery drapers. The best draper made. Come in and see them. PEOPLES HARDWARE COMPANY.

Remember we are selling hardwood at 10c a board foot. PEOPLES HARDWARE COMPANY.

Ground cherry plants for sale. See F. R. Brown.

We have just received a shipment of Spokane Draper Company's barvesting machinery drapers. The best draper made. Come in and see them. PEOPLES HARDWARE COMPANY.

Remember we are selling hardwood at 10c a board foot. PEOPLES HARDWARE COMPANY.

Ground cherry plants for sale. See F. R. Brown.

We have just received a shipment of Spokane Draper Company's barvesting machinery drapers. The best draper made. Come in and see them. PEOPLES HARDWARE COMPANY.

Remember we are selling hardwood at 10c a board foot. PEOPLES HARDWARE COMPANY.

Ground cherry plants for sale. See F. R. Brown.

We have just received a shipment of Spokane Draper Company's barvesting machinery drapers. The best draper made. Come in and see them. PEOPLES HARDWARE COMPANY.

Remember we are selling hardwood at 10c a board foot. PEOPLES HARDWARE COMPANY.

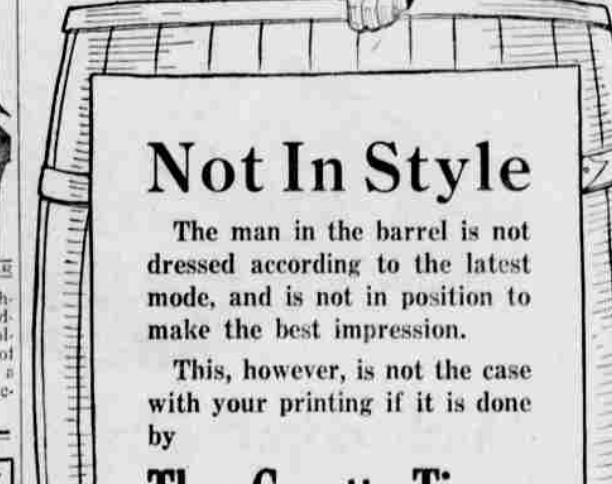
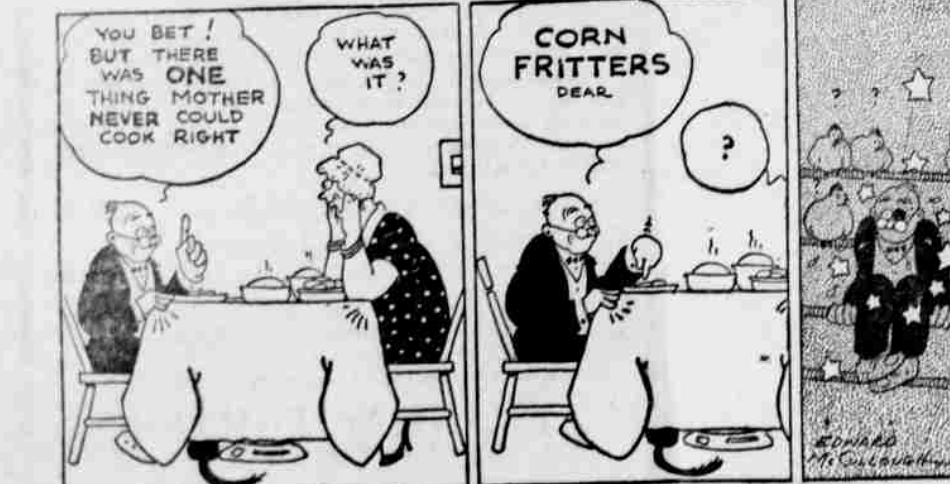
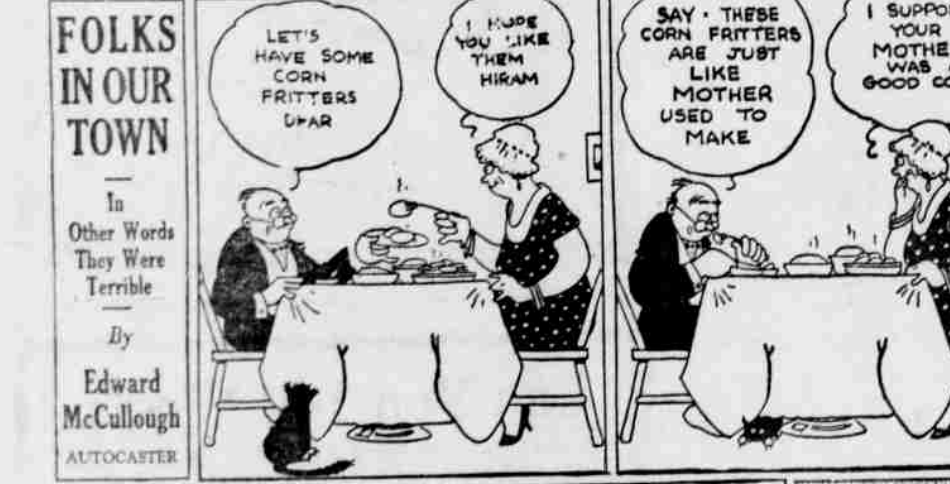
Ground cherry plants for sale. See F. R. Brown.

We have just received a shipment of Spokane Draper Company's barvesting machinery drapers. The best draper made. Come in and see them. PEOPLES HARDWARE COMPANY.

Remember we are selling hardwood at 10c a board foot. PEOPLES HARDWARE COMPANY.

Ground cherry plants for sale. See F. R. Brown.

We have just received a shipment of Spokane Draper Company's barvesting machinery drapers. The best draper made. Come in and see them. PEOPLES HARDWARE COMPANY.



STANDARD OF QUALITY. STANDARD OIL COMPANY (California).