

L. MONTERESTELLI

Marble and Granite Works

PENDLETON, OREGON

Fine Monument and Cemetery Work

All parties interested in getting work in my line should get my prices and estimates before placing their orders

All Work Guaranteed

A. M. EDWARDS

WELL DRILLER, Box 14, Lexington, Ore.

Up-to-date traction drilling outfit, equipped for all sizes of hole and depths. Write for contract and terms. Can furnish you

CHALLENGE SELF-OILING WINDMILL

all steel. Light Running. Simple, Strong, Durable.

Pioneer Employment Co.

With Two Big Offices

PENDLETON AND PORTLAND

Is prepared to handle the business of Eastern Oregon better than ever before

Our Specialties

Farms, Mills, Camps, Hotels, Garages, Etc.

WIRE RUSH ORDERS AT OUR EXPENSE

Portland Office

Pendleton Office

Only Employment Office in Eastern Oregon with Connections in Portland

The Byers Chop Mill

(Formerly SCHEMPP'S MILL)

STEAM ROLLED BARLEY AND WHEAT

We handle Gasoline, Coal Oil and Lubricating Oil

You Find Prompt and Satisfactory Service Here

LOOKING AHEAD

NATION'S industrial situation shows itself, as a rule, in the statements issued by the banks of the country.

Thus, periods of prosperity are marked by increases in commercial as well as savings deposits. Periods of readjustment, with their accompanying problems of unemployment, show themselves in a decline of commercial deposits and a slight change of savings deposits. And as times become better and the future looms big with possibilities, bank deposits grow again and business comes to life.

As we look ahead the best advice that this bank can give is: "GET YOUR FINANCES WELL IN HAND. BUILD UP YOUR CHECKING ACCOUNT. PREPARE YOURSELF TO MEET OPPORTUNITY WITH A CASH RESERVE AND CREDIT POSIBILITIES."

FARMERS & STOCKGROWERS NATIONAL BANK

Heppner Oregon

To Tell Europe When and How Much to Pay Us



This is the House Committee just after leaving the White House where President Harding outlined the policy for the European debt settlement. They are, left to right: Burton, Ohio; Mondell, Wyo.; Sanford and Langworth, Ohio; Campbell, Kas.; Towser, Iowa; Madden, Ill.; Green, Vermont; Green, Iowa.

BRADFUTE SAYS EFFORTS OF FARM BUREAU WILL BE CENTERED ON CO-OPERATIVE MARKETING IN 1923

Walter Petzet of Texas Heads New Department Which Will Sell Direct Every Type of Farm Production.—Appeals to Members for Individual Aid.

By O. E. BRADFUTE,

President American Farm Bureau Federation.

CHICAGO, JANUARY 29.—While some of the shadows of the clouds of 1922 have passed away and agriculture is in some respects in better shape than for the past two years, there yet remains much to be done before we reach a proper level as compared with other industries and commodities.

I am convinced that our greatest aid the past year came from within our own ranks, and that in the future we shall find self-help our greatest reliance.

Agriculture will not and cannot succeed except through organization and co-operation.

Agriculture must be put on its feet again and the business made so attractive that our young men will remain on the farms. That problem is one for the American Farm Bureau Federation to help solve for the American farmer.

No one who attended the last annual meeting could help but realize that the American Farm Bureau Federation was there setting up some stakes to mark out a straight furrow for the accomplishment of a few very definite purposes during the coming year.

The Farm Bureau poses as a service organization. Without doubt the greatest and most immediate service which can be rendered is help in more successful and profitably marketing farm products. This undoubtedly means co-operative marketing and may be applied to every type of farm production and thus render a real service to each and every farmer in America. There is, therefore, being organized a special department of marketing in our office here to be headed by Walter Petzet, of Dallas, Tex., one of the strongest men of the country available for that work. He will be ably supported by such assistants as he may need.

Successful co-operative marketing means bringing into play all the other departments of the American Farm Bureau Federation. The departments of organization, information, research, transportation and legislation will be called on and used to assist in this great work. Each can render efficient help.

This work can only succeed with the aid of each and every one of our members. Let each one make good use of the facilities being set up for your use and stand by it. Let the slogan for the year be:

"Service! The opportunity, Co-operative Marketing!"

"So, forward, Farm Bureau!" I am counting on every member to do his share.

HOMIE PHILOSOPHY for 1923

GREAT men use arithmetic to reason. Small fry use it to figure percentages. The big fellows live during and after life. The other gang never lives at all. They just come out. Think it over. Simple sum in addition. God is Love. That's a number—One. You are made in God's image. That's another number—One. Very well then, add 'em up. The more you express Love in your daily life, the more you resemble God. Get it? One and one are two. Now then: God is good, and God is Everwhere.

They Grow 'em Big In North Dakota



John Assen, 24 years old, of Minot, N. D., didn't know what to do with his feet 9 inches and 450 pounds until the screen star, Harold Lloyd, sent out a distress call for a giant to help him in the movies—and he has made good.

STAFFORD PROCESS USED BY EASTMAN

University of Oregon, Eugene, Jan. 29.—So successful has been the process discovered and perfected by Prof. O. F. Stafford, head of the University of Oregon chemistry department, for the utilization of waste wood in the production of charcoal and wood distillation products, that one of the two big corporations utilizing this method on a commercial scale will soon increase the capacity of its plant.

This company is the Tennessee Eastman Corporation, a subsidiary of the Eastman Kodak Company. The plant, located at Kingsport, Tenn., has a capacity at present of 200 cords daily. This will be increased with the installation of new equipment, according to word that reached the campus this week.

Since Prof. Stafford and the firm of Boston engineers behind him demonstrated that his process was practically commercially, leading the Eastman corporation to establish an industrial center at Kingsport, there has been a marked development at the Tennessee city. A village, consisting of thirty-one modern houses, was constructed for employees of the plant. The village will house 155 persons. Besides the construction of the village, a great deal of construction work has been undertaken in the Kingsport during the entire period of the installation of the retorts and other equipment, and this work was undertaken under his direction and the tests were made under his supervision.

Leads French Army In Germany



Gen. Decontie is in immediate command of the French troops now in control of the Ruhr district of Germany. At certain points he has thrown his troops beyond the basin boundaries and invaded neutral territory.

Poem by Uncle John



WAVES.

WE LOVE the briny ocean wave that tops the mighty main; and even on the reindeer-naïve, the waves are safe and sane. . . . We brag on waves in Auburn hair, an' dote on mightily, when the cold wave hits waves of brown, but nature changes town. . . .

The rippling wave of meritism is mighty hard to beat, that underscores a Marvel wave which waltzes down the street. . . . I quaff the waves of harmony in Mary Liza's song, but a fellow has to hunt his hole, when the cold wave comes along. . . .

The weather during the next two weeks will be exactly like some subscriptions to this newspaper—"Unsettled."

For Sale—Small house, See Mrs. M. L. Oney, Heppner.

Basic Business Facts of Agriculture Being Supplied to Farmers

Department of Agriculture Emphasizing Economic Phase of Farming and Kindred Activities.

Washington, Jan. 30.—Establishment of shipping-point inspection in several leading agricultural states, together with nation-wide expansion of its market news-reporting service, have brought the United States Department of Agriculture closer to farmers during the past year.

The result has been made possible through the coordination of economic studies in the department covering each phase of the processes of production, marketing, and distribution of farm products. During the year, the Bureau of Markets and the Bureau of Crop Estimates were consolidated into the Bureau of Markets and Crop Estimates. The Office of Farm Economics and Farm Management was later brought into the group forming what is now the Bureau of

Punchettes



THE FEATURELESS FLAPPER.

THE flapper is not to be condemned for so because she is a dapper. But she is to be criticized because of the methods she uses to become a flapper. If you mean by flapper an unsophisticated, innocent childlike young girl, with the legitimate child short, curly hair, red cheeks, bounding spirit, then let nature make the flapper. The artificial flapper of today is disgusting, and to an honest, serious man she is an object of pity. She is using artificial means. She is using the cosmetics that destroy her skin, rob her of the distinctive features that belong to the sweet girl. She is a featureless creature. She is an unattractive person. She is an object of pity. She is a female despoiling the protection and prayers of honest people.

The drug store cannot produce nature's rose and hang it on the cheek of a girl. No artificial power has ever been able to put the flush in the human eye, or the sweetness in the human soul, or the magnetism in the human heart. The moving dummies, the drug store flappers, the cosmetic females are hideous, pitiable, and featureless.

The mothers of the country are responsible for the featureless girl and for the destruction of female beauty. God have mercy on the country when the featureless flapper becomes the social queen.

Organizes Women of "Invisible Empire"



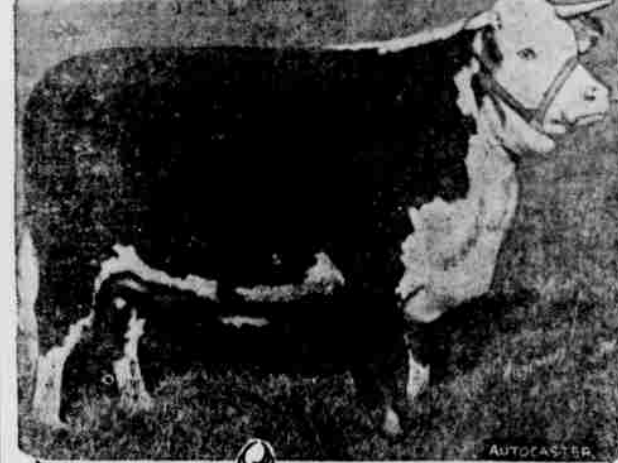
Mrs. R. H. Davis, of Portland, Ore., is now in Louisiana where a class of 1000 women are to be initiated into the Klux Klan Auxiliary. The women claim to have branches in 33 states.



Oscar Suffers From Poor Telephone Service
Terry Gilkison



A Grand Champion Cow from Kentucky



"Lady Woodford" won her honors at the American Royal Livestock Show in Kansas City recently. Breadth, front, thick and even flesh marked her for distinction as the ideal type for beef cattle. She is owned by Sen. J. N. Camden, of Versailles, Ky.

California



WHERE the sun shines most of the time. Out-of-door life all the time. Thousands of miles of paved highways through picturesque semi-tropic settings make motoring wonderfully exhilarating. Most attractive ocean beaches on the Pacific Coast. Most complete system of hotels, apartment houses, cottages, bungalows and small suites for tourists of any country in the world, and all costs reasonable. Room for everybody.

Representatives of the UNION PACIFIC SYSTEM will gladly furnish instructive and beautifully illustrated booklets giving complete information about the glorious playground of the West. Let them tell all about hotel rates, railroad fares, through car service, the famous Circle Tour through San Francisco and Salt Lake City, or a part of the way by ocean trip. No journey of equal interest in America. C. DARBEE, Agent, Heppner, Ore. WM. McMURRAY, General Passenger Agent, Portland, Oregon.