

LIVE CECIL NEWS ITEMS LOCAL NEWS OF THE WEEK

Ed Melton of "The Lookout" was a business man in Ione on Saturday.

Miles Shurtz of Arlington was a busy man among his Cecil friends on Friday.

J. H. Franklin of Rhea called on the "mayor" at "Butterby Flats" on Friday.

Misses Gertrude and Hazel Pettyjohn were in from their Morgan ranch on Monday.

W. H. Cronk of Heppner was looking up his friends on Willow creek on Saturday.

Miss Winters and niece Miss Hazel Winters of "Shady Dell" spent Saturday in Ione.

Misses Mildred Henriksen and Bernice Beeson of Rhea were callers on Cecil on Saturday.

Roy Stender and Miss Juanita Crabtree of "Dohbeys Hill" were in Cecil on Sunday.

Leon Logan and family of Four Mile were calling on their friends around Cecil Friday.

J. M. Melton of "The Lookout" spent Thursday with his old friend J. W. Osborn at Cecil.

Miss Georgia Summers of "The Last Camp" spent Saturday with Miss Ester Logan at Four Mile.

Ione was honored during the week by a visit from the "mayor" and "postmaster" and "marshal" of Cecil.

Clifford Winters and sister Miss Hazel of "Shady Dell" were callers at "Willow Creek" ranch on Monday.

Misses Annie and Violet Hynd of "Butterby Flats" were the guests of Miss Bernice Franklin at Ewing on Monday.

W. H. Barnes of Mountain Grove, Missouri, arrived in Cecil on Saturday where he will visit friends for some time.

A fine band of sheep belonging to Mrs. Pat Farley of the Willows passed through Cecil on their way to their summer range.

Jack Hynd and daughter, Miss Annie and Miss Violet and A. Henriksen and Henry Krebs autoed to Heppner on Saturday.

Mr. and Mrs. Phil Brady arrived in Cecil from Portland on Thursday where they had been attending the Shriners' festivities.

Jack Fenwick, the prominent painter of Ione has been busy during the week painting the "Highway House" for Postmaster Lowe.

C. A. Minor and sister Mrs. Wells of Heppner spent Friday at "The Last Camp" leaving early on Saturday morning for Portland.

Cecil Ahalt, who has been spending several weeks at Ritter Springs, arrived in Cecil on Saturday and is now busy making hay for Krebs Bros. at the "Last Camp."

Mrs. Geo. Krebs of "The Last Camp" spent Monday at The Dalles visiting her sister, Mrs. Wallace, who has recently gone through an operation at The Dalles hospital.

A school meeting was held at Cecil for School District No. 8, on Monday, when the following were elected members of the board: Henry Krebs, chairman; A. Henriksen and Geo. Krebs, directors and Oral Henriksen, clerk.

Eddie Reitmunn of Ione was a Saturday caller in Heppner.

Harry Rood returned Sunday from a visit of a week in Portland.

Dr. A. D. McMurdo was called to Butter creek on professional business on Saturday.

Burton H. Peck of Sagenhurst farm was an interested spectator this week at the grain grading school.

R. W. Turner and son J. O. Turner, attended the grain grading school in this city the first of the week.

John A. Adams, well known farmer of the Hardman country, was a Friday business visitor in Heppner.

Frank Akers, who farms one of the best ranches in the Eight Mile country, was shopping in Heppner on Saturday.

Miss Gladys Bozlee of Portland is a guest this week at the homes of Myron Carver and Miss Gwendolyn Darboe.

BORN—In this city on Sunday, June 26, to Mr. and Mrs. Earle E. Gilliam, a son. Both mother and son are doing nicely.

Miss Gladys Bozlee of Portland is a guest this week at the homes of Myron Carver and Miss Gwendolyn Darboe.

I. C. Bennett has gone to Dent, Idaho, where he will spend the summer looking after Morrow county sheep on summer range near there.

Miss Sadie Huddleston returned to her home near Lone Rock last Saturday evening after spending several days visiting with Heppner friends.

Mrs. Ella B. Fell received serious injuries when she fell at her home last Saturday evening. Two ribs were broken. Her condition is improving.

Mr. and Mrs. Mal Church and son Charles left on Sunday for their new home at Dee, Oer. They made a shipment of household goods and farm equipment to their new location.

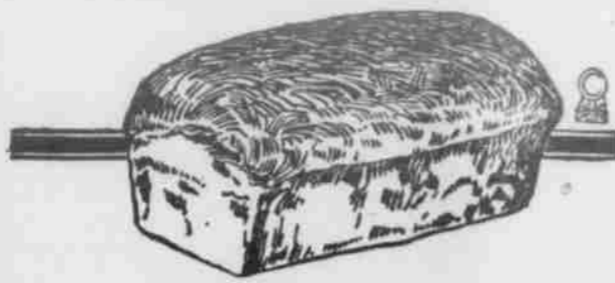
Dwight Misner, one wheat farmer, came up from the Egg City Tuesday evening and left on Wednesday with a number of other farmers on a tour of inspection of the wheat fields of Morrow, Gilliam and Sherman counties.

Dud Flynn, prominent Grant county stockman, brought a load of wool over from the Ritter section the last of the week. There will be more travel this way upon the completion of the Heppner-Ritter, road says Mr. Flynn.

Miss Vera Mahoney, daughter of Mr. and Mrs. W. P. Mahoney, returned Sunday from Seattle, where she completed her third year at the University of Washington. She was accompanied home by her sister, Miss Doris, who had been visiting in Seattle for several weeks.

M. D. Clark says the most wonderful feature of the Shriners Convention in Portland last week was the ensemble work of 64 bands on Multnomah field. When Clark says one was fairly raised off his feet by the tremendous volume of the music.

Ray White was up from Lexington Wednesday and announced that barley harvest on the White ranch would commence immediately after the fourth of July. While Mr. White would not venture an estimate on wheat production, he is of the opinion that there will be some crop to harvest out his way.



Far Better Bread!

THE KIND YOU'VE BEEN HANKERING FOR!

Here It Is!

Heppner bread is a FULL, PLUMP loaf, with the same BODY to it that MOTHER used to make!

Does it go down EASY?

Better BELIEVE it does! Greatest domestic bread in the world!

22c the large size; 11c the small

SEND FOR SOME TODAY

Heppner Bakery

**Wheat \$3 Per Bushel
Alfalfa Hay \$25 Per Ton**

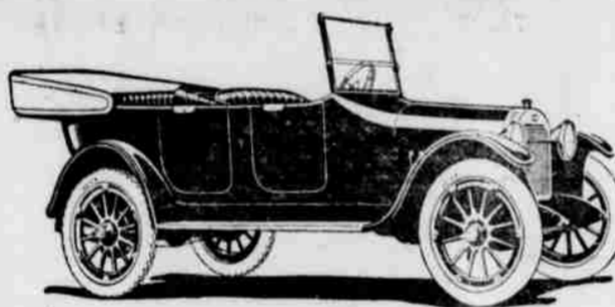
These are about the figures for wheat and hay the coming fall. Think also of the prices paid for cattle, sheep, hogs, dairy products, etc. When you acquire a rich piece of Mother Earth you immediately become a producer instead of a consumer. Your garden, fruit, meat, eggs you raise yourself, thus side-tracking the H. C. L. to a great extent.

GET THAT RANCH NOW

I am here for the purpose of helping you acquire anything in the shape of land from a town lot to a 7,000-acre wheat ranch or stock ranch, on easy terms. You will never get this land any cheaper and right now for the next five years is the time to make money. Come in and look over my list.

E. M. SHUTT

The Real Estate Man Upstairs in Court House



When in THE DALLES Stop At the
Motor Service Company Garage
OPEN ALL NIGHT

Vulcanizing, Auto Supplies. WE WILL TREAT YOU RIGHT.
Elgin—King Eight—Oldsmobile—Oakland

**Special
SOAP SALE**

Finding ourselves carrying too many varieties of Soap, we want to reduce stock.

- Peets A. B. Naptha.....Regular 10c, now 8 1-3c
- Peets Cascade (White)....Regular 10c, now 8 1-3c
- Easy Dry Naphtholin....Regular 8 1-3c, now 7 1-4c
- White Wonder (White)....Regular 8 1-3c, now 7c
- Lenox (Yellow).....Regular 6 1-4c, now 5c

A good time to buy your supply of soap.

**Phelps Grocery
Company**

Another Royal Suggestion
BISCUITS, BUNS and ROLLS
From the NEW ROYAL COOK BOOK

BISCUIT! What delicate light this word suggests. So tender they fairly melt in the mouth, and of such glorious flavor that the appetite is never satisfied. These are the kind of biscuits anyone can make with Royal Baking Powder and these unusual recipes.

Biscuits

- 2 cups flour
- 4 teaspoons Royal Baking Powder
- 1/2 teaspoon salt
- 2 tablespoons shortening
- 1/2 cup milk or half milk and half water

Sift together flour, baking powder and salt, add shortening and rub in very lightly; add liquid slowly; roll or pat on floured board to about one inch in thickness (handle as little as possible); cut with biscuit cutter. Bake in hot oven 15 to 20 minutes.

Royal Cinnamon Buns

- 2 1/2 cups flour
- 1 teaspoon salt
- 4 teaspoons Royal Baking Powder
- 2 tablespoons shortening
- 1 egg
- 1/2 cup water
- 1/2 cup sugar
- 2 teaspoons cinnamon
- 4 tablespoons raisins

Sift 2 tablespoons of measured sugar with flour, salt and baking powder; rub shortening in lightly; add beaten egg to water and add slowly. Roll out 1/4 inch

thick on floured board; brush with melted butter, sprinkle with sugar, cinnamon and raisins. Roll as for jelly roll; cut into 1 1/2 inch pieces; place with cut edges up on well-greased pan; sprinkle with a little sugar and cinnamon. Bake in moderate oven 20 to 25 minutes; remove from pan at once.

Parker House Rolls

- 4 cups flour
- 1 teaspoon salt
- 8 teaspoons Royal Baking Powder
- 2 tablespoons shortening
- 1 1/2 cups milk

Sift flour, salt and baking powder together. Add melted shortening to milk and add slowly to dry ingredients stirring until smooth. Knead lightly on floured board and roll out 1/4 inch thick. Cut with biscuit cutter. Crease each circle with back of knife on side of center. Butter the small section and fold larger part well over the small. Place one inch apart in greased pan. Allow to stand 15 minutes in warm place. Brush each with melted butter and bake in moderate oven 15 to 20 minutes.

**ROYAL
BAKING
POWDER**
Absolutely Pure

FREE
Write TODAY for the New Royal Cook Book. Contains 400 other recipes just as delightful as these. Will show you how to add interest and variety to your meals. Address:
ROYAL BAKING POWDER CO.
115 Fulton Street
New York City

"Bake with Royal and be Sure"

Unusual Tires

TIRES that are different in their distinctive good looks and in their construction. An extra ply of fabric, an extra heavy tread and generous oversize make a tire of remarkable endurance.

Next Time—BUY FISK

Chas. H. Latourell

**FISK RED-TOP
TIRES**



A Real Snap

Land at Twenty-Five Dollars Per Acre
480 Acres in Gooseberry

12 miles to market, one mile to school. Good buildings and improvements.

\$12,000.00 Takes It

One of the best wheat ranches in the north Ione section for sale at \$35.00 per acre. Nearly 1000 acres in this ranch. Price includes this year's crop.

**Low Prices for High Grade Land
Arthur R. Crawford**

**Greatest Bargain
of the Season
800-ACRE WHEAT RANCH**

- 700 Acres Tillable
- 500 Acres in Wheat
- 80 Acres in Rye

ONE THIRD OF CROP GOES WITH THE RANCH

\$35.00 Per Acre

This ranch is five miles from town and only three quarters of a mile from school. Six-room house, good barn, good well water, fair fences.

160 ACRES IN SUMMERFALLOW

**\$35.00 Per Acre If Taken
Within Next Two Weeks**

GRAIN INSURANCE

I would remind my old customers that the time is at hand when your growing crops should be insured against loss by fire or hail. Hold your business for me and I assure you I will appreciate it.

COME IN OR CALL

Roy V. Whiteis
Real Estate and Insurance

Heppner Oregon