

LIVE CECIL NEWS ITEMS

Pat McEntire of "Killarney" was a business man in Cecil on Saturday.

Henry Springer of "The Bungalow" made a trip to Heppner for the week end.

Charlie Sperry and son of Ione were doing business around Cecil on Wednesday.

Mr. and Mrs. Dwight Misner were callers at Cecil on their way to Arlington on Monday.

J. H. Franklin of Ewing, who has been visiting in Eugene for some time returned home Friday.

Mr. and Mrs. Jack Hynd of "Butterby Flats" spent Thursday amongst their Arlington friends.

Mr. and Mrs. Everett Logan of "Fairview" were doing business in Arlington on Tuesday.

J. H. Streeter of Four Mile and Bert Palmateer of Morgan were callers in Cecil on Tuesday.

Mr. and Mrs. A. E. Ross and family of the "Lookout" left on the local for Heppner on Wednesday.

The "mayor" and T. H. Lowe of Cecil autoed to Heppner on Tuesday returning home Wednesday.

Hay making is in full swing on Willow creek and alfalfa is cutting off good, as far as we can hear.

Mr. and Mrs. Geo. Krebs of "The Last Camp" spent Saturday and Sunday visiting friends in Heppner.

A. Henriksen and son Clifford of "Willow Creek" ranch left for their Hamilton ranch on Saturday morning.

Miss Malinda May of "The Lone Star" ranch visited with Mrs. Geo. Krebs of "The Last Camp" on Wednesday.

Miss Winters and niece, Miss Hazel Winters of "Steady Dell" spent Thursday afternoon at "The Last Camp."

Mrs. Frona Blahm who has been spending her vacation in Heppner returned to her duties at "Butterby Flats" on Friday.

Miss Georgia Summers of "The Last Camp" and cousin Marcelus Van Scholack left on the local for Arlington on Saturday.

Galen Falkner returned to Cecil on Saturday and left on Sunday for the Lundell ranch at Rhea where he intends to work in the hay harvest.

Roy Scott, camp tender for one of the bands of sheep from "Butterby Flats," left on Saturday with his pack for the Hynd Bros. ranch in Freezer-out.

Mr. and Mrs. A. E. Nash and daughter, accompanied by Mr. and Mrs. Elma Willant and son left on Monday morning for a trip through Washington.

Peter Bauernfeld left on Thursday for his annual vacation which he will spend at Ritter Springs. Pete declares there is no place to equal the Ritter Springs.

Miss Sara A. May arrived in Cecil on Sunday from Warmie where she has been teaching school and will spend her vacation with her parents at the "Lone Star" ranch.

A large bouquet of beautiful roses eight varieties of different colors are to be seen in Cecil store. These roses have been grown by Mrs. W. G. Palmateer of "Windy Nook" ranch near Cecil.

Ben Barnes of "Poplar Grove" was in Ione on Saturday consulting Dr. Walker about some trouble on his face. We are glad to learn Mr. Barnes is feeling much better since his face was lanced.

Mr. and Mrs. A. Henriksen of "Willow creek" ranch who have been in Portland for a few days returned home on Monday, driving a new Jordan car which they had purchased while in the city.

Mr. and Mrs. Geo. Henriksen returned home on Monday from Canby, Oregon, where they have been visiting for a few days. They were accompanied by their daughter, Miss Mildred and niece, Miss Bernice Boeson, of Canby.

LOST—Eastern Star pin. Finder please notify or return to Dr. H. T. Allison. 1p.

FOR SALE—Complete steam threshing outfit—Pride of Washington separator, 32-56, Advance engine, in good condition. Call or write Carlson Bros., Ione, Oregon. 6tp.

WANTED—Position on a ranch by man and wife. Phone Main 564. 2tp.

LOST—Bay mare, 8 years old, weight about 1500, branded JM connected on left stifle. Reward for information leading to recovery will be paid by E. P. Berry, Heppner, Ore. 2tp.

STANDARD AUTO PAINTING CO., East Third and Madison streets, Portland. Paint anything from bugs to limousines. Satisfaction guaranteed. Leave car with us when in Portland. Phone E 744.

ROUND UP at Lena next Sunday, June 20. The Lena Round Up is a local institution where there are no trained bronchos and the boys ride 'em straight up too. Head for Lena Sunday, June 20.—(Adv.)

Prof. James Austin, leader of the Heppner Band, left on Wednesday for Portland to spend a vacation of several days in the metropolis.

Nels H. Justus, Ralph I. Thompson and Roy V. Whites returned the last of the week from Portland, where they took work in the Shrine. Other Heppner men who were members of the class were D. M. Ward, W. E. Prun and H. C. Githens.

The DAIRY



INCREASE OF DAIRY EXPORTS

Figures Are of Particular Importance as They Show Trend of Trade Following War.

(Prepared by the United States Department of Agriculture.)

Dairy products amounting to the equivalent of 100 pounds of milk from every dairy cow in the United States were exported during the year ending June 30, 1919, according to figures just compiled by the United States department of agriculture. The exports include butter, cheese, and condensed milk, but the net exports of those products in terms of whole milk amounted to 2,556,695,746 pounds, or approximately 3 per cent of all the milk produced in the United States.

These figures indicate the possibilities of developing foreign markets for American dairy products. They are of particular importance, as they show the trend of trade immediately following the war. Probably the greatest interest in an industry is that displayed during the time between actual war and actual peace, the specialists say, when businesses are trying to regain normal trade or acquire an advantage in their special lines. During the fiscal year 1919 the armistice was in operation the greater part of the time, only the first four months—July to November—being in the actual war period.

During the year the exports of butter and condensed milk were increased, and the exports of cheese were decreased when compared with 1918. The total butter exports amounted to 33,739,000 pounds for the year. This is the largest amount of butter exported from the United States in recent years and has been exceeded but three times since 1850. The largest amount on record was for the year 1880, when 39,000,000 pounds were exported. The cheese exports for 1919 were only 18,794,853 pounds, which is a decrease of more than 50 per cent when compared with any year from 1915 to 1918, inclusive. The condensed milk exports for 1919 were 728,740,569 pounds. This is an increase over 1918 of 198,900,477 pounds.

The net exports of these dairy products were:

	Pounds	Eq'nt in whole milk (pounds)
Butter	33,739,000	67,478,000
Cheese	18,794,853	37,589,706
Condensed milk	728,740,569	1,457,481,138
1919, net exports in terms of whole milk		2,556,695,746
1918, net exports in terms of whole milk		1,928,000,000

It is noticeable that the butter exports fell off in May and June each year, as the butter made during those months is used largely for storage.

Improvement of the herd comes through the sire. Therefore, make sure you get a right good one.

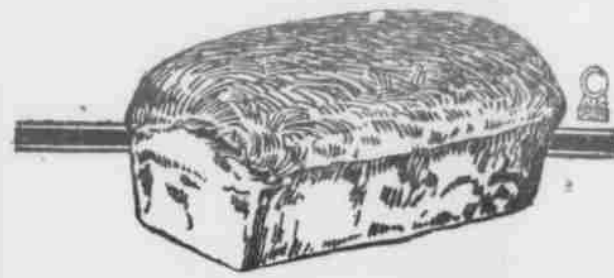
Grass, hay, corn fodder and other roughage which may not have a ready sale are economically utilized by the dairy cow.

In order to make the dairy herd return a profit in this time of high-priced feeds, we must feed the cows intelligently.

For the same reason that it pays to groom horses, it also is invaluable to apply the brush and curry comb vigorously to the cow daily.

Mrs. Chester Darbee and daughter Miss Gwendolyn returned on Tuesday from Portland, where Miss Gwendolyn has been attending high school.

Leo Grant, a number of years ago physical instructor for the Heppner Commercial Club and a wrestler of note, is spending a few days in Heppner this week visiting with old friends. Mr. Grant is now in the fur business in Seattle.



Far Better Bread!

THE KIND YOU'VE BEEN HANKERING FOR!

Here It Is!

Heppner bread is a FULL, PLUMP loaf, with the same BODY to it that MOTHER used to make!

Does it go down EASY?

Better BELIEVE it does! Greatest domestic bread in the world!

22c the large size; 11c the small

SEND FOR SOME TODAY

Heppner Bakery

**Wheat \$3 Per Bushel
Alfalfa Hay \$25 Per Ton**

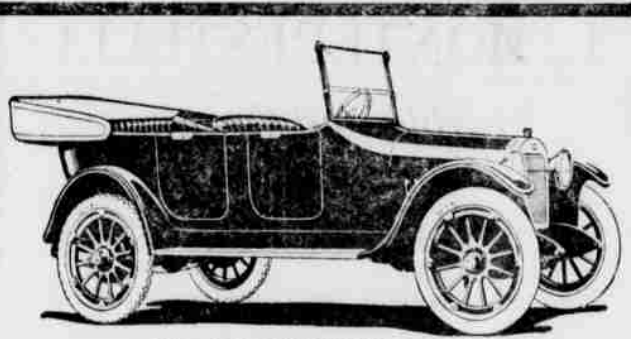
These are about the figures for wheat and hay the coming fall. Think also of the prices paid for cattle, sheep, hogs, dairy products, etc. When you acquire a rich piece of Mother Earth you immediately become a producer instead of a consumer. Your garden, fruit, meat, eggs you raise yourself, thus side-tracking the H. C. I. to a great extent.

GET THAT RANCH NOW

I am here for the purpose of helping you acquire anything in the shape of land from a town lot to a 7,000-acre wheat ranch or stock ranch, on easy terms. You will never get this land any cheaper and right now for the next five years is the time to make money. Come in and look over my list.

E. M. SHUTT

The Real Estate Man Upstairs in Court House



When in THE DALLES Stop At the Motor Service Company Garage

OPEN ALL NIGHT

Vulcanizing, Auto Supplies. WE WILL TREAT YOU RIGHT. Elgin—King Eight—Oldsmobile—Oakland

Special SALE

Folgers Golden Gate COFFEE

"The Best that Can Be Produced"

ONE Week Only!!

1-2 lb. Can given with each 2 1-2 lb. Can
1 lb. can given with every 5 lb. Can
THIS MAKES A SAVING TO YOU OF

20 Per Cent

To your advantage to buy now

Phelps Grocery Company

Combination Sale

of Work Horses and Dairy Herd of Jerseys

Saturday, June 26, '20

AT 1 O'CLOCK P. M.

At Vaughan & Parker Ranch

One-quarter mile North of Heppner, Ore.

Vaughn & Parker will offer for sale their choice herd of twenty young Jersey cows and their registered Jersey Bull.

These cows are all young and bred from Oregon's most select stock. Considering the scarcity of dairy cows of the type of this herd, and the high prices prevailing for dairy stock in the dairy sections of our state, this sale offers a rare opportunity for the purchase of the best stock obtainable for dairy purposes.

Mr. Thomas Matlock

will offer for sale 25 head of work horses and several draft colts. Mr. Matlock's work horses are of draft type, from 1400 to 1600 in weight and well broken. Any one in the market for work horses for harvest or for general work will find what he desires in the horses offered for sale by Mr. Matlock.

Six months' time will be given on approved bankable notes, bearing 8 per cent interest per annum.

Owners

VAUGHAN & PARKER and T. J. MATLOCK

F. S. PARKER, Clerk

F. A. McMENAMIN, Auctioneer

FISK TIRES

BUY satisfaction when you buy tires. Fisk Tires meet any comparison, any competition. Then there is the assurance of the Fisk Ideal.

"To be the best concern in the world to work for and the squarest concern in existence to do business with."

Next Time—BUY FISK

Chas. H. Latourell

Local Dealer



BUYERS FOR TOWN PROPERTY

I have buyers for town property. If you want to sell, make listings with me today.

Wheat, Stock, Dairy Ranches For Sale

Arthur R. Crawford

Licensed Real Estate Dealer

Heppner, Oregon