

# STATE NEWS - - - SPECIAL FEATURE SECTION

Under this Heading Each Week Will be Found Up-to-the-Minute News of the World in Picture and Text, Showing the Doings of the Great, the Near-Great and Those Who Are Striving to Become Great.—Items of General News Interest Gathered From Over the State at Large.—Women's Activities and Fashions.—Humor From the Leading Humorous Papers.



**Full power in every drop**

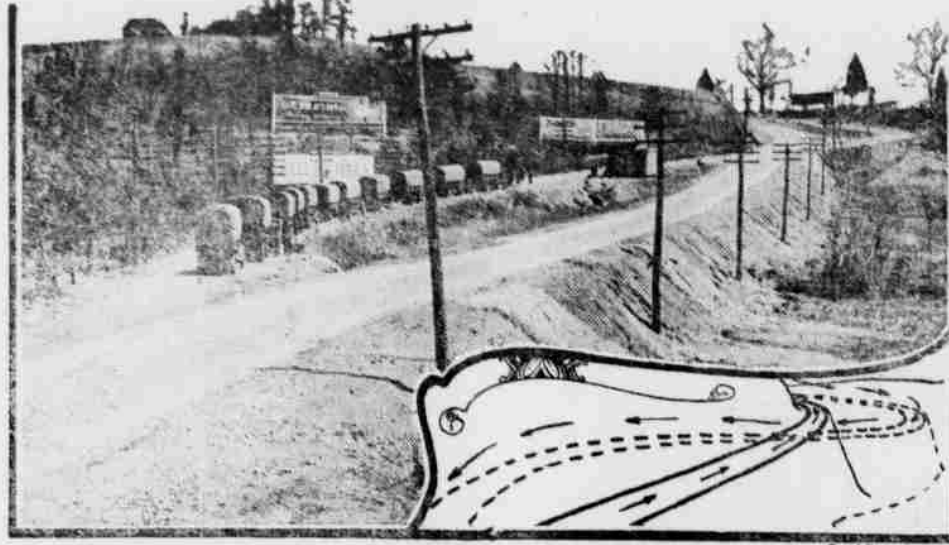
"Red Crown" is all-refinery gasoline with the full and continuous chain of boiling points necessary for ready starting, quick and smooth acceleration, steady, dependable power and long mileage. It is made to meet the requirements of your engine. Look for the "Red Crown" sign before you fill.

*The Gasoline of Quality*

STANDARD OIL COMPANY (California)

GEO. W. MILHOLLAND, Special Agent, Standard Oil Co., Heppner, Oregon

## ENGINEERS MASTER DANGER ON "DEAD MAN'S CURVE"



The increased casualties on "Dead Men Hills" all over the nation, due to the great volume of motor touring, as resulted in American engineers getting busy devising a method to eliminate the danger. Here is a picture and diagram of the problem solved. It is on "Dead Man's Curve" between Washington and Baltimore. The most dangerous curve has been eliminated by a 60-ft. as shown in the diagram. Speeding machines, formerly unable to take the curve, plunged over a 25-foot embankment into the field below. The string of army trucks are shown on the lower end of the new "S"

## Farm Reminders

Day-to-Day Hints on Big and Little Items of Program, by O. A. C. Specialists.

**Poultry:** The efficiency of the ration depends largely upon a liberal supply of green feed. The fowls should have all they will eat of some kind of green stuff every day. A profitable egg yield cannot be secured without it. Feed kale or other greens. Feed liberally and regularly and keep the hens busy.

**Horticulture:** The empty sugar barrel will cause no alarm to the thrifty housewife who understands and practices home drying methods when canning time comes next season.

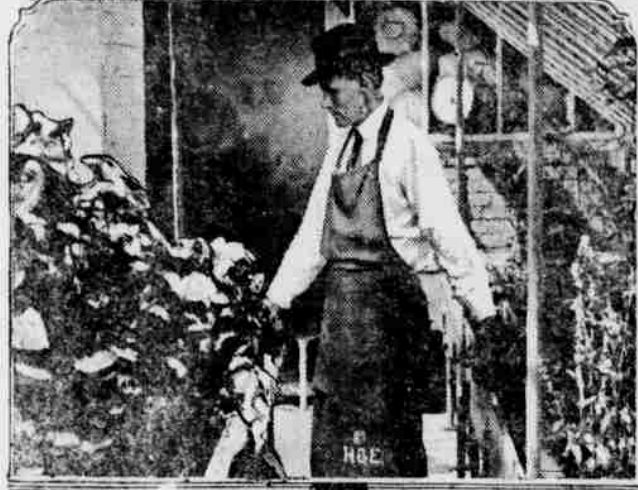
**Farm Management:** A dollar's worth of paint will cover more dollars' worth of lumber on your farm buildings today than ever before.

**Soils:** The amount of phosphorus in many Oregon soils as compared with other plant food elements is relatively low. If the phosphorus content of these soils is to be kept up they must receive an application of phosphate at least once in a rotation.

**Dairy:** Ensilage is now a complete feed. It should be fed with hay and some mill feed. For dairy cows 30 to 40 pounds daily in two feeds after milking is an ordinary amount. It can be fed to advantage to nearly all classes of livestock.

The costs of silos in some instances have been saved in a single year. The silo may be home made or of the manufactured or "patent" type.

## LIGHT, NOT CLIMATE, REGULATES PLANT LIFE



A. B. Cre, Department of Agriculture's scientist, has proved that it is light—and not climate—which controls plant growth. He has made violets produce two blooms in one year instead of one. He uses strong electric lights to gain added "exposures." He is here shown at his work in Washington

## Training State Blind Is Proven Practical

The practicability of training the blind in work that is remunerative is shown by the school for the blind maintained in Portland. Dozens of helpless sightless persons have been taken from the streets and taught trades and arts that have made them self supporting. It is because of the success of this institution which is open only to the blind of Portland, being maintained by the school district, that the blind people and others are seeking now to have a state institution which will enable the blind throughout the state to have the benefit of this training.

The question appears on the ballot at the state election May 21st in the form of a bill prepared by the Legislature providing a levy of one-sixth of one mill for next year to establish the institution and one-twenty-fifth of one mill each year thereafter to maintain it. The amount raised will be sufficient to provide for all the adult blind of the state.

The institution will be a means not only of making the lives of the blind happier by giving them vocational training and employment to occupy their dark hours, but it will also relieve charity of the increasing burden of caring for large numbers of them.

The committee made up of blind and others is receiving endorsements from all over the state from granges, and the prospects for the blind bill being adopted are considered exceptionally good. The measure has the ballot number 216 and 217. The committee is urging the voters to vote 216 X Yes.

Bear Plentiful on Birch Creek. Bear are reported plentiful in the east High creek ranges, according to the Pendleton-East Oregonian. Sheeponen in that vicinity report losses from inroads by the big brown animals and several have been seen but none have been killed so far as

known. A party of hunters will be organized to go out after the bear. Hugh Curran, formerly a sheep man of this county who now resides on Birch creek, is among those who report losses.

County School Superintendent Lena Snell Shurtz announces that a meeting will be held at the Eight Mile center school house next Sunday afternoon, at which time the educational measures on the primary ballot will be discussed. Speakers who are familiar with the measures, will be present and the public is cordially invited to attend.

## WHY LUMBER IS HIGH; WOODEN HATS HERE

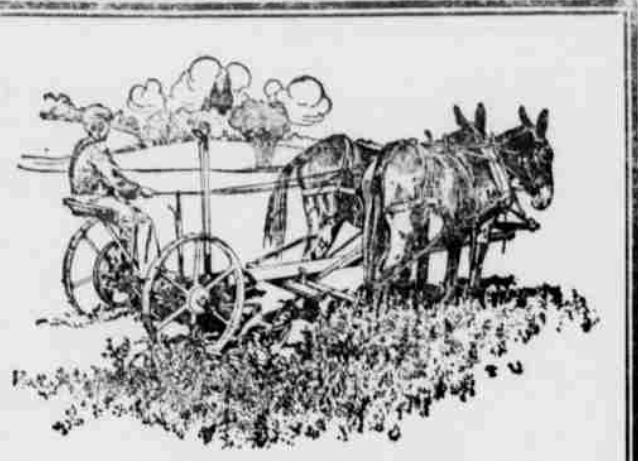


The wooden hat, purely an American creation, has taken Paris by storm. Its conception was inspirational as its designer sat in the Knickerbocker Theater at New York watching Henry W. Savage's new play of Cape Cod life, titled "Shavings." N. C. Smolin, New York millinery designer sat in at the opening performance of the show—and a floor full of shavings in one act gave him his idea. That same night he built the hat, presenting one to Vivian Tobin, shown here, and who appears in "Shavings."

## STARTS FIRST WOMAN BANK IN WORLD



This is Mrs. R. P. Runyon of Clarksville, Tenn., who has launched the first bank in the world for women. She is cashier and Mrs. Matt Lyle is cashier. The institution caters to women only. It encourages thrift and already has made some good loans



## A Boy Can Run a John Deere Dain Mower

While you are getting things in shape for making hay, put your boy on the John Deere Mower and let him do the cutting—he will do it just as well and just as easily as you can do it.

Because of the powerful lift, he can easily raise the cutter bar to pass over any field obstruction or to extreme height, when necessary. A foot lever, working in conjunction with the hand lever, makes the lift simple and easy.

He will never have to back up to get a start, even in the heaviest hay. The knife starts cutting the instant the mower is thrown in gear—no lost motion. You will see big advantages in the drive on this machine—it's extremely simple—the gears are so placed that one set holds the other set in mesh constantly. The John Deere will cut all of the grass for years to come—a simple adjustment takes up all lag in the cutter bar, without affecting the centering of the knife. If the knife ever needs re-centering, a special adjustment is provided. The John Deere is the simplest, most powerful and best-built mower we have ever seen. We know it will appeal to you.

**Peoples Hardware Co.**  
HARDWARE and IMPLEMENTS  
Heppner, Oregon

**F. R. BROWN**

Life — Accident — Health — Fire Insurance

Three Good Heppner Residences For Sale

FARM LANDS CANADIAN LAND

I Buy Grain—Sell Real Estate

UP-STAIRS IN ROBERTS BUILDING  
Heppner, Oregon

**Chandler Garage**

Reopened. Mr. Ager, formerly of Hall & Ager (Oregon Garage) in charge.

High Class Repairing, Etc.

Fabric Tires, All Sizes  
25 Per Cent Discount

Agent for  
Chandler and Cleveland Cars  
Garford Trucks

This space reserved for

**Scott & McMillan Warehouse**

Successors to Leach & Scott Warehouse  
Lexington, Ore.

**Willard Service Station**  
BATTERIES RECHARGED  
**The Lexington Garage**  
FREDERICKSON BROS, Props.  
We Sell Goodyear and Racine Tires  
Repair Work Oils Greases

C. W. McNAMER B. F. SORENSON  
**CENTRAL MARKET**  
McNamer & Sorenson, Props.  
BEEF, PORK, MUTTON, VEAL, POULTRY  
—and—  
FISH IN SEASON  
Give Us An Opportunity to Serve You  
Gilman Building Willow Street

**Transfer and General Hauling**  
We do a transfer and general hauling business of all kinds.  
Let us figure with you on that next job.  
We will GUARANTEE SATISFACTION.  
**BARNARD & EMRY**

**For the Young Business Man**

Some day the young business man will be a big business man.

Right now, perhaps, there isn't any money profit in carrying his checking account. But some day, as that account grows, and as the owner grows with it, the bank will be repaid for having counseled the young man and cooperated with him in his business success.

So, this bank invites the young business man who wishes to grow. We have seen many a small account grow into a large one and have earned the thanks for helpful service cheerfully rendered at all times.

We want your account. But, what is more, we want you as a growing business man to associate yourself with this bank.

**FARMERS & STOCKGROWERS NATIONAL BANK**  
Heppner Oregon

**HOME SWEET HOME**  
by Jack Wilson

S-S-H - DON'T SAY ANYTHING - I'VE GOT A SURPRISE FOR DONALD! - THE OL' GRAY MARE'S GOT A COLT!

HE WILL BE TICKLED STIFF!

TELL ME WHAT 'TIS, UNCLE ED?

YOU JUST WAIT A MINUTE AND SEE FOR YOURSELF!

???

THERE IT IS! - How DO YOU LIKE IT?

ALL RIGHT! - BUT WHERE ARE ITS ROCKERS?