

SHORTAGE OF LABOR MAY CUT CROP ACREAGE

City Life and Industry Draw Workers Away From Field Work, Says Market Specialist.

Oregon Agricultural College, Corvallis, April 1.—Oregon farm crops acreage may be cut down this year by the scarcity and high cost of farm labor, says Paul Mehl, marketing specialist.

"Higher wages and shorter hours are drawing laborers to towns and cities," he observed. "Shipyards, lumber mills and other big industries are speeding up production to meet increased demands. Employment was recently offered to thousands of shipyard workers in San Francisco through advertisements in all the Portland papers."

Returning soldiers usually drift to the cities, Mr. Mehl notes. After their war experiences they prefer work there where hours are shorter, wages higher, and conveniences and entertainment better. Their concentration in cities does not seem to create a labor surplus, as they are readily absorbed into the industries.

"Most of those who do return to the farms are young men working to own a farm, or are farmers' sons," declares Mr. Mehl. "The great increase in farm property values makes it possible for them to buy small tracts only, as very few laborers have capital."

"Should the government make more lands available a good many ex-service men would return to the farm. This is shown by the many inquiries reaching the college concerning the lands recently opened to settlement in southern Oregon. Long time loans for development are offered by the government with these tracts."

Much Seed Corn Damaged.

A great deal of seed corn in Western Oregon was ruined by the heavy December freeze, and all corn not thoroughly dried out or protected from the low temperature was rendered unfit for seed. All corn should be tested before used as seed, warns the farm crop department of the O. A. C. experiment station.

Steers Gain On Silage.

When William Buckner of Granger put up his silo last fall he began feeding his steers ensilage. In the 75 days of feeding one steer gained 320 pounds and two others gained all thru the period at the rate of three pounds a day, says the Benton County Farm Bureau News. They received 45 pounds of silage a day, with clover or vetch and cheat hay.

Arch Z. Barnard made a trip to the Ike Howard ranch near Ione last Saturday with a load of household goods belonging to Marshall Fell. Mr. Fell is moving his family to the Howard ranch, which he will operate for the next few months for Fred Buchanan, the new owner.

Our Extraordinary Announcement

With the beginning of the New Year we are pleased to announce the fact that we are exclusive agents for

**John Deere Plows
and
Oliver Chilled Plow Works**
"THE LINES THAT LEAD"

We feel that we are very fortunate in securing the exclusive sale of the above lines, as each item has been thoroughly tested and tried out and therefore we know beforehand the success that such lines must meet in the hands of any dealer. We shall endeavor to merit a continuance of your patronage by selling nothing but lines that we know are without question a success for the purpose intended.

Peoples Hardware Company
Heppner, Oregon

L. MONTERESTELLI

*Marble and Granite
Works*

PENDLETON, OREGON

Fine Monument and Cemetery Work

All parties interested in getting work in my line should get my prices and estimates before placing their orders

All Work Guaranteed



FREE!
With every Vacuum Cup Tire bought at our store we will give **ABSOLUTELY FREE** one "Ton Tested" Tube of corresponding size—an indispensable combination for the motorist who demands absolutely highest quality.

This is done to give our customers every advantage of economical early-season buying and to give prospective customers an opportunity of proving for themselves what our regular customers know—the supreme wearing qualities of Vacuum Cup Tires and the *guaranteed* effectiveness of the Vacuum Cup tread on wet, "skiddy" pavements.

This offer is **LIMITED**. Orders placed now in anticipation of Spring and Summer requirements mean a very substantial saving in your tire equipment.

Adjustment basis—per warranty tag attached to each casing:
Vacuum Cup Fabric Tires 6,000 Miles
Vacuum Cup Cord Tires 9,000 Miles



Universal Garage

Hill & Johns

Heppner, Ore.

G. T. WANT ADS ARE SURE RESULT GETTERS. Use them.

Home Builders!!

YOUR OPPORTUNITY IS HERE

I have long since believed that one of the first and most necessary requisites for the upbuilding of a community is good wholesome water. Now that Heppner proposes to supply this factor, and having often been requested to sell building sites out of my East Side property, I have concluded to put it on the market for sale in lots and blocks, and the plat is now nearing completion under the supervision of Mr. S. C. Martin, a Civil Engineer of wide experience.

The tract is easily accessible, has a fine view and its subdivision makes it desirable as home sites. One of these days you will want a home in Heppner. Why not buy a lot now when it can be had at a reasonable price, on very easy terms, and in what is surely destined to be a most beautiful residential district.

If you have never walked up on the hill do so now. You will be surprised at the beauty of the location with a view scarcely anticipated, Mt. Hood being clearly outlined in the distance. Candidly, I am surprised and much gratified at the easy grades possible to reach the property, as worked out by Mr. Martin, who is on the ground, and who will be pleased to give any information concerning the plat.

Perhaps it is not entirely out of place to say that in platting this property I am as much interested in making it a beautiful home site as I am in the profit that may be realized, but I do not want any one to buy unless they feel it will be profitable to do so. Nevertheless, I have no hesitancy in saying that in my opinion, before you have made your last payment, under the liberal terms I propose to offer, the lots will have greatly enhanced in value.

Watch this space for subsequent information.

J.W. Morrow

White Star Flour

Its a Home Made Product
and leads all other
brands

WHITE STAR is the standrd flour in this section.
Your Grocer Has It.

Complete Elevator and Warehouse Facilities. Both
bulk and sack grain handled.

WE BUY WHEAT

**HEPPNER FARMERS
ELEVATOR CO.**

U. S. Trucks

THE UNITED STATES MOTOR Truck Company does not boast, but we call your attention to size as *proof* of performance.

People do not build big plants on small achievements. The United States Motor Truck Company is one of the biggest in the business because they are building the Best Trucks.

It pays to do business with a concern that can deliver the best product in a dependable manner.

United States Motor Trucks are built in 1 1-2 to 6 ton capacity. We offer them to you as the best. Let us prove it.

Fear & Jennings

Local Dealers
UNITED STATES MOTOR TRUCKS

720-Acre Creek Ranch

50 acres under ditch, 35 acres of number one alfalfa, 50 more can be put under ditch. All kinds of good barns and out-buildings. Good orchard. One mile from school.

An ideal home and a first-class stock ranch.

SEE ME TODAY.

ROY V. WHITEIS

Heppner, Ore.
HAVE YOU ANYTHING TO SELL? LIST IT WITH ME.

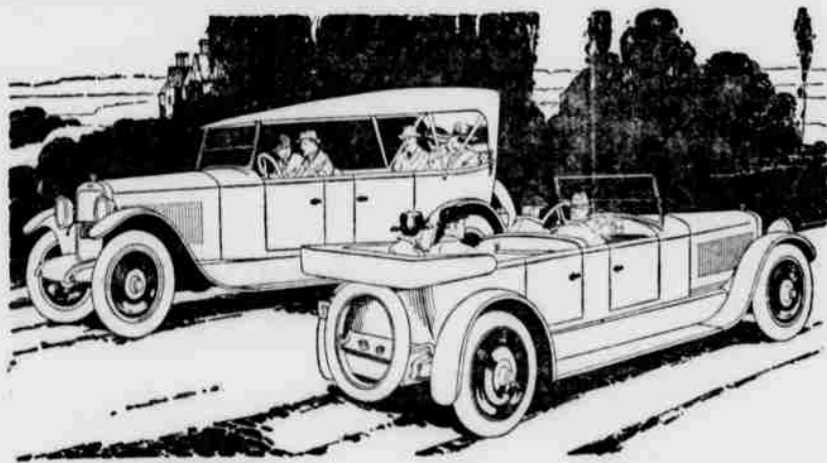
We Have a Nice Lot of
Baled Wheat Hay For Sale

If you are interested call us.

**Leach & Scott
Warehouse**

Lexington, Ore.

CHANDLER SIX Famous For Its Marvelous Motor



Two Great Chandlers Right Out In Front

HERE are two Chandler Six models which the big and constantly expanding Chandler factory production has never been able to build in volume that could supply the demand of discriminating motor car purchasers. They are the Chandler Six Touring Car and Dispatch Car, the former a big, handsome, roomy, comfortable, real seven-passenger car; and the latter a trim, smaller car, suggestive in its appearance of all the good things of outdoor life. The Dispatch Car has a touch of snappy style in its clean lines, and is strikingly finished in the beautiful Chandler Rainbow Blue. It seats four persons in restful comfort.

Both the Chandler Six Touring and Dispatch Cars are mounted on the same standard Chandler chassis, developed, through seven years of manufacture, to a surpassing point of excellence and famous for its really marvelous motor. The Chandler Car is priced much lower than other cars which may, perhaps, compare with it.

If you want your new Chandler
this Spring, place your order now

SIX SPLENDID BODY TYPES

Seven-Passenger Touring Car, \$1895
Four-Passenger Roadster, \$1895
Four-Passenger Dispatch Car, \$1975
Seven-Passenger Sedan, \$2895
Four-Passenger Coupe \$2795
Limousine, \$3195
(All Prices F. O. B. Cleveland, Ohio)

MARTIN REID, Local Dealer

• CHANDLER MOTOR CAR COMPANY, CLEVELAND, OHIO