

The Crystal Swinging Wringer



Crystal

Electric Washer & Wringer

E.J. STARKEY, Agent—Gilman Building, Heppner, Oregon



Drive to Schempp's

Up-to-date Service Station for Autoists and truck drivers.

Zerolene Cup Grease, Red Crown Gasoline, Pearl Oil, Mica Axle Grease

POULTRYMEN—We are agents for the Licene Co. and carry all their products.

G. M. SCHEMP

Willard Service Station

BATTERIES RECHARGED

The Lexington Garage

FREDERICKSON BROS, Props.

We Sell Goodyear and Racine Tires

Repair Work Oils Greases

C. W. McNAMER B. F. SORENSON

CENTRAL MARKET

McNamer & Sorenson, Props.

BEEF, PORK, MUTTON, VEAL, POULTRY

—and—
FISH IN SEASON

Give Us An Opportunity to Serve You

Gilman Building

Willow Street

Transfer and General Hauling

We do a transfer and general hauling business of all kinds.

Let us figure with you on that next job. We will GUARANTEE SATISFACTION.

BARNARD & EMRY

Value of Credit

A CHECKING account is the first step toward establishing credit with a bank.

And credit today is a real asset. Yet it is what you make it.

The right credit at the right time, at the right bank may be worth more to you than a batch of letters presented by you as a stranger.

We seek growing accounts of growing business men—men who will come to us for advice, and who will want the friendship of a strong bank when credit is needed.

This bank will be glad to meet you and serve you. It is a pleasure, as well as good business, to have young men grow with us.

FARMERS & STOCKGROWERS NATIONAL BANK

Heppner Oregon

STATE NEWS - - - SPECIAL FEATURE SECTION

Under this Heading Each Week Will be Found Up-to-the-Minute News of the World in Picture and Text, Showing the Doings of the Great, the Near-Great and Those Who Are Striving to Become Great.—Items of General News Interest Gathered From Over the State at Large.—Women's Activities and Fashions.—Humor From the Leading Humorous Papers.

STATE NEWS

A. B. Lamb, Pioneer, Is Dead.
A. B. Lamb, Eastern Oregon pioneer, passed away at his home in Fossil on Sunday, March 21, after an extended illness. He was a native of Wayne county, Indiana, being born on the 16th day of December, 1853. He had been a resident of this part of Oregon since 1880 and started the first drug store in Fossil in 1884, in which occupation he remained up until the time of his death. He was married in 1883 to Margaret Anne Ross. The widow and two children Howard M. Lamb and Mrs. Howard Gove survive.

Two New Mills For Eugene.
Eugene, Ore.—Two new sawmills will be erected in the upper Willamette south of Eugene at once, according to an announcement made recently. E. E. Smith and associates, under the name of the Oakridge Lumber company and who recently bought 7,000,000 feet of government timber on Salmon creek above that town, have bought the machinery for a mill of 35,000 feet capacity. The other mill will be erected by the Edwards Lumber company at Landax and this plant will have 25,000 feet capacity.

California Woman Loses Life on Columbia Highway.

Mrs. Elsie Pollock of Yreka, Cal., plunged to her death over a high cliff at Shepherd's Dell on the Columbia River highway last Sunday, when she was overcome with dizziness. This is the first accident of this character ever occurring on the highway. Mrs. Pollock was with her husband and his brother and wife, a wedding party of four and was standing on the edge of the cliff to be photographed when dizziness caused her to lose her balance.

LIFE AT WHITE HOUSE ABOUT NORMAL AGAIN



The home and social life at the White House is about normal again—the first since the illness of the president, which started in October, 1919. This is the first picture taken of him since then—the occasion being a ride in an open car with Mrs. Wilson. The insert of Mrs. Wilson was taken a few days previous, when she made her first public appearance in attendance at the annual mobilization of the American Red Cross at Washington, where she occupied the place of honor on the platform.

HIS LIFE FIGHT TO CONSERVE FORESTS



Colonel W. B. Greeley, new chief of the U. S. Forest Service, climbed to his place through sheer ability. He fought forest fires in Montana and Idaho. He headed Uncle Sam's forestry troops in France and always he has handled the job with credit to himself. He succeeds Colonel H. S. Graves.

EASTER EGG BUNNY



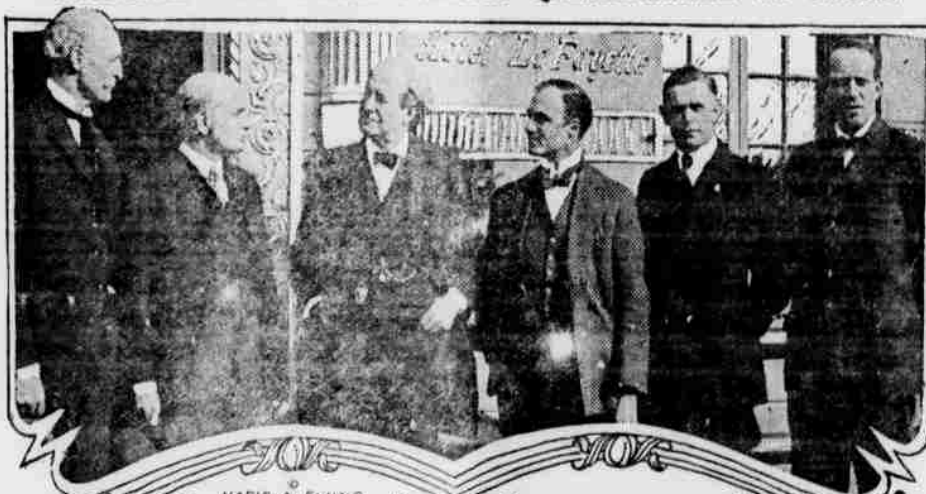
This is an entertaining Easter stunt for the kiddies. After the egg is dyed, clip ears from same colored paper and paste, as shown. Then with heavy black crayon pencil or water-color paints paint on the eyes, nose and mouth. Crack slightly at side and stick in thin broom straws.

JANE ADDAMS BACKS DIRECT TRADING



Jane Addams, foremost American woman welfare worker and pioneer in big city slum work, sees living costs relief in direct trading between farm and city and endorses the cooperative measures advocated in the Farmer-Labor Congress.

NATIONAL FARM BOARD SUBMITS QUESTIONNAIRE TO BRYAN



The National Board of Farm Organizations, whose duty it is to put questionnaires to all presidential candidates, regardless of party, as to their stand on agricultural issues, goes merrily about its work. Here are members of the board who put the questionnaire to William Jennings Bryan, even though the Commoner has not yet announced himself in the race. However, Mr. Bryan indorsed the Farm Organizations' decision to submit such questionnaires. Those in the picture (left to right), Clifford Pinchot, Charles S. Barrett, Mr. Bryan, Charles W. Holman, J. B. Houston and Charles A. Lyman.



Far Better Bread!

THE KIND YOU'VE BEEN HANKERING FOR!

Here It Is!

Heppner bread is a FULL, PLUMP loaf, with the same BODY to it that MOTHER used to make!

Does it go down EASY?

Better BELIEVE it does! Greatest domestic bread in the world!

22c the large size; 11c the small

SEND FOR SOME TODAY

Heppner Bakery

Clothes

That your friends admire—that's the kind you want

Heppner Tailoring & Cleaning Shop

Hand Tailoring

costs no more than ordinary clothes; in fact less, for your garments last and look good longer. Have your next suit made-to-measure.

Our Tape Line Is Ready—Are You?

G. FRANZEN, Proprietor

ONLY "QUALITY PRINTING" PRODUCED AT THE G.T.

"You're the Man to be Satisfied"

says the Good Judge

You get a whole lot more satisfaction from a little of the Real Tobacco Chew than you ever got from the old kind.

The good, rich tobacco taste lasts so much longer. You don't need a fresh chew so often. That's why it costs you less.

Any man who uses the Real Tobacco Chew will tell you that.

Put Up In Two Styles

RIGHT CUT is a short-cut tobacco
W-B CUT is a long fine-cut tobacco

Weyman-Bruhn Company, 230 Broadway, New York City

"PERMANENT AS THE PYRAMIDS"

Concrete Pipe Co.

Mfgs.

SEWER AND WATER PIPE
IRRIGATION PIPE
CULVERT PIPE
CEMENT PRODUCTS
HOLLOW SILO BLOCKS

PHONE 467

1003 N. 10th Street,
WALLA WALLA, WASH.

OUR PRICES RIGHT—OUR PRINTING THE BEST—G.T.