

### WHAT THE DEPT. OF AGRICULTURE IS DOING

#### Mapping Wheat Varieties.

For the first time in the history of wheat growing in America it will soon be possible to map the distribution of wheat varieties and to learn the large number of acres under which the same varieties are known in different parts of the country. This result has been made possible by a comprehensive survey of varieties made by the United States Dept. of Agriculture, through the Bureau of Plant Industry and the Bureau of Crop Estimates working in cooperation. Schedules were sent to about 65,000 crop reporters to determine the distribution of wheat varieties, the source from which they came, the date of their introduction into the country, the percentage which each represents of the total wheat acreage in the community. The returned schedules have been studied, and about a thousand letters of inquiry have been sent asking for additional information and samples.

#### Electrocution for Insects.

Electrocution of insects infesting packed cereals will result in great savings to producers and consumers if expectations are realized, says the Bureau of Entomology of the United States Department of Agriculture, which has been carrying on work of this nature. A commercial machine for sterilizing cartons of cereals after the latter have been sealed has been installed in a large cereal factory, with every promise of practical value.

Experimental work to determine the usefulness of fumigation in lessening or preventing the enormous waste taking place through insect attack to stored goods in warehouses, though as yet extending over only a short period, has yielded practical results of great value. The value of cold-storage temperatures in preventing insect damage has already been proved. Detailed data regarding the effect of low temperatures upon various insects attacking stored products are being secured.

#### Why Plant Corn Early?

Earlier planting of large, productive varieties of corn is frequently much more profitable than the normal planting of early maturing varieties. Proof of this has been obtained in many instances, announces the Chief of the Bureau of Plant Industry, United States Department of Agriculture, in reporting on the results of experiments conducted to demonstrate the practicability and value of the earlier planting of corn. By much earlier than the normal planting it has been found that larger varieties can be profitably grown for ensilage in northern localities with much better yields than can be had from the smaller native varieties planted at the usual date.

In the South, by planting small short-season varieties earlier than normal, much earlier maturity can be secured, affording a supply of corn for very early feeding. Many rather soft varieties that rot badly when planted late produce sound corn when planted early in southern localities. The planting of short and long season varieties in alternate rows has increased yields where moisture is a limiting factor.

Varities differ, it has been found, in their ability to adopt themselves and their grain production to varying stands. Prolific varieties, when given increased space, have shown ability to increase their grain production much more satisfactorily than have the single ear varieties, because of their ability to make up for deficiency in stand.

The studies made by the department specialists have resulted in isolating uniform types within a variety. It has been found that so-called varieties of corn are largely conglomerates of many distinct types, and to arrive at basic facts in breeding work it is necessary to segregate these uniform types.

#### May Grow All Our Figs.

It is not improbable that this country will soon produce all the figs it needs. This statement is made by the Chief of the Bureau of Plant Industry, United States Department of Agriculture, in his report on the progress of Smyrna fig culture in California. Much of the success of this enterprise has been due to the fact that the department has been able to maintain a caprifig orchard at Loom-

**COLDS breed and Spread INFLUENZA**  
KILL THE COLD AT ONCE WITH  
**HILL'S CASCARA QUININE BROMIDE**  
Standard cold remedy for 20 years—on tablet form—safe, sure, no nausea—breaks up a cold in 24 hours—relieves grip in 3 days. Money back if it fails. The genuine box has a Red top with Mr. Hill's picture. **At All Drug Stores**

is, from which caprifigs have been distributed free to growers. Before this distribution was arranged for many small growers of Smyrna figs became discouraged and some even dug up their orchards. The relationship between these two varieties is that the Smyrna fig is fertilized by an insect which lives on the caprifig. When Smyrna figs and caprifigs are planted together the caprifigs do not bear enough fruits to caprify the crop properly until several years after the trees begin to bear. For this reason a young orchard is dependent on importing the needed caprifigs during the first few years. It was to supply this need that the fig orchard at Loomis was leased by the department. Many new varieties of caprifigs have been brought to light, some of them very important in commercial Smyrna fig culture. Many thousands of seedling figs have been distributed to cooperators in the fig-growing regions of California, Arizona, and Texas, and some promising new varieties have been originated by a proper selection of male pollen.

In the fall of 1917 the fig insect was established in some old seedling caprifig trees in Brunswick, Ga., and since then a number of caprifig trees have been similarly treated. The result is that it has been possible to caprify and bring into bearing many sterile Smyrna fig trees growing in the Southern States. Some of these trees bear a very high grade of fruit, promising for use as fresh fruit for canning. It is still doubtful whether figs can be grown in the southeastern United States to advantage in a commercial way, but it is a matter of interest and of some economic significance that many old sterile fig trees in this region are really Smyrna seedlings. Approximately half of the trees are Smyrna figs and the others are caprifig varieties.

#### Banishing Animal Diseases.

Victory over most of the destructive diseases of animals is in sight, and in a number of cases eradication is nearly complete. This statement is made in the annual report of the Chief of the Bureau of Animal Industry, United States Department of Agriculture. Cattle scabies, which in 1906 was prevalent in nearly one-half of the United States now appears only as outbreaks in limited areas. These outbreaks are being suppressed. Eradication of sheep scabies, which in 1906 existed in more than one-half of the land area of this country, is now about nine-tenths complete. The cattle tick, which causes splenic fever among cattle, and which has been the greatest obstacle to the de-

velopment of the livestock industry in the south, has had its domain reduced from more than 700,000 square miles in 1906 to 215,581 square miles on December 1, 1919. Progress has been continuous year after year, and the tick should be extinct in this country in 1924.

Eradication of animal tuberculosis has progressed as fast as the work could be handled by the veterinarian force employed; in fact, there has been a waiting list of herds to be tested. Animal TB probably will not be banished from the United States in the life of this generation, but it has been proved that the disease can be eradicated from small areas, and there is little doubt that eventually it will disappear from this country.

Meanwhile the Bureau of Animal Industry continues its vigilance to prevent the introduction from foreign countries of such dangerous animal scourges as foot-and-mouth disease, surra, rinderpest, and other maladies slightly known or unknown to the farmers of the United States.

#### Better Seed Potatoes.

Seed stocks of Irish potatoes commonly available to growers contain many mixtures, not infrequently diseased and as a rule not as productive as they should be. The Chief of the Bureau of Plant Industry, United States Department of Agriculture, makes this statement in reporting on the progress of work in developing improved seed stocks. It is a recognized fact, he says, that the yield of potatoes in this country is far below that secured in some other countries,

and the difference is commonly attributed to the use of relatively inferior seed stocks. Seed improvement work is being carried on by the department in cooperation with agricultural experiment stations in practically all of the important potato-producing states. The best seed stock of the leading varieties in different regions is being grown in the various states. During the progress of the season the various plots are inspected several times for the purpose of eliminating diseased plants and those which are not true to name or to type. At harvest time carefully studied selections are made for the purpose of obtaining the best strains of the different varieties. These potatoes in turn will be used for seed purposes with a view

to developing stocks that are true to name, true to type, free from disease communicable through the seed, and that possess high-yielding proclivities.

Mr. and Mrs. Clark Stephens of Hardman returned home recently from a visit to Mrs. Stephens' parents, Mr. and Mrs. J. T. Roe at Mount-

#### TACOMA GUN STORE, INC.

Tacoma, Wash.

Largest stock of Hunters' and Trappers' Supplies in the Northwest. Es-

pecial attention to mail orders.

Send one cent stamp for catalogue.

and the difference is commonly attributed to the use of relatively inferior seed stocks. Seed improvement work is being carried on by the department in cooperation with agricultural experiment stations in practically all of the important potato-producing states. The best seed stock of the leading varieties in different regions is being grown in the various states. During the progress of the season the various plots are inspected several times for the purpose of eliminating diseased plants and those which are not true to name or to type. At harvest time carefully studied selections are made for the purpose of obtaining the best strains of the different varieties. These potatoes in turn will be used for seed purposes with a view

#### The Crystal Swinging Wringer



## Crystal

Electric Washer & Wringer

E. J. STARKEY, Agent  
Gilman Building Heppner, Oregon

to developing stocks that are true to name, true to type, free from disease communicable through the seed, and that possess high-yielding proclivities.

#### TACOMA GUN STORE, INC.

Tacoma, Wash.

Largest stock of Hunters' and Trappers' Supplies in the Northwest. Es-

pecial attention to mail orders.

Send one cent stamp for catalogue.

#### NOTICE

There came to my place about June 1, four miles southwest of Hardman, the following described animals: one brown horse, white stripe in face, branded with spear on right hip; one black yearling horse, no brand. Owner may have same by paying all costs. J-122  
LOTUS ROBISON,  
Hardman, Ore.

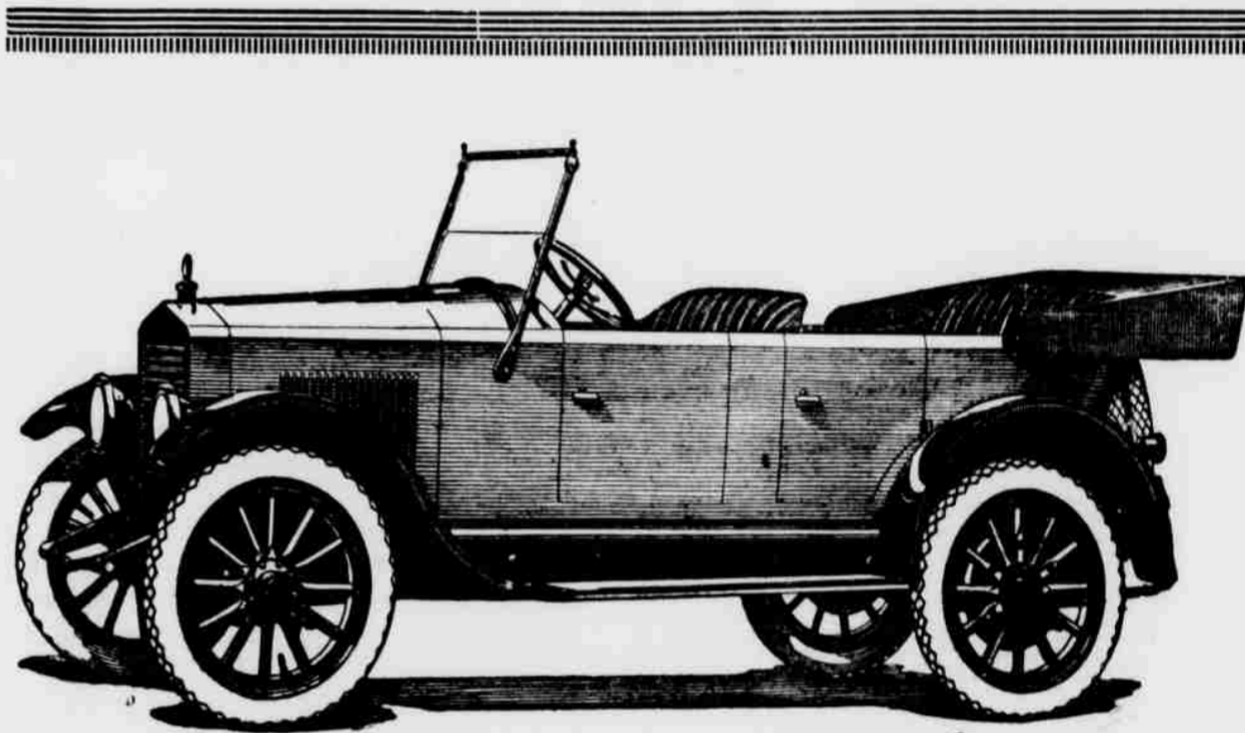
### How to Save Your Teeth

The quickest way to make bad teeth worse is to leave them alone, and the quickest way to save them is to go to a good dentist and have them cared for right away.

The advantage of having your dental work done by Registered Dentists using the E. R. Parker System is that particular attention is given out-of-town patients, and you don't have to make so many calls. Another advantage is that you need have no fear of pain, for every safe method is used to do the work without hurting.

Nothing but fine dentistry is done in any of the twenty-four E. R. Parker System offices, and while prices are moderate, every patient is guaranteed full satisfaction. Examinations and advice are free. The nearest E. R. Parker System office is at

755 Main Street, Pendleton.  
326 Washington Street, Portland.



## How to Guarantee Spring Delivery of Hudson and Essex Open Models

No large Money Outlay Required. Make Your Choice Now. We Will Store It For You and Insure You Against Disappointment

In the light of the year just closed, it is not conjecture to assert that a shortage of Hudson and Essex cars is sure to recur this Spring.

More than 22,000 Essex cars were sold in the past twelve months. The factory capacity was increased time after time. Beginning with a daily production of 30 cars, it reached 125 cars daily.

Yet we were never able to overtake advance orders.

A similar condition was true with respect to Hudson.

You remember how scores waited in vain for delivery. Perhaps you were among those disappointed.

Practically our entire quota of both Hudson and Essex cars were sold weeks ahead. Few were able to get delivery who had not placed their orders ahead.

#### Settle the Delivery Worry Now

This year we have arranged a special plan to guarantee you delivery, during the acute rush of orders.

It will require no large outlay of money. You can place your order now. We will have your car ready for you on the day you want it.

Thus you dispose of all concern about getting your Hudson or Essex when you want it. It will be a source of satisfaction to know you are insured against having to accept some less wanted car, when the season for open types crowds the market with more buyers than we can supply.

If your preference is for a light car what choice equals the Essex?

It represents a new, unexpected value. It brings to the light car field such quality and fine performance as was hitherto found only among large costly cars.

#### Note the Quality of the Essex

If speed is your requirement see if the Essex does not meet it. Where luxury and finish are demanded compare the Essex with any car.

It is needless to speak of the Hudson. All know what it has done. Its records, which prove supremacy throughout the range of performance, are confirmed by the satisfaction that more than 80,000 owners know in their Super-Sixes.

The supply of Hudsons and of Essex has never been sufficient for the demand.

You can only insure yourself against disappointment in getting either of these popular cars, by placing your order under the convenient plan we have set forth above.

"PERMANENT AS THE PYRAMIDS"

## Concrete Pipe Co.

Mfgs.

SEWER AND WATER PIPE

IRRIGATION PIPE

CULVERT PIPE

CEMENT PRODUCTS

HOLLOW SILO BLOCKS

PHONE 467

1003 N. 10th Street,  
WALLA WALLA, WASH.



## Before Buying Your Winter Shoes

Step in and look over our stock of heavy, hand-made work shoes for men.

We also have in stock the well known O'Donnell Shoe for men.

## C. M. Bowers

Shoe Shop

Main Street

Heppner

## Vaughn & Sons

G. T. WANT ADS ARE SURE RESULT GETTERS. Use them