

When in need of Staple or Fancy Groceries

remember we have a full
and complete stock.

PHELPS GROCERY CO.

Again Superintendent.
R. G. Dykstra of the Umatilla schools has been reelected for a consideration of \$1500 for the school year 1919-20. Mr. Dykstra hails from Polk County, Oregon, where he is well known in the educational world. His high standards and excellent quality of work has brought comment from the leading educators of the state.

Mr. Dykstra, who is a graduate of the Oregon Normal School, Weiser College, Weiser, Idaho, 1907. Student Pacific University, Forest Grove, Oregon, 1901. Oregon Normal, 1917. Taught school in Morrow county for three years, Polk county seven years. He has always made good in the school room, and his reelection is only an additional honor.—Hermiston Herald.

Entertains With a Valentine Luncheon.

Miss Martha B. Struck, adviser of the Junior Class, entertained the Juniors and the High School faculty with a luncheon Friday evening, February 14th, in the dining room of the Heppner High School. The table was prettily decorated with red carnations, asparagus fern, and valentine favors. At the close of the luncheon, tiny valentines were distributed which announced the engagement of Miss Struck to Mr. Albert J. Brunquist of Hood River.

L. MONTERESTELLI

MARBLE AND GRANITE WORKS

PENDLETON, OREGON

FINE MONUMENT AND CEMETERY WORK

All parties interested in getting work in my line should get my prices and estimates before placing their orders

ALL WORK GUARANTEED

Grand Ball

IONE, OREGON, FRIDAY, FEBRUARY 21, 1919

For the benefit of the Masonic and Eastern Star Lodges of Ione.

Music by Cummins' Orchestra
EVERYBODY WELCOME SUPPER IN THE HALL

THE BEST DANCE OF THE SEASON

COMMITTEE:

W. H. Cronk F. L. Christenson T. B. Buffington

Home Portraiture

Portraits taken in the home are often more natural and pleasing than when taken in the studio.

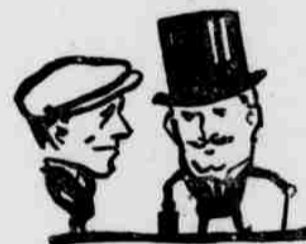
Until the 1st of March the people of Heppner can have pictures taken in their own homes at any time.

MAKE AN APPOINTMENT FOR THE BABY

C. S. Reeves

Room 16, Barnards Lodging House.

Bill says to
the Doctor—
sez'ze



"There may be some plugs that look bigger—but it's the good taste of genuine Real Gravely and the way it stays with you that counts."

Good taste, smaller chew, longer life is what makes Genuine Gravely cost less to chew than ordinary plug.

Write to:—
GENUINE GRAVELY
DANVILLE, VA.
for booklet on chewing plug

Peyton Brand
REAL CHEWING PLUG
Plug packed in pouch

GARY MOTOR TRUCKS GAIN A GREAT ADVANTAGE IN THE NORTHWEST

The establishment at Portland as headquarters for the **GARY COAST AGENCY** for the purpose of organizing the northwest and establishing distributors, dealers and agents for Gary Motor Trucks in every city, town and hamlet give the **GARY LINE OF MOTOR TRUCKS** a tremendous advantage. It means the extension of Gary service, with a full year's guarantee, and the establishment of the **GARY SYSTEM OF DISTRIBUTION, WITH EASY TERMS OF PAYMENT**, to every section where trucks can be used to advantage.

THE GIGANTIC STEEL INDUSTRIES of Gary, Indiana, are known throughout the world for the hundreds of millions of dollars invested and its tens of thousands of men employed and its output of steel products by the hundreds of thousands of tons for world-wide use. The superior quality of these Gary

products is the result of years spent in scientific research and experiment and unlimited millions invested in modern methods and equipment, and for the development of an army of intelligent, trained and skilled mechanics. **GARY MOTOR TRUCKS HAVE THE BENEFIT OF THIS MOST WONDERFUL EFFICIENCY** and have added another star to the established greatness of Gary, as a manufacturing center.

THE GARY LINE OF MOTOR TRUCKS comprises every size from one ton up to the special heavy duty type for pulling trailers and semi-trailers carrying twenty tons or more if desired. The Gary 3½ Ton with Dump Body equipment for road and construction work overpowers, outpulls and outclasses in load carrying qualities, any truck of its rating ever made or sold.

Gary Sizes Are Right. Gary Prices Are Right. Gary Terms Are Right.

MODEL	F	G	H	HU	K	V Special
CAPACITY	1 Ton	1 1-2 Ton	2 Ton	2 1-2 Ton	3 1-2 Ton	5 Ton
COAST PRICE DELIVERED	\$1990	\$2690	\$3050	\$3450	\$4250	\$4750

Ask your dealer or garage man for a detailed description of **GARY TRUCKS** or write for endorsements and specifications direct to

GARY COAST AGENCY
71 BROADWAY, PORTLAND, OREGON

Bargain --- Small Ranch

I offer for sale a small alfalfa ranch—93 acres. About 50 acres now in alfalfa; 53 acres all tilled under ditch, with water rights fully secured. A four-room house, small barn, hog sheds. A team, two wagons, buggy and two sets harness, some hay, all kinds farm implements and household goods go with ranch.

Price \$6000, on Terms

This place fully equipped to go right ahead with work.

ROY V. WHITEIS

WELL, I'M GOING TO
CHOP THIS CHERRY
TREE DOWN
NOW.



We sell
Honest
Hardware.

WHEN WE TELL YOU THAT A PIECE OF HARDWARE IS GOOD YOU MAY BET YOUR SWEET LIFE THAT IT IS GOOD.

WHEN WE PUT A PRICE ON OUR HARDWARE IT IS THE LOWEST POSSIBLE PRICE FOR THE HIGHEST POSSIBLE QUALITY. WE WANT YOUR TRADE FOR LIFE.

WHEN YOU WANT HARDWARE YOU WANT US.

Peoples Hardware Co.