

Machinery for the Farmer

Whether it be
**PLOWS, HARROWS, DISKS, WEEDERS,
DRILLS, WAGONS**

Or Something Along the Line of
Motors, Gas Engines or Automobiles

you will find what you want at

Vaughn & Sons

Agents for

Hudson, Super-six

Chevrolet

Get our figures first or last--Comparison of price with value will find you buying here.

FELLS

Pendleton Cleaning Works

GEO. D. FELL, Prop.

Cleaning Pressing Repairing

Men's Suits, Ladies' Dresses, Fancy Gowns,
Plush Coats, Velvet Suits, Furs,
Gloves, Waists, Etc.

The Only Thoroughly Equip-
ped Plant in Pendleton

WE DO IT BETTER

206 1-2 East Alta Street., Phone 169

PENDLETON, OREGON

FARM IMPLEMENTS



**OLIVER AND JOHN DEERE
PLOWS**

**HARROWS, DISCS, WEEDERS,
Etc.**

**VAN BRUNT AND THOMAS
DRILLS**

**BAIN AND WEBER
WAGONS**

**F AIRBANKS, MORSE & CO.
GAS ENGINES**

In fact, most everything in the im-
plement line.

GILLIAM & BISBEE

Will Supply You

"We Have It. Will Get It, Or It Is Not Made"

YES, THE GAZETTE-TIMES CAN PRINT IT

RECRUITS WANTED FOR ENGINEER'S REGIMENT

At the request of the War Department the Forester has designated Geo. H. Cecil, District Forester, Portland, Oregon, to assist in recruiting two battalions of loggers and lumbermen, as part of a second Forest regiment which will be known as the 20th Engineers (Forest) Regiment. Each battalion will consist of three companies of 250 men each, all of whom should be experienced loggers or mill men. Special request has been made for a limited number of men especially qualified for sawyers, sawmill engineers, fliers, ratchet setters, millwrights, electricians, edgermen, foremen, woods bosses, and motor truck operators. Information regarding this regiment can be secured by calling at the District Forester's office, Beck Building, Portland, Oregon, or at any Forest Supervisor's headquarters, in Oregon or Washington.

It is understood that the various companies composing these battalions will be scattered widely throughout the forests of France, where they will be called upon to cut timber and prepare it in the form needed for use by the military authorities as lumber, ties, poles, piling, fire wood, etc. Officers are already being selected and enlisted men are needed. They should be experienced woodsmen or sawmill workers. Service in these units will give such men a chance to take part in the war in the line which their life training and experience has particularly fitted them. For logging crews there are needed, skilled axmen, wood sawyers, tie hewers, skidders, teamsters and blacksmiths. For mill crews, millwrights, mill sawyers, circular saw fliers, mill engineers and experienced mill hands.

Applicants for enlistment must have reached their eighteenth birthday and not have passed their forty-first. They will be subject to the physical examination as required for the regular army. Men of draft age whose names have been posted by the "Local Board" for service in the National Army are not liable for enlistment. Other men of draft age will be accepted. Men with dependants will be required to give a certificate signed by them and their adult dependants, that they will not call upon the United States for financial support during the period of the applicant's enlistment. Enlistments will be for the period of the war. All recruits will be enlisted as privates, even though qualified for non-commissioned positions. Warrants for non-commissioned officers are issued if a man is found qualified by the regimental commander, after joining the battalion to which he is assigned.

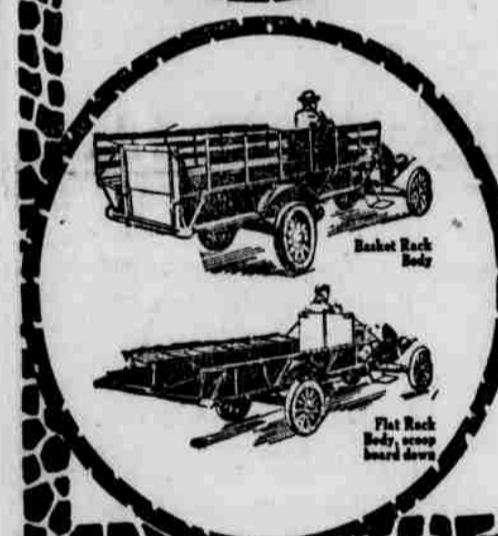
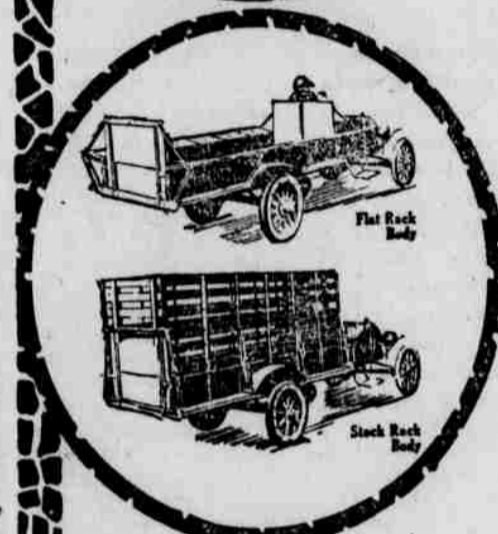
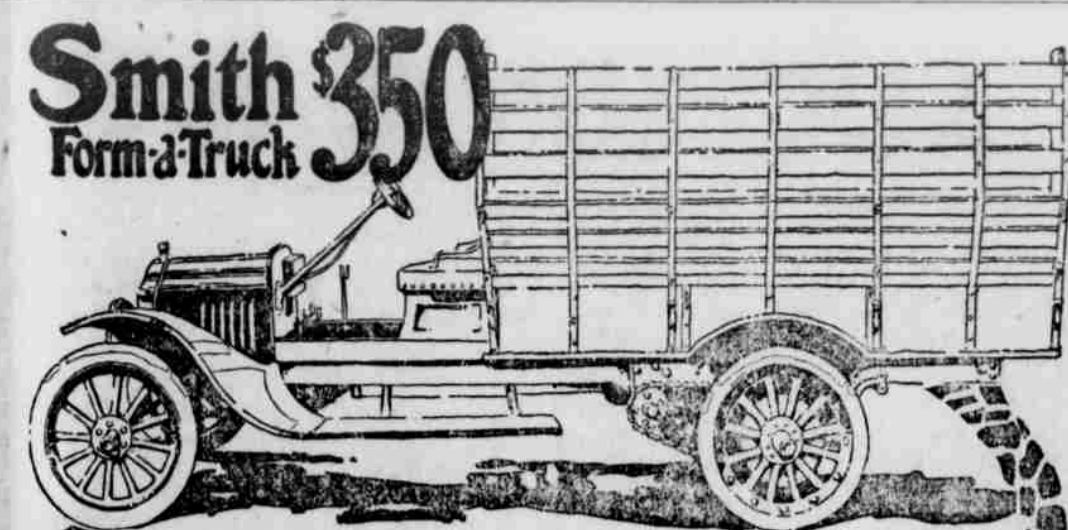
Pay will begin at the date of enlistment. Transportation and subsistence will be furnished to recruits by the recruiting officer. Enlisted men may arrange to have their families receive all or any portion of their pay during their absence.

The number of men in a battalion, their monthly pay, and military grade are as follows:

| Army Grade | Pay per Month in U. S. | Number of Men Foreign | Reg. | Bat |
|-------------------------------|------------------------|-----------------------|------|-----|
| Master Engineer, senior grade | \$81.00 | \$96.00 | 4 | 2 |
| Master Engineer, junior grade | 71.00 | 84.00 | 4 | 4 |
| Regimental Sergeant Major | 51.00 | 60.00 | 1 | |
| Regimental Supply Sergeant | 51.00 | 60.00 | 2 | |
| Battalion Sergeant Major | 51.00 | 60.00 | | 1 |
| Battalion Supply Sergeant | 51.00 | 60.00 | | 1 |
| First Sergeant | 51.00 | 60.00 | | 3 |
| Sergeant, first class | 51.00 | 60.00 | | 12 |
| Supply Sergeant | 44.00 | 51.20 | | 3 |
| Mess Sergeant | 44.00 | 51.20 | | 3 |
| Stable Sergeant | 44.00 | 51.20 | | 3 |
| Sergeant | 44.00 | 51.20 | 4 | 32 |
| Corporal | 36.00 | 40.80 | | 62 |
| Horseshoer | 38.00 | 44.00 | | 3 |
| Saddler | 36.00 | 40.20 | | 3 |
| Wagoner | 36.00 | 40.20 | 3 | 17 |
| Cook | 38.00 | 44.00 | 2 | 16 |
| Bugler | 30.00 | 33.00 | | 6 |
| Privates, first class | 33.00 | 36.00 | 6 | 201 |
| Privates | 30.00 | 33.00 | 12 | 402 |

It is understood that the first unit will be assembled at the training camp at American University, Washington, D. C., where they will receive military training and be kept preparatory for duty in France. Men wishing to enlist, may apply to the nearest of the following listing officers:

Geo. H. Cecil, District Forester, Beck Bldg., Portland, Oregon.
C. R. Seitz, Forest Supervisor, Eugene, Oregon.
H. B. Rankin, Forest Supervisor, Eugene, Oregon.
M. L. Erickson, Forest Supervisor, Medford, Oregon.
G. D. Brown, Forest Supervisor, Lakeview, Oregon.
V. V. Harpham, Forest Supervisor, Bend, Oregon.
Cy. J. Bingham, Forest Supervisor, John Day, Oregon.
E. Barnes, Forest Supervisor, Baker, Oregon.
R. M. Evans, Forest Supervisor, Baker, Oregon.
C. C. Hall, Forest Supervisor, Albany, Oregon.
Homer Ross, Forest Supervisor, Prineville, Oregon.
N. F. MacLuff, Forest Supervisor, Grants Pass, Oregon.
W. W. Cryder, Forest Supervisor, Pendleton, Oregon.



And any one of Eight Bodies in a Minute.

A SMITH FORM-A-TRUCK and the famous 8-in-i farm body covers every possible use for a truck on the farm—an exclusive Smith Form-a-Truck feature.

Simply pull lever and get any one of 8 combinations of farm bodies—stock rack—hay rack—hog rack—grain—flat rack—high flare board—flat rack, scoop board down. Then change from one type to another in an instant without a single tool.

Twice the Work of 2 Teams

Don't take your horses out of the field—don't delay farm work. Use Smith Form-a-Truck. Haul twice as much as two teams. And at one-half the cost. Yet it costs no more than a team and harness—\$350.

Use the Smith Form-a-Truck for hauling milk—grain—crops—feed—manure—lumber—coal—and everything else on the farm.

Save 2/3 Time

When you haul crops or milk to town with horses you must leave early. You get back late. Your day is wasted.

Smith Form-a-Truck will make the same trip in two-thirds less time. Save this time for profitable work on the farm.

Save 20 Acres and \$300

Government statistics show that in a single year four horses require the feed of 20 acres—and cost \$41 to feed and stable. Bedding, veterinary, medicine, shoeing, care—cost extra. The Smith Form-a-Truck costs only \$160 a year—and saves 20 acres.

Wonderful Economies

Less than 8¢ per ton mile, exclusive of driver's wages. 6,000 to 8,000 miles per set of tires—12 to 15 miles per gallon of gasoline—12 to 15 miles per hour. And repair expense practically nothing.

Smith Form-a-Truck costs you absolutely not one penny while idle.

Made for 6 Cars

The Smith Form-a-Truck attachment and a new or used Ford, Maxwell, Dodge Bros., Chevrolet, Buick or Overland, makes a fully guaranteed, powerful, strong, 1-ton truck. Every day you delay using a Smith Form-a-Truck on your farm you are losing money.

**ALBERT BOWKER,
SALES AGENT
HEPPNER, OREGON**

Healy was invited to call on the recorder he said he thought the speed limit was thirty miles an hour. He donated \$10 and costs.—Condon Globe.

Joe Batty, Eight Mile farmer was in the city Tuesday with a load of wheat and returned home with material which he will use in the construction of a new garage.

LUMBER MOULDING SCREEN DOORS SHINGLES ALL KINDS OF BUILDING MATERIAL

GET MY FIGURES BEFORE PLACING YOUR ORDER ELSEWHERE

H. C. GITHENS LUMBER YARD

MAIN STREET, HEPPNER, OREGON

Dr. Gunster

Graduate Veterinarian

at

PATTERSON & SON

Drug Store

Licensed Embalmer

Lady Assistant

J. L. YEAGER

FUNERAL DIRECTOR

Phone Residence

Heppner, Oregon

Mistaken in Speed Limit; Donates Ten Dollars.

John Healy of Heppner was arrested here last Friday by Policeman Kocker for exceeding the speed limit. Healy turned a corner on Main street going thirty miles an hour and when Kocker called to him to stop he paid no attention. The number of his car was plainly visible and later the machine was found in the garage. When