

Hardware

Is all the name implies and nothing more. Some hardware is better than other. That depends.

We carry complete lines of Hardware in the best known and more widely advertised lines.

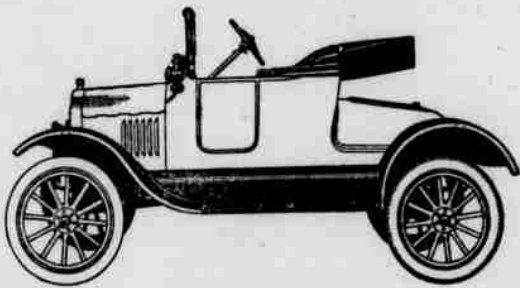
Vaughn & Sons
Hardware Dealers

Ford

THE UNIVERSAL CAR

In the scale of advancing business costs, Ford travel continues the same positive economy. City and country salesmen, manufacturers, merchants, professional men—every demand for motor car transportation is satisfied in the Ford car at about two cents a mile to operate and maintain. Over 1,750,000 Ford cars are making performance and profits every day. Runabout \$345, Touring Car \$360, Coupelet \$505, Town Car \$595, Sedan \$645—all f. o. b. Detroit. Place your order now.

WALTEIR WILLIAMS HDWE. CO.
J. O. RASMUS, Mgr.
Sales Room in Yeager Bldg., Main St.



I Can Sell Your Land Quickly

If you wish to sell, give me full particulars in first letter

W. D. NEWLON

Lexington, Oregon

Fred Ashbaugh was down from his Hardman ranch on Saturday. He will soon have the machinery installed and open up the saw mill on the Allen place at Toll Rock. The machinery has arrived at Heppner and Mr. Ashbaugh will arrange to take it to his mountain ranch just as soon as possible. There is a fine bunch of good saw timber on the Allen place and the starting of this new mill there will place on the market some very excellent lumber. Mr. Ashbaugh contemplates doing sawing only, and will not turn out any dressed lumber, at least for the present.

The Federated Church.
Sunday School at 9:45 a. m. We have classes for every age, 14 in all, and ranging from the "Tiny Tots" to gray-headed men and women, and for each the Word has a worth-while message. There is a warm welcome for you.
Theme of the morning sermon, "None Other Name."
There will be no preaching service in the evening.
Christian Endeavor 6:30. Topic, "Boy Dreamers as World Builders." Leader, Pearl LaTrace.
H. A. NOYES, Pastor.

MORROW CO. CREAMERY ELECTS OFFICERS

The stockholders of the Morrow County Creamery held their annual meeting at the office of Woodson & Sweek in this city on Saturday, April 21. At that time, new officers and board of directors were elected. A. M. Phelps was elected president and chairman of the board of directors. Other officers elected were John Bush, vice president and W. Claude Cox, secretary and treasurer.

The directors for the ensuing year are John Bush, A. M. Phelps, Hanson Hughes, W. G. McCarty and W. Claude Cox. Hereafter the board of directors will meet once each month.

The report read at the regular meeting shows the creamery to be in good condition. Plans were discussed for the future operation of the company's business.

SPENCER AKERS BUYS LAND NORTH OF IONE

Spencer Akers of this city, who a few weeks ago, sold his Heppner flat ranch to Wm. H. Padberg, has purchased 320 acres of land, commonly known as the Alhart land, north of Ione from the Vermont Loan & Trust Co. The price paid for the land has not been made public, but it is understood that it was held at \$8 per acre.

Mr. Akers will farm the land thoroughly and it is his intention to rent some land adjoining, probably a section, and farm on a fairly large scale. He has a man employed at the present time on his new ranch sowing the acreage to barley. Chas. Reid farmed the place the past two years.

RHEA CREEK TRANSACTION INVOLVES \$10,000

A deal made the past week in the transfer of real estate on Rhea creek involves ten thousand dollars. Wilson Bayless has sold his diversified farm to Glenn Hayes. The farm is considered one of the best of its kind in the county.

THE ARMY CUTWORM MAY INVADE OREGON

Specimens of the dreaded Western army cutworms were received this week from Western Washington by A. L. Lovett, entomologist of the O. A. C. Experiment Station. While he hopes that this is simply a sporadic out-break, growers throughout Eastern and Western Oregon are urged to keep a careful lookout for this serious pest. The caterpillar is in appearance like any ordinary cutworm caterpillar—a soft, mottled, grayish-brown caterpillar, about one inch in length at this time. They move in hordes and destroy all green vegetation in their pathway, and where present in sufficient numbers, can devastate great areas of the small grain, alfalfa and truck crops.

Natural barriers prove a check to their progress. Plowing a furrow at right angles to their course of travel and later dragging a small log up and down the furrow to prepare a dust mulch, will stop them. They will drop into the furrow and are unable to crawl up the sides. The standard poison bran mash is also effective, when broadcasted over the ground along their course of travel. Any suspected caterpillars found should be sent to the Experiment Station at Corvallis, for identification, so that it will be possible to act in time to prevent any serious losses from this pest.

GRANT COUNTY BOYS ENLIST IN THE ARMY

Seven stalwart young Grant county boys passed through Heppner the last of the week on their way to Portland to enlist in the United States Army. They were: Bard Crisman, Birt Lafon, Huston Lisy, W. A. Dinwiddie, E. B. Cahoe, and Cedric Scharrf.

The young men were brought over from Monument by Sam Cochran, who lives near that city.

Chas. Devin Gets Fine Flow of Water

One of Wilburn's well drills has just finished a good well for Chas. Devin on Dry Ridge securing a strong flow of water which came up 223 feet in the hole and could not be lowered. Mr. Devin has a fine modern home and is one of the most prosperous farmers of his section of the country. He has never been able to stock his farm to its full capacity before, owing to a lack of water, this new well will supply in abundance.—Condon Times.

NOTICE.

The Opening of the new Palace Hotel lobby and the Palace Billiard Parlors will be postponed and the date will be advertised later, for the reason that our improvements are unfinished.

PALACE HOTEL CO.,
By J. L. Wilkins.
PALACE BILLIARD PARLORS,
By M. L. Curran.

NOTE: REFER TO BULLETIN BY DATE & NUMBER.

TECHNICAL DEPARTMENT BULLETIN

DATE _____ NUMBER _____

TO ALL DEALERS:

For your information we wish to advise that in our experiments and tests here at the factory with our new Eight Cylinder car, we have been able to secure uniformly better results with Standard Oil Company's Zerolene motor lubricant than with any other which we have used.

Please understand, however, that we do not wish this to be construed as an attempt on our part to dictate the brand of oil which you should use, but merely to call your attention to the fact that this particular brand has given us better results than any others which we have tried, and are giving you this for your information.

Yours very truly,
THE PERLESS MOTOR CAR COMPANY

BECAUSE Zerolene is correctly refined from asphalt-base crude, it maintains its lubricating body and value at cylinder heat, thus forming a perfect piston seal, reducing friction, and enabling the motor to develop its maximum power.

Zerolene is the oil for your car.

For sale by dealers everywhere and at our Service Stations.

STANDARD OIL COMPANY
(California)

LIVESTOCK HIT BY THE LATE SEASON

Livestock conditions in the National Forest regions of Washington are good, with a fairly high lambing average, according to reports received by District Forester George H. Cecil, Portland, Oregon. In Oregon stock conditions are below normal in the National Forest regions. This is due to the unusually long feeding season. In many sections the hay is entirely used up.

In the Deschutes country, near the Fremont National Forest, the upper John Day country, and in Baker county, Oregon, will occur the severest losses on account of late season and hay shortage. Most cattle in Oregon and Washington have not through the winter in rather poor condition.

To meet the emergency which exists, the Supervisors of the National Forests in Oregon and Washington have been authorized to open them to livestock which is short of feed earlier than the usual date, whenever it can be done without material injury to the early grasses. The Forest Service will make every effort to aid the stockman in saving their animals from starvation.

Forest Service reports show that severe weather conditions are causing heavy losses of cattle and sheep in the northern Rocky Mountain region. Because of unusually deep snow, continued storms, and the late spring, the supply of feed in most of the region has been practically exhausted. Hay is now selling at twenty dollars to forty dollars a ton and it is almost impossible to get even at these prices.

The loss of sheep in Wyoming, Montana, Idaho, Utah and Nevada will, it is feared, be unusually heavy. Well posted stockmen estimate that it may reach 20 per cent. It is stated that the sheep are generally in poor condition and many of the bands which came through the winter without losses are now beginning to suffer. A light lamb and wool crop is anticipated for the whole Rocky Mountain region.

All indications are that the cattlemen have been equally hard hit. In parts of Idaho, Montana and Wyoming, unusually severe losses are in prospect. No reliable figures are obtainable from Northern Nevada and Utah, but all reports agree that the number of livestock will be greatly reduced in those sections also.

The fact that supplies of grain and hay have been almost exhausted and the spring ranges are generally covered with snow, leads experienced stockmen to fear that many more animals will die before the situation is relieved by warm weather. In some regions the snow is so deep that hay cannot be hauled to the starving stock except on hand drawn sleds.

Church of Christ.

Subject of morning sermon: "A Day of Good Tidings."
Evening subject: "Dives and Lazarus."
The time of the evening service is changed from 7:30 to 8 o'clock. The Endeavor service begins at 7.

LUMBER IS NOT HIGH

RECENT RELIABLE STATISTICS SHOW THAT NOW IS THE TIME TO BUILD. IF YOU HAVE BEEN LABORING UNDER THE IMPRESSION THAT LUMBER IS HIGH, WE INVITE YOU TO CAREFULLY STUDY THE FOLLOWING:

PERCENTAGE OF INCREASE SINCE 1914.

Copper	114%
Metals (26 grades)	106%
Wheat	94%
Beans	74%
Gasoline	67%
Corn	50%
Hogs	46%
Oats	22%
Lumber	-15 to 18%
Labor	-12 to 15%

If You Are Ever Going to Build, No Better Opportunity in Your Life Will Ever Come Than Right Now.

Take a look at the above statistics and you will immediately begin to realize why LABOR and LUMBER make up from 3-4 to 9-10 of the total cost of your building. Both are at a comparatively low level. Lumber right now is BELOW NORMAL.

Don't Be Fooled into Believing that Lumber is Either "Scarce" or "High."

It is neither! It never could be bought to better advantage than right now. Our guaranteed material saving plans are prepared by expert architects. We can fit your Ideal building to your pocket-book.

The Tum-A-Lum Method Does It!

The present LOW LEVEL cannot be maintained long. Exports are practically shut off now but as soon as the war ends, billions of feet will be demanded by every warring nation AT ONCE. The cost of building will naturally GO UP in the U. S. and will probably reach a HIGH point for years, while the reconstruction in Europe is taking place.

Don't Wait For the High Point!

Build now while it is possible to build cheaply, even if you have to sell when the high point comes.

This is The Year to Build, and the Earlier in the Year you Buy the More You Will Save.

Thousands of buyers have lost money by not buying in January or February. Get in now while the price is still low.

TUM-A-LUM LUMBER CO.

DON'T SAY "LUMBER"—SAY "TUM-A-LUMBER"

Piano Tuning and Repairing.

I wish to announce that hereafter I will make regular trips to Heppner and vicinity to tune and repair pianos and player pianos and remove marks on piano cases. I solicit your work and point to my former work in this

community and an experience of 27 years in the business as an assurance to you of the quality of service I can give to you. Rates reasonable.
HOWARD S. SOULE.
Leave orders Humphreys Drug Co. Reference Virginia Crawford, Pianist. C. Guy Wakefield, Piano Dealer. A 19-21.