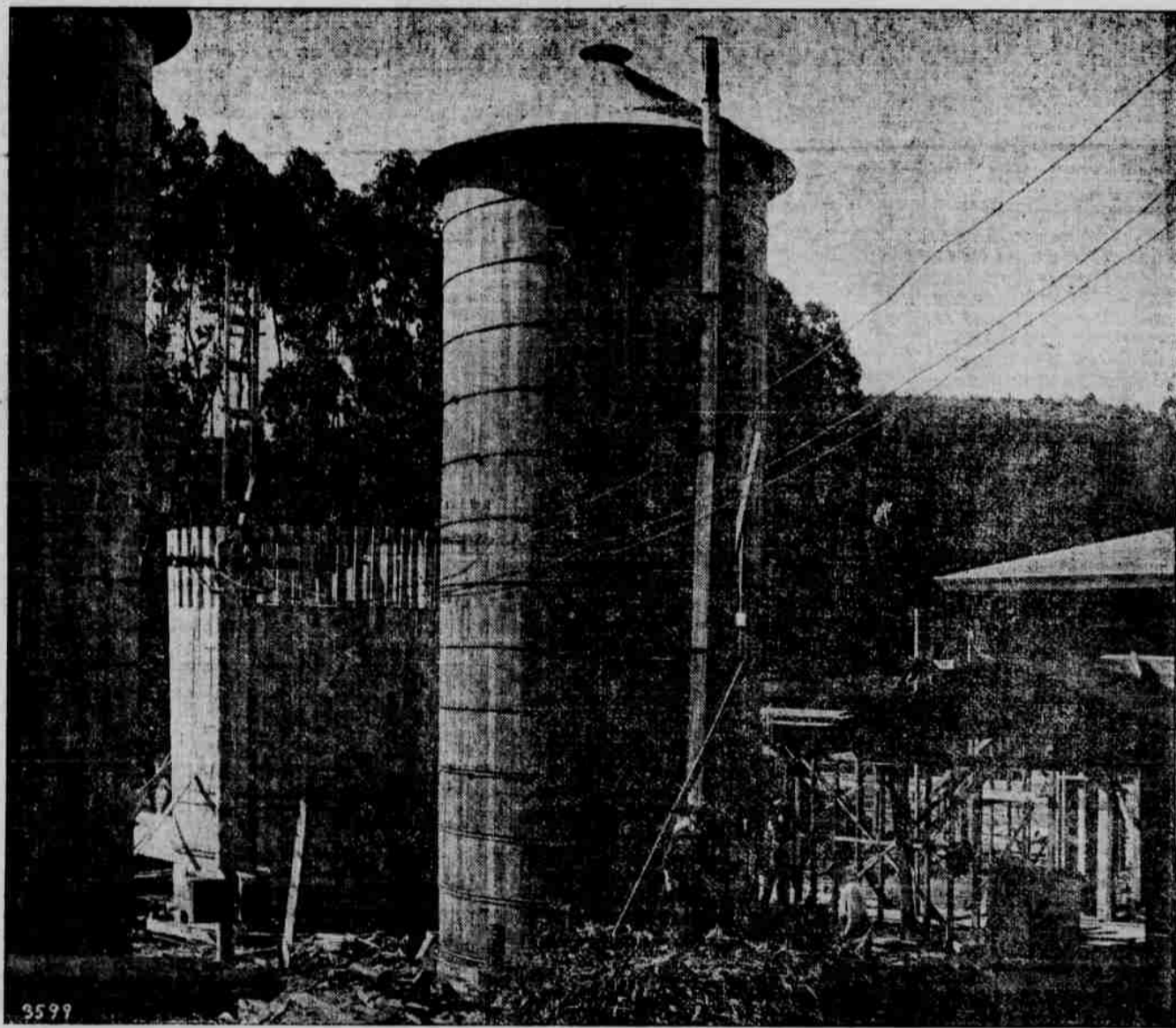


# THE GAZETTE-TIMES.

HEPPNER, OREGON

## Home and Farm Magazine Section

THURSDAY, DECEMBER 3, 1914.



Silos at the Panama-Pacific International Exposition.

**V**IEW of some of the big silos now finished and being filled with especially grown corn for the use of the exhibitors in the Live Stock Department at the Panama-Pacific International Exposition, which opens at San Francisco on February 20, 1915. The silos, six in number, are but a detail of the preparations being made for the maintenance of view herds during the entire course of the exposition, the first time that this has been attempted at any exposition. The buildings of the Live Stock Department cover 65 acres and were erected at a cost of \$125,000. Four hundred and fifty thousand dollars is offered in prizes and purses for the live stock exhibits and the harness races on the mile track adjoining the Live Stock Department.