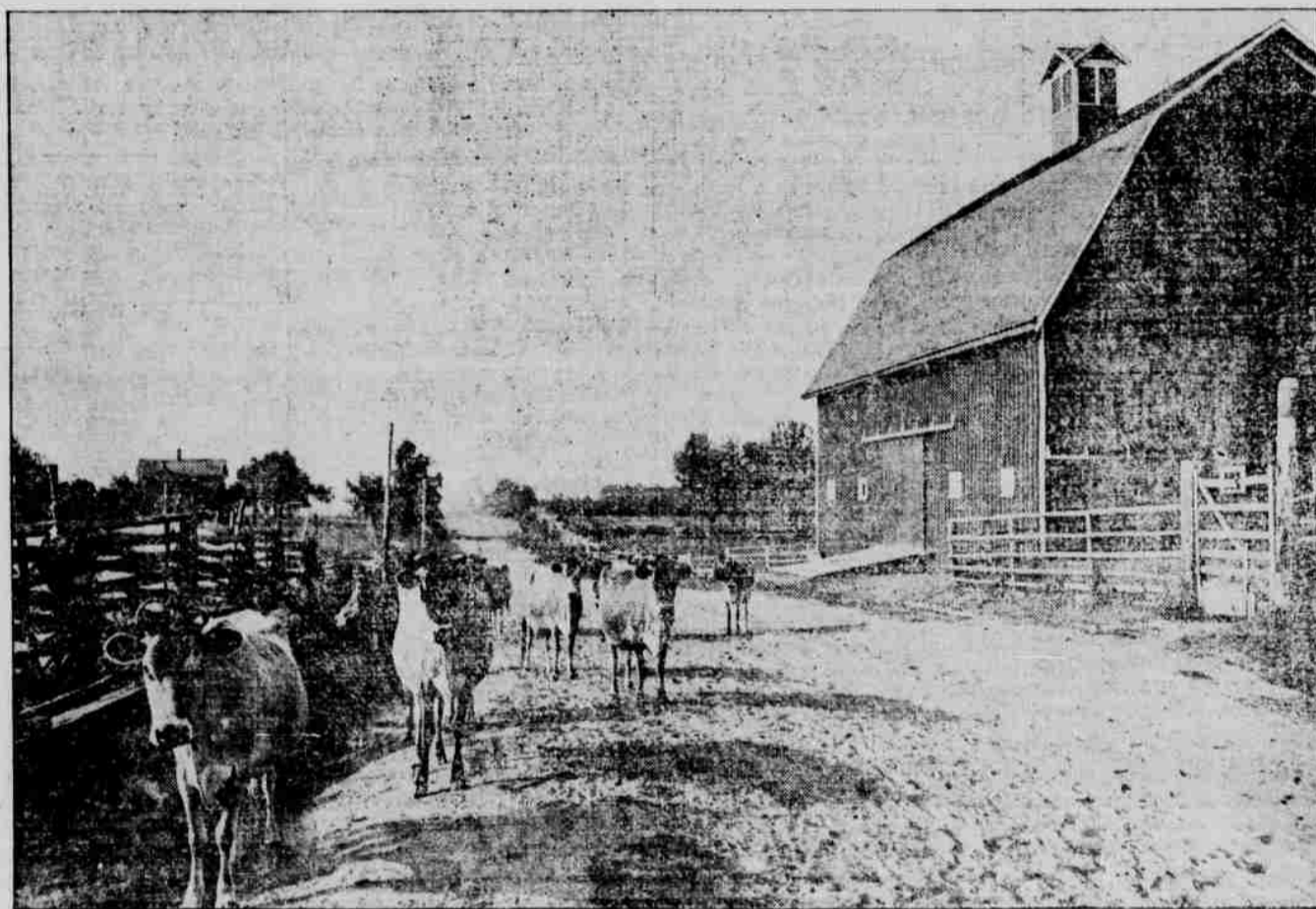


# THE GAZETTE-TIMES.

HEPPNER, OREGON

## Home and Farm Magazine Section

THURSDAY, OCTOBER 15, 1914.



Typical Northwest County Road.

**T**HE NORTHWEST is the home of fertile farms and healthy cattle. Pasture lands are nowhere greener. Nowhere does the soil contain greater potentialities.

The traveler through the farm lands in the states of New York, Pennsylvania and Ohio, for example, may find prosperous farms, but the land is old. It has stood the burden of providing for generations, and unless given the reviving influence of nitrates or various fertilizers, bears smaller crops every year. In California irrigation is a great problem for many of the farm lands, without which the dryness of the land prohibits extensive cultivation.

But in the Northwest the land is new and its fertility is as yet scarcely touched. Irrigation is not the problem that it is in the South for the welcome rains of winter are plentiful and the drouths are few and infrequent. Why should this land not prosper?

The above illustration, taken along a typical country road in the Northwest, shows several healthy appearing Jersey cows off for pasture.