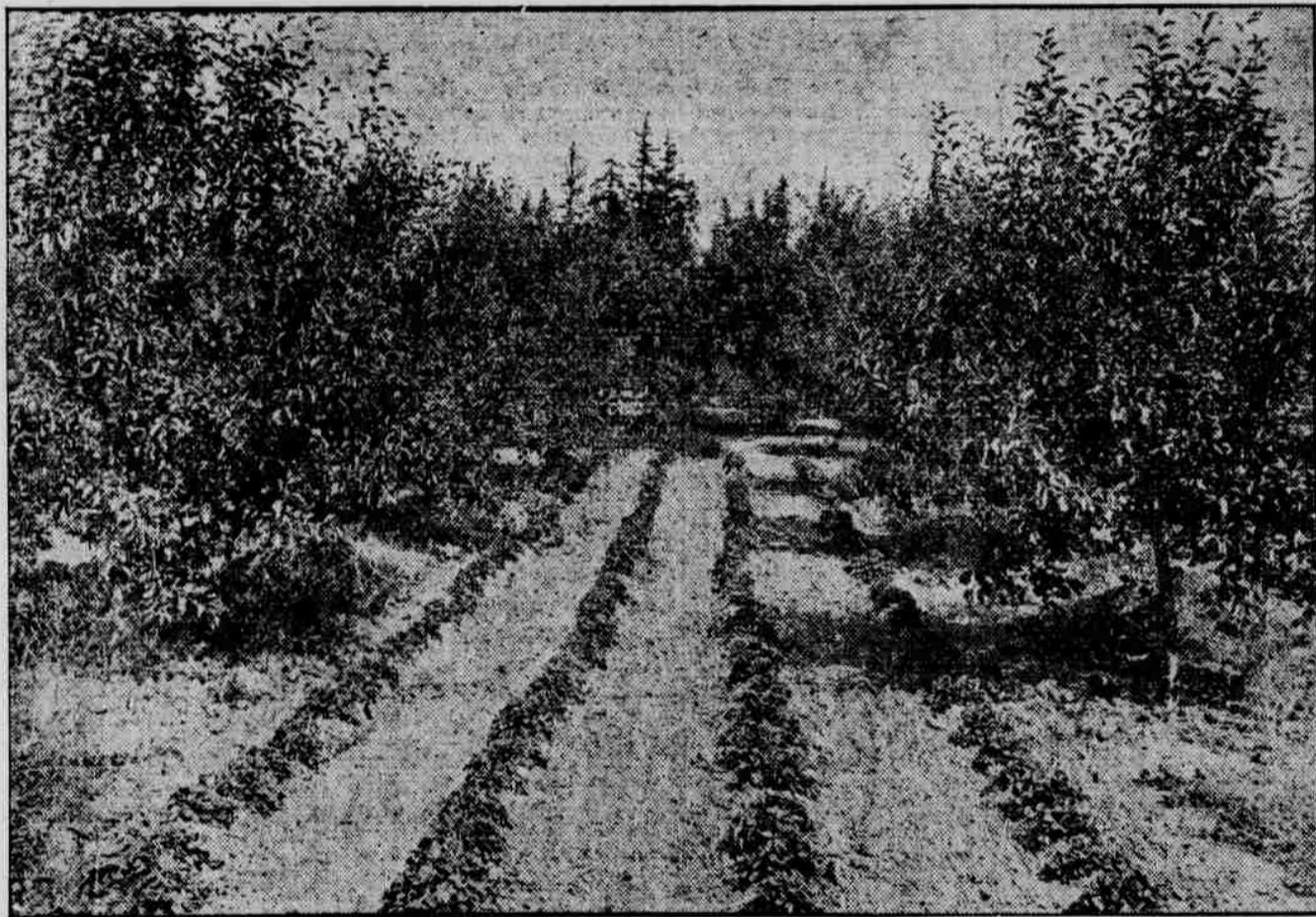


THE GAZETTE-TIMES.

HEPPNER, OREGON

Home and Farm Magazine Section

THURSDAY, OCTOBER 8, 1914.



Intensive Cultivation in the Northwest.

Land is valuable in the Northwest and many successful ranchers grow wealthy through utilizing their land to the greatest degree, from a steady rotation of crops to practicable intensive cultivation. In the above picture is shown an orchard of Gano apples with strawberries growing between the rows of trees. The photograph was taken near Goldendale, Washington.

While this is not intensive cultivation in a fine degree it is a method of utilizing most of the land. It appears that the trees might have been planted closer together and still allow for four rows of strawberries between the lines. It is possible this same land might be made to produce from a third to a fourth more. There is such a thing, of course, as pushing intensive cultivation too far, robbing the land of its fertility. In general the foreigner that comes to this country knows more about intensive cultivation than the average American who looks at the land in acres where the former figures in yards. Many a small plot of ground on Italian hills has been made to produce more, particularly in the way of small vegetables, than the average Western ranch devoted to similar crops. A study of intensive cultivation may prove of value to any farmer, for it is seldom the knowledge may not be put to practical use.