

900 DROPS

CASTORIA

ALCOHOL 3 PER CENT.
Vegetable Preparation for Assimilating the Food and Regulating the Stomach and Bowels of

INFANTS & CHILDREN

Promotes Digestion, Cheerfulness and Rest. Contains neither Opium, Morphine nor Mineral. **NOT NARCOTIC.**

Recipe of Old Dr. SAMUEL PITCHER

Phlegm Sore -
Whooping Cough -
Diarrhoea Sore -
Stomach Sore -
Painful Sore -
Hemorrhoids -
Hemorrhoids -
Hemorrhoids -

Perfect Remedy for Constipation, Sour Stomach, Diarrhoea, Worms, Convulsions, Feverishness and LOSS OF SLEEP.

Fac-Simile Signature of
Chas. H. Fletcher
NEW YORK.

At 6 months old
35 DROPS - 35 CENTS

Guaranteed under the Food and Drug Act.

Exact Copy of Wrapper.

CASTORIA
For Infants and Children.

The Kind You Have Always Bought Bears the Signature of

Chas. H. Fletcher

In Use For Over Thirty Years

CASTORIA

THE CENTAUR COMPANY, NEW YORK CITY.

CARE NEEDED IN FEEDING ENSILAGE.

A great many silos are being built this summer, and the owners will have their first experience feeding silage next winter. There is no denying the fact that silage has a high feeding value, but those who are inexperienced should use caution in feeding if they would get best results.

When the feeding of silage is begun it must be given in small quantities or the cows and calves will scour and get off feed. If the feeding is begun while there is pasturage and pumpkin or other green feeds are in use the danger of scours will not be so great, and almost a full ration may be given at the start.

Spilled silage is something that must never be fed. When feeding begins, as soon as the silo is filled, there will be none spoiled, but where several weeks intervene before feeding begins there will be a considerable portion on top that must be thrown away. Spoiled silage makes a very good mulch for use in the garden.

The amount of silage to be given depends to a great extent upon the cow, as some animals require more

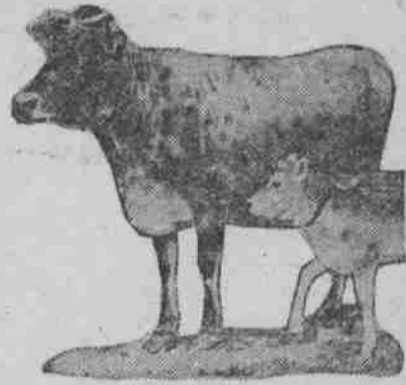


Photo by American Press Association.

At his country estate, Elkins Park, Pa., Peter A. B. Widener, the well known Philadelphia capitalist, maintains an establishment that is one of the finest in America. The place is visited frequently by friends of Mr. Widener who desire to set up country places and want to get pointers from his methods of doing things. Besides greenhouses and flowerbeds that are among the marvels of beauty, Mr. Widener maintains a dairy that is a model. He has some fine stock, which is his pride. One of his good cows, a Jersey named Oxford's Bella, is shown here with her calf.

than others, and upon what other feed they are getting. I would consider forty pounds per day about the proper amount.

A bushel basket makes a very convenient measure, as it holds enough for one feed. Observe the cows, and if any do not clean their portion up give a smaller amount at the next feeding. Never allow any silage to remain in the mangers, as it will spoil quickly and taint the milk.

I do not believe that silage can be very highly recommended as a horse feed. It will do for colts and idle horses, but will make the working horses soft.

Silage may be safely recommended as a feed for sheep when given in moderation. When fed in any great amount it causes a loosening of the bowels and has other bad effects. Pea or clover silage is more valuable than corn silage as a feed for sheep.

The feeder must not lose sight of the fact that silage in itself is not a balanced ration by any means. Always feed bran, oilmeal, gluten or other ration rich in protein in connection with the silage. Where a good legume is fed also a smaller quantity of the mill stuff should be given.—Farm Progress.

Jim Shiftless and His Pig.
Uncle Cornpatch, as quoted by the Progressive Farmer, says his neighbor, Jim Shiftless, has a pigpen "about eight foot square, with an old door for a roof, a little trough in one end and a small that reaches half a mile down the field. Jim's one pig is in this pen, and he must enjoy life in hot days."

"Of course hogs is hogs, an' so is some men, but I don't see how any man can expect to git any profit out of a hog kept in a little pen all summer, an' I don't see how he can think little enough of the hog an' the rest of the neighborhood to keep a pen so nasty that a man don't like to go close to it."

"I keep my hogs in the pasture this hot weather, where there is plenty of grass an' pea vines an' shade an' water, an' then I go out an' rub 'em in the side with the toe of my boot, an' they grunt an' git fat, an' we all enjoy it together. I don't think I'll ever sell Jim Shiftless another pig."

Beef Cows and Dairy Animals.
A beef cow is square and blocky, while the dairy cow is wedge shaped and angular. The one stores nutriment in her body; the other gives it off. The one is a miser and stores all that she gets into her system; the other is a philanthropist and gives away all that comes into her possession.—American Agriculturist.

Argument For the Silo.
The fact that one acre of silage will feed three cows for six months, while it will take six acres of the old fashioned corn fodder to feed the same number that long, ought to be convincing argument in favor of the silo.

Fine For the Cow.
The best crops that can be raised for the dairy cow are alfalfa and corn silage, and both these are great drought resistors.

"HORSE SENSE."

A few "snips" with the pliers removes rough corners of the hoof, which if left on might result in lameness and possibly the loss of the animal.

At the Canada experimental farms, in a horse feeding test it was found that corn and bran five to two, or barley and bran five to two, could be substituted for oats and bran in the same proportions, although both the corn and barley were less palatable than the oat ration.

When the horses rub their tails it is sometimes a sign of worms. To effect a remedy feed equal parts of salt and wood ashes every day for a week.

Experiments have proved that it is not profitable at the ordinary cost of doing it to grind grain for horses doing ordinary work. It might pay in the case of very hard worked animals.

Carrots must be fed sparingly to working horses. Cut them in slices. They are a laxative and affect the kidneys also.

HANDLING A VICIOUS BULL.

Use of Double Loop Helps to Teach Him Who's the Boss.

We suppose every one has a recipe for the treatment of troublesome bulls. This advice on the subject is taken from Hord's Dairyman: In the first place, bulls get unruly largely because of the superabundant energy that is wrapped up in them. They ought to be made to work every day on a tread power or in some other way and get tired. That will do more to repress their "masculine rage" than anything we know of.

Second, if a young bull gets the notion in his head that he is boss, take him out on the meadow or where the snow is deep enough to make a fair cushion and throw him with a double loop a few times. That will put more sense of his inferiority in the hands of man into his thick head than anything we ever tried.

The double loop is made in the following manner: Take a half inch rope, say, twenty feet long. Pass one end through the nose ring, leaving about six feet in front, thence up between the horns. Then pass the rope around the body just back of the fore legs and make a half hitch at the backbone; thence back to the hips, making another turn around the body just in front of the hind legs, with a half hitch at the backbone, and carry out the rope over the tail six or eight feet in the rear. Let two men take hold of the end in front and two more on the rope in the rear and give a stout pull together, when down goes Mr. Bull as if he was shot. Hold him down by the head a few moments and let him up. Likely enough he will make a lunge at the men in front, but another slow pull brings him to his side with a bang.

Throw him two or three times in this way, and it will take the conceit out of him wonderfully. You have not struck him nor hurt him, nor is his anger aroused. He is simply nonplused and completely beat at your power over him. We have known of several very cantankerous bulls that were kept quite decent by an occasional dose of the double loop.

WHEN AN ANIMAL CHOKES.

Measures to Be Taken to Meet a Common Emergency.

The following is taken from Farm and Fireside:

"Few emergencies which arise on the farm are more easily dealt with than choking. In case of this kind we have never known the white of an egg, when poured down the sufferer's throat, to fail to give relief."

"To administer the egg quickly and surely it should be broken into a wide mouthed bottle. When such a bottle is not quickly available, however, an ordinary bottle may be used by using a funnel to get the egg into it, and where a funnel is not a hand one can be made by rolling a piece of paper into the desired shape."

"When everything is ready the animal's head should be raised as high as possible, the bottle thrust far back in the throat and the contents emptied. The egg will immediately pass down and make the throat passage and the offending obstacle so smooth that it will pass on into the stomach."

Balance Between Plants and Animals.

As a rule, there is less chance for failure and less financial discomfort when crops are short on the farm where there is a nice balance between plants and animals. Those who make it a point to raise plenty of feed and keep as many animals as will consume the feeds economically are usually more prosperous than those who keep too many animals and buy feed for them or those who depend solely upon crops.—Farm and Ranch.

The Sort of Sows to Keep.

Pig flesh is more rapidly and cheaply made than any form of pork, hence feed the sow liberally and stimulate deep milking qualities. Discard any sow that is a poor milker, for poorly nourished pigs will be poor pigs in spite of other good environments.—Farm Journal.

Oxen on the Farm.

There is in many parts of the country a reversion to the use of oxen. Well mated and properly broken, they make a reliable farm team and can be turned off at a good profit when the outdoor work is over.

NATURE TELLS YOU

As Many a Heppner Reader Knows Too Well.

When the kidneys are weak, Nature tells you about it. The urine is nature's index.

Infrequent or too frequent passage. Other disorders suggest kidney ills. Doan's Kidney Pills are for disordered kidneys.

People in this vicinity testify to their worth.

Mrs. C. Boles, 1100 E. Webb St., Pendleton, Oregon, says: "I had great benefit from Doan's Kidney Pills when suffering from a bad back and disordered kidneys. Another of the family has used Doan's Kidney Pills off and on for years for kidney weakness and has had the best of results. Doan's Kidney Pills deserve our endorsement and we give it willingly."

For sale by all dealers. Price 50 cents. Foster-Milburn Co., Buffalo, New York, sole agents for the United States. Remember the name—Doan's—and take no other.

If You want your house moved see J. H. Cox.

105 Acres

Situated on the Long Tom—a tributary of the Willamette River—running through one of the best sections of Benton County.

15 Acres of Alfalfa

the rest is scattering timber, easily cleared, and is all good bottom land. \$60 per acre and very reasonable at that.

24 Acres Good Plow Land

at \$80 per acre.

All of the above land is especially adapted to poultry raising and small fruits, especially loganberries. Directly on electric line and within 14 miles of Corvallis, the seat of the Oregon Agricultural college.

For further particulars, address
L. C. ATHERTON,
753 Brazee St.,
PORTLAND, OREGON.

OREGON AGRICULTURAL COLLEGE

BEGINS its forty-fifth school year SEPTEMBER 19, 1913.

DEGREE COURSES in many phases of AGRICULTURE, ENGINEERING, HOME ECONOMICS, MINING, FORESTRY, COMMERCE, PHARMACY.

TWO-YEAR COURSES in AGRICULTURE, HOME ECONOMICS, MECHANIC ARTS, FORESTRY, COMMERCE, PHARMACY.

TEACHER'S COURSES in manual training, agriculture, domestic science and art.

MUSIC, including piano, string, band instruments and voice culture.

A BEAUTIFUL BOOKLET entitled "THE ENRICHMENT OF RURAL LIFE" and a CATALOGUE will be mailed free on application.

Address H. M. TENNANT, Registrar, (tw-749 to 9-9) Corvallis, Oregon.

PEOPLE
who do not know
Should know
that
FRIEDRICH
"THE TAILOR"

turns out the best fitting and best made clothes
in Heppner

Licensed Embalmer Lady Assistant
J. L. YEAGER
FUNERAL DIRECTOR
Phone Residence. Heppner, Oregon

IS IT PRINTING? See The G.-T. About It

OUR FIRST TRUST COMPANY.

It, Like Our First Bank, Was Established in Pennsylvania.

It was in Italy that the art of banking as known in our times was first introduced. The earliest bank established in modern Europe was that of Venice, which was founded in 1157. It originated in a loan which the state raised during the great war of the republic with the Greek empire, 1150-1171.

The bank of Genoa was founded about 150 years after the bank of Venice. Macaulay in his "History of England" has a partial description of the operations of this bank, which existed from 1320 to 1798.

Previous to the year 1694 there were only four considerable banks in Europe, but on the 27th of July of that year a charter was granted by William and Mary for establishing the Bank of England, which for opulence and extent of circulation has for many years been the greatest in the world.

The first bank established in the United States is known in financial history as the Pennsylvania bank. It began operating on July 17, 1780, and since that time Pennsylvania has figured conspicuously in the banking affairs of the country. Besides being the home of the first bank in the United States, Pennsylvania has the distinction of having the first bank incorporated under the national banking act. Charter No. 1 was given to the First National bank of Philadelphia. That state is also the home of the first trust company. In 1809 the Pennsylvania company, a corporation to write insurance on lives and grant annuities, was organized in Philadelphia. In 1836 this institution was authorized to execute trusts. Not until 1853, however, was it empowered to act as executor and administrator.—W. C. Jenkins in National Magazine.

A Housewife in the Making.

Miss Emery had given little Tim a simple problem in addition that he failed to work out. "Numbers are dry," she reasoned with herself and determined to make the lesson more interesting.

"Suppose," she began engagingly, "your mamma sent you to the store to buy three pounds of lamb, two pounds of potatoes, half a pound each of carrots and turnips and one pound of tomatoes. What would you have then?"

Tim shook his head, but Marybell, only a year older, raised an eager hand.

"Well, Marybell?" said the teacher, with a sorrowful glance at little Tim.

"Stew!" said Marybell sweetly.—Youth's Companion.

Racing at Ascot.

Racing at Ascot dates back a great number of years, and it is recorded that Queen Anne was the first royal personage to patronize the fixture, in 1711. The first and second Georges were not great patrons of the turf, but they bred race horses on a large scale in order to encourage their subjects, and George III. gave a plate of 100 guineas to be competed for. Ever since those times the great annual festival on the famous Berkshire heath has met with royal favor.

Astonishing Accuracy!

It is a distinct pleasure to sell a watch that will literally astonish its owner by its wonderful accuracy—a watch that will stay accurate year after year through all kinds of service. That's why we offer you

The **Hamilton Watch**
"The Railroad Timekeeper of America"

This watch is a marvel of accuracy, thinness and beauty. Made in all sizes, for men and women. Also Hamilton movements sold separately to fit almost any case.

Oscar Borg
Jeweler and Optometrist

NORTH BEACH
NOW IN FULL BLAST

Why not plan your Summer Vacation at this wonderful resort, reached by rail to Portland via

A TRIP DOWN THE COLUMBIA

A REST BY THE OCEAN

AND

Steamer Trip down the Columbia via O. W. R. & N. Steamers "T. J. Potter" or "Hassalo", daily except Sunday. —Surf Bathing, Fishing—Tents and cottages for rent—Good hotel accommodations. Excellent restaurant service on boats. INFORMATION FURNISHED ON APPLICATION TO

J. B. HUDDLESTON,
Agent.



Scrubbing Unnecessary

Enamel your walls and woodwork and secure a finish that is hard and smooth, non-absorbent and sanitary. Enamelled surfaces do not require scrubbing. An occasional wiping with a damp cloth will keep them looking clean and fresh.

ACME QUALITY ENAMELS (NEAL'S)

are easily applied. They cost no more than ordinary paint and save you time, trouble and worry.

Our "Home Decorating" booklet tells you how you can "do it yourself" at trifling cost.

Ask for a free copy.

Case Furniture Company,
HEPPNER, OREGON