

The First National Bank Of Heppner

CAPITAL STOCK, - - - \$100,000.00
TOTAL RESOURCES, - - - 804,442.45

We offer the services of a well-equipped bank with sufficient capital and resources to care for the needs of our territory

New Accounts Invited
Four per cent, paid on Savings Accounts
Exchange bought and sold
We issue exchange on all important Foreign Cities

ESTABLISHED IN 1887

PLAN FOR RURAL BANKING SYSTEM

Senate Measure Provides
Scheme to Aid Farmers.
Loans for Fifty Years.

A national rural banking system was proposed in a bill introduced the past week in the United States senate by Senator Fletcher, chairman of the American commission on rural credits, appointed by the president.

The bill proposes a system of local national rural banks owned and operated by farmers; a state national rural bank in each state, to be owned and controlled by the local banks as stockholders, and a national bank of the United States, to be located in Washington, to be owned entirely by the state rural banks.

To supervise the proposed chain of banks there would be created in the treasury department a division of rural banking under the direction of a "rural banking board," to consist of the secretaries of the treasury, agriculture and labor. The division would be under the immediate jurisdiction of a "director of rural banking" to be appointed by the president.

The main purpose of the banks would be to furnish funds to farmers on long term farm bonds or notes, secured by liens on farms at not exceeding 60 per cent of their value. Loans would be secured first by a local bank, then by a state bank and last by the national bank of the United States, and they would run from 20 to 50 years. The national rural bank is designed to have a capital and surplus exceeding \$100,000,000, while the stock of each local bank would be limited to \$2,000,000.

Senator Fletcher, speaking in the senate, urged the immediate consideration of the measure by the banking committee and its passage at the special session of congress; he expressed approval of the administration currency bill as a commercial banking bill but said it would not meet the needs of the agricultural communities, because of the necessity of long-term loans.

"It is obvious," said Senator Fletcher, "that the only method of furnishing capital for requirements of the farmer is the creation of a long-term first-mortgage bond, secured on his land, which bond shall contain a sinking fund provision so that an amount shall be set aside each year to pay off the bond when it matures. The farmers' loans should run from 20 to 50 years. No bank can loan money for such length of time. The money must be borrowed from the investing public. Here is where a special system of banks is needed, which will be authorized to use their credit in guaranteeing such bonds under restrictions which will reduce the risk of such guarantee to a minimum."

The proposed federal reserve system, the senator said, did not offer much relief, and the provisions of his measure, he maintained, though not perfect, would meet the requirements.

Stanfield has begun to ship its peach crop. At the present from 90 to 150 boxes are shipped daily mostly of the Early Crawford variety. A little later, when the Elbertas are ready for shipment, it is expected they will go out in car load lots.

The close fisted miser who is afraid to invest a dollar in boosting his own town should remember that shrouds have no pockets.

A professional pugilist has given up a situation in St. Louis teaching society women how to box; the pugilistic instructor is credited with saying that the shifting waist line, from Empress effects to the Bulgarian waist, was entirely too much to remember when giving lessons.

An experiment in the long-distance shipment of perishable fruit is about to be tried within a few days. An entire carload of peaches is to be dispatched to Europe from the Yakima country, and in this shipment only the finest selected Elbertas will be used. While the regulation boxes will be used, the layers of fruit will be separated by a layer of wood fibre as a protection against rough handling and possible damage. If this trial shipment proves a success, it is probable that an extensive business in peaches will be developed by Pacific Northwest fruit exchanges.

We are Headquarters for
HARVEST SUPPLIES
Thomson Bros.

BEST MEALS IN TOWN EVERYTHING FIRST CLASS

Elkhorn Restaurant

MEALS ALL HOURS.

Fresh Oysters all the Time Fish Every Day

Can supply the trade with meats and fish—the choicest in the market.
Call outside meal hours.

**OUR HARDWARE
IS THE BEST THAT IS
MADE. OUR STOCK
IS COMPLETE**



THERE'LL BE NO GUESS WORK WHEN YOU BUY YOUR HARDWARE FROM US.

WE KNOW WHICH BRANDS WILL STAND THE HARD WEAR.

WHEN YOU NEED ANYTHING IN HARDWARE, FROM A CARPET TACK UP, COME TO US. YOU'LL FIND IT IL OUR STORE.

WE DO BUSINESS ON THE SQUARE.

"DIAMOND EDGE" TOOLS ARE THE STANDARD OF THE WORLD. EVERYONE GUARANTEED. YOU WILL MAKE NO MISTAKE WHEN YOU BUY THE "DIAMOND EDGE" BRAND.

COME AND SEE US.

Gilliam & Bisbee

The forestry service experts agricultural department, in making a study of grazing lands in the national reserves have discovered 125 different varieties of new species of plants which are now being studied and classified by the botanists connected with the department. Every acre of national forest reserve land is being investigated as to which kind of stock is best adapted for that particular reserve, in that way the discovery was made. In some reserves that apparently have a luxuriant growth of forage plant stock will not eat the growth and the land is being put to no use. Government maps are being prepared showing what kind of stock is adapted to different sections of each reserve.

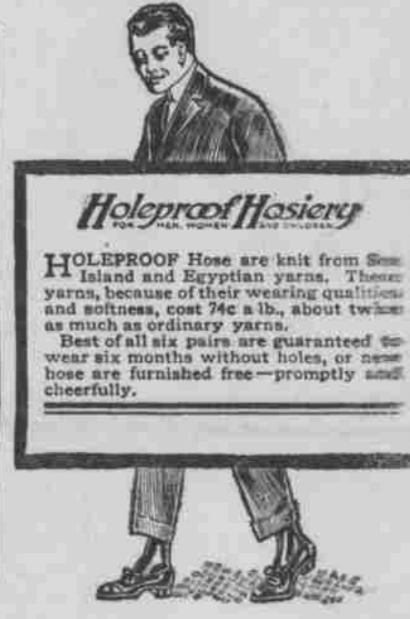
Hundreds of acres of land that will produce between 50 and 60 bushels of wheat to the acre is the encouraging status in the grain situation in the Grande Ronde valley. Charles Playle, an Alice rancher, is the first to cut and thresh grain this year and his crop is yielding 54 bushels to the acre. There are large fields that loom up in this vicinity equally as well and some large fields will run better than that, it is said. Harvest is on full blast this week and a yield of 1,500,000 bushels in this valley is indicated. —La Grande Cor. E. O.

This is to remind the reader that the fall fair season is not far off and he should be making preparations to enjoy one or more of these annual festivities to the very fullest extent.

"Wear Holeproof Hose and End the Mend"



Holeproof Hosiery
NO DARNING! Think what a blessing that means to you.
Because six pairs of Holeproof Hosiery are GUARANTEED against holes for six months or new hose are furnished FREE—promptly and cheerfully.
And these soft, snug-fitting hose cost no more than ordinary hosiery!



Holeproof Hosiery
HOLEPROOF Hose are knit from Sea Island and Egyptian yarns. These yarns, because of their wearing qualities and softness, cost 74c a lb., about twice as much as ordinary yarns.
Best of all six pairs are guaranteed to wear six months without holes, or new hose are furnished free—promptly and cheerfully.

We are carrying several of the leading brands in wearing apparel and foremost among these is

**HOLEPROOF
HOSIERY**

If you want the BEST in Footwear, call on
SAM HUGHES

RED FRONT

Livery & Feed
Stables

WILLIS STEWART, Prop.

First Class Livery Rigs

kept constantly on hand and can be furnished on short notice to parties wishing to drive into the interior. First class

Hacks and Buggies

Call around and see us.
We cater to the : : :

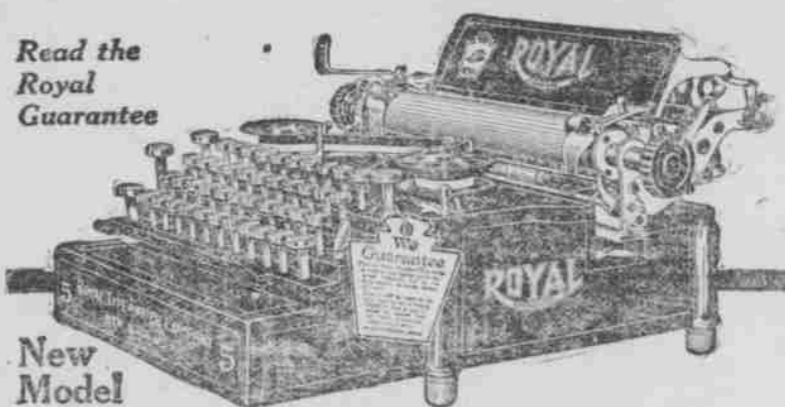
Commercial Travelers and Camping Parties

and can furnish rigs and driver on short notice.

HEPPNER, ORE.

NOTICE to all Fruit Growers and Dealers—No scaly or wormy fruit will be permitted in any market in Morrow county.
HARRY CUMMINGS,
Fruit Inspector of Morrow County
M-620m.

Read the
Royal
Guarantee



New
Model
5

ROYAL

With Two-Color Ribbon Tabulator Back-Spacer
Hinged Paper Fingers Tilting Paper Table

All the final touches of typewriter improvement are found at their best in the new Model 5 Royal, including several features found on no other machine.

Not the least of the many Royal features are its SIMPLICITY and DURABILITY. We have yet to learn of a Royal that has worn out in reasonable service.

The Royal is the machine of ECONOMY—not in the first cost alone, but also in the money it saves through years of perfect operation and practically *repairs-free* service. Read the Royal Guarantee; that's the basis upon which we want you to consider the Royal.



Get "The Royal Book"—also Free Demonstration

We want to show Royal features and Royal superiority in your own collection. It's a money-saver for any typewriter requirements however exacting.

\$75 same as for Model 1 with Tabulator. No extras.

Vawter Crawford

Heppner AGENT Oregon