

HALL

FOR GOVERNOR

A vote for Senator Charles Hall, of Marshfield Coos Bay, Oregon, is a direct vote for

Lower Taxes

If elected, Charles Hall will put into operation the Illinois System, namely, 10 commissions to run the State's Government, instead of the 70 commissions now functioning

He Stands for a

Clean American Business Administration

—Paid Advertisement—

THE HEPPNER HERALD ONLY \$2.00 A YEAR

Rolled Barley

I am prepared to furnish the finest quality Rolled Barley at fair and honest prices.

I also handle a complete line of gasoline Kerosine and Lubricating Oils. Satisfaction to customers is my motto.

Andrew Byers

PHONE

MAIN 733

SENATOR THOS. F.

RYAN

FOR STATE

TREASURER

What others say:

With Judge Ryan as state treasurer the people would be assured that the affairs of the office would be administered honestly and economically, that every dollar would be protected and that the disgrace put upon the state by Mr. Hoff would be wiped out. Mr. Ryan's record is absolutely clean.—PORTLAND TELEGRAM

Neither investor, nor guardian of public funds, nor an economist nor an administrator has Mr. Hoff earned reelection. His opponent, Thomas F. Ryan, of Oregon City, was for eight years assistant state treasurer and his qualifications for office seem superior to those of Mr. Hoff's.—THE CAPITAL JOURNAL, Salem

Dear Mr. Ryan:

"The result of my investigation of the office of State Treasurer is so eminently satisfactory that I wish to express my appreciation of finding an office where such a magnitude of business is transacted, conducted in the manner you are now and have been handling the office of Treasurer of the State of Oregon for the time you have acted as deputy. No man I know of in Oregon is better fitted to fill the position of Treasurer than yourself and I believe the voters will show their faith in you by electing you to the position."—R. E. PINNEY, Auditor and Adjuster of Official Bonds of State Treasurer

Competence in the office of State Treasurer is too grave a matter to be set aside in the interests of party or class. The Oregonian believes strongly that Mr. Hoff, whatever his other attributes may be, is not sufficiently versed in business matters to be continued in his present trust and that Mr. Ryan should be nominated.—THE OREGONIAN

Judge Thomas F. Ryan and O. P. Hoff, present state treasurer, are the two candidates for the Republican nomination to this office, and Hoff's administration is the principal issue. Ryan is making the race on his record as assistant state treasurer under former State Treasurer Thomas B. Kay, and a platform of constructive policies. Hoff's administration was subjected to a special grand jury investigation in the spring of 1920, resulting in the jury severely condemning his policy of purchasing bonds from Morris Brothers with state funds at stuffed premium prices. It enabled the bonding firm to realize nearly \$100,000 in excess profits.—PORTLAND TELEGRAM

A sum of \$150,000 of state funds is on deposit with the State Bank that closed its doors today. The State Bank of Portland is carrying larger amount of state funds on deposit than any other bank in the city. The state treasurer has a son employed in this institution. Let us retire Mr. Hoff and have a thorough investigation of this important office in all matters, as well as the work connected with investments made of trust funds.—CHAS. COOPEY, Secretary Oregon Scenic Association.

(Paid Adv. Ryan for Treasurer Club. Hal E. Ross, Secy., Oregon City, Oregon.)

HER BEST-LOVED FROCK BELONGS TO AFTERNOON



ALWAYS a volume could be written about some frocks—as about hats. The story is never all told until the season is over and gone—and before that time arrives, fashion has underway a sequel to follow. The best-loved of gowns is that one which makes a success of its wearer's afternoons. There is a long list of fabrics at hand to choose from including several crepe weaves, duvetyne velvet, satin, taffeta and fine wools, but the accent just now is to be placed on crepe and velvet. The slim silhouette remains the favorite, with variations that take in tunics, straight line and bloused models, having long waistlines. The exception to the rule of the slim silhouette appears in those frocks with a quaint flavor of days gone by, that are made with tight bodices and full skirts, or in others made on the lines of the handsome frock pictured. In this model the designer has made an over-garment, innocent of waist line and flaring in the skirt portion where panels are introduced at each side. He has pinned his faith to rich embroidery of silk and metal threads, placing it in borders and almost covering the front of the dress with it, and we can imagine the effect with duvetyne in a dark color as the foundation.

There are many points in the autumn modes that give designers of afternoon frocks advantages. There is the featuring of sleeves, the uneven hem line, figured and plain crepes, beads, braids, fringes and embroidery all yearning to look their best on the frocks that must bear many comparisons.

Julia Bottomley
COPYRIGHT BY WESTERN NEWSPAPER UNION.

Measuring the Moon. Compared with the earth, the moon is a tiny body, with a diameter of 2,100 miles. In the great circle of the Pacific, from which, according to an old idea, it was born, the moon would make a solitary island.

Wild Indians in South America. There are not today in North America any wild tribes of Indians. In parts of South America, notably the forest regions of the Amazon, there are tribes of Indians which have not yet reached any degree of civilization.

MRS. HERBERT M. HARRIMAN



Through her marriage to Herbert M. Harriman, Sally Hunter becomes related to the Vanderbilt and Havemeyer families. The daughter of poor parents, she will be mistress of the home of one of the leading capitalists and bankers of the community. She is shown here in the Red Cross uniform which she wore as a war nurse. Born in Belfast, she came to this country when sixteen years old. Mr. Harriman is the son of the late Oliver Harriman.

NEW IN SUITS



If clothes could speak the slip-over dress might truthfully boast: "I came, I saw, I conquered," for it made a complete triumph last summer. It was a long step in the direction of comfort for wear in warm weather. And now enters its near-of-kin in suits, traveling in the same direction. This new arrival is a two-piece affair in which a sleeveless coat is worn with a skirt to match and a blouse, usually of crepe or other silk, made in one with the skirt. The dress is complete in itself and can be worn without the coat. But some women object to going coatless on the streets, and this suit fits their needs. The model pictured is of pique twill with beige-colored blouse of crepe de chine. Silk embroidery in navy and beige finishes the edges of the coat and adorns the narrow cuffs.

Are You Equipped to Win Success?

Here is your opportunity to insure against embarrassing errors in spelling, pronunciation and poor choice of words. Know the meaning of puzzling war terms. Increase your efficiency, which results in power and success.

WEBSTER'S NEW INTERNATIONAL DICTIONARY

DICTIONARY is an all-knowing teacher, a universal question answerer, made to meet your needs. It is in daily use by hundreds of thousands of successful men and women in the world over. 400,000 Words, 2700 Pages, 4000 Illustrations, 12,000 Etymological Entries, 39,000 Geographical Subjects.

CHAS. C. MERRILL CO., Springfield, Mass., U. S. A.

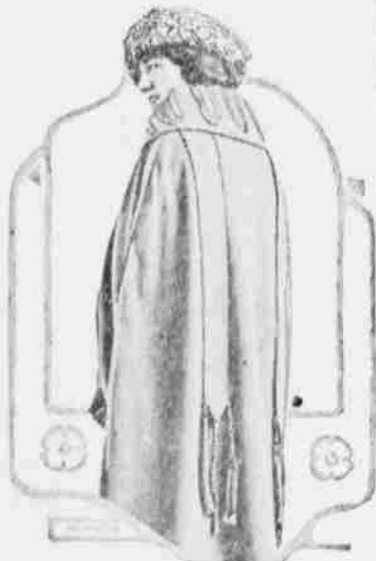
FOR THE 'TEENS



It is not difficult to solve the problem of dress for little girls in these days of specializing. Resourceful designers devote their time to putting materials into styles that are appropriate for the little miss and pleasing to her as well. They craftily take their cues from the "grown-up" modes, modifying them to suit the younger generation, as in the case of the pretty cape-wrap shown here.

This wrap for girls in their "teens" is a cape to which sleeves have been gracefully added. It is made of lightweight velours and has a full ripple back with a decoration of stitching in two rows around it. It has a large collar which is ingeniously arranged to draw up around the neck by means of a heavy silk cord that is threaded through large eyelets worked in silk like that of the attaching. The cord and eyelets are very decorative.

COATS RESEMBLE CAPES



One must look twice at many a spring wrap to determine whether it is a cape, pure and simple, or a more complex wrap. The more like a cape it looks the better its chances of winning approval from the fashionables. The cape has always stood woman in good stead, nevertheless it will not hold her allegiance season after season without modifications, and we have them in the cape-wrap.

For general wear the spring offers, among others, the graceful wrap shown here. It is made of tulle and has a large collar trimmed with applied loops of silk braid. At the back, loose, pendant panels of the cloth are finished with silk cords ending in slender tassels. Something between a sleeve and a slit at each side of the front allows freedom for the hands and arms. Altogether this is a smart and practical wrap for general wear and is developed in several coatings and colors.

REPUBLICANS!

Shall Oregon continue to hold the pre-eminence that is now hers? Shall she forge ahead as a leader in the Republican party?

Answer "Yes!"--Vote X13 for Ralph E. Williams for Republican National Committeeman

In the presidential election of 1916 when there was dissension and division everywhere, Oregon was the only state west of the Missouri river to go Republican. Harmony!

Progressives and Republicans united in giving credit for this remarkable achievement to Ralph E. Williams, national committeeman since 1908.

In recognition of this and other services Ralph Williams was elected vice-chairman, the second highest honor within the power of the Republican National committee to bestow. It is a position of influence to be reached only by years of faithful and intelligent service.

Ralph Williams is the first committeeman representative from any western state to be elected to the vice-chairmanship.

Ralph Williams is a veteran of the national organization. He stands at the head with the leaders. A new man would, of custom and necessity, stand at the foot with the followers.

Republican leaders, in Congress and out, are Ralph Williams' friends. This friendship means much to Oregon and the Northwest. Without ostentation Ralph Williams enlists the aid of these leaders for the things the Northwest needs from the national government.

Keep Oregon to the front -- Don't let her slump

VOTE FOR Ralph E. Williams FOR
Republican National Committeeman

Keep Oregon a Leader -- Vote X13 for Ralph E. Williams

(Paid Advertisement by W. B. Ayer)