
 PROFESSIONAL CARDS

DR. R. J. VAUGHAN
 DENTIST
 Permanently located in Odd-fellow's Building
 HEPPNER, OREGON

DR. A. D. McMURDO
 PHYSICIAN and SURGEON
 Telephone 122
 Office Patterson's Drug Store
 HEPPNER, OREGON

F. A. McMENAMIN
 LAWYER
 Office Phone Main 642
 Residence Phone Main 665
 Roberts Building
 HEPPNER, OREGON

DR. CLYDE R. WALKER
 PHYSICIAN and SURGEON
 Phone Connections
 IONE, OREGON

S. E. NOTSON
 ATTORNEY-AT-LAW
 Office in Court House
 HEPPNER, OREGON

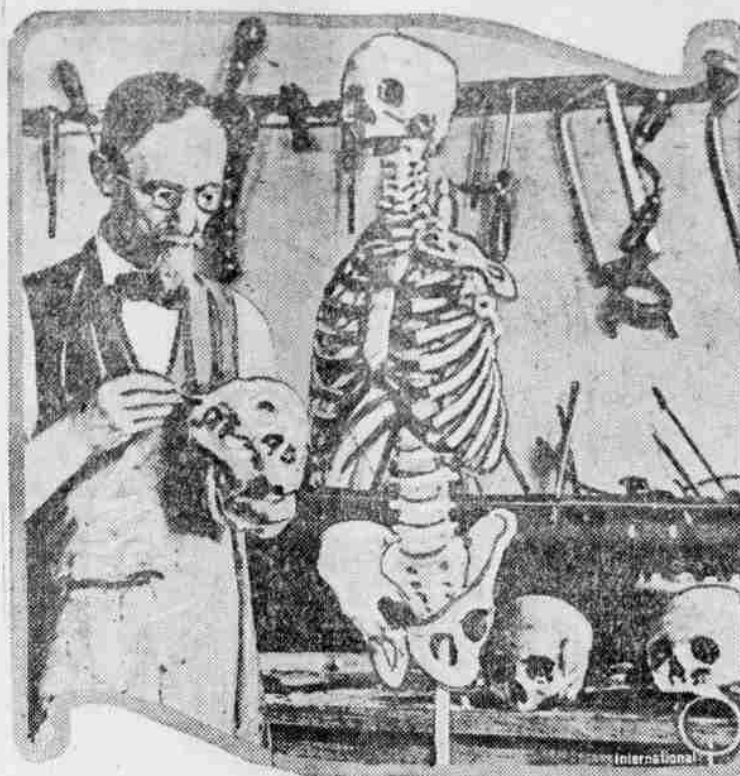
WOODSON & SWECK
 ATTORNEYS-AT-LAW
 Masonic Building
 HEPPNER, OREGON

SAM E. VAN VACTOR
 ATTORNEY-AT-LAW
 First National Bank Bldg.
 HEPPNER, OREGON

WATERS & ANDERSON
 FIRE INSURANCE
 Successors to
 C. C. Patterson
 HEPPNER, OREGON

MATERNITY HOME
 I am prepared to take a limited number of maternity cases at my home in east Heppner and assure best attention to all patients. Write or phone, MRS. G. C. AIKEN, Heppner, Or., Box 142. Phone 396. 2317

Assembling Skeletons His Vocation



How would you like to assemble skeletons for a living? This man does it and has been doing so for the past 30 years. He is connected with the Indiana Medical college, and his job is to assemble skeletons from the specimens used by the students of the college.

NOW KNOWN TO BE CLOUDS

Up to Year 1900 the Projections on Mars Had Been Thought to Be Mountains.

The first observers of projections on Mars had attributed them to the same cause that produces projections on the moon—that is, mountains. Such they were said to be in France and at Liek. This view, however, was in 1892 disputed by W. H. Pickering, who considered them to be not mountains, but clouds. This view was supported by A. E. Douglass, who observed them in 1892 at Flagstaff, Ariz. The mountain theory of their generation was shown to be untenable and their ascription to clouds proved to be the correct theory in December, 1900. Only a single projection was visible in 1900, 1903 and 1905. As a mountain does not change its place, and as nothing was seen where something had been visible, the phenomenon was proved to not be a mountain peak. Now the only other thing capable of catching the light before it reached the surface would be something suspended in the air—that is, a cloud. Deductions, therefore, from the rarity of the phenomenon alone showed that the projections must be clouds. Furthermore, the projection was smaller after the lapse of 24 hours. The something that caused it was not only not attached to the soil, but was moving and dissipating as it moved along. Clouds are the only bodies known to us which account for these metamorphoses. Clouds, then, and not mountains, are the explanation of the projections of Mars.—"Mars and Its Canals," by Percival Lowell.

LONG LOST USE OF WINGS

Ground Parrot, Found Only in New Zealand, Interesting to the Student of Evolution.

The wingless birds of New Zealand are particularly interesting to the nature student as illustrating the process of evolution. Nowhere but in their native land could these birds have survived, and, therefore, nowhere else would they have become wingless. New Zealand is the only region on earth where there are no destructive animals. Being unable to fly, the birds could not, of course, have escaped from any swift hunting animals such as abound in all other lands. It is interesting to note that the kakapo, or ground parrot, once had the use of its wings, but being a grass seed feeder and finding no enemies on the ground gradually ceased to fly and eventually lost the use of its wings entirely, though it can run very swiftly. These birds are so gentle and so unconscious of having any enemies that if a person sits down near one and keeps quiet it will presently tuck its head under its wing and go to sleep. The kakapo breeds, but once in two years, and the mother bird carefully hides the nest from her mate, though why she does so is unknown, the male showing no desire to harm the eggs or young birds. In this infrequent breeding is demonstrated nature's thoughtfulness—having no destructive enemies the kakapo would multiply to too great numbers if the breeding season occurred as frequently as with other birds.

Raising Bamboos in Louisiana.

The department of agriculture tells the people of this country that experiments in Louisiana show that Chinese and Japanese bamboo may be grown there and that the cultivation of some varieties may be profitable. Mentum is made, for instance, of *Phyllostachys pubescens*, which one may cut as a salad when the shoots are six or eight inches above the ground, or which may be used for timber later, as the "shoots" reach a height of from 60 to 70 feet in three weeks. The bamboo, we are told, may be used in building operations or for tele phone poles or spars, hence it is recommended as a source of wealth to those who live in southern Louisiana.

It may be profitable to them, but folks in the North feel that the Louisiana residents will find it more profitable to continue to raise sugar cane and the price of sugar, remarks the Hartford Courant.

Owls Lodge in Oxford. Owls, as is proper in the case of birds of such renowned solemnity and secluded habit, have always exhibited a particular liking for Oxford, where more than one college, but particularly Worcester, has its colony.

Recently they have established a new colony in the Ivy-covered walls of the Bodleian library and the Tower of the Five Orders, in the Old Schools quadrangle. Members of the Bodley staff now occasionally find relaxation from their duties by rescuing the young birds which find their way down on to the pavement of the quadrangle, and are unable to fly up to their nests.—Westminster Gazette.

Washing Rugs.

When either rugs or small carpets require washing dissolve four ounces of good white soap in four ounces of boiling water. When cool, add five ounces of glycerin and two ounces of chloroform. Bottle and cork well for use. When needed add one teaspoonful of the preparation to a pail of tepid water and wash the carpet with a flannel and soap in the usual way. One wash will have a wonderfully cleaning and brightening effect. Stretch out on a flat space, tightly nailing the corners or sides if necessary.

Safe Baby Carriage.

The Moro mother is never troubled by the fear that her baby coach is out of fashion, for she never has one. She throws her children on her shoulder, one on each side, perhaps, and the youngsters cling to her hair.

TYPICAL CANTEEN GIRL



Miss Mittie Burch of Washington, formerly a Red Cross overseas worker, who has been selected in pose for the reproduction of a typical canteen girl in the elaborate miniature model of the Red Cross canteen at Issoudun, France, first American camp from which the Red Cross flag flew. Aviators throughout the country raised the money for the model in memory of the comforts the canteen service abroad had given them. The miniature canteen when completed will be placed in the museum at the Red Cross national headquarters in Washington. It will be 8 feet long and will contain several figures.

Let Us Show You Our Line of

Plows Drills, Seeders and other seasonable farm machinery and implements

Peoples Hardware Company

25 SUITINGS

At GREATLY REDUCED PRICES

These Suitings are of highest quality and excellent designs. Come and get yours before the other fellow gets it.

Satisfaction guaranteed in all our cleaning and pressing work

Heppner Tailoring & Cleaning Co.
 Main St. G. FRANZEN Heppner

"PERMANENT AS THE PYRAMIDS"

Concrete Pipe Company
 Manufacturers

Sewer and Water Pipe
 Irrigation Pipe
 Culvert Pipe
 Hollow Silo Blocks

Cement Products

1003 North 10th St
 Phone 467 Walla Walla, Wash

Great Majestic

The "Thoroughbred"

Heat is essential to keep a family healthy. The Majestic is the most efficient, most economical, and most beautiful range ever made. It takes a great deal of fuel and gives the most complete service and is the only range that has a built-in broiler, and a built-in oven, and a built-in sink, and a built-in refrigerator, and a built-in ice box, and a built-in wash tub, and a built-in clothes wringer, and a built-in clothes mangle, and a built-in clothes dryer, and a built-in clothes iron, and a built-in clothes steamer, and a built-in clothes press, and a built-in clothes rack, and a built-in clothes closet, and a built-in clothes trunk, and a built-in clothes chest, and a built-in clothes cabinet, and a built-in clothes wardrobe, and a built-in clothes closet, and a built-in clothes trunk, and a built-in clothes chest, and a built-in clothes cabinet, and a built-in clothes wardrobe.

Our quality, many styles and sizes, each or several together.

Sold by

GILLIAM & BISBEE
 Big Demonstration Majestic Ranges at Our Store This Week

SHUTT

is carrying on a strictly legitimate Real Estate Business. He will not offer for sale any land that he would not be willing to buy himself at the terms offered.

SHUTT

has had over 23 year's continuous research of Morrow county land conditions, owning and operating ranches, and as tax collector and business man. Whenever he recommends a buy, you can bank on it. He has built up a big real estate business by square dealing and efficient services. If you have land to sell or buy, see

E. M. SHUTT The Real Estate Man
 Up-stairs in the Court House. Phone Main 922

Choice Cuts of the Best Meats

EVERY HOUSEWIFE WANTS TO SERVE THE best in Meats to her family. She can be assured she is doing so if she buys her Meats at this shop which is conducted in conformity with modern methods of sanitary marketing.

Central Market
 McNAMER & SORENSON, Props.

BURLAP SACKS
 For Potatoes at Sam Hughes Co.

ONLY 5 CENTS EACH

Better Come Early

SAM HUGHES COMPANY