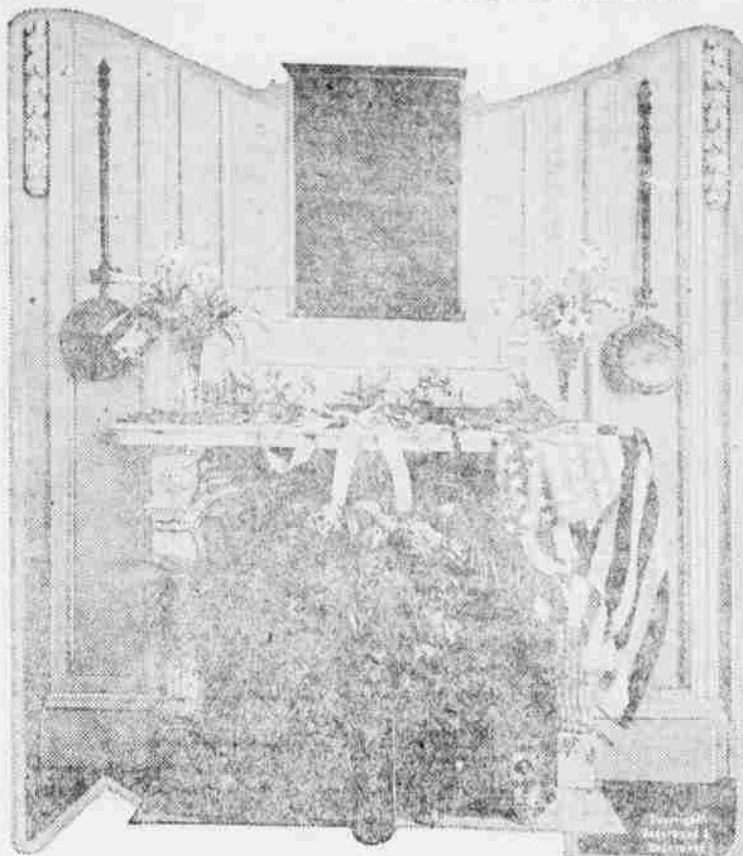


### Memorial to Mrs. Donald McLean



View of the bronze tablet erected in Continental Memorial hall in Washington, by the New York Chapter of the Daughters of the American Revolution in honor of Mrs. Donald McLean (Emily Nelson Ritchie McLean), president general of the D. A. R. from 1905 to 1909, and a charter member of the National Society of the D. A. R. and of New York chapter.

### STATE CHAMBER TO EXPAND ACTIVITIES

#### State-wide Appeal For Budget Made to Provide For Development Program.

What is the plan of the expansion movement of the Oregon State Chamber of Commerce? How is it to be carried out? What is it for?

These are the three questions uppermost in the minds of the majority of those who have been informed of the movement which the State Chamber launched April 19th with a survey of the state to set up preliminary organization and establish a direct connection with practically every community in the thirty-six counties of Oregon.

The expansion movement by way of explanation might be divided into three distinct classes:

- First—A survey of the state.
  - Second—An educational campaign to be carried on through local newspapers and by mailing literature pertaining to the movement direct to industries, firms and individuals interested in the development of the state.
  - Third—The intensive organization work at which time a state-wide canvass will be made, county by county, to raise a budget to enable the Oregon State Chamber of Commerce to carry on its program of development work for the state on a broader, more comprehensive scale. This canvass will be made throughout the state during June and July.
- This budget is to be obtained by popular subscription. The appeal will be state-wide and to everyone interested in the development of Oregon and his particular community.

heved the response will be met by the manufacturer, the merchant, the farmer and the individual, for each is vitally interested in seeing Oregon forge ahead and develop its advantages and resources.

#### Danger! Beware!

A woman who was too economical to subscribe for her home paper sent her little son to borrow the copy taken by her neighbor. In his haste the boy ran over a four dollar stand of bees and in ten minutes looked like a warty Summer squash. His cries reached his father, who ran to his assistance, and falling to notice a barbed wire fence, ran into it breaking it down, cutting a handful of flesh from his anatomy and ruining a five dollar pair of pants. The old cow took advantage of the gap in the fence and got into the cornfield and killed herself eating corn. Hearing the racket, the mother ran, upset a four gallon churn of rich cream into a basket of kittens, drowning the whole litter. In her hurry she dropped and broke, past all hope of mending, a twenty-five dollar set of false teeth. The baby, left alone, crawled through the spilled cream and into the parlor, ruining a twenty dollar carpet. During the excitement the eldest daughter ran away with the hired man, the dog broke up eleven setting hens and the calves got out and chewed the tails off of four fine shirts.

And all to save fifty cents! Moral: Subscribe for the Herald at once and protect yourself from such calamities.

Producing the wheat crop of the United States last year cost farmers \$2.15 a bushel, according to averages struck by the department of agriculture following a survey of 481 wheat farms. Taking \$2.20 as the basic price paid for wheat last year, and that figure at the terminals, at least half the growers lost money on their wheat, if the survey can be taken as

a representative one.

In the winter wheat areas costs ranged from \$1 a bushel for two farms to \$8.20 on one farm. The average cost was \$3.87. If the price received had been \$1.87 more than half of these winter wheat growers would have produced wheat at a loss, the department's report declares. In the spring wheat areas the average cost was much higher—\$2.95—the range running from \$1.10 for one farm to \$5.00 or over for 17 farms. If the price received had equaled the average cost, between 50 and 55 per cent of these spring wheat growers have failed to break even.

Yields averaged 14.9 bushels per acre for the winter wheat farms, and 8.4 bushels for the spring wheat farms, and the cost per acre \$27.86 for winter wheat, as against \$22.40 for spring wheat.

While the data given by the department of agriculture is produced by government investigators, it is hardly believed that a random survey of wheat farms in nine winter wheat areas of Kansas, Nebraska and Missouri, and five spring wheat areas in Minnesota, North Dakota and South Dakota would show a condition where more than half the farmers are losing money. It is an accepted fact among farmers in Emattilla county, a winter wheat area, that the average producing cost over the county falls considerably below the \$1.87 found by the investigators. Either middle western farmers are not economical in their methods or their land has ceased to give the best in it if he survey represents the actual condition for the country.

—East Oregonian.

#### NOTICE TO OWNERS OF STOCK.

Notice is hereby given to all owners of cattle and horses now running at large on lands owned or leased by us in Morrow county, Oregon, that if such cattle and horses are not taken off our property within two weeks from the date of this notice that we will take up all such stock and proceed to sell same according to law.

Dated at Heppner, Oregon, this 22nd day of June, 1920.

8-10 HYNDR BROS.

## As sure as you are a foot high—

you will like this Camel Turkish and Domestic blend!



YOU never got such cigarette-contentment as Camels hand you. Camels quality and expert blend of choice Turkish and choice Domestic Tobaccos make this goodness possible—and make you prefer this Camel blend to either kind of tobacco smoked straight!

Camels mellow-mildness is a revelation! Smoke them with freedom without tiring your taste! They leave no unpleasant cigarette aftertaste nor unpleasant cigarette odor!

Give Camels every test—then compare them puff-for-puff with any cigarette in the world!



Camels are sold everywhere in specially sealed packages of 20 cigarettes for 20 cents or ten packages (200 cigarettes) in a specially sealed case. We strongly recommend this carton for the home or office supply or when you travel.

R. J. REYNOLDS TOBACCO CO. Winston-Salem, N. C.

### All Morrow County News Our Specialty. THE HEPPNER HERALD

# Firestone

EXTRAVAGANCE has gone by the board. Thrift is in the air. Men are buying where the value is.

The Firestone thrifty 3 1/2 is leading the small-tire field today. Because it is built on real thrift methods from start to finish.

Firestone experts on the spot in the raw material markets of the world are able to get first choice of quality at quantity purchase prices.

Firestone men have worked out the way to produce this tire by concentrated methods—no waste material, no waste motion, no waste space.

And Firestone volume output, through thousands of dealers, permits selling at a close margin. The user gets the benefit. Try this Firestone thrifty 3 1/2.

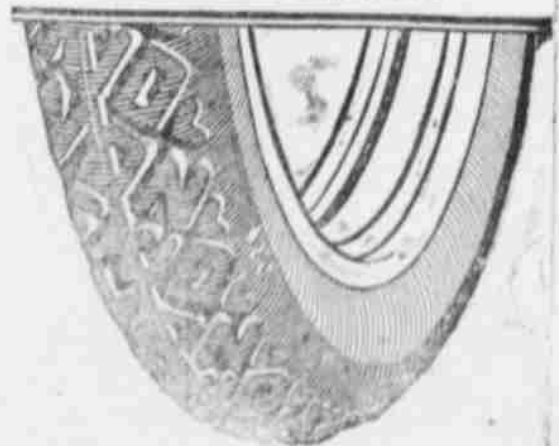


## 30x3 1/2

(non skid)

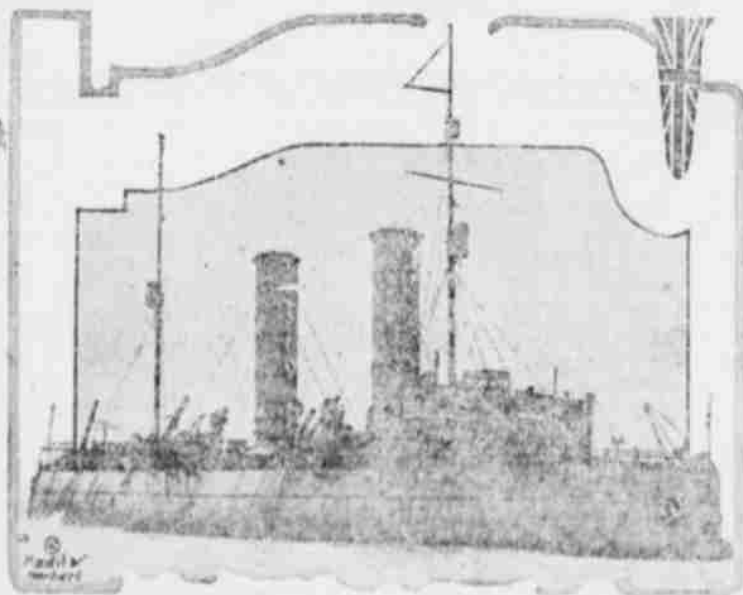
## \$22.50

Gray Tube \$3.75  
Red Tube \$4.50



# Most Miles Per Dollar

### On Rescue Trip to the Kara Sea



The British ice breaker Svjatogor, most powerful ice breaker in the world, leaving England on a perilous journey to the Arctic to rescue starving Russian men, women and children who are entrapped in the Kara sea. Svjatogor is equipped with all modern hospital equipment.

#### BITS OF INFORMATION

Donor plays a very important part in the education of boys and girls in Japan.

Black, green, brown and white amber, as well as the yellow variety, is sometimes found.

More cases of illness and deaths are caused by malaria than by any other disease in India.

Mrs. Lloyd George, wife of the British premier, is thoroughly Welsh in her tastes, both in attire and in cuisine.

The lullaby is the largest of the lullaby family.

Stenotyping was invented in 1725, plaster casts being used in the original process.

Goliath wore armor of bronze. This is the first reference in history to the use of armor.

The making of dolls by hand has been an established industry in Birmingham, England, for 200 years.

The library of one of the kings of India was so vast that a thousand scribes were required to transcribe it.