

HOME INDUSTRY

Co-operation is the order of the present day. Working together means greater progress in a shorter time.

There is a lot of money in the country, something like 265 billion dollars that is being increased at the rate of ten billions every year.

We met every situation that the war demanded. Surely it ought to be as easy to meet any situation that will come up in peace time.

Twenty years ago (1898) wheat was 62 cents and the \$1.00 wheat almost a "pipe dream." Eggs brought the magnificent sum of ten cents a dozen.

You could get butter for a song and not have to be much of a singer at that. A whole sheep could be bought for a silver dollar and today you need spy glasses to see a \$1.00 worth of spare ribs and when you get them it is only after being sand papered.

There is every reason why manufacturers should go after business in a fashion never before attempted.

The money is here—people are open to conversion. Ask them to buy your product—not because you

live in Oregon, but because you offer goods made under superior conditions in a superior way by superior men. And that service second to none is a part that you throw in for the fun of it.—Portland Commerce.

ALLEGED ORIGINAL OF "HUCK FINN" PASSES

B. F. Finn who claimed to be the original "Huckleberry Finn" of Mark Twain's stories died at his home at Belknap bridge, on the upper McKenzie river, 45 miles east of Eugene recently. He was about 99 years old and had lived in the mountains of Lane county for 30 or 40 years. Men who are acquainted with people and scenes connected with stories written by the great humorist deny that Finn was the original "Huckleberry Finn," but for many years he contended that he was and recounted many incidents of early days on the Mississippi river that appear to coincide with those related by Mark Twain.

Bill Tucker of Blackhorse was transacting business in town Friday.

All the local news, \$2 the Herald.

ROAD BUILDING

ISSUE WEATHER FORECASTS

Aid for Automobile and Motortruck Traffic During Winter-Over Lincoln Highway.

(Prepared by the United States Department of Agriculture.)

The weather bureau of the United States department of agriculture has arranged, in co-operation with the state highway commission of Pennsylvania, to aid the automobile and motortruck traffic during the winter over the Lincoln highway between Pittsburgh and Harrisburg by giving out daily information of the weather conditions prevailing over the route and issuing weather forecasts and warnings of heavy snows and cold waves for the region traversed. The plan is for the assistant superintendents of highways at points along the route to report to the weather bureau office at Pittsburgh at eight o'clock each morning by telephone or telegraph the depth of snow or ice on the highway, giving its general condition. These reports

MODERN BUILDING FOR LOWLY SWINE

Clean, Comfortable Quarters for Hogs Worth While.

FARMER'S CHANCE NOW HERE

Removal of Government Restrictions Enables Him to Construct Buildings That Are Badly Needed.

By WILLIAM A. RADFORD.

Mr. William A. Radford will answer questions and give advice FREE OF COST on all subjects pertaining to the subject of building work on the farm, for the readers of this paper. On account of his wide experience as Editor, Author and Manufacturer, he is, without doubt, the highest authority on all these subjects. Address all inquiries to William A. Radford, No. 127 Prairie avenue, Chicago, Ill., and only inclose three-cent stamp for reply.

The farmer, who has been denied during the last two years the new buildings the expansion of his business has required, will hail with satisfaction his chance to put up that new barn, silo, horse barn, or cattle or hog house that he has needed for many months.

But during the time of his inactivity there have been rapid strides made in designing commodious and sanitary

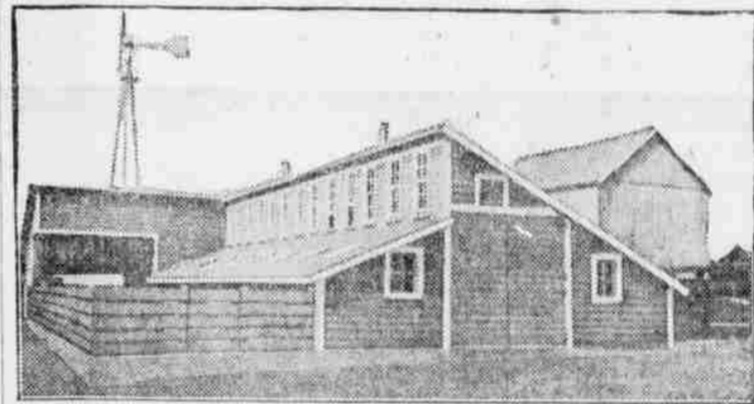
fine place in bad weather for grinding feed, etc. The gate at the outer end of the scales swings out and joins a small gate at the loading chute, making it handy to do the loading.

The sleeping pens, granary and corn crib are all floored with hollow tile with two inches of concrete over them. The corn crib and granary have studding sockets set in the concrete on top of the wall. The sills in the hog house are bolted down to the top of the foundation wall. There is a shut door between the corn crib and granary, so as to make it tight when the granary is full of small grain.

The floor of the hog house slopes to the center, so as to drain into the sewer which runs out under the feeding platform. The feeding platform slopes to the outside and also at one end. The feed trough also slopes and is fitted with a drain at one end.

All Fittings Are Modern. The fittings of the house are modern in every respect. One of these is a waterer that will not freeze. Concrete floors and feeding troughs make it easy to keep the building clean, and cleanliness has been found to be a prime factor in the successful production of hogs.

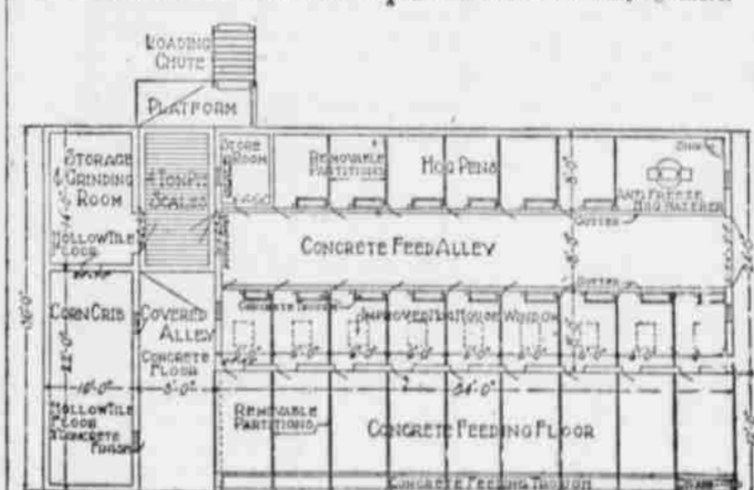
This hog house is only one of the buildings that will be erected on the farms this year that contains many up-to-date features in construction and equipment. There is a growing demand among the farmers for these modern build-



an angle iron bolted to the side of the house, which holds one end of a 2 by 4, the other end being fastened to the fence on the outside of the platform. The 2 by 4 acts as a brace to hold the fence rigid and also serves as a means of fastening the top of the gates. The lower part of the gate is held in place by 2 by 4 braces on the gates dropping into holes made to fit them in the concrete platform. In order to remove the gates it is only necessary to loosen two bolts and lift them out.

Scales Under Cover. The scales are under cover in the passageway between the hog house and the granary and are fitted with a swinging gate at each end, one of them swinging inside so as not to interfere with the sliding door which closes the passageway up tight. This passageway is all under cover and makes a

future, if the industries of this country were to flourish in the face of the world's competition, it was above all things necessary that research should play a greater part in them than it had in the past. The modern world had no room for antiquated and unscientific methods.



farm buildings. One of the things that the modern idea of farm efficiency demands is that the hogs be housed in a building that can be kept clean and is so arranged that the swine can be cared for with the least amount of effort. It may be trite to say it, but hogs are valuable property these days. A little more money spent on the hog house means fatter and healthier animals, and each additional pound is worth real money about the time snow flies and the hogs are marketed.

Herewith is shown a modern swine establishment, in which are embodied a corner, granary, feeding platform and scale house. The building is what is known as the saw-tooth hog house. While the floor plan shows the arrangement of these features, it might be explained a little more fully by a description of it.

Room for Eighteen Sows. The hog house proper was laid out to accommodate eighteen sows; two stalls in one end were used to provide plenty of room around the water pans and another stall in the other end for the scale box and small store room; so, as it is arranged now it contains fifteen usable stalls.

The ventilation is taken care of by two combination smoke stacks and ventilators in the roof and a shut ventilator built in the end above the door. This ventilator is fitted with a door on the inside, so that it can be closed tight when necessary. All the gates between the stalls are removable, so that one or more pens can be thrown together.

The feeding platform also can be used as outside yards by putting in the cross gates. Each six feet there is

GOOD ROADS

COMPLETE MILITARY HIGHWAY

Road From Alexandria to Camp Humphreys Is Longest Road Outside of Cantonments.

(Prepared by the United States Department of Agriculture.)

Nine miles of concrete road between Alexandria, Va., and Camp Humphreys, Va., soon will be ready for use, marking the completion of planning and supervisory work done by engineers of the bureau of public roads of the United States department of agriculture for the military authorities. The road from Alexandria to Camp Humphreys is the longest military highway outside of cantonments that has been planned and supervised



Building a Better Road.

by engineers of the bureau, although the total construction planned and supervised by these engineers aggregates several hundred miles and covers practically all the recognized types of construction, from sand clay to first-class bituminous surfaces and concrete roads. Seventeen highway engineers and one superintendent of construction were detailed to military work by the bureau in July, 1917, the period of their assignments varying from three to fifteen months.

KEEP TRAVELED ROADS OPEN

Highway Commissioners of Several Eastern States Plan to Remove Snow This Winter.

Highway commissioners or their representatives from New York, Connecticut, Massachusetts, Pennsylvania and Delaware recently met with the Highway Traffic association of the state of New York and reported that plans had been made to keep the most traveled roads open every day this winter. Of an appropriation of \$1,000,000 made by New York for maintenance of the routes used by army transport trucks \$50,000 is available for snow removal. In Connecticut the cost of snow removal on 1,000 miles of highway aggregated about \$50,000 last winter, or approximately \$50 a mile.

WAR TEACHES GREAT LESSON

Soldiers Returning From France Tell of Many Advantages of Improved Highway System.

One of the great lessons at home which the great war taught us is that of good roads. Ask any of the soldiers from "over there" when they return how they found the roads and highways of Europe, and ask especially those engineers and members of the motor corps what, in their estimation, was one of the greatest advantages the allies had in the transportation of food and supplies and they will state that outside of a never ceasing flow of motortrucks and equipment, the excellent highways and roads permitted the uninterrupted use of this equipment.

ROAD OFFICIALS TO QUALIFY

Civil Service Examinations Required of Candidates for Highway Offices.

Some of the states and cities require candidates for appointment to the highway departments, thus removing the offices from political influence. This is greatly to be desired. Men who have shown good administrative ability should be continued in office. In the communities where this policy has been followed there is general satisfaction with road and street conditions.

Caring for Highways.

In caring for highways—used now ten times as much as they were a year ago—nothing could fit the case so well as "a stitch in time saves nine."

Cellars for Vegetables.

Storage cellars for vegetables need a cool temperature. If there is a furnace in the cellar, partition off the space for storage.

Chicken Selective Draft.

Culling is the selective draft applied to your flock of chickens.

Advertisement for KRYPTOK GLASSES, featuring illustrations of faces wearing different styles of glasses and text describing their benefits.



Road Roller Doing Repair Work.

are published in the newspapers and furnished to the different automobile clubs, thus becoming available to automobile and motortruck drivers passing over the highway. The forecasts and warnings are given public distribution and telegraphed to the superintendent of highways at Harrisburg, who gives instructions to his forces along the highway to make provisions for the anticipated weather conditions. This service was in operation last winter and gave great satisfaction. The weather bureau is ready to give similar service to other traffic routes as may be desired.

At what age should a man marry? At the parsonage.

Put four letters before a Southern city and spell a vehicle? Automobile.

If Dick's father is Tom's son, what relation is Dick to Tom? Grandson.

Why may carpenters reasonably believe there is no such thing as stone? Because they never saw it.

What nation is most likely to win out at the peace conference? Determination.

Why does a window pane blush at this time of the year? Because it sees the weather strip.

What is the keynote to good manners? B natural.

Advertisement for BLACK LEGS, featuring an illustration of a cow and text describing a product for preventing leg issues in livestock.

Advertisement for PEOPLES CASH MARKET, C. D. WATKINS, Proprietor, located in Heppner, Oregon.

Advertisement for CHAS. M. HOWE THE AUCTIONEER, who will treat you right, located in Heppner, Oregon.

Advertisement for Home Products for Home People! WE MANUFACTURE White Star Flour, Whole Wheat, Graham, Cream Middlings, Roll Barley and all Mill Feeds. GENERAL STORAGE AND FORWARDING. HEPPNER FARMERS ELEVATOR CO.

Large advertisement for Gilliam & Bisbee, featuring the text 'To Everybody: A happy and prosperous 1919' and the company name in large letters.