

LOCAL ITEMS

George Broadley was a business visitor from Lexington Friday.

Grover Goff, of Butter creek, was trading in town one day this week.

Arthur Dystra, well known stockman of the Balm Fork section, was in town Friday.

Pendleton Round-Up dates have been definitely set for September 18 to 20 for this year.

Dell Ward, one of the successful wheat growers of the Black Horse district spent Friday in Heppner.

Chris Brown, one of the well known wheat growers of the Willow creek section, was in town Friday.

Frank McCabe, a well known stockman of Butter creek was transacting business in Heppner Friday evening.

Clinton Sharp, of Butter creek, was a county seat visitor Friday. Mr. Sharp is one of the successful stockmen of that section.

Friday was Chinese New Year but no tong wars broke out in Heppner. The local colony was about as joyful over this usually noisy event as a dull and dumb picnic.

The Oregon Legislature is going to try to restore capital punishment. Hanging has been a lost art in Oregon for several years but if the member who introduced the bill has any ulterior motives against one, William Hehenzollern, we are with him to the finish.

Nat C. Goodwin famous comedian died in New York last week. Goodwin was a protege of Tony Pastor in the early days of his career. Later Goodwin's matrimonial ventures attracted almost as much attention as did his acting. He was one of the few prominent actors who could not be attracted to the pictures.

Editor Pattison of the Herald spent Saturday and Sunday at Boardman a new town in the irrigated section along the Columbia river. During his absence the destinies of the Herald were in the hands of the cub reporter and his son, Everitt, to whom the readers must look for satisfaction for things that "got in the paper wrong." If weather conditions permit Mr. Pattison will make a tour of inspection of the district around Boardman and will give a write-up of it in a subsequent issue of the Herald.

A band of marauding youths, ranging in ages from 14 to 16 years, were loose in the north end of town Thursday night. One of them had a gun of large calibre with him and fired several shots, and another threw a heavy stone against the door of the M. L. Case residence. When youthful pranks get into the class of rowdiness it is time for either the parents or juvenile court authorities to apply some restraining measures. If actions of this kind are allowed to go unnoticed they will soon lead to something more serious.

CHURCH NOTICES

Christian Science  
Christian Science services will be held at 11 a. m., next Sunday in L. O. O. F. hall. All interested are invited to attend.

FOUNDATION OF FARM LIFE

Upon Good Roads Depends Marketing of Various Crops and Better Schooling of Children.

Good roads are the very foundation of country life. Upon them depends the marketing of what farmers grow, the pleasures of social life, and the better schooling of the children. If life is made better by good roads, surely they are worth paying for. There is nothing so much worth while as happiness. The interurban lines have increased it for a few; the auto has brought it to many more, and good roads everywhere would bless all.

Cause of Soft Shells.  
Soft-shelled eggs are often caused by the fowls being confined, becoming overfat, and from lack of mineral matter.

Feed for Idle Horses.  
Horses will do well, if not worked, on clover hay alone. Even if worked moderately, good clover hay may be made to be sufficient.

You bet'cha!



"The more a man knows about genuine tobacco, the surer he is to see the value of Real Gravely in comparison with ordinary plug."

Good taste, smaller chew, longer life is what makes Genuine Gravely cost less to chew than ordinary plug.

Write to: GENUINE GRAVELLY DANVILLE, VA. for booklet on chewing plug.

Peyton Brand REAL CHEWING PLUG Plug packed in pouch

PUBLIC ROADS

ROAD WORK AWAITED PEACE

Small Amount Money Expended Because of Desire to Conserve Labor, Money and Transportation.

(Prepared by the United States Department of Agriculture.)

Although \$14,550,000 was available for expenditure on the post roads from the federal aid road act, only \$425,445 was paid from federal funds in the highway construction season of 1918 on all projects. The reason for this, according to the annual report of the secretary of agriculture, was the steps taken to conserve money, labor, transportation and materials in highway work during the war, and at the same time to facilitate really essential highway projects.

In connection with the federal aid road work, a letter was addressed to each state highway department asking that a program of federal aid construction be submitted at the earliest possible date, in which would be included only those projects which the state highway departments considered vitally necessary to the transportation facilities of the country.

At the request of the capital issues committee, engineers of the department were made available for inspecting and reporting upon proposed highway and irrigation and drainage bond issues. Inspections were made of 181 separate projects, involving total bond issues of \$36,912,896. An arrangement was made with the fuel administration whereby highways of special importance should receive enough bituminous material to provide for adequate maintenance, and, where necessary, to permit construction and reconstruction. From May 13, 1918, when the co-operation became actively effective, until the close of the fiscal year, 2,235 applications, calling for 75,000,000 gallons of bituminous material, were received from states, counties and municipalities. Of this amount approval was given and permits were issued for 38,000,000 gallons.

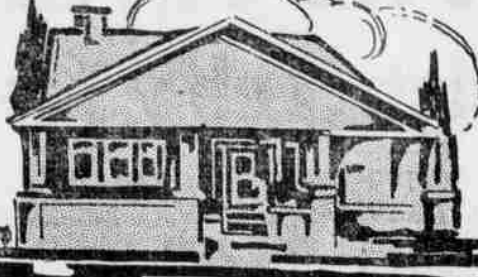
In order to co-ordinate the activities of various government agencies, so far as they relate to highways; better to conserve materials, transportation, money and labor; to eliminate delays and uncertainties, and to provide pos-



Truck Lead of Hot Bituminous Concrete Being Dumped Ready to Be Placed on Surface.

sitive assistance in carrying on vitally effective highway work, the secretary requested each of the government departments and administrations interested to name a representative to serve on a council to deal with highway projects during the period of the war. As a result, the United States highways council, consisting of a representative from the department of agriculture, the war department, the railroad administration, the war industries board and the fuel administration was formed in June. During the first four months of its existence the council passed upon about 5,000 applications, involving nearly 4,000,000 barrels of cement, 3,250,000 tons of stone, 1,140,000 tons of gravel, 1,207,000 tons of sand, over 77,000,000 brick, and nearly 20,000,000 pounds of steel, and 140,000,000 gallons of bituminous materials.

The DAWN of OUR NEW IDEA in BUILDING



HIGH PRICED CROPS LOW PRICED LUMBER

The average rise in prices of building material has amounted to about 30 per cent. The rise in prices of farm and many manufactured products has amounted to from 100 to 300 per cent.

Think of it! With the same quantity of wheat, corn, oats, alfalfa, hogs, etc.—as before the war, you can build two houses, two barns, two chicken sheds, two anything—Your farm products will buy twice as much honest, serviceable, workable,

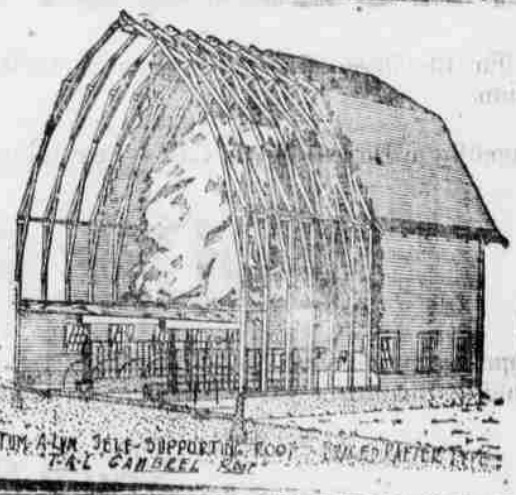
"TUM-A-LUMBER"

as they would three years ago—wouldn't it be the part of wisdom to build or remodel NOW whatever may be needed. A new house, a barn, a garage, a grain bin, a corn crib, an implement shed, a hog house, a Tum-A-Lum Silo, a chicken house. The best investment one can make is in better buildings—means more and greater profits.

Prices Will Not Drop For Years

Unless there is a general panic—and you would be the last to want them to drop. But the chances are building materials will rise. Reconstruction, higher costs—resuming industries forced out by war will do it.

"TUM-A-LUMBER" a byword for good building material. "TUM-A-LUMP" for all that's good in coal or wood.



GAMBREL ROOF BARN

1914 Price—1000 bushels wheat  
1919 Price— 600 bushels wheat.

COME IN TODAY. TALK IT OVER WITH US

See our pictures, plans, cost estimates.—No obligations to buy as we are glad to be of service.

TUM-A-LUM LUMBER CO.

HEPPNER

LEXINGTON

IONE

Are You Equipped to Win Success?

Here is your opportunity to insure against embarrassing errors in spelling, pronunciation and poor choice of words. Know the meaning of puzzling words. Increase your efficiency, which results in power and success.

WEBSTER'S NEW INTERNATIONAL DICTIONARY is an all-knowing teacher, a universal question answerer, made to meet your needs. It is in daily use by hundreds of thousands of successful men and women the world over.

400,000 Words, 2700 Pages, 6000 Illustrations, 12,000 Etymological Entries, 30,000 Geographical Subjects.

GRAND PRIZE, (Highest Award) Panama-Pacific Exposition.

REGULAR and INDIA-PAPER EDITIONS. WRITE for Specimen Pages, 5 CENTS. Please Enclose 10c for postage and paper.

G. & C. MERRIAM CO., Springfield, Mass., U. S. A.

Removal Sale

In order to reduce stock as much as possible before moving to our new building we are offering many staple articles at greatly reduced prices. Dressers, Chiffoniers, Dining Tables, Ranges, Heaters, and many other things including a big cut in wall paper. Seventy-five patterns reduced from 25c to 5c. Dishes and earthenware will also go at slaughter prices, as we will have many odd lines which will be closed out at extremely low figures.

Case Furniture Comp'y

PRINCE ALBERT

the national joy smoke

YOU can't help cutting loose joy's remarks every time you flush your smokespot with Prince Albert—it hits you so fair and square. It's a scuttle full of jimmy pipe and cigarette makin's sunshine and as satisfying as it is delightful every hour of the twenty-four!

It's never too late to hop into the Prince Albert pleasure-pasture! For, P. A. is trigger-ready to give you more tobacco fun than you ever had in your smokecareer. That's because it has the quality.

Quick as you know Prince Albert you'll write it down that P. A. did not bite your tongue or parch your throat. And, it never will! For, our exclusive patented process cuts out bite and parch. Try it for what ails your tongue!

Tippy red bags, tidy red tins, handsome pound and half pound tin humidors—and that clever, practical pound crystal glass humidior with sponge moistener top that keeps the tobacco in such perfect condition.

R. J. Reynolds Tobacco Company, Winston-Salem, N. C.