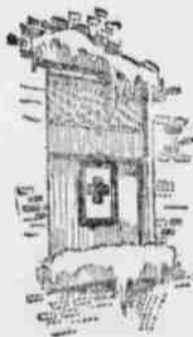


Join



—but just join once



Put your flag
in the
front window

Two and three and more 1919 memberships in the Red Cross are not necessary — one is enough, and all that is expected of you.

When you join you will receive a 1919 membership button, a service flag and a folder with ten Red Cross Christmas seals.

Wear your button on the outside of your coat — when your button is where it can be seen you won't be asked to join a second time.

Put your flag in the front window of your home — with an additional membership cross for each one of your family who joins.

If you have been a member during 1918, RENEW your membership NOW — this will be your only opportunity to answer "present" to the 1919 Red Cross Christmas Call.



Wear your
button where
it can be seen

Join the Red Cross
—all you need is a heart and a dollar

THIS SPACE CONTRIBUTED BY