

W. A. Ewing, President  
T. J. Munkers, Vice Pres.  
E. D. Myers, Cashier

**The Scio State Bank**  
Does a General Banking Business. Interest paid on time deposits.

THOMAS LARGE, Resident Agent

City and Farm Property

**Sold**

List with me—No exclusive contract

**RILEY SHELTON**

Real Estate Broker and Notary Public

Abstracts Obtained, Examined  
SCIO OREGON

**DR. A. G. PRILL**

Physician and Surgeon  
District Surgeon S. P. Railway  
Scio, Or.

**DR. C. FICQ**

DENTIST  
Albany Oregon

**G. F. Korinek**  
Veterinarian

STAYTON, OREGON  
Calls answered Day or Night  
Tuberculin Testing

COL. W. F. WRIGHT  
**Auctioneer**  
1144 Ferry St. Salem, Ore.  
2% for All Sales  
Satisfaction Guaranteed

**HAULING**

Any Kind Anywhere Any Time

SEE

**Fred Sturges, Scio, Oregon**  
BONDED CARRIER

**Lowe & Morrison**

Reliable Undertakers  
All funerals given personal attention by Mr. Lowe

N. U. Lowe Phone 91  
N. I. Morrison Phone—Day, 397  
Phone—Night, 395

This ad is addressed TO

**You**

If you are on the farm, we have the

**Lumber**

you need to repair your barn and sheds.

If you are in town, we can supply you with what you need.

We Deliver.

**J. W. Copeland Yards**

QUALITY : SERVICE

Second and Calapooia  
Phone 275 ALBANY, ORE.

**PATENTS**

Obtained. Send model or sketch and we will promptly send you a report. Our book on Patents and Trade-marks will be sent to you on request.

**D. SWIFT & CO.**

PATENT LAWYERS  
305 Seventh St., Washington, D. C.  
Over 34 Years' Experience

**INCREASE PROFITS BY GROWING FEED**

The dairy farmer who can raise all or a big proportion of the feed for his dairy cows has a distinct advantage over the dairyman who has to purchase his feed, according to Prof. J. H. Fitch, head of the dairy department at the Kansas State Agricultural college. His feed will be cheaper, giving him greater profits on his milk products, and he has the chance of getting market prices for his surplus feed.

Alfalfa is the best hay for dairy cattle, Professor Fitch stated. In sections where alfalfa cannot be grown, sweet clover is being used to great advantage. Soy beans and cowpeas are being used in some sections, both as a hay crop and protein substitute.

Corn or "cane" silage is the best and cheapest feed with which to supplement legume hay. As to the use of corn, "cane," or kafir as a silage crop, Professor Fitch recommends the one which will give the largest yield with the greatest degree of certainty. For higher production it is necessary to use grain in addition to the bulky feeds. Kansas produces corn, oats, barley, kafir, "cane," and wheat, all of which may be used in a dairy ration. Bran is another popular concentrated feed because of the large amount of wheat milled. Linseed oil-meal and cotton-seed meal are both used as concentrated protein for high producers.

Besides the natural pasture crops, the use of wheat and rye for pasture is very extensive. Sweet clover and sudan grass, both of which are relatively new, have also become very popular as pasture for dairy cattle.

**Future of Dairy Herds Depends on Heifer Care**

Declaring that the future of the dairy herd depends a great deal upon the care given the heifer calves which will be the cows of tomorrow, H. M. Jones, dairy extension specialist at South Dakota State college points out that the usefulness of many a good cow is impaired by neglect or mistreatment as a calf.

"Feeding is of prime importance," he says. "On well-managed dairy farms, regularity in feeding is the rule, and the pails used for feeding calves are as clean as those into which milk is drawn for human use. The best insurance for the health of the calf is cleanliness in quarters and feeding pails."

Raising the calf on whole milk is not economical, according to Jones, but it is necessary that the whole milk be fed for at least the first two or three weeks of the calf's life. After that, he suggests a gradual shifting of skim milk plus a grain ration of ground oats and corn. The cause for an "undersized" cow, he says, can usually be traced to too scanty feeding during the early period of her life.

**Various Roots Are Good Feed for the Dairy Cow**

Roots of all kinds are good feed for dairy cows. Beets are especially valuable, for they not only supply nutrients in a good form, but they do not in any way affect the quality of milk. Rutabagas and turnips do affect the quality of milk, and especially if fed just before milking. If they are fed after milking, it is difficult to discern any flavor in the milk, but butter made from it will, upon standing a few weeks or months, develop an objectionable flavor. This has led some creameries producing high-quality butter to request their patrons not to feed turnips or rutabagas.

**Dairy Notes**

Cows do not enjoy moldy silage, and it makes horses sick.

Feeding minerals to dairy cows is relatively new, and we have not learned about it yet.

Clean the barn lots and dairy premises and haul off litter in order to destroy breeding places for flies.

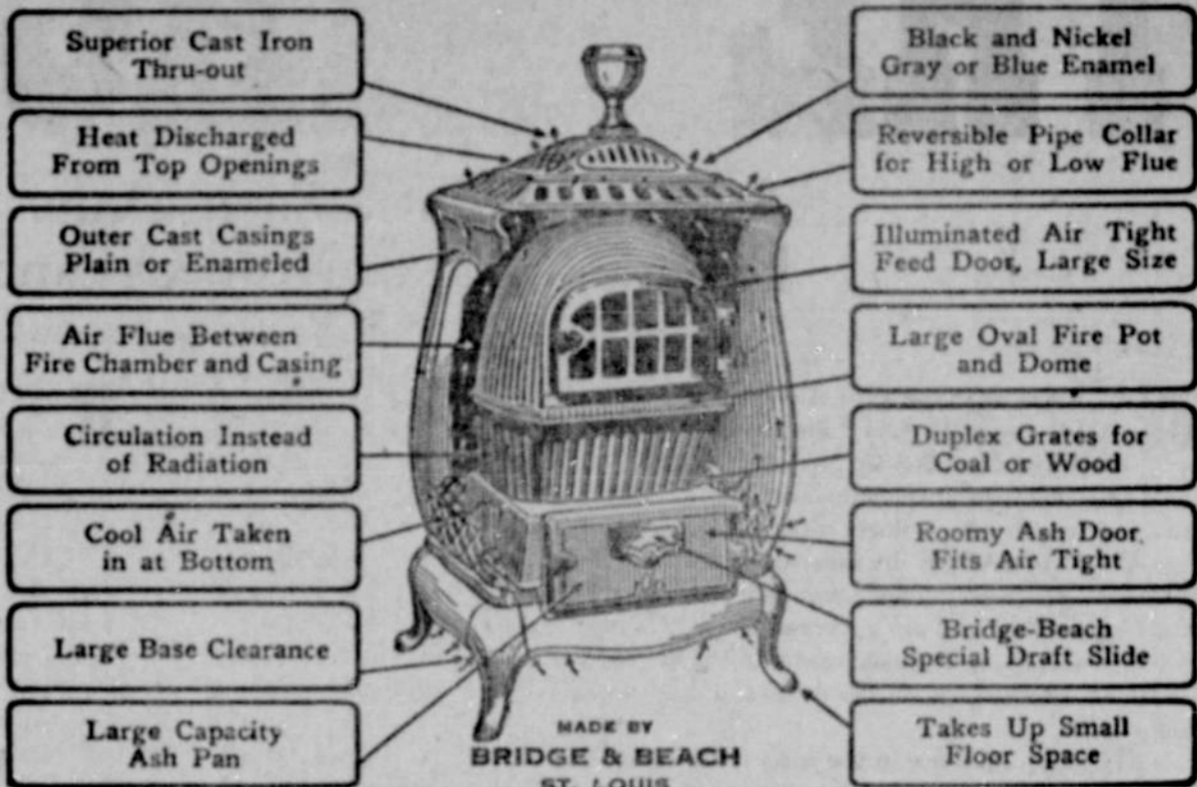
The choice of a herd sire may make or break a man in the dairy business, say dairy specialists of the Pennsylvania State college. The future herd is dependent upon influences in operation now.

Remove the cows from pastures infested with wild onions and bitter weeds three hours before milking, to prevent bad odors and flavors to milk and cream.

Seed or sod the pastures with Bermuda, lespedeza or other desirable grasses. Native pasture grasses can not be depended on.

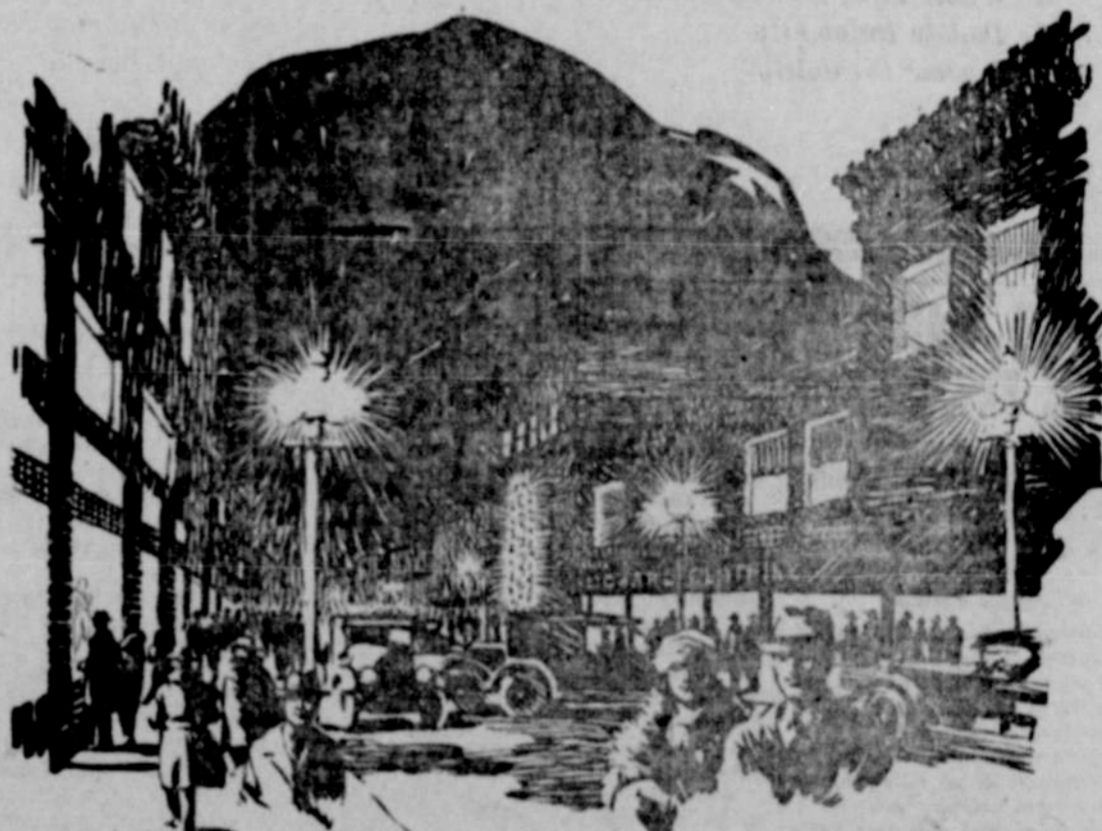
The good cow shows femininity in conduct, in disposition and in expression.

**SUPERIOR CIRCULATOR**  
Distributes a Comfortable Warmth Thruout Several Connecting Rooms



Ideal for Use in Houses Having no Basement for a Furnace  
Price \$87.50 For Sale by **R. M. CAIN**

Also Agency for Heatrolas, the Parlor Furnace, and Lang and Universal Ranges



**When Business is Good**

SATURDAY night is a mighty good time to ask yourself this question: "Is our community sending more money out of town than is coming in each week?" Of course the only safe answer is "NO!"

This means that we folks in this neighborhood must patronize local supply men and merchants if we expect our town to prosper and "stay on the map."

Frankly, it means that every citizen will find it most profitable to read the advertisements in this paper every issue, and to follow their good advice.

Our advertisers are all personally interested in this town—and in YOU. They are helping you build a better home community. When business is good, their profits are being shared with you in an endless chain of co-operative betterment.

*Read the Ads in this Paper*  
and save yourself money by trading at home

If one of the Tribune advertisers "sting" you, tell us; if he treats you right, tell him.