

PIONEER STATUE TO BE UNVEILED

Presentation of "Pioneer Mother" Memorial; Canoe Fete, Set for Saturday

A stone statue of an elderly woman sitting comfortably at rest after the end of her colorful life of hardships and sorrows will be presented to the University of Oregon and to the people of Oregon Saturday afternoon as a part of the annual junior week-end festivities on the campus.

The statue is that of the 'Pioneer Mother' the work of Phimester Proctor, who did this sculpturing at the instigation of Burt Brown Barker, vice-president of the university, who is desirous of perpetuating the memory of the pioneer mother, and his mother, not during the covered wagon stage, nor during the hardships and struggles which they endured, but during the quiet and peaceful days as they sat down to enjoy the fruits of their labors. The statue is a gift from Mr. Barker. It has already been placed in the quadrangle fronting the Women's building and will be unveiled Saturday afternoon at 4 o'clock at a short public ceremony.

The statue is expected to commemorate the Pioneer Mother in a manner such as the 'Pioneer' statue in front of the library commemorates the sturdy pioneer during his westward migration.

Banquet on Saturday

Saturday evening mothers visiting on the campus, pioneers of the state, townspeople and students will attend a huge banquet at McArthur Court. Following the banquet the visitors are invited to attend the annual canoe fete on the mill race. This is recognized annually as the most beautiful event of the entire Junior week-end and always draws a capacity crowd.

The mothers and other guests of the university are also invited to attend the festivities on Friday, including the huge campus luncheon and the Junior prom in the evening. Booths for registration will be placed Friday noon in the administration building and will remain open until Saturday afternoon at 4 o'clock when the dedication ceremony begins. Marjorie Swafford of Oregon City, is in charge of this phase of the arrangements.

METHODISTS TO OBSERVE MOTHERS' DAY SUNDAY

"Mothers of Men" will be the theme of the morning message at 11 o'clock at the Methodist church Sunday. The church school meets at 9:45.

The Epworth League is planning a special "Mothers" service for the 6:30 hour. Mothers are to be guests of their children and will have a part in the program.

At 7:30 Rev. Poindexter will speak to parents upon the subject: "How present the Bible to children." This meeting will be open for discussion and he young people are invited to participate.

THREAT AGAINST MILL IS ERRONOUS SAY OFFICERS

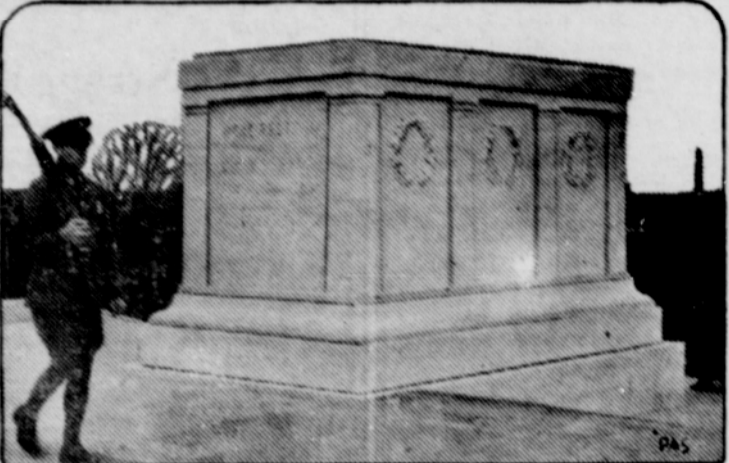
Statements that threats to burn the Booth-Kelly Lumber mill in Springfield had been made are not entirely true according to city officials. They declare that police officers did receive information concerning the possibility of "pulling the job" if the night watchman can be put out of the way. Whether the

Double Twins in Double Wedding



David and John Ware, twin sailors, met Rhoda and Ruth Matthews, twin sisters, at Long Beach, Cal. A double-barreled engagement followed.

Tomb of the Unknown Soldier



The massive monument beneath which lie the remains of one of America's war heroes, whose name nobody knows has just been completed in the National Cemetery at Arlington, Virginia, in sight of the Nation's capital.

"Job" meant the burning of the mill, robbing of the bank, or some other crime is still uncertain.

Methodist Aid Meets Regular monthly meeting of the Ladies' Aid of the Methodist church was held Wednesday afternoon. Routine business was transacted.

Track Meet to Be At Corvallis

Sixth Annual High School Track and Field Meet is on College Campus Saturday

Oregon State College, Corvallis, May 5—A host of outstanding high school athletes representing all parts of the state will arrive here this week-end for the sixth annual Oregon state high school track and field meet Saturday.

Preliminaries will be run off at 10 o'clock Saturday morning in the 100-yard dash, 120-yard high hurdles, 220-yard dash, 220-yard low hurdles, shot put, discus, javelin, and broad jump.

Events in the afternoon program will be 100-yard dash, pole vault, high jump, discus and shot put, all at 2:00; mile run, 2:10, 220-yard dash, 2:25; 120-yard high hurdles, 2:40; 440-yard run, 2:55; javelin, and broad jump, 3:10; 220-yard low hurdles, 3:15; 880-yard run, 3:20, and half mile relay, 3:30.

Points will be given the same as last year with five for first place winners; four, second; three third; two fourth and one fifth. Points in the relay will count the same as in the other events.

Prizes will consist of gold medals for first place winners; silver, second and bronze, third. Plaques will be awarded the schools placing first, second and third in the meet and also the winning relay team. The Windgnale cup will be presented the winner of the half-mile event.

Ralph O. Coleman, director of intramural athletics here, will be starter of the meet.

Factory Wages Affect Farmers

Oregon Agriculture Rises and Declines With Manufacturing Payrolls Says Report

That fluctuation in factory payrolls in the United States affects farm income in Oregon materially is indicated by a report on the agricultural outlook just released by L. R. Brethaupt, agricultural economist of the college extension service. The volume of production of Oregon farm products is another factor which affects cash income from year to year, which was estimated at \$124,000,000 average from 1926 to 1930.

A gain of about 5 per cent a year, was made from 1924 to 1929 in the gross cash income of Oregon's farms from crop and animal production, says the circular. During this period of increasing agricultural income, "industrial payrolls were growing larger and the physical volume of production in Oregon increased about 4 per cent a year."

Ends Two Years Ago

This period of increasing farm income was brought to an end abruptly two years ago, according to the report, although production continued to increase in 1930 and fell off only moderately in 1931. The situation is illustrated by a chart in the circular which shows that farm income in Oregon dropped from 109 per cent of the 1926-30 average for the 1929 output to 84 per cent for 1930 products, and to about 55 per cent for the 1931 production. The decline in factory payrolls was only slightly less severe.

On considering the 1932 farm income outlook, the statement says that crop conditions are more promising now than a year ago, which might boost production somewhat, but "improvement in Oregon's cash farm income depends largely upon higher farm prices."

Factory Payroll Half

The index of factory payrolls in February was only 52 per cent of the 1923-25 average, or approximately one-half as much as from 1925 to 1929. This situation has caused a weak demand and low purchasing power for farm products.

Taking account of minor products not included in the government estimates, the average value of crops and livestock sold from Oregon's farms from 1926 to 1930 was placed at \$124,000,000. In addition it was estimated that the value of farm products used for food in the farm homes was \$12,000,000 to \$15,000,000 not including the value of crops used for feed and seed on the farms.

SPRAY IS NEEDED IN WET SPRING

Unusual Amount of Rainfall Greatly Increases Necessity for Fruit Spraying

Calyx and 15-day sprays for control of apple and pear scab are unusually important this year because of the long period of wet spring weather, says H. P. Bars, plant pathologist of the Oregon State college experiment station. He adds that for these sprays it is just as essential to cover the foliage with spray as it is the fruit, in fact the leaves afford much more opportunity for infection and spread of the scab disease than the fruit itself, and unless protected the foliage will raise such a crop of scab spores that no amount of later spraying will fully protect the fruit.

Mr. Bars advises using some of the new types of wettable sulfur or non-caustic sulfur with the codling moth spray applications. Chemists are now making this wettable sulfur so fine that it takes less material per 100 gallons of water to give protection than with the old more coarsely ground types.

Grapes Need Care Finely powdered "300 mesh" sulfur may be used as a dusting sulfur in the control of grape mildew which is found almost universally on all grapes that have some of the European types in them. The American, or Concord type, is not usually affected by this disease.

Control of this powdery mildew is comparatively simple if dusting is started when shoots are six to eight inches long and repeating every ten days or two weeks until the blossoming period is over, says Mr. Bars. The sulfur dust will not hurt the set of fruit. If no sign of mildew is seen after the fruit is set further dusting may usually be omitted during dry weather, but if it should happen to show up again the dusting will need to be repeated.

Full directions for orchard protection from pests and diseases may be had in Oregon Extension bulletin 431 entitled, "Orchard Protection Program for Oregon."

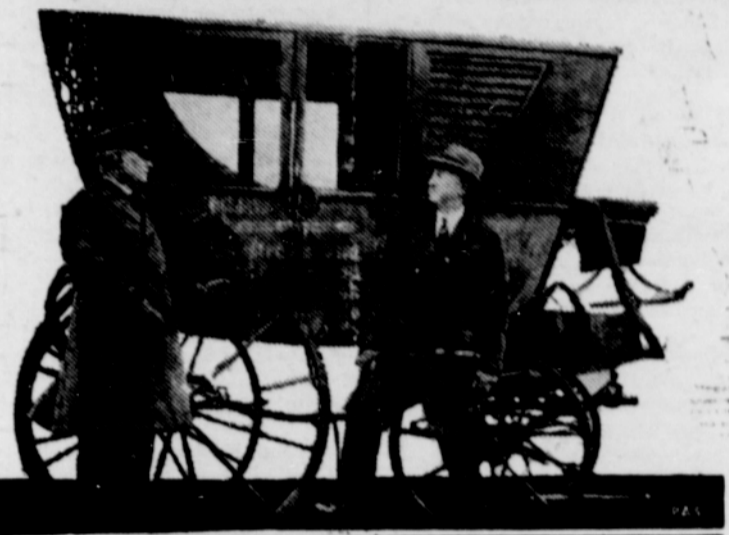
SHORT TIME LICENSES

Special seasonal licenses for farmers and others who use trucks and trailers to haul farm produce and machinery may be obtained by applying at the Sheriff's office now. The licenses are issued for six months, May 1 to October 31, for a fee one-half of the regular sum charged.

"First Lady" Sets Fashion for Cotton



George Washington Rode in This Coach



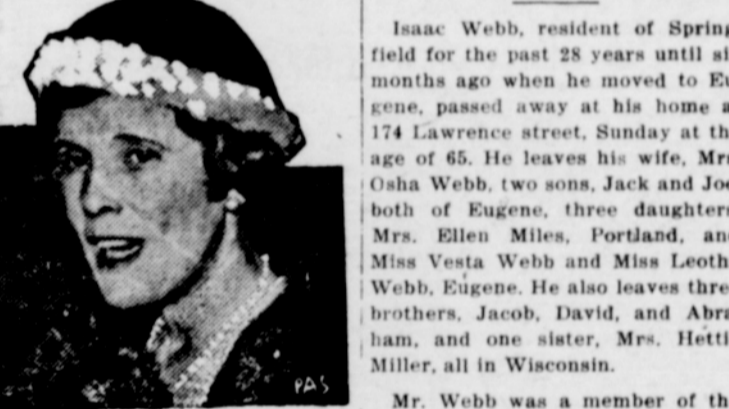
The ancient vehicle in which Washington rode to his first inauguration in New York has been preserved by the Frankford Historical Society.

Democrats Dine to Honor Jefferson



Left to right, these party leaders who met at Washington are Jouette Shouse, executive chairman of the Democratic National Committee, John N. Garner, Speaker of the House, and ex-Governor Alfred E. Smith.

"Wet" Leader



Mrs. Charles H. Sabin, president of the Women's Organization for National Prohibition Reform, urges repeal of the 18th Amendment.

Ruth at Bat



"Babe," the Home Run King, caught a bad cold and had to lay off for a while, to the disappointment of the Yankees.

FEW APPLY FOR VACANT LOTS TO PLANT GARDENS

A very few people in Springfield have applied for vacant lots on which to plant gardens this spring according to I. M. Peterson, city recorder, and Lum F. Anderson, chief of police and street commissioner. The city council has offered the free use of lots and free seeds are available at the City Hall for those people who have no employment and who need relief.

To date very few of the people receiving relief in Springfield have applied for the use of a vacant lot for garden purposes.

Tuesday morning at 10 o'clock, Rev. Harry Neat officiated and interment was made in Laurel Grove cemetery.

YEAR ROUND VEGETABLE GARDEN TO BE TALKED

An explanation of the Year Round vegetable garden project which has been so successful in some parts of the county will be made to housewives of the Vida district Friday afternoon at 2 o'clock when Miss Gertrude Skow, Lane county home demonstration agent, meets with the group at the home of Mrs. C. W. Allen.

May 8

Of all days of the year, Mothers' Day is the time for flowers! Nothing else carries quite the same significance of deep affection. Every woman loves flowers, and every mother will doubly appreciate them as a symbol of your thought for her.

Corsages and Special Arrangements for Mothers' Day

KIRKLAND FLORAL CO.

Phone 86-W

Irish-Murphy Co.

Springfield, Oregon

Low Price - High Quality

Grocery prices are as low and quality is as high in Springfield as any place in Oregon. Service can not be excelled. Trading at home with home people provides employment for your neighbors who contribute toward the support of your city and schools.

<p>Bliss Coffee</p> <p>The new vacuum pack tin.</p> <p>1-Lb. Can ... 25c</p>	<p>CAMPBELL'S</p> <p>Pork and Beans</p> <p>No. 1 Tall</p> <p>Can ... 5c</p>
<p>Small Beans</p> <p>White</p> <p>6 Lbs. ... 23c</p>	<p>BLUE STEM</p> <p>Flour</p> <p>49 Lb. Sack, \$1.05</p>
<p>Grape Fruit</p> <p>Per Can 5c</p>	<p>MISSION BELL</p> <p>Toilet Soap</p> <p>Per Bar 5c</p>

...CANDY...

Special Mother's Day Boxes.

Nothing that you can send Mother on May 8 will displace a nice special box of our candy. Packed as they are these boxes will be deeply appreciated by mother. They are put up for her and no one else. Don't forget—give her candy!

Ketels Drug Store

In the New Store Springfield

A Debutante's Quest for Love

Man Made the Town

By Ruby Ayres

Ruby Ayres is famous for her ability to write swift-moving romances that touch the heart and entertain the mind. Her new story, **MAN MADE THE TOWN**, is in her best vein. Her heroine, Diana, is a lovely, wayward girl, who has flung herself feverishly into the social round, partly out of youthful love of gaiety, partly to forget the wound a man has dealt her pride.

The hero is a noted young physician, who knows how to heal bodies, and souls, too, but cannot keep himself from pain. Nor can he shield Diana from a new hurt.

Other characters claim important role—Dennis, for instance, the fascinating man-of-the-world, and Rosalie, the strange, red-haired woman who plays so mysterious a part in the doctor's life.

With her usual skill Mrs. Ayres spins her tale, through one interesting episode after another, to a dramatic finale.

Read this delightful love story, starting

Thursday, May 12

The Springfield News

Business Always Looks Dark To He Who Waits

Easy chairs went out of style almost two years ago. Getting business today requires action. Business staffs are too small and the business man does not have hours enough to personally go out after every piece of business to be had... through hustling. That is where the printed word works most effectively for him. And the cost of selling is so much less... upon strained budgets. Printing prices in our shop are also down, but there's no let down in the quality of the work. Prompt service too. We are geared for speed. No waiting here.

The trade does not know what you have to offer unless you tell them... day in... and day out. Give your business a reputation for being up and doing by keeping the people informed of the many bargains to be had in your store or shop. There is character in good printing. Let us demonstrate that fact. We specialize on—

Booklets...
Pamphlets...
Letter-heads...
Catalogues...
Broadsides...
Bills...

Office stationery and forms of all kinds...
Phone 2, we will Call

The Willamette Press - - South 4th St.