

TOWN AND VICINITY

Here from Marcola—Mrs. C. M. Miller came in from Marcola last Monday.

From Jasper—Mrs. Bob Wallace, of Jasper was a Monday visitor here.

Mayor Returns—Mayor C. O. Wilson returned to the city Saturday evening from a business trip to San Francisco.

Here Saturday—Mrs. Hazel Russell of Thurston, was in town last Saturday.

From Fall Creek—W. B. Klasinger of Fall Creek was a week-end visitor here.

Here from Rainbow—Mr. and Mrs. George Williams came down from Rainbow last Saturday.

Pengra Man Visits—Clarence Ek, of Pengra, was in town over the week-end.

Down from Leaburg—Mr. and Mrs. Chester Faulkner, of Leaburg spent Monday in the city.

In From Thurston—W. Rennie, of Thurston, was one of the week-end visitors to the city.

Son Born—A baby son was born to Mr. and Mrs. W. K. Murphy of this city last Friday.

To Creswell—Mr. and Mrs. Fred Louk and family motored to Creswell Sunday to visit with Mrs. Louk's parents, Mr. and Mrs. Howe.

Returns from Portland—Dr. and Mrs. W. H. Pollard who left Thursday morning for Portland returned to the city Friday.

From Marcola—Mr. and Mrs. Wesley Scoggins of Marcola were in town Saturday. Mr. Scoggins was injured in an accident Tuesday.

Leaves Hospital—Mrs. Leo Wilson was discharged from the Pacific Christian hospital in Eugene last Monday. She is now staying with her sister-in-law Mrs. Norman Bates on 5th street.

Jasper Woman Improves—Mrs. Clark Randall, of Jasper, who was operated on recently at the Pacific Christian hospital in Eugene is reported convalescing.

Accident Victim Improves—Charley Jack, of Camp Creek, who was recently injured in a sawmill is recovering according to word received by one of the local physicians.

Goes to Roseburg—F. B. Hamlin went to Roseburg over the week-end to see his mother, Mrs. J. H. Hamlin who has been ill. Mr. Hamlin reports his mother improving.

Tank is Installed—The Springfield laundry has recently installed a new hot water tank. The tank is effective in utilizing steam shot back from different apparatus and condensed therein.

Sad News Received—Mr. and Mrs. C. E. Swartz received the sad news Monday morning of the passing at Goodland, Kansas, of an old friend of theirs, Mrs. T. P. Leonard. Mrs. Leonard made a visit to Springfield a short time back.

Service Station Man Ill—George Davenport, who runs a service station in West Springfield, is confined to his bed with illness. Mr. Davenport is one of the leading promoters of the West Springfield drainage district.

Patient Improving—Mrs. J. Richter received word this week from Mrs. Vina McClain who last week was taken to Portland following a serious illness that she was improving nicely. Mrs. McClain is staying with her son and daughter-in-law, Mr. and Mrs. F. E. Lemley in Portland.

Truckman Leaves—Floyd Throope, who was chief mechanic for the fleet of trucks used in the construction work done on the Willamette Pass road left last Sunday for California. Since cessation of the highway work Mr. Throope has been visiting his brother at Marcola.

When a Winstonville woman was told in Winston County Court to report what she said to her landlord when he asked her for the rent, she asked: "Are you going to clear the court first?"

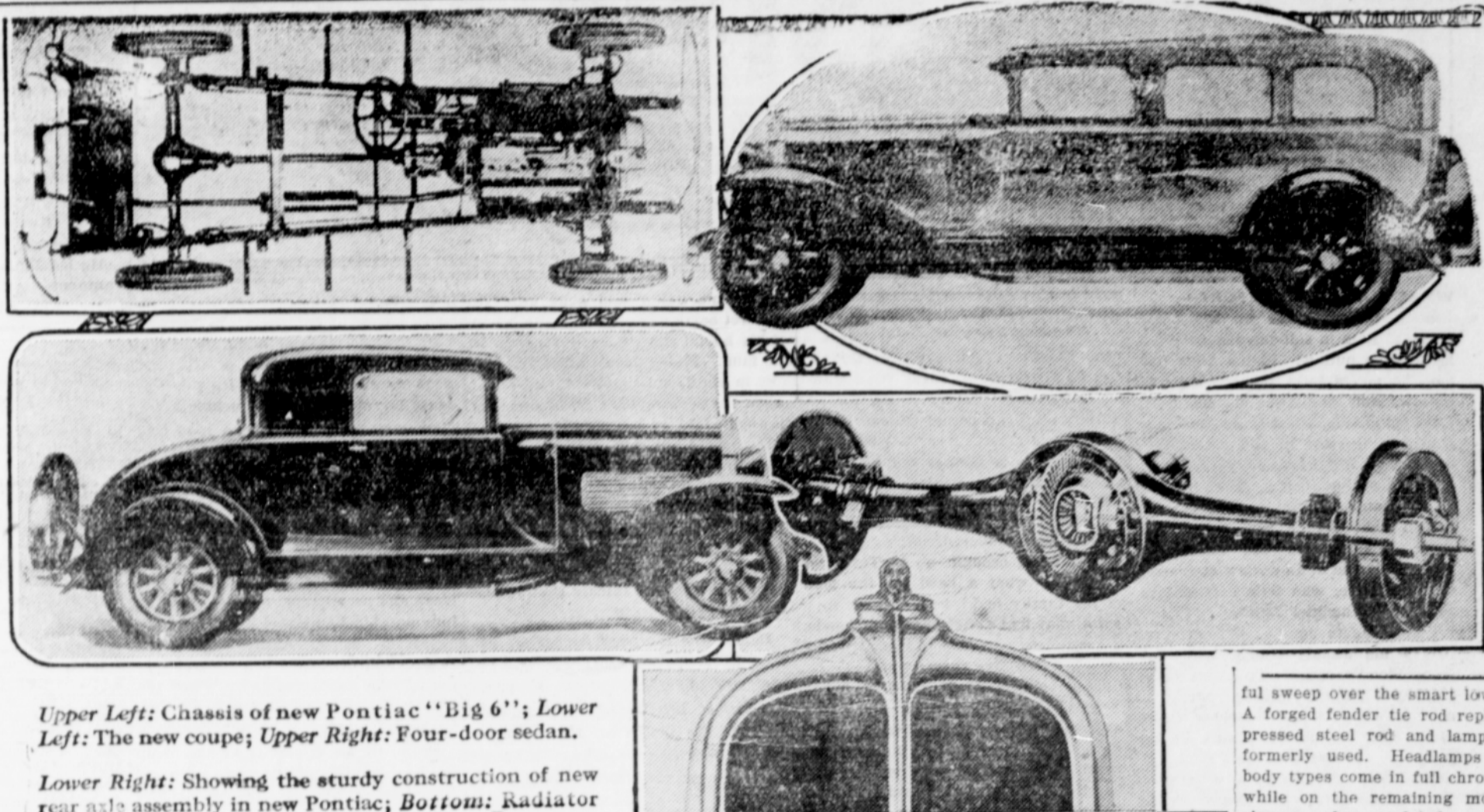
If a freight train at a crossing Hits an auto fair and square, There's the freight train—Where's the auto? Echo answers, "Where, oh where?"

Burglar No. 1: "I think we have got everything. We haven't overlooked anything, have we, Spike?" No. 2: "I don't think so, but we'll get a newspaper in the morning and make sure."

Housekeeper: "I never do feed tramps."

Old Tramp: "Aw, who's askin' ya to? Give us the grub—I'll feed myself."

SMART ENGINEERING DESIGN SHOWN IN NEW PONTIAC:



Upper Left: Chassis of new Pontiac "Big 6"; Lower Left: The new coupe; Upper Right: Four-door sedan.

Lower Right: Showing the sturdy construction of new rear axle assembly in new Pontiac; Bottom: Radiator

ful sweep over the smart low wheels. A forged fender tie rod replaces the pressed steel rod and lamp support formerly used. Headlamps on four body types come in full chrome plate, while on the remaining models the rims are chrome plated.

A full side view shows to best advantage the original lines of the new car. The slightly arched window design, with new paneling effect between the windows; a high waist line, and unique new concave moulding distinguish the Fisher bodies. This new belt moulding starts at the cowl and completely encircles the body. It is not continued down the hood, as the Oakland models, but a new curved pillar line, quite similar in appearance to one of American's costliest cars, runs from the center panel on the cowl down to the rear of the hood.

New Pontiac "Big Six" Has Promise of Great Value

The new Pontiac "Big 6" shown for the first time at the New York national automobile show and which is being placed on display in dealer's showrooms throughout the country this week, more than fulfills the advance promises of big car performance, big car appearance and big car value made in the preliminary news announcement in December, according to dealers and officials who have seen the new car and driven it. "It is essentially a new car from radiator to tail lamp and includes chassis improvements that give the car flexible performance comparable with cars in a higher price range," according to L. M. Dreves, Pacific

Coast regional sales manager, who predicts that the new Pontiac "Big 6" will still more firmly entrench itself in the favor of motorists everywhere by reason of the extraordinary value evident in the 1929 car.

All the bodies are entirely new, the

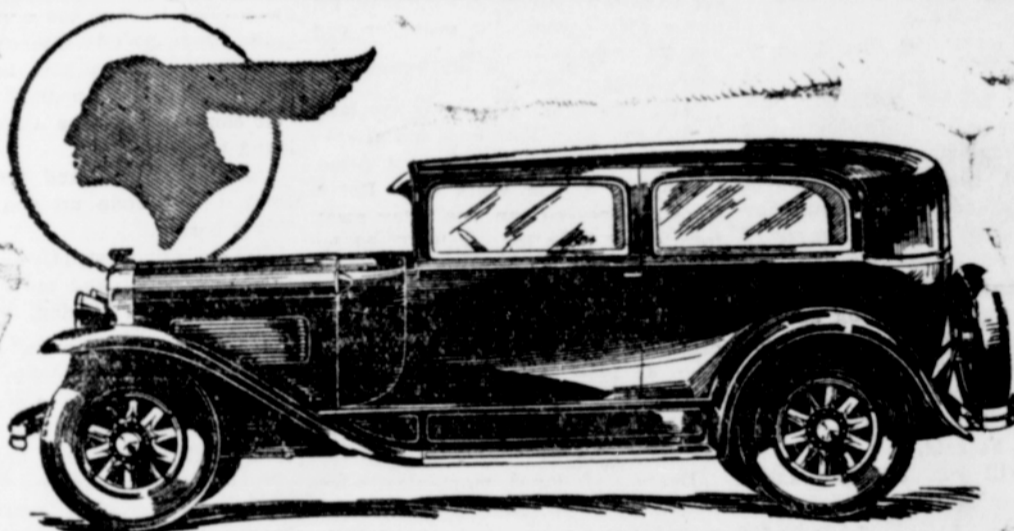
line including a 2-door sedan, 4-door sedan, coupe, sport roadster with folding rumble seat, sport phaeton, convertible cabriolet with rumble seat, and a laudatlet sedan with folding rear top quarter. The last two are innovations in the Pontiac line, having the appearance of custom built bodies.

Outstanding features contributing to the extraordinary performance of the new Pontiac are a larger and more powerful engine; new counter-weighted crankshaft; new transmission; larger carburetor, intake manifold and valves; wider springs with new shack-

les self-adjusting for wear; increased value list and new Hotchkiss drive.

The shell of the radiator, narrow and built up to 35 inches in height, gives to the front the appearance of power and fleetness borne out by the performance of the car. No emblem or nameplate marks the front of the radiator shell, but the familiar "Chief Pontiac" radiator cap ornament is retained. A chrome plated bar extends vertically from top to bottom of the radiator core.

Larger fenders, full crowned and with beaded edge, flare out in grace-



3-Door Sedan, \$745 Body by Fisher

announcing The New PONTIAC BIG SIX

Introducing Big Car Standards of Luxury, Style and Performance at \$745

TODAY a new type of low cost motoring luxury is available. It embraces big car style. It provides big car riding comfort. It embodies big car quality in unseen parts. It is offered by a brand new automobile—the New Pontiac Big Six.

Frankly, the New Pontiac Big Six was designed to appeal to a certain group. This group is made up of people who are beginning to move up in the world. Many of them will soon make the first step up in the quality of their cars. The New Pontiac Big Six was designed for them.

It comes to them entirely new in appearance. Stunning new bodies by

Fisher contribute to the big car beauty and big car style presented by the car as a whole.

Progressive people are seeking greater luxury. The Pontiac Big Six offers them the luxury for which bodies by Fisher are famous the world over. It provides the smooth-riding qualities of a car 167 inches in overall length, with accurately balanced rotating mechanical parts and such advanced comfort features as adjustable drivers' seats.

It is a six with the added power of a larger L-head engine and the added smoothness imparted by a dynamically balanced, counter-weighted

crankshaft and the famous Harmonic Balancer. Its new brakes are of the dirt-and-weather-proof internal four-wheel type.

It reveals big car performance even to the point of developing big car power and big car speed.

Only a few highlights in its construction have been mentioned. Just enough to prove that the Pontiac Big Six is entirely new and capable of meeting progressive Americans' demand. But the amazing thing about it is that it gives so much big car luxury, style and performance at prices which come within practically everyone's reach!

Prices \$745 and up, f.o.b. factory, plus delivery charges. Bumpers and rear fender guards regular equipment at slight extra cost. Check Oakland-Pontiac delivered prices—they include lowest handling charges. General Motors Time Payment Plan available at minimum rates.

W. R. DAWSON Springfield, Oregon

Back to Stage



The famous American actress, Maude Adams, who abandoned her career for a cloistered life ten years ago, will return to the stage, it is rumored in New York. It is said that she plans to give a series of readings from her repertoire.

Coming To

EUGENE

Dr. Mellenthin

SPECIALIST in Internal Medicine for the past fifteen years

DOES NOT OPERATE

Will be at OSBURN Hotel WEDNESDAY FEBRUARY 6 Office Hours: 10 a. m. to 4 p. m.

ONE DAY ONLY

No Charge for Consultation

Dr. Mellenthin is a regular graduate in medicine and surgery and is licensed by the state of Oregon. He does not operate for chronic appendicitis, gall stones, ulcers of stomach, tonsils or adenoids.

He has to his credit wonderful results in diseases of the stomach, liver, bowels, blood, skin, nerves, heart, kidney, bladder, bed wetting, catarrh, weak lungs, rheumatism, scatica, leg ulcers and rectal ailments.

Below are the names of a few of his many satisfied patients in Oregon who have been treated for one or the other of the above named causes:

- H. H. Blake, Marshfield.
- Elmer Booker, Condon.
- Thos. Burke, Willamina.
- Mrs. M. R. Cooper, Oregon City.
- D. G. Horn, Bonanza.
- E. M. Hurt, Arlington.
- Mrs. George W. Mathes, Ashland.

Remember above date, that consultation on this trip will be free and that his treatment is different.

Married women must be accompanied by their husbands. Address: 224 Bradbury Bldg., Los Angeles, California.