

# No Decisive Swing to Either Candidate in Straw Vote

**Vote Now At 559,806 for Hoover and 499,122 for Smith; Balloting Exceeds Expectations**

Balloting in the Nationwide Straw Poll conducted by this newspaper in conjunction with 2,000 others the country over has to date far exceeded the expectations of the Autocaster News Service, through which Nationwide organization this poll is being taken. There have been well over a million votes cast to date.

Still nothing decisive can be ascertained from this straw vote as yet. Hoover, true, is consistently in the lead, but his lead is quite slight. He has 559,806 votes compared to Smith's 499,122 votes. In actual numbers the difference between these two figures seems quite large, but on a percentage basis the difference is small. Hoover has about fifty-two and eight-tenths percent of the total vote. This is a gain of one per cent over last week, when he had but fifty-one and eight-tenths per cent of the total vote. When the first compilation of results was made, Hoover had sixty-eight per cent of the total vote. Since then his percentage has been going down slowly, but this week he seems to be gaining again.

The general tendency, however, of the vote seems to be a tendency to "even up". Smith constantly approaches Hoover's figure, then falls back again. The same is true of the Straw Vote taken by the Hearst newspapers, where Hoover has, according to very recent figures, 257,873 votes to 238,630 for Smith. Hoover has been in the lead in this Hearst poll, but his lead has been for the most part a lead of perhaps 10,000 votes. Recent ballots boost him up a little higher.

The fascinating fact about all this is that Straw Votes in previous years have shown entirely different tendencies. The man to win finally was generally way up ahead in the Straw Votes. In the Coolidge-Davis campaign, the Hearst Nationwide Poll at just about this stage of the game reported about twice as many votes for Coolidge as for Davis, for example.

Another strange phenomenon of this campaign, as we have commented several times before, is the great number of "switches" in sentiment that are taking place.

The Nationwide Presidential Poll shows that 98,996 persons who voted a Democratic ticket have decided to vote in favor of Hoover this year. And 63,124 former Republican voters have been won over to Smith. Truly, party lines are slackening considerably and the election gives every indication of being a close, exciting battle.

Almost every day one hears of dyed-in-the-wool Democrat changing his viewpoint, deciding to vote for Hoover; and of a staunch Republican to balance him, declaring himself in favor of Smith. Thus John J. Raskob, listed in "Who's Who" as a Republican, is now the chairman of Smith's campaign committee. Thus R. A. Owen, a former United States Senator, and a Democrat, is backing Hoover. Thus Nicholas Murray Butler, that constant member of the G. O. P., gives hints of bolting his party—no one knows just where he stands now. And J. R. Pally, of Hattiesburg, Mississippi, resigns his position in the Democratic ranks of his state to be able to vote for Hoover. Everything is in a state of ferment. Traditions are being broken. History is being made!

Big business men, heads of gigantic corporations are coming right out in the open and telling who they are going to vote for. Many of these, too, show a complete reversal of their usual political sympathies. Business men are supporting both parties and taking active parts in the campaign.

We do not know any more whether the "solid South" is to remain the "solid South," and states that have been Republican since this generation can remember, are now in the doubtful column.

Never has the situation been quite as strange. That is why political discussion, prophecy and interest is as prevalent now, in September, as

## Results of Nationwide Presidential Poll to Date

Hoover	559,806
Smith	499,122
Former Democrats Voting for Hoover	98,996
Former Republicans Voting for Smith	63,124

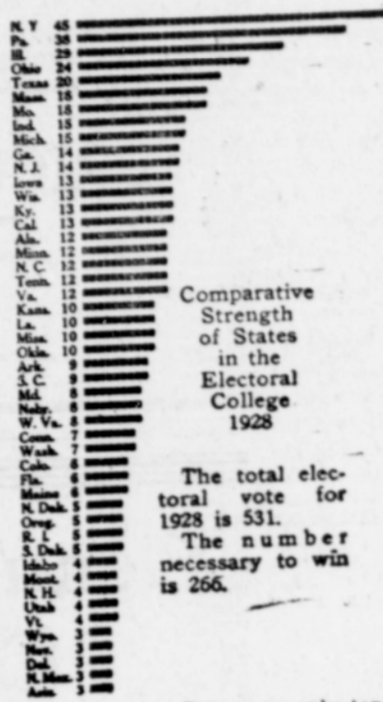
## Result of Straw Vote of Hearst Newspapers

Hoover	257,873
Smith	238,630

The New York Daily News Straw Poll gives 36,789 to Smith and 36,201 to Hoover. This is the closest of all straw votes and is the result of polls taken in New York State alone.

The Yonkers, New York, Herald, in taking a Straw Vote of Yonkers and nearby New York sections, finds a result to date of 3,428 for Smith and 2601 for Hoover.

The Farm Journal is also conducting a Straw Vote, this one National in scope. The latest results, printed in their September issue, gives 12,742 to Hoover and 11,405 to Smith.



## TOP OF OLD BUILDING CAVES IN ON SUNDAY

Rumors of dire disaster spread here Sunday to the effect that the top part of the old building which housed the Archway pool hall at the corner of Third and Main streets had toppled into the street. Just how many people were killed or injured the rumor did not indicate.

The truth of the matter is that the top of the building did do a little toppling, but not into the street. The building is being torn down and the top was so weakened by work done Saturday that it caved in. No one was in the building and no damage resulted.

Fearing that the facade of the structure might fall into the street of its own accord, Fire Chief Smitson diverted traffic through Main street while he took a pike pole and pushed the top portion of the front of the building into the street.

## OLD ROUTE OF HIGHWAY DISPLEASES COMMISSION

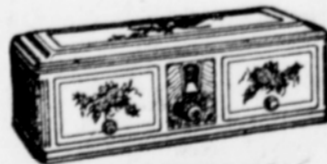
From Springfield to Cogswell hill, a distance of about seven miles, the old route of the McKenzie highway must be completely changed under the new plans for rerouting the highway, according to word received this week by officers of the Lane county chamber of commerce.

McKenzie residents have objected to the new route of the highway because, they state, it cuts up their farms. By following the old route, it is said, much of this damage may be averted.

T. J. Flippin, Jr., secretary of the county chamber, presented the compromise to the state highway commission last week, but was told that the old route was not practicable and that plans for rerouting would have to remain very much as they are at present.

CALL AND SEE Dr. N. W. Emery on prices on plates and other work. ☎

## Kolster and Philco Radios



WM. RODENBOUGH GARAGE Dealer

533 Main St. Phone 95

## 56 STORES C.J. Breier Co IN THE WEST

605 - 609 Willamette St. Eugene, Oregon

### Pants for Men and Young Men

This low price group carries cotton cords, mole-skins, wool mixtures, flannels, dress novelties, conservative fancies and high-grade work pants. Pin stripes in grays and blues. **\$1.98**

In this group you will find twists in brown and tan mixtures, worsteds in mostly dark browns and grays, some flannels in light shades of gray and blonde—some with rayon colored stripes. **\$2.98**

Here's a saving of about \$2 to \$3 on the pants in this group. Heavy all-wool work pants in grey mixtures. Some twists and flannels. All-wool novelties, all-wool worsteds, dark colors. **\$3.98**

Mostly high-grade worsteds and all wools, in browns, grays and tans. Collegiate cloths in twists with bright rayon stripes. Also more conservative twists for older men. **\$4.98**

## Calvin Coolidge Proves Himself A True Marksman



Recent stories of President Coolidge's marksmanship have been arousing admiration for the president in all quarters of the country. Here he is shown at Brule, Wis., in the act of shooting over clay pigeons. He scored twenty-nine out of thirty-seven pigeons.

## PHEASANT SEASON WILL BE FROM OCT. 15 TO 31

Open season on China pheasants will begin October 15 and continue until October 31, both dates inclusive.

Hunters expect to find many birds this year, since a large number of pheasants were liberated during the summer and the warm dry weather proved ideal for their growth.

The bag limit is four birds in one day or eight in any seven consecutive days, provided that not more than one female pheasant is killed in any

seven consecutive days. Sportsmen state that the country especially around Brownsville is full of pheasants. Fields around this city are also predicted to supply plenty of game for local gunners.

## OLD CAPTAIN AUTHOR OF STORY IN BIG MAGAZINE

Captain Eustace Maude, for many years a resident of this vicinity, now at Mayne Island, Vancouver, B. C., is the author of an article in the September Atlantic Monthly, according to word received here by relatives.

An editorial in the Daily Province newspaper of that place commends the account highly. The story deals with a trip of 97 days in which the captain traveled 500 miles in a 25-foot boat. At this time he was 77 years of age.

He is well known by many of the older residents here.

# J.C. PENNEY Co.

A NATION-WIDE INSTITUTION

"where savings are greatest"

942 Willamette St., Eugene, Oregon.

# Pay Cash!

Save Money and Be Happy

Shopping here is a sure-cure for those First-of-the-Month "Credit Blues." You Pay Cash and therefore can face the "First" of each month with no fear of unpaid bills or installment charges. Paying cash makes you a shrewder judge of values, too, and curbs unnecessary purchases.

Yes! It Pays to Pay Cash.

# SPECIAL BARGAIN OFFER

Until October 31, 1928

By Mail

The Daily Oregonian, 1 year	} Both for \$5.50
The Springfield News, 1 year	
Daily and Sunday Oregonian	} Both for \$7.30
The Springfield News, 1 year	

THE TWO BEST NEWSPAPERS IN OREGON FOR YOU TO SUBSCRIBE FOR AND READ—GIVES YOU ALL THE NEWS BOTH LOCAL AND NATIONAL.

SAVES YOU NEARLY 50% ON REGULAR SUBSCRIPTION PRICES OF BOTH NEWSPAPERS.

NEW SUBSCRIPTIONS WILL START WHENEVER YOU DESIRE AND PRESENT SUBSCRIPTION WILL BE EXTENDED ONE YEAR.

**Do Not Miss This Bargain Offer Come in Today!**

### OPPORTUNITY DAYS

AT

## Samuels Quitting Business Sale

Still Going On—

Don't Miss It!

A LOT OF SPECIALS IN EVERY DEPARTMENT OF THE STORE THIS WEEK

## Samuels Furniture & Variety Store

Elks Bldg. Eugene, Or.