

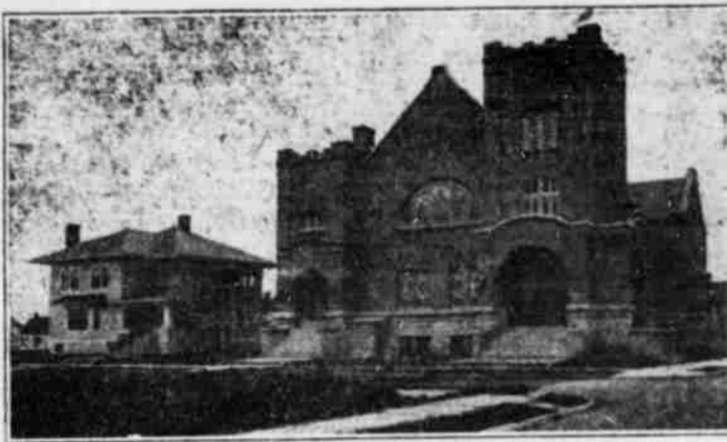


STAND IN HER GOOD FAVOR
 by buying her our ice cream. This ice cream has gained its reputation of being the best because we have always used the best quality of ingredients. Fresh fruits, rich cream and eggs are what make real ice cream so creamy and delicious.

EGGIMANN'S
 "A Good Bakery"

SUMMONS
 In the Circuit Court of the State of Oregon for the County of Lane. Guy Mathes, plaintiff vs. Rosa Mathes, defendant.
 To Rosa Mathes, the above named defendant:
 In the name of the State of Oregon, you are hereby required to appear and answer the complaint filed

against you in the above entitled suit and Court on or before the 28th day of July, 1921, said date being more than six weeks from the date of the first publication of this summons and being the time prescribed for such appearances by you in the order of publication of the summons herein entered of record, and if you fail so to appear and answer for want



METHODIST EPISCOPAL CHURCH
 REV. T. D. YARNES, Pastor

Sunday School - - - - - 9:45 a. m.
 Preaching Service - - - - - 11:00 a. m.
 Epworth League - - - - - 7:00 p. m.
 Evening Service - - - - - 8:00 p. m.
 Mid-Week Service, (Thurs.) - - - 7:30 p. m.

THIS IS AN ALL-THE-YEAR-'ROUND INSTITUTION
 AND WE INVITE YOU TO ENJOY ITS MINISTRATIONS

Vacation Trips

Now's the time to plan a visit back east to your old home town, or an outing to your favorite resort by the seashore or in the mountains.

Back East

Low Round Trip Tickets
 THROUGH
California
 are now on sale at
Reduced Fare

Final return limit round trip tickets, three months from sale date not exceeding October 31st. Stop-overs permitted and choice of routes. On your back east trip, see Crater Lake, Lake Tahoe, Yosemite, Sequoia National Park, Carribo Gorge—a grand and highly colored canyon seen from the car windows—or the Apache Trail and Roosevelt Dam.

WEEK END AND SEASON EXCURSION TICKETS
 are now on sale to:

Tillamook County Beaches

A particularly attractive trip across the Coast Range Mountains. These beaches include Rockaway and Garibaldi Beach Resorts, Neah-Kah-Nie, Manzanita and Bayocean.

Daily train leaves Portland Union Station 8:15 A. M.

Special week-end train leaves Portland Union Station Saturday 12:45 P. M.

Electric train leaves Portland, 4th and Stark Sts., 1:15 P. M., connecting with week-end train at Hillsboro. No baggage handled on electric train.

New Eastbound

One-way Fares
 THROUGH
California
 Will be in effect
June 10 and daily, thereafter

Newport
 A delightful seashore resort on Yaquina Bay and the Pacific Ocean. An ideal place for the family. Large natatorium and salt water baths—various forms of amusement.

Daily Train Service

"Oregon Outdoors," our new Summer booklet, graphically describes the different resorts in Western Oregon, and includes hotel and camp information. Copy free on request.

Mountain and Other Resorts

Detroit (Breitenbush Hot Springs, Mt. Jefferson Country)—Tickets now on sale.

McCredie Hot Springs—Tickets now on sale.

Josephine County Caves—Tickets now on sale.

Crater Lake (a lake in the extinct crater of a volcano)—Tickets on sale July 1st.

Shasta Mountain Resorts—Tickets on sale, daily, on and after June 10th.

Yosemite National Park—Tickets on sale, daily, on and after June 10th.

For particulars as to passenger fares, routes, train schedules or sleeping car reservations, inquire of any ticket agent of

SOUTHERN PACIFIC LINES

JOHN M. SCOTT,
 General Passenger Agent

Compare This Solid 8% Investment With Others

Compare the facts relative to the 8% Gold Notes of Mountain States Power company with other really sound investments brought to your attention.

The advantage of investing direct in successful properties that you can see is one that has already appealed to many of our citizens.

This investment is safe. It is backed by ample assets and earning power. The Company is a large one and is growing steadily because it supplies the light, heat and power needed by public and industry. It does a good business even in dull times.

Substantial cash returns are received by the investor by cashing a coupon at his bank every six months.

Ask for full Details and Illustrated Literature

Mountain States Power Company

H. M. Byllesby & Company
 Fiscal Agents
 Byllesby Engineering and Management Corporation
 Engineers and Managers

thereof the plaintiff will apply to the Court for the relief in the complaint demanded and prayed for, to wit: For a decree of the Court dissolving the marriage contract and bonds of matrimony now existing between you and the plaintiff on the grounds of desertion for more than one year and for the care and custody of the minor children, to wit: Lucretia Mathes, Geneva Mathes, Leslie Mathes, and Lenora Mathes and for such other relief as to the Court shall seem meet.

This summons is served upon you by publication thereof pursuant to an order of the Honorable G. F. Skipworth, judge of the above Court made and entered of record on the 13th day of June 1921 ordering that this summons be published once a week for six successive weeks in the Springfield News and the date of the first

publication will be June 16th, 1921, and of the last publication will be the 28th day of July 1921.

FRANK A. DePUE, attorney for Plaintiff, residence and postoffice address, 5th and Main Sts., Springfield, Oregon.

Date of first publication, June 16, 1921
 Date of last publication July 28, 1921

Why Suffer from Rheumatism?

Do you know that nine out of every ten cases of rheumatism are simply rheumatism of the muscles of chronic rheumatism, neither of which require any internal treatment? The pain may be relieved by applying Chamberlain's Liniment, which makes sleep and rest possible, and that certainly means a great deal to anyone afflicted with rheumatism.

"IT ALWAYS PAYS TO BUY AT GRAY'S"

Where Quantity Buying Counts Four Busy Stores

- High Grade Jar Rubbers, 4 doz. 25c
- Good Blend Flour, 49 lbs. \$1.75
- Full Cream Cheese, lb. 25c
- Fancy Assorted Cookies, lb. 25c
- Libby Corned Beef, 2 cans 35c
- Apricots in Syrup 17c
- Carnation Milk, 3 cans 35c
- Chicken Rolled Oats, lb. 4½c
- Mill Run, 80 lb. sk. \$1.39
- Royal Ann Cherries, per lb. 5c
- Bananas, per lb. 12½c



Cigarette

No cigarette has the same delicious flavor as Lucky Strike. Because Lucky Strike is the toasted cigarette.

