



TUBS OF PURITY
AND NURISHMENT

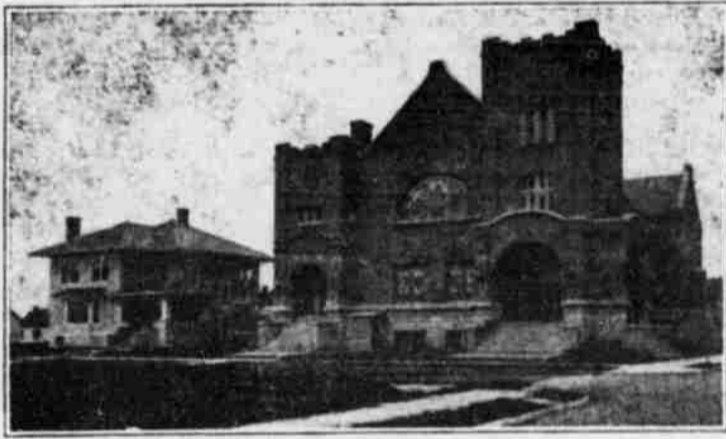
We know that our ice cream is all that ice cream should be. Our patrons are more than satisfied regarding the quality, otherwise the consumption would not be as great as it is. We are constantly on the jump filling the orders. Are you supplied?

EGGIMANN'S
"A Good Bakery"

SUMMONS

In the Circuit Court of the State of Oregon for the County of Lane.
Roy Mathes, plaintiff vs. Rosa Mathes, defendant.
To Rosa Mathes, the above named defendant:
In the name of the State of Oregon, you are hereby required to appear and answer the complaint filed

against you in the above entitled suit and Court on or before the 28th day of July, 1921, said date being more than six weeks from the date of the first publication of this summons and being the time prescribed for such appearances by you in the order of publication of the summons herein entered of record, and if you fail so to appear and answer for want



When
RELIGION GOES ON A VACATION
It usually takes
THE DEVIL AS A TRAVELING COMPANION
Sermon Subjects, Sunday, June 26.
11:00 A. M. — "All-the-year-round Religion."
8:00 P. M. — "The Devil's Test of Religion."
Everybody Welcome

Vacation Trips

Now's the time to plan a visit back east to your old home town, or an outing to your favorite resort by the seashore or in the mountains.

Back East New Eastbound

Low Round Trip Tickets
THROUGH
California
are now on sale at
Reduced Fare

One-way Fares
THROUGH
California
Will be in effect
June 10 and daily, thereafter

Final return limit round trip tickets, three months from sale date not exceeding October 31st. Stop-overs permitted and choice of routes. On your back east trip, see Crater Lake, Lake Tahoe, Yosemite, Sequoia National Park, Carriazo Gorge—a grand and highly colored canyon seen from the car windows—or the Apache Trail and Roosevelt Dam.

WEEK END AND SEASON EXCURSION TICKETS
are now on sale to:

Tillamook County Beaches

A particularly attractive trip across the Coast Range Mountains. These beaches include Rockaway and Garibaldi Beach Resorts, Neal Kah-Nie, Manzanita and Bayocean.

Daily train leaves Portland Union Station 8:15 A. M.

Special week-end train leaves Portland Union Station Saturday 12:45 P. M.

Electric train leaves Portland, 4th and Stark Sts., 1:15 P. M., connecting with week-end train at Hillsboro. No baggage handled on electric train.

Newport

A delightful seashore resort on Yaquina Bay and the Pacific Ocean. An ideal place for the family. Large natatorium and salt water baths—various forms of amusement.

Daily Train Service

"Oregon Outdoors," our new Summer booklet, graphically describes the different resorts in Western Oregon, and includes hotel and camp information. Copy free on request.

Mountain and Other Resorts

Detroit (Breitenbush Hot Springs, Mt. Jefferson Country)—Tickets now on sale.

McCredie Hot Springs—Tickets now on sale.

Josephine County Caves—Tickets now on sale.

Crater Lake (a lake in the extinct crater of a volcano)—Tickets on sale July 1st.

Shasta Mountain Resorts—Tickets on sale, daily, on and after June 10th.

Yosemite National Park—Tickets on sale, daily, on and after June 10th.

For particulars as to passenger fares, routes, train schedules or sleeping car reservations, inquire of any ticket agent of

SOUTHERN PACIFIC LINES

JOHN M. SCOTT,
General Passenger Agent

**Advertising
A Safe 8% Investment**

Today anyone who wants to reach large numbers of people must advertise - must use the newspapers and the mails and must do so persistently.

Customer-ownership means ownership by many. We should like to have every person we serve become an investor in the Company.

An electric light and power or gas Company, serving growing communities, must continually add to its plant capacities and distributing systems in order to meet growing demands for service. It requires new capital as long as it grows. That is why we have a splendid 8% investment for you.

Like many other business institutions we have found that through advertising we can obtain better results at less expense than otherwise. Advertising helps us to make numbers of new security owners of the Company, as well as to economically finance improvements and extensions.

Ask for Complete Information

Mountain States Power Company

H. M. Byllesby & Company
Fiscal Agents
Byllesby Engineering and Management Corporation
Engineers and Managers

thereof the plaintiff will apply to the Court for the relief in the complaint demanded and prayed for, to wit: For a decree of the Court dissolving the marriage contract and bonds of matrimony now existing between you and the plaintiff on the grounds of desertion for more than one year and for the care and custody of the minor children, to wit: Lucretia Mathes, Geneva Mathes, Leslie Mathes, and Lenora Mathes and for such other relief as to the Court shall seem meet.

This summons is served upon you by publication thereof pursuant to an order of the Honorable G. F. Skipworth, judge of the above Court made and entered of record on the 13th day of June 1921 ordering that this summons be published once a week for six successive weeks in the Springfield News and the date of the first

publication will be June 16th, 1921, and of the last publication will be the 28th day of July 1921.

FRANK A. DePUE, attorney for Plaintiff, residence and postoffice address, 5th and Main Sts., Springfield, Oregon.

Date of first publication, June 16, 1921
Date of last publication July 28, 1921

Why Suffer from Rheumatism?

Do you know that nine out of every ten cases of rheumatism are simply rheumatism of the muscles of chronic rheumatism, neither of which require any internal treatment? The pain may be relieved by applying Chamberlain's Liniment, which makes sleep and rest possible, and that certainly means a great deal to anyone afflicted with rheumatism.

"IT ALWAYS PAYS TO BUY AT GRAY'S"

**You Save When You Buy
at Gray's Cash & Carry**

- A good Broom 39c
- Fancy Blend Flour, tried and true, 49 lb. sack \$1.70
- Nabiscos 10c
- Sugar, 10 lbs. 75c
- Strained Honey, per lb. 25c
- Dandy Royal Ann Cherries, per lb. 5c
- Cocoa, per lb. 15c
- Jam, 2 cans 25c
- Corn Flakes 10c



Cigarette

To seal in the
delicious Burley
tobacco flavor.

It's Toasted

