

# THE SPRINGFIELD NEWS

Published Every Thursday at Springfield, Lane County, Oregon, by

Sam H. Tyler, Editor. TYLER & FREELAND H. B. Freeland, Adv. Mgr.

Entered at the Postoffice at Springfield, Oregon, as Second-class Matter, February 24, 1903.

SUBSCRIPTION RATES:	
One Year	\$2.00
Six Months	\$1.00
One Year, When Paid In Advance	\$1.75
Three Months	50c
Single Copy	5c

## WHAT ARE YOU PAYING FOR SUGAR?

More than 7,500,000,000 pounds of cane sugar, valued at about \$686,000,000, were imported into the United States during the fiscal year ending June 30th. This was an increase of nearly 2,000,000,000 pounds over last year, or almost 40 per cent. Meanwhile the price to the consum-

er was more than doubled. Here is where the law of supply and demand was reversed, and the chief reasons for the reverse were the interference of the attorney general who fixed the price of the Louisiana crop, and the stubborn refusal of the president to purchase the Cuban crop at low prices when he had the opportunity to do so.

And yet Wilson and Palmer say they are trying to reduce the cost of living!

## Chamberlain's Colic and Diarrhoea Remedy

This is unquestionably one of the most successful medicines in use for bowel complaints. A few doses of it will cure an ordinary attack of diarrhoea. It has been used in nine epidemics of dysentery with perfect success. It can always be depended upon to give prompt relief in cases of colic and cholera morbus. When reduced with water and sweetened it is pleasant to take. Every family should keep this remedy at hand.

## NOTICE OF MEETING OF COUNTY BOARD OF EQUALIZATION

Notice is hereby given that on the second Monday in September (being the 13th day thereof,) 1920, the County Board of Equalization for Lane County will meet at the Court House in Eugene and publicly examine the

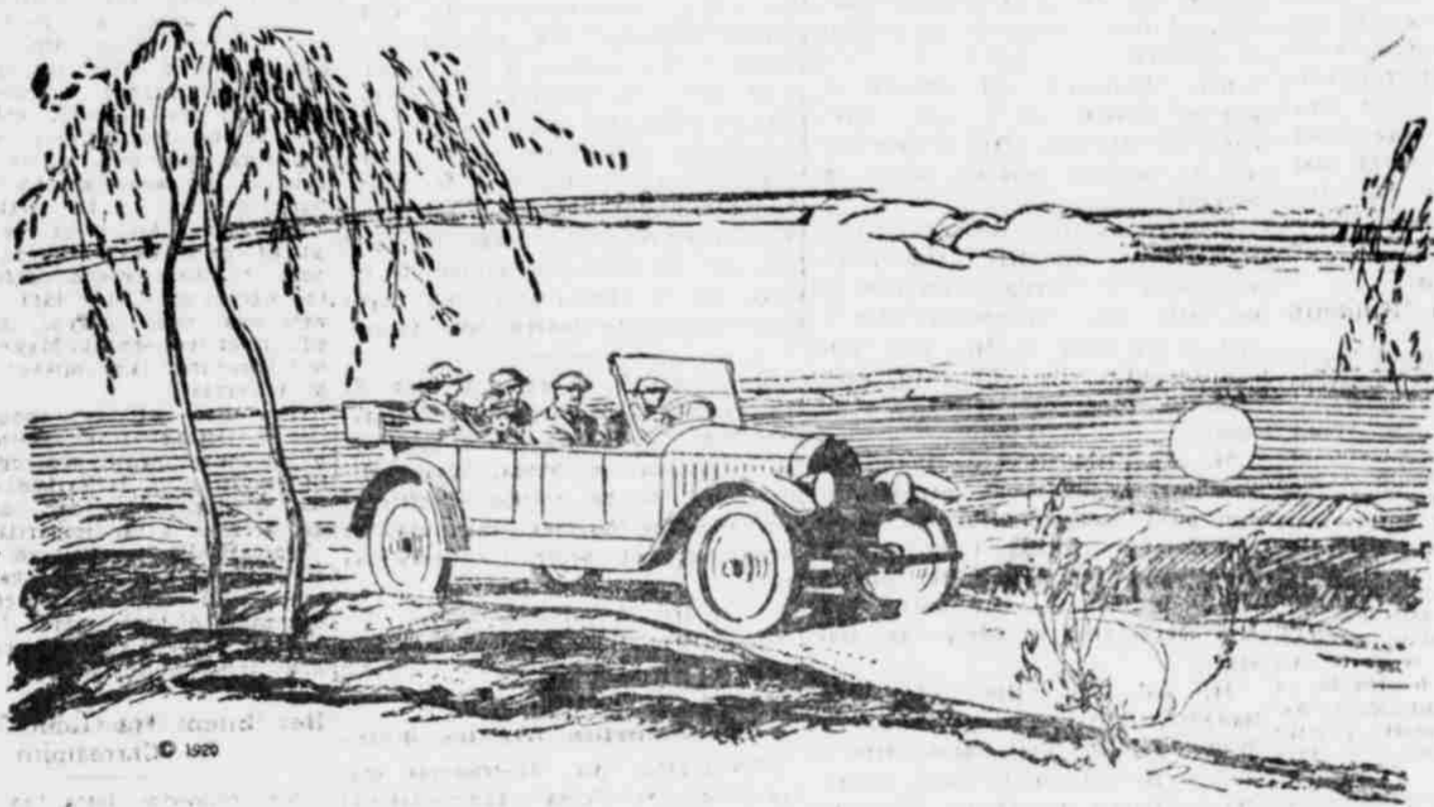


## IT'S MORE THAN GOOD

It is positively delicious. Everyone who eats our ice cream says that. And why not? It is made from the purest materials in a sanitary factory in all flavors. Order some today in bulk or bricks and see for yourself. Certainly we deliver it.

## EGGIMANN'S

"A Good Bakery"



# Now the whole family can go out on a Summer evening

**T**HE women should certainly be thankful for the automobile. It has given them a chance to see a lot more of their husbands.

II

But it has done a great deal more than that.

It has brought people closer together, given them new interests, swept away old prejudices.

What affects one man now generally affects a good many of his neighbors in the same way. And they have a better chance to get together and talk things over.

III

It's had its effect on the tire business.

When automobiles were new people were willing to buy any kind of a tire. Now

they're beginning to insist on *knowing what they are getting*.

And the more they insist, the better it will be for us.

IV

We want our customers to know what they are getting.

That's why we represent U. S. Tires—so there will be *no doubt* about it.

Whatever the size of your car, you know that the U. S. Tire you put on it is the *best kind of tire* its makers know how to make.

U. S. Tires are guaranteed for life, *without any limitation* of mileage.

That ought to mean something to the man who has thought about tires.

Select your tires according to the roads they have to travel:

In sandy or hilly country, wherever the going is apt to be heavy—The U. S. Nobby.

For ordinary country roads—The U. S. Chain or Usco.

For front wheels—The U. S. Plain.

For best results—*everywhere*—U. S. Royal Cords.



ROYAL CORD—NOBBY—CHAIN—USCO—PLAIN

# United States Tires Springfield Garage

Assessment Rolls and correct all errors in valuation, description or qualities of lands, lots or other property assessed in said rolls, at which time and place it shall be the duty of all persons interested to appear.

Dated August 7, 1920

HERBERT E. WALKER,  
County Assessor.

AUG 19—SEPT 9—

## NOTICE FOR PUBLICATION.

Department of the Interior, U. S. Land Office at Roseburg, Oregon, July 21, 1920.

Notice is hereby given that Nelson Bush, of Marcola, Oregon, son and one of the heirs at law of Flora H. Bush, deceased, who, on June 5, 1916, made Homestead Entry Serial No. 076599, for Lot 1, Section 8, Township 16 South, Range 1 West, Williams Meridian, has filed notice of intention, to, make final three year proof, to establish claim to the land above described, before E. O. Immel, United States Commissioner, at Eugene, Oregon, on the 1st day of September, 1920.

Claimant names as witnesses: Clayton Arhel, of Marcola, Oregon; Amy Polby, of Marcola, Oregon; Herman Ritter, of Marcola, Oregon; Charles Adams, of Marcola, Oregon.  
W. H. CANON,  
Register.

July 29-Aug. 25, 20

## NOTICE TO CREDITORS

Estate of Marijnda Hileman, Deceased.

Notice is hereby given that Richard Hileman has been by the County Court of the State of Oregon, in and for Lane County, duly appointed administrator of the estate of Marijnda Hileman, deceased.

All persons having claims against said estate are hereby notified to present the same, duly stated and verified, at the law office of A. E. Wheeler, in Eugene, Oregon, within six months from this 12th day of August, 1920.

RICHARD HILEMAN,  
Administrator.  
A. E. Wheeler, Attorney, Sept. 9

## GAS AND ACID STOMACH

And Other Stomach Troubles Relieved in Two Minutes, by taking a heaping teaspoonful of JOTO in a glass of hot water. Absolutely harmless.  
Sold by All Druggists



## THE UNIVERSITY OF OREGON

—is maintained by the state in order that the young people of Oregon may receive, without cost, the benefits of a liberal education.

The University includes the College of Literature, Science and the Arts, the Graduate School, the School of Physical Education, and the professional Schools of Law, Medicine (at Portland), Architecture, Commerce, Journalism, Education and Music.

High standards of scholarship are made possible by an able faculty, well equipped laboratories and a library of nearly 100,000 volumes.

Supervised athletics are encouraged and every attention given the health and welfare of the students.

With a heightened confidence gained by the recent expression of public support, the University is now entering upon an era of large development and extended usefulness.

For a catalogue or for any information, address:

THE REGISTRAR  
University of Oregon  
Eugene, Oregon