



BIGGER LOCATION, MORE SERVICES. The Asian Health & Service Center's new 30,500-square-foot facility (bottom photo) will be located in the Lents neighborhood of Portland. After construction of the building is complete in 2018, the center will move from its current 12,000-square-foot building at 3430 S.E. Powell Boulevard (top photo). (Images courtesy of the Asian Health & Service Center)

AHSC to open new facility by 35th anniversary

Continued from page 10 stop.

Included in the building's design are treatment rooms for both behavioral and physical healthcare, the Asian Cancer Resource and Support Center, a healing garden, multipurpose small group rooms for adult classes and therapeutic group programs, and a 6,000-square-foot multipurpose hall that will be used for health education, exercise classes, AHSC's ethnic meal program for seniors, social gatherings, and cultural community events.

The organization anticipates a short-term increase of 20,000 encounters per year in the new facility, which will be built to be able to accommodate more than 90,000 service encounters per year to meet growing program demands.

AHSC expects to break ground on the new building in early 2017, with completion expected in 2018. According to

Holden Leung, executive director of AHSC, construction of the building will take approximately one year. Leung hopes to be able to hold the grand opening of the new building before AHSC's 35th anniversary in 2018.

The organization is currently holding a capital campaign to raise \$6 million for the new facility and so far has achieved 63 percent of its goal. A fundraising event, "A Bridge for New Generations" charity gala hosted by the *Portland Chinese Times*, is scheduled for Monday, May 9 from 6:00pm to 9:00pm at Wong's King Seafood Restaurant, located at 8733 S.E. Division Street in Portland.

To learn more, or to make a contribution to the capital campaign, call (503) 872-8822 or visit <www.ahscpxd.org>. For more information about the charity gala, call (503) 380-8788 or visit <www.portlandchinesetimes.com/index.php>.

"Beyond the Gate" highlights Portland's hidden history

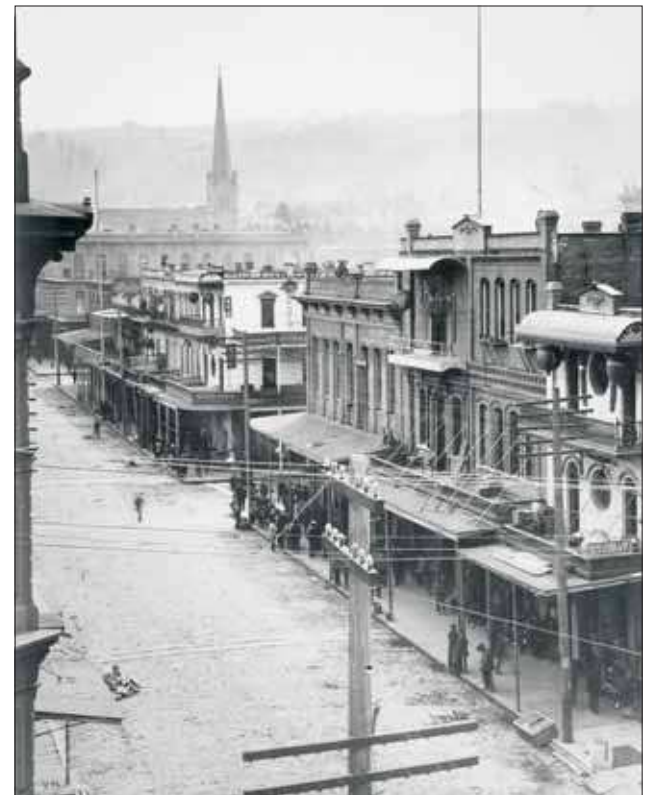
Continued from page 12

railroad track, logged, and worked in factories, mills, canneries, and as domestic workers.

Despite the Chinese exclusion laws and attempting to persevere in the face of violent racism, despite being largely excluded from history books, Chinese Americans have contributed a wealth of history, knowledge, and hard work to America. This exhibit focuses attention on who they were, what they did, and how they carved out their own thriving community in the fertile Willamette Valley city.

Who gets to write history? Who decides what's recorded and deemed important enough to teach to future generations? Everyone has a story, and "Beyond the Gate: A Tale of Portland's Historic Chinatowns" shares some that are an integral part of our history — as Portlanders, as Oregonians, as Americans, as humans.

The Oregon Historical Society is devoted to bringing to life the variety of experiences that have helped form our state. From the impressive archives and extensive collections of historic photographs, to the community outreach and regular events, OHS



TALE OF TWO CHINATOWNS. "Beyond the Gate: A Tale of Portland's Historic Chinatowns," currently on display at the Oregon Historical Society Museum, focuses on Portland's Old Chinatown (1850-1905) and New Chinatown (1905-1950). Before 1905, Portland's Chinatown was located on S.W. Second Avenue. Pictured is Old Chinatown, looking south on Second Avenue from Washington Street, circa 1885. (Photo courtesy of the Oregon Historical Society, #bb013816)

shares the stories that aren't always told. This is our history, and it's important. Be sure you take some time to check out the exhibit before it closes — it's well worth it.

"Beyond the Gate: A Tale of Portland's Historic Chinatowns" is on view through June 21. The museum, which is located

at 1200 S.W. Park Avenue in Portland, is open daily — 10:00am to 5:00pm Monday through Saturday and noon to 5:00pm on Sunday. Admission to the museum is free for Multnomah County residents and Oregon school groups. For more information, call (503) 222-1741 or visit <www.ohs.org>.

Timely, relevant exhibit on display at OHS

Continued from page 13

were officially put into law with The Page Act in 1875, which was followed-up with the Chinese Exclusion Act of 1882. The 1892 Geary Act extended the Chinese Exclusion Act for an additional 10 years, then the 1902 Scott Act extended Chinese exclusion laws indefinitely. In 1943, the Chinese Exclusion Act was finally repealed with The Magnuson Act.

While viewing the display, don't forget to stop and look at Moo Lung, a beautiful dragon that is a symbol of the social and cultural wealth of Chinese-American contributions that was shipped from China at great expense and travelled extensively around the United States. Moo Lung was a way for Chinese Americans to show a presence in the community by appearing in parades and events — including Seattle's "China Day" event held as part of the 1909 Alaska-Yukon-Pacific Exposition — with the impressive creation. "Majestic" is an excellent description for this very old and culturally precious work of art.

The Oregon Historical Society has done it again — presented us with a timely and

relevant educational display. Hopefully visitors to the museum leave with more compassion and understanding for those who have the courage to leave their homeland to move to this country. Acceptance and welcoming newcomers is what being American is supposed to be all about. In addition, the rich combination of peoples from every corner of the planet is what truly makes our country great.

"Chinese American: Exclusion/Inclusion" is on view through June 1. Also featured is a parallel and complementary second display, "Beyond the Gate: A Tale of Portland's Historic Chinatowns," which opened in February and ends June 21 (see story on page 12).

The Oregon Historical Society Museum is located at 1200 S.W. Park Avenue in Portland. The museum is open daily — 10:00am to 5:00pm Monday through Saturday and noon to 5:00pm on Sunday. Admission is free for Multnomah County residents and Oregon school groups. For more information, call (503) 222-1741 or visit <www.ohs.org>. To learn more about the travelling exhibit, visit <www.chineseamerican.nyhistory.org>.

Managing diabetes makes a huge difference.

It's not always easy to manage diabetes, but I keep trying by taking it one day at a time.

For more information, please call 1-800-860-8747 or visit www.ndep.nih.gov.

A joint program of the National Institutes of Health and the Centers for Disease Control and Prevention.

一圖千字

STUNNING PHOTOGRAPHY

WEDDINGS
SENIORS
BABIES
PREGNANCY
PORTRAITS
FUNERALS

LANDIS.PHOTOS@GMAIL.COM
JANLANDISPHOTOGRAPHY.COM
503•317•3759

FINANCE of AMERICA - MORTGAGE -

Tu Phan

Call for:
Refinances
Purchases
Offering:
FHA/VA/Conventional
Mortgages

NMLS # 1071
MLO # 7916
12550 S.E. 93rd Avenue
Suite 350
Clackamas, OR 97015
(503) 496-5718
<tphan@financeofamerica.com>
<www.financeofamerica.com>

The Asian Reporter Foundation's 2016 banquet airs on Portland Community Media on cable channels 29 & 30 in May:

- Tuesday, May 3 at 11:30am (Channel 30)
- Friday, May 6 at 1:00pm (Channel 30)
- Sunday, May 8 at 7:00pm (PCM channel 29)

For more information, call (503) 288-1515 or visit <www.pcmtv.org>.

Control your diabetes For Life.

ภาพควบคุมโรคเบาหวานเพื่อชีวิตของคุณ. Luôn Kiểm Soát Tiểu Đường. Để Suối Đời Sống Khỏe.

ควบคุมโรคเบาหวานเพื่อชีวิตของท่าน. Always Control Your Diabetes. Always Live Healthy.

당신의 당뇨병을 조정하십시오. 일생동안.

la pulea lou ma'i suka. Mu lou soifuaga. Pamahatan ang imyung diyabetis, upang manatiling malusog at masigla. 珍措生命控制血糖