

Special Course In Art At SOC

Ashland people who intend to enroll in the special Binney and Smith art workshop to be held at Southern Oregon college next week are advised to register for the three-day course as soon as possible, according to Marion Ady, associate professor of art.

Miss Ady said the class to be taught from 3 to 9 p.m. on June 24, 25, and 26 must be limited in size and she is anxious that art students who are interested reserve classroom space. The entire course will be taught by Cleo Heller, San Francisco.

Arrangements have been made to grant one unit of college credit for the workshop, Miss Ady said, and those intending to seek such credit should register officially at the college office. Those planning to audit the class may do so free of charge, but should enroll with Miss Ady.

Students are asked to bring a pair of scissors, an empty coffee can, paint cloths and two large water color brushes. All other materials will be furnished.

Council Refuses Student Request

The City Council met Tuesday evening in an unusually brief meeting and refused the request of Southern Oregon college students living in Vets village to patrol an unnamed street past the student housing.

It was pointed out that the street was on private property and not under police jurisdiction, and it was suggested that college authorities take action against speeders.

The council, in the meeting which lasted only 43 minutes, also approved the suggested \$4,000 special paving fund for repairing E. Main street and took up other routine business.

Jackson Included In Death Rate Rise

Death is riding Oregon highways this month, as accidents reported to the Secretary of State's office reflect sharp increases in traffic fatalities.

In seven days 10 people lost their lives in traffic, seven in only three accidents and three in "freak" mishaps, the department's traffic safety division reported Friday. Reports now in the mail are expected to bring the toll for the first two weeks to at least 15.

Multiple death accidents were responsible for the high toll to date. Four people were killed in Clatsop county on June 6, when the driver lost control of the car after attempting a left turn and it plunged through a guard rail into a river.

Two died in a Jackson county mishap when a truck trailer skidded to the left, and struck their car. A dramatic account of this accident was provided by a witness who could see what was going to happen, he said, about 25 yards before the collision.

He stopped, and ran back across the highway to the truck, and found the truck driver beside the wrecked car. "I asked if there was anyone who needed assistance," the witness later told police.

"I think they're dead," the driver replied.

"I also felt they were beyond help," the witness concluded.

Another freak accident killed one man when a gas tank fell from a truck on to a Josephine county highway and exploded under his car.

County Agent Discusses Cold Damage to Fruit, Vegetables

By C. B. CORDY

We had quite a frost the other morning and while it will be some time before we are sure of the extent of the damage, there was some damage which showed up immediately and is more easily assessed.

The pears were the biggest crop affected, and it looked for a while like the loss would be pretty severe. In many orchards the fruit was badly frozen and when the pears would be cut along about four or five o'clock in the morning, they were completely water soaked. As soon as the sun came up and thawed the pears out, the water soaking disappeared and now in many cases there are no signs that the fruit will be affected at all. Generally when fruit is frozen in that manner the fruit turns brown and the skin will be so badly blistered that the fruit is not marketable. This blistering generally occurs in a short time, and as it has not shown up yet it looks as though we may be safe. There is some flesh browning but only in spotted areas and principally in Bartlett although other varieties are affected somewhat. Temperatures ranging down to 26 and even lower were observed in some orchards, and as the temperature had been below the freezing point for a long time, it certainly is a wonder that we didn't have very heavy and extensive damage.

In driving around early last Thursday morning while things were still frozen, it was interesting to note the different conditions that affected the freezing. Of course, in those orchards where the heaters had been lit there was no freezing evident on the leaves or in the fruit. In adjoining orchards which were unheated the leaves had a coating of ice on them and the fruit was apparently frozen solid. Another condition which was almost as effective as orchard heating was the presence of irrigation water in the orchard. Here again the division was very clear cut. In the orchards under irrigation there was only a small percentage of fruit which was frozen, and in general there were drops of water instead of ice crystals on the leaves. In adjoining blocks where the soil was dry, especially where it had been cultivated, severe freezing conditions existed.

Another point which was interesting to observe was the influence of the sun on frozen tissues. The sun came up bright and warm the first thing in the morning, and the northeast corner of the tree thawed out almost immediately.

It has generally been assumed that if the sun shines on frozen tissues that either the action of the light or the quick thawing will very greatly increase the injury and that this injury could be reduced if the plant were shaded. This was not the case this year, as the parts of the trees which were exposed to the morning sun thawed immediately, and the remainder of the trees remained frozen for 1/2 an

hour or one hour longer. If the affect of the light or quick thawing were to increase the injury we should find a great deal more injury on the northeast corner of the tree. This does not seem to be the case, and what injury there is, is pretty uniformly distributed around the tree.

This is the kind of a freeze where wind machines would be of great value to growers, as their installation is permanent and it is not necessary to remove them from the orchard. Fortunately, we had one wind machine up in an orchard and the grower turned it on shortly after midnight, which was before freezing conditions. That should give us an excellent check regarding the amount of injury. So far that orchard is one of the few where injury has been observed, and the injury is in the immediate vicinity of the wind machine. Bartletts 350 feet away were rather badly affected, and Anjous as close as 200 feet away were showing injury. There were no Bartletts closer

than 350 feet, so we could not trace the injury on Bartletts. Along this same line, Bob Root had a rather cold orchard, so he got an airplane to fly over the trees to push down any warm air which might be present at higher altitudes. A very sensitive thermometer indicated that the action of this plane may have increased the temperature around 1/2 degree. While the airplane was actually flying over the orchard the fruit became water soaked, indicating that it had frozen. The reason for the ineffectiveness of the wind machine and the airplane is that there just wasn't any warm air upstairs to push down. It is under conditions like this where we just have to add heat to the atmosphere in order to protect against the frost.

Frost tender garden crops were also injured. Fortunately much of our commercial acreage

is planted up on rather frost free ground and pretty well escaped injury. Some commercial plantings and many home gardens really took a beating. Tomato plants are in very short supply, but I understand a truckload was brought in from Portland. Don't be hasty about pulling out frost affected plants, as in many

cases there are still many injured buds and these will develop new plants more quickly than if you pull them out and reset. Melons, cucumbers, squash, and corn can be replanted from seed now, and a good crop produced yet this fall. Pepper plants are available, and they also can be set out and a crop produced.



FREE personalized checks

Yours to enjoy... PERSONALIZED CHECKS from The First National Bank of Portland. Add prestige and friendliness to all your business transactions... and check and double-check your expenses. Your name and address printed FREE on regular personal checking account checks at First National.



SHOE PRICES ARE DOWN

From \$1.00 to \$2.00 a pair

BOOTS - ALL KINDS

\$11.95, 8 inch logger \$9.95

TAP SOLE

WORK SHOES - ALL KINDS

\$9.95, Vulcork Sole, \$8.95

CUSHION INSOLE

BIG ASSORTMENT OXFORDS

\$9.95 Values \$8.95

\$7.95 Values \$6.95

\$5.95 Values \$4.95

PERRINE'S

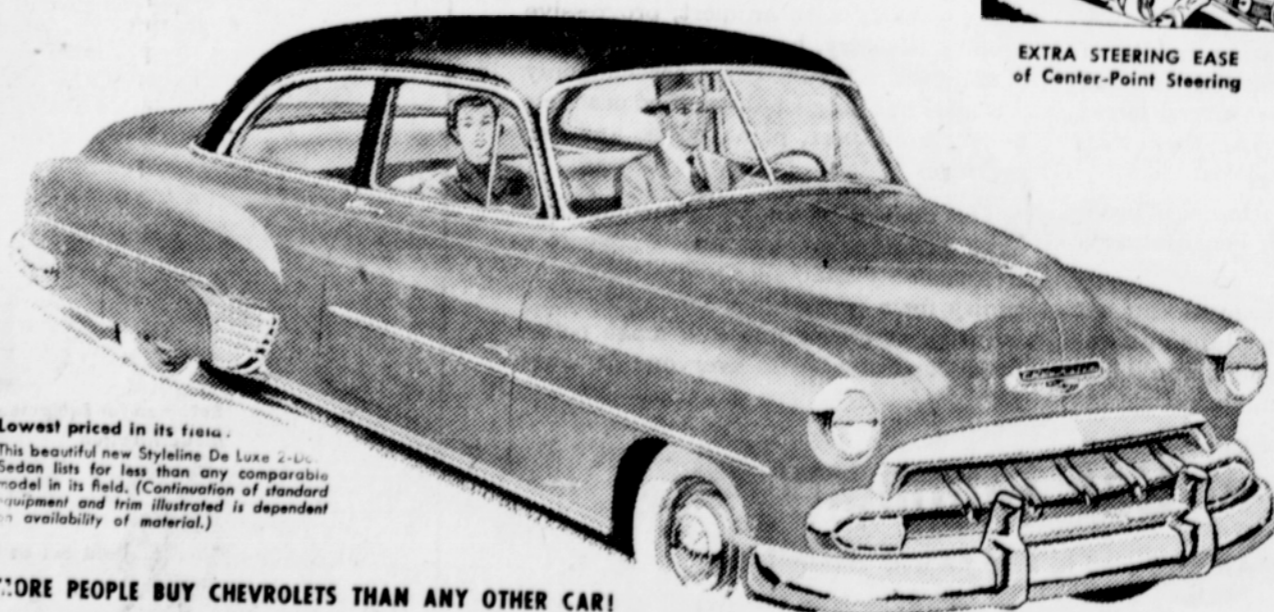
"On the Plaza"

Better Clothes for Less Money

You get all these
BIG-CAR EXTRAS
when you choose the
Lowest-Priced Line
in its field!



The Only Fine Cars PRICED SO LOW!



Lowest priced in its field.
This beautiful new Styleline De Luxe 2-Dr. Sedan lists for less than any comparable model in its field. (Continuation of standard equipment and trim illustrated is dependent on availability of material.)

MORE PEOPLE BUY CHEVROLETS THAN ANY OTHER CAR!

SELBY CHEVROLET COMPANY

(By Our Good Service You Will Know Us)

163 E. MAIN STREET

PHONE 4061



Invitations

To your wedding that you will be proud to send, they have that certain touch that spells refinement and good taste.

Announcements

The convenient, modern way when the time comes to tell.

Call for your free copy of Virginia Courtenay's Bride Booklet on social customs that should not be overlooked, before and after the wedding.



SOUTHERN OREGON
News Review

Bring in Your Scrap Metal
it's **P**ATRIOTIC
ROFITABLE

We Pay Cash
Oak St. Tank & Steel
Oak & "A" Sts. Ph. 2-1221



How to make good telephone service even better...

ways to be a friendly telephone neighbor

If yours is a party-line, your telephone neighbors will consider you a real friend if you'll keep these simple points in mind: Try not to tie up the line with lengthy conversations. That way you won't miss important incoming calls. Ask the youngsters to be considerate, too. When they remember that others may be waiting to use the line they're being good party-line neighbors. Always be sure you hang up properly after calling. These simple suggestions mean still better service... because they give every one a better chance to receive and make calls.

emergency calls may arise while you're on the line. If a telephone neighbor breaks in and explains the emergency, it's always thoughtful to hang up and complete your call later.



Pacific Telephone

GREYHOUND



More Travel Extras
No Extra Cost!

Yes, bigger value! More service to more places. Finest buses. Best drivers. Choose the travel leader... choose Greyhound!

6 Buses Daily to
LOS ANGELES

from ASHLAND
Only \$10.40 Plus Tax

Complete Service to All America
Phone 8181 Ashland Hotel
Frank Jones, Agent