

CLASSIFIED DEPARTMENT

BUSINESS & INVEST. OPPOR.

SERVICE STATION, 70x85 Bldg. House, Cafe, drive-thru Garage, Show-room, 4 Apts. all brick construction, 6 unit trailer court, parking space, Blacktop \$6500 Inc. Clear val. at \$78,000, \$10,000 down. Consider securities or trade. Ed Carlson, Hi-way 20, Rt. 2, Box 93, Umatilla, Ore.

Small mod. comp. bakery, coast town, liv. qtrs. att. Price \$12,000, 1/2 down. Terms Candace Baldwin Real Estate, Florence, Oregon.

SEEDS, PLANTS, ETC.

HARDY Montana-grown strawberry plants, all the best varieties of Ever-bearing and one crop. Write for Price list. McNeal Berry Nursery, Hamilton, Montana

MISCELLANEOUS

RENT BOOKS BY MAIL. Unique new reading plan. You pay no postage. Write: Happy Service, Walla Walla, Washington.

FOR SALE: Merchoon tandem band reaver 8" American Ballbearing stick. Comp. overhauled. J. L. Treat, Rte. 2, Box 207H, Kent, Wash.

FARM MACHINERY & EQUIP.

H. D. 19W Tractor, comp. overhauled. Rent or trade for cows. W. L. Blinn, Connell, Wn. Phone 2256, Quick sale.

FARMS AND RANCHES

FARM with or without stock, 23 A. deeded. In pasture, hay, plenty water, 30 A. permanent lease, 4-rm. home, Electricity to all bldgs. 600 cap. henhouse, barn, other bldgs., 6 cows, 14 hd. young stock, 20 pigs, machinery, truck, other equipment and more. Fred Snyder, Irrigon, Ore. Ph. Umatilla 216, TRHMS.

LIVESTOCK

FOR SALE—Registered Milking short-horn springer cows and 10-month-old bulls. Sherrill Turner, Amboy, Washington.

RABBITS & SKINS

RABBIT SKINS WANTED. Always top prices at BLUE MT. We take your skins all yr. round. SHIP BLUE MTN. WOOL & FUR CO., 1704 S. W. Front Ave., Portland, Oregon, AT 5715.

HELP WANTED—MEN

HIG DAILY INCOME SELLING CLOTHING. \$25.00 daily easy on this permanent job. DUPONT \*CRLON SUITS for men at \$32.50, your immediate commission is \$4.00. Also wool, River-ool summer weights and Rayons for men and women. Blacks and sportswear. Write McManis, P. O. Box 263, Seattle, Wn., for free kit. \*Copyrighted trademark—Dupont Acrylic Fiber.

POULTRY, CHICKS & EQUIP.

CHECKS—Pullets, straight run, Cockerels, Farmettes, Lads—Heavy Layers—large eggs. New Hampshire—layers and meat. White Rock—layers and meat. White Rock-Hamp, cross-fine fryers. Pullets make good layers. Red cockerels, prepaid to you \$7.00 per 100. Shank's Hatchery & Poultry Farm, Phone Needy T64, Hubbard, Oregon, Box 80.

CHINESE Goslings \$1.50 F.O.B. Pekin Ducklings 20c. Write Harold Warwick, Oakesdale, Wash.

BROAD-BREADED Bronze turkey poults. The finest of quality, pulchrum clean. Price at the hatchery or free delivery of lots 100 or more to your nearest Railway Express office. Phone Grandview, Wash., 5199 or 5195. RUSK'S RIVERVIEW HATCHERY.

Keep Posted on Values By Reading the Ads

NOW YOU TOO CAN HAVE THE PORTABLE "CLOCHE" GREENHOUSE

Made of top quality horticultural glass. 1952 Introductory Offer Complete set Size 20"x15". Ready to assemble 19.50

- 1 You can advance crop maturity from 30 to 60 days. 2 You can plant earlier with full protection from late frost. 3 You can grow crops year around. 4 Easily assembled or stored away. 5 The perfect answer for novice, amateur or commercial grower.

For full info. & literature call or write FLOYD R. YARBROUGH 5627 N. E. Simpson TR 2778 Portland, Oregon.

MASTER INSULT

John Randolph and Henry Clay once had a quarrel in the senate at Washington. For several weeks they did not speak, when one day they met on Pennsylvania avenue. Each saw the other coming up the side walk which was very narrow at that particular point, and each was meditating as to how far he would turn out for the other to pass. As Randolph came up he looked the grand old Kentuckian straight in the eye and, keeping the sidewalk, hissed: "I never turn out for scoundrels!"

"I always do," said Mr. Clay as he stepped politely into the mud and let Randolph have the walk.

Nickel Prospecting

In 1950, some 24,000 square miles of area—equivalent to a ten-mile-wide strip across the North American continent from Vancouver, B. C., to New York City—were prospected by International Nickel, and detailed surveys made of 3,215 square miles. In 1949, the area prospected was 20,000 square miles and, in 1948, 10,000 square miles. The number of feet of exploration drilling in Canada in 1950 was 260,127, or equivalent to a total depth of fifty miles, compared with 149,899 feet in 1949, and 147,093 feet in 1948.

SPORTSMAN'S HORIZON

By JIM RHODY

About Light Tackle

This is the report we promised some weeks ago here to pass on to all angler-readers who are interested in light bait-casting tackle. We have refrained from discussing the subject until we could give it a fair trial. We have given it that trial and are now ready to pass along our findings. Here they are: The sheer delight in using light tackle for bait-casting is sufficient in itself to dictate its selection.

Will Take More Bass

Over the long haul, this type gear will take more bass—and for these reasons: 1. The smaller lures practical with this gear strike the water with less disturbance and thus will not frighten away prospective strikes. 2. The little lures more closely simulate the fish life on which bass feed and foraging fish are more likely to strike them without too much examination and thus give the angler a greater percentage of "fish-on" experiences.

3. The light line and the compact lures make for easier coverage of wider, further waters and give the angler just that much more opportunity to get at distant bass. Too, the new, spinning-type lures which have gained most popularity resemble in great degree many fly-rod lures and thus afford the angler an almost double-weapon: fly rod lure and distance-casting impossible except with light-tackle casting, or spinning, gear.

Here Are The Facts

Anglers interested in light-tackle gear should know these facts: You don't have to be rich to get a light-tackle casting rod that will really handle light lures. The Phillips people, at Denver, are producing the lightest and we think the best, bamboo "light-tackle" casting rod obtainable. This rod, weighing only 3 and 3/4 ounces in the fly-rod field in weight and one can almost cast a fly with it. Yet, it has the backbone and the guarantee to do the job the plug-caster demands of it. This rod will actually handle small fly-rod lures, which we proved to our own satisfaction, if used with one of the light, tournament-type casting reels, and a 4 to 6-pound test line. In the matter of line, silk is undoubtedly the best. Of course, it is more expensive because it won't wear as long, but the ease of casting it and the added distance it gives, makes up for that disadvantage. The rod we mention comes in lengths from 5 to 6 feet, is in two sections and the price is in the range of any angler who is really desirous of owning the right gear for the right job.

Need Level Winder

As for the reel recommended, we don't mean that you have to get a real tournament reel without the level-wind attachment. Unless you are really an old-timer and grew up without a level-wind reel, you'd have the devil of a time laying the line levelly enough on the spool without a level-winder. Instead, the light-weight, narrow spool reels, will all do the job if you have one of the long rods light enough successfully to handle the light lures you will want to use.

The two most poisonous snakes in the world are said to be the tiger snake of Australia and the inland viper which is found on a small island off the coast of Brazil.

Wolf's Last Stand

The wolf has left an impressive record with mankind. He has come to symbolize courage, sagacity, power, ferocity, and ruthlessness. He is pictured as a demon, a villain, a scourge—or as a benefactor, a ruler, and a hero. Many knights of olden days and even rulers of men added his name to their own as a symbol of strength and power. The stories about the Anglo-Saxon hero Beowulf (the War Wolf), and the Timber Wolf Division of the present American Army attest to the respect mankind has for this wild dog's fighting ability.

Today, the wolf is making a last stand in the United States. He formerly ranged over most of the country and posed quite a problem for the early settlers. The battle between men and wolves is marked with stories of famous wolves that evaded capture and raided cattle herds for many years. The fight was a losing one for the wolf, and as formidable as wolves often appeared, only a few remain today.

In a sense, those states which still contain a few wolves are fortunate in that the presence of a wild wolf testifies that some unspoiled wilderness does remain.

River Bass

When fishing a river do not be deceived in thinking that the small-mouthed black bass is in the center of the pools. He is more generally found in the bubbly, foaming waters at the edges of the pool or eddy. Only suckers and chubs are found in the middle of the pool on most occasions. Neither do the river bass lay close to the surface, as many believe. The fish are invariably at or near the bottom, darting up to take the bait.

VIRGIL



IS IT OK IF I BRING MY DOG ALONG?



HE'S A POLICE DOG



TIE IT GOOD AND TIGHT—I COULDN'T STAND TO HAVE HIM STARVIN' AT ME



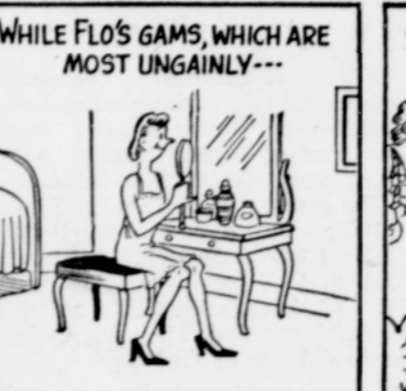
By Len Kleis

SUNNYSIDE



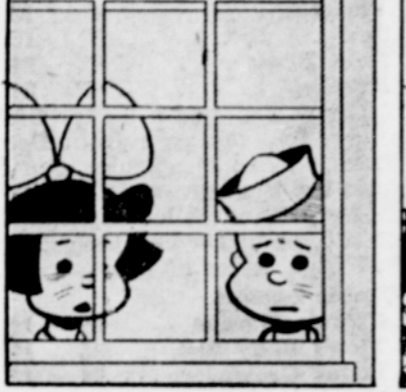
by Clark S. Haas

RIMIN' TIME



By POSEN

BESSIE



By NICK PENN

MUTT AND JEFF



By Bud Fisher

JITTER

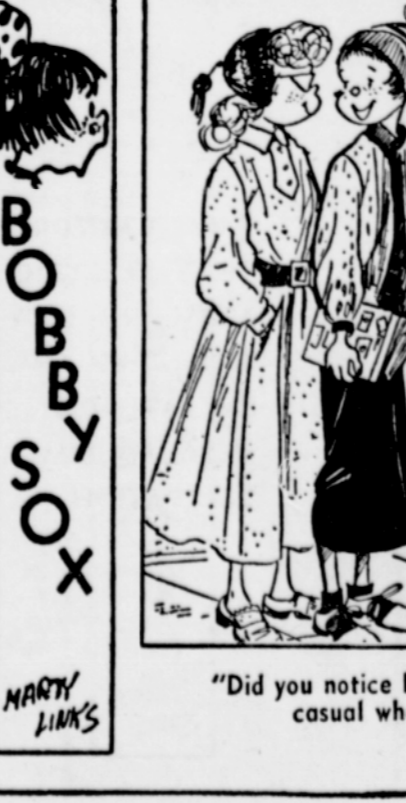


By Arthur Pointer

WYLDE AND WOOLY



By Bert Thomas



MARTY LINKS

Storage Buffet Is Easy to Construct



THESE four units may be combined in different ways to be used in almost any room. They are as simple to make as so many boxes. Yet, modern glue and simple joints make them sturdy and strong. Pattern 226 shows every construction step and lists all materials. Price 25c.

WORKSHOP PATTERN SERVICE Drawer 10 Bedford Hills, New York

Smiles

Really a Thespian By Jove, he's wonderful. The way he displays affection toward the leading lady, eh? Yes—pretty good—but you know he's been married to her for eighteen years. What? Really married; Gosh—what an actor.

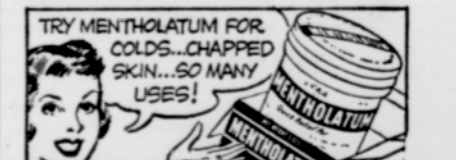
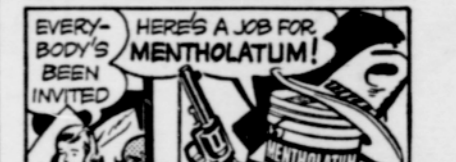
Kind to Animals And, waiter, bring me the same steak I had last night. I couldn't have hurt it in the least.

His Mistake He was so drunk, he spent all night throwing pennies in the sewer and looking up at the clock on the City Hall to see how much he weighed.

A la Mode Will you have pie, sir? Is it customary? No, it's apple.

Clever Waiter Have you any caviar? No, but I can give you a plate of tapioca and some dark glasses and you'll never know the difference.

'COLD DEMONS' GET JUDY!



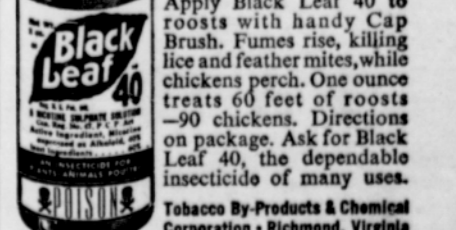
RESET LOOSE CASTERS

EASY! Fill the hole with Plastic Wood... then force caster back into place. Handles like putty, hardens into wood. Plastic Wood holds firmly, lastingly.



Plastic Wood A CELLULOSE PAPER FILLER IN CARTRIDGES OR TUBES

TO KILL Chicken Lice AND Mites



Apply Black Leaf 40 to roosts with handy Cap Brush. Fumes rise, killing lice and feather mites, while chickens perch. One ounce treats 60 feet of roosts—90 chickens. Directions on package. Ask for Black Leaf 40, the dependable insecticide of many uses. Tobacco Products & Chemical Corporation • Richmond, Virginia