

OLD TIMERS

Early American Scouts, Traders

By R. M. DeMILLE

When the American enterprise was nearly crushed out west in the Rocky mountains, the hardy pioneers were pushing out from the east with pack outfits, wagon trains, and up the Missouri river in canoes and on the decks of the old stern-wheelers.

In 1823, William Ashley led an expedition across the plains. He had a terrible resistance with the Indians, and lost 14 of his hardy plainsmen. In 1824, Ashley pushed on west and discovered a southern route through the Rocky mountains, and led his expedition to great Salt Lake, explored the Utah valley, and built a fort called Ft. Ashley.

Trapping Good

A trail was made, and in two years they shipped back to St. Louis over \$200,000 worth in furs. Ashley was a native of Virginia, commencing his trading career in the Rocky mountains and on the plains before he had reached the age of 20 years. He then manufactured saltpeter for gun powder before he went into fur trading in the west.

The Indians in the employ of the Hudson Bay company made things serious on him. On the upper Missouri he gathered an army of well-seasoned trappers, like himself, and drove them across the state line, out of the state into Montana.

Jim Bridger was another old Virginia boy, born in 1804.

Goes West

When 10 years old, his father and mother having died, the boy began earning a living for himself and his sister by working on a flat river boat. Stories from the West's wilderness stirred the lad, and when he was 16 he joined a party of trappers leaving St. Louis for the Northwest, and continued his career trapping and hunting in the Rocky mountains and on the plains.

He discovered the great Salt Lake in 1824 and the south pass in 1827; explored the Yellowstone lake and the geysers in 1830; founded Ft. Bridger in 1843; opened the overland route, named Bridger's Pass to great Salt Lake; was a guide to the United States exploring expedition under Gen. Albert Sidney Johnson in 1857; aided G. M. Dodge to locate the line of the Union Pacific railroad, and acted as guide to the army in the campaign against the Sioux Indians, 1865-66.

He received honorable burial at his death and a handsome monument over his remains in Mount Washington Park cemetery by the people of Kansas City.

In every respect, Bridger was a typical pioneer American, plunging into the depths of the wilderness for the excitement of it, and to gratify a curiosity to see what was in the great beyond. He was the friend of the immigrants to Oregon, and wandered far out of his way to warn them against marauding savages and to guide them on their course. Bridger had a great instinct on following the problems of nature's wildest formalities of the western crooks and turns of the trails, especially where Indian trouble was likely to flare up without warning. He was never lost on the trail, night or day. He was a noted guide and scout for the American army in time of the Indian wars with the Sioux, Blackfeet and many other tribes. He had combed the trails of the Rocky mountains and the plains to the Mexican border and back through the northern states to the Dakotas. Jim Bridger's peak was named in his honor; and in the capitol building of the state of Minnesota is the painting of a trapper in full dress, of which Bridger was the original.

1952 Chevrolets Due January 19

New model Chevrolet passenger cars and trucks will go on display at dealer showrooms nationally, Saturday, January 19.

The disclosure by W. E. Fish, general sales manager, accompanied an announcement that in 1951 Chevrolet led all other automotive manufacturers in retail sales for the twelfth consecutive peacetime year.

"Last year's new car deliveries," said Fish, "brought the number of Chevrolets in service to over 12 million. No other make in automotive history ever accumulated so imposing a total."

He aided Dr. Whitman on his first trip to Oregon, and in return, the doctor cut an iron arrowhead out of Bridger's shoulder, which had been fired into him by a Blackfoot Indian. Nevertheless, the trapper retained no grudge against the red race, from which he took a Shoshone squaw for his wife.

Other Scouts

There were others engaged in pioneering into the western wilderness toward Oregon for furs and Indian trade. Capt. Sublette served with Ashley and brought him out. He had a rare faculty of managing the Indians, but when he was engaged to fight them they always got the worst of it. Sublette was the first man to tame the Blackfeet. After a desperate fight at Pierre's Hole, Sublette became renowned among the Rocky mountain men as the greatest fighter with the Indians. The Blackfeet submitted to Sublette and helped him celebrate a sort of Roman triumph on his return to St. Louis with a pack of Indian ponies a mile long laden with furs.

One of the Sublettes drifted as far west as California. While there he got into a fight with a Grizzly bear. He killed the bear but later died from the wounds inflicted by the bear.

(Continued Next Week)

R. A. McCallister Services Held

Robert Alexander McCallister, 76, of 76 Lincoln street, passed away late last Friday night at the Ashland hospital after two years of failing health.

Mr. McCallister, a native of Ashland, was born here on Dec. 2, 1875 and was a rancher on Neil creek near the Klamath junction for many years. He had made his home in Ashland since he sold his ranch in 1942.

He is survived by a daughter, Mrs. Donna Crawford, Banning, Cal.; sisters, Mrs. Anna Bounds and Mrs. Elizabeth Hendrix, Ashland; Mrs. Amy Bressler of Berkeley, Cal., and Mrs. Agnes Sams of Portland; by nephew George Scribner, Klamath Falls and a niece, Mrs. Lois Sizemore of Ft. Klamath.

Services were held Wednesday in the Litwiller Funeral home with the Rev. Earl Downing officiating. Interment followed in Mt. View cemetery.

SOC Evening Classes Open

Winter term registration at Southern Oregon college totaled 573 on Monday with full time student acceptance ending yesterday.

This registration figure was only 10 short of the fall term number, Mrs. Mabel W. Winston reported, and she anticipates that the September figure may be topped at the end of the period due to the keen interest being shown in the evening classes.

Townpeople who are interested in attending the night classes are advised that classes in vocal lessons are open next Tuesday; salesmanship and international scene next Wednesday; art appreciation and folk dancing on Thursday; and essentials of speech, development of the American novel and orchestra on Monday.

Benjamin Franklin said: "A penny saved is a penny got" — though it is usually misquoted: "... a penny earned." Either way, the regular buyer of U. S. Defense Bonds is heeding the advice of the wisest of Americans.

IN OUR CHURCHES

PRESBYTERIAN CHURCH

130 N. Main (at Helman) "A Friendly Church for Thoughtful People" Church School for all ages at 9:45 a.m.

Morning Worship at 11 a.m. Anthem by the choir. Sermon by the pastor. Session Meeting at 3 p.m. Young People's Meeting at 6:30 p.m.

FIRST CHURCH OF CHRIST, SCIENTIST

Pioneer avenue, south. Sunday morning service at 11 a.m.

Subject: Life. Golden Text: Proverbs 16:22. Understanding is a wellspring of life unto him that hath it. Sunday school at 9:30 a.m. Nursery available during the Sunday morning service.

Wednesday evening meeting, which includes testimonies of Christian Science healing, is held at 8 p.m.

Reading room open daily from 2 to 5 p.m. except Sundays and holidays.

The public is cordially invited to attend these services, and to use the reading room.

EAST SIDE CHURCH OF CHRIST

1047 Iowa, Ashland Sunday Services: 10:30 a.m. and 7:30 p.m.

Radio Program, Sunday, 9:15 a.m., KWIN.

"By this shall all men know that ye are my disciples, if ye have love one to another." John 13:35

We invite you to meet with us to worship God and to study his will that we might know better how to be of service to Him and to our fellow man.

We invite you all to attend these services, to worship, and to study the word of God.

FIRST METHODIST CHURCH

N. Main at Laurel Ross Knotts, minister.

Sunday school, 9:45 a.m. Morning worship, 11 a.m. Anthem and solo. Junior church and nursery.

FIRST BAPTIST CHURCH

Corner First and Hargadine. William H. Tillman, pastor. "Where Souls are Fed and Hearts Made Glad."

Sunday: 9:45 a.m. Sunday school, a class for every age. Morning worship, 11 a.m., special music, service broadcast over KWIN.

Youth fellowship services, 6:30 p.m.; evening service, singing, testimonies and gospel message, 7:45 p.m.

Monday, prayer meeting at 8 p.m.

Wednesday, 7:30 p.m., midweek service and Bible study; 8:30 p.m., choir rehearsal.

Thursday, 7:30 p.m., Sky Pilots in their club house on Walker avenue.

Youth Fellowship groups, Wesley Foundation, 7:00 p.m. 6:00 p.m.

Choir rehearsal, Wednesday, 7:30 p.m.

GRACE LUTHERAN CHURCH

Iowa and Mountain avenue Paul W. F. Harms, Pastor

Sunday School 9:45. Adult Discussion Group 10:00. Morning Worship Service 11. Evening Service 7:30.

FIRST CHURCH OF CHRIST (Christian) Second and B streets

Earl F. Downing, Minister Bible School, 9:45 a.m.

Morning Service, 11 a.m. Sermon, "What is Worship?"

Junior Church, 11 a.m., for the children. Nancy Holloway, supervisor.

Christian Endeavor, 6:30 p.m. Three groups: Juniors, Junior High and High school, and Town and Campus.

Evening Service, 7:30 p.m. Sermon, "Let's Confess that Jesus Christ is Lord Now."

Tuesday: Fellowship supper with Jones-Keister evangelistic team in charge of program.

Midweek Service, Wednesday, 7:30 p.m.

Life insurance, a savings account and a growing stack of U.S. Defense Bonds are three solid legs of thrifty living. The fourth is productive work.

Buying Defense Bonds is one of the wisest and soundest investments an American can make, for himself, his family, their freedom and prosperity. For future ease, put your Savings in E's — U.S. Defense Bonds.

MONUMENTS AND MARKERS Granite, Marble N. W. BURNS MEMORIALS "On the Place"



It's All in Knowing How!

HOME, car, furnishings. You can lose all this to fire, accident, windstorm. That is a big problem! But coming up with the correct, safe answers is easy for us. Call on this Hartford Agency today!

S. C. Jones & Sons "BILLINGS AGENCY" (Since July 1883)

DEPENDABLE INSURANCE COUNSELORS Corner Main and Oak Ashland Hotel Bldg. Phone 6781

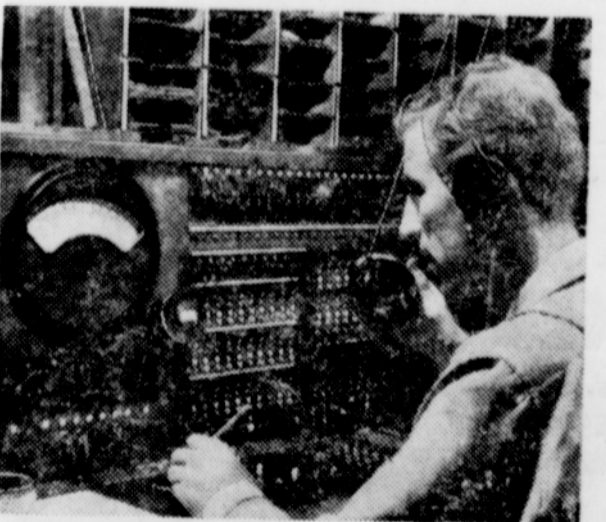


"Pole stubbers" at work: Inspection has revealed a pole which shows damage at the ground line. Now, reinforced with a short length, it will be strong as new, and we'll have saved much of the cost of a new pole.

LINE PATROL How we stop telephone trouble—before it starts!

"Will it work when I want it?"—that's perhaps the most important thing you want to know about your telephone. That's what we want to be sure of, too. And that's why repairmen, testers, inspectors and many other telephone specialists are constantly at work to make sure your calls go through. The

term we use is preventive maintenance. And it simply means testing and inspecting thousands of miles of lines and cables, and checking switching equipment constantly—on foot, in trucks and electronically—to find and fix any part of our complex system which might cause future trouble.



"Trouble detective": If our electronic testing equipment spots possible line trouble, his testing devices locate the difficulty—and a repair crew is dispatched to stop the trouble before it can interrupt your service. All over our system, we are alert, 'round the clock, to make sure you'll have the world's most dependable telephone service.



Your telephone is one of today's best bargains

Few of the things you use in your daily life have gone up less, in these inflationary times, than the rates for telephone service. Even though our costs of providing service have skyrocketed, your telephone calls remain one of today's best buys.

Pacific Telephone

Planning an ELECTRICALLY MODERN home?



QUIZ on adequate wiring

See if you answer yes to these questions about your new home.

Q. Could you use the other half of your refrigerator convenience outlet?

A. Yes, if the outlet is located near one side of the refrigerator.

Q. Will you be able to reach your living room radio without getting up?

A. Yes, if you plan your convenience outlets to fit your interior decoration plans.

Q. Could you "light your way" from room to room?

A. Yes, if you provide a central source of light in each room, controlled by a switch at each entrance.

Q. Could you work any place in the kitchen without standing in your own light?

A. Yes, if a lighting unit has been provided on the wall above each work area.

See Your Electrical Contractor