

Southern Oregon News Review

Ashland, Oregon 33 East Main Street

Entered as second-class mail matter in the post office at Ashland, Oregon, February 15, 1935, under the act of Congress of March 3, 1879

MR. and MRS. J. LOGAN WHITE Publishers
 J. Logan White Managing Editor
 Faith MacCullough Local News, Phone 8561 or 7162

Subscription Rate — \$2.50 year

MEMBER
 Oregon Newspaper Publishers' Association

Will You Help?

During the last holiday season, as in the past, tragedy came to many homes. It came in the form of fire. In some instances, it left dead, maimed and suffering human beings behind. In one case a fire which started with a Christmas tree destroyed most of a town.

So, again, the nation has been shown that fire is one of the greatest menaces to life and property—and a menace which is always waiting for a chance to strike.

Yet the terrible toll which fire took in 1949 need not be repeated in 1950. Fire is not an enemy against which there is no practical defense. It is, on the contrary, an enemy which can be captured and controlled. The experts say that something like 90 per cent of all fires are unnecessary—they could have been prevented with just a little thought, a little time, a few simple precautions. Most fires start from the simplest hazards, carelessness with smoking materials, frayed electric cords, improperly maintained stoves and furnaces, accumulations of trash, and so on. You don't have to be an authority on fire prevention to get rid of these hazards in your home or place of business and the cost is small.

This year, organized fire prevention will go ahead in high gear. It will be successful if, and only if, it is given public cooperation everywhere. Your life and your property may be at stake. Are they worth protecting?

Socialism By The Back Door

Will this country gradually adopt socialized medicine by the back door?

Current legislative developments give that question pertinence. The strongest kind of pressure has been exerted on behalf of the compulsory health insurance bill. However, so much public opposition has developed that its sponsors think other tactics may prove more fruitful for the time being.

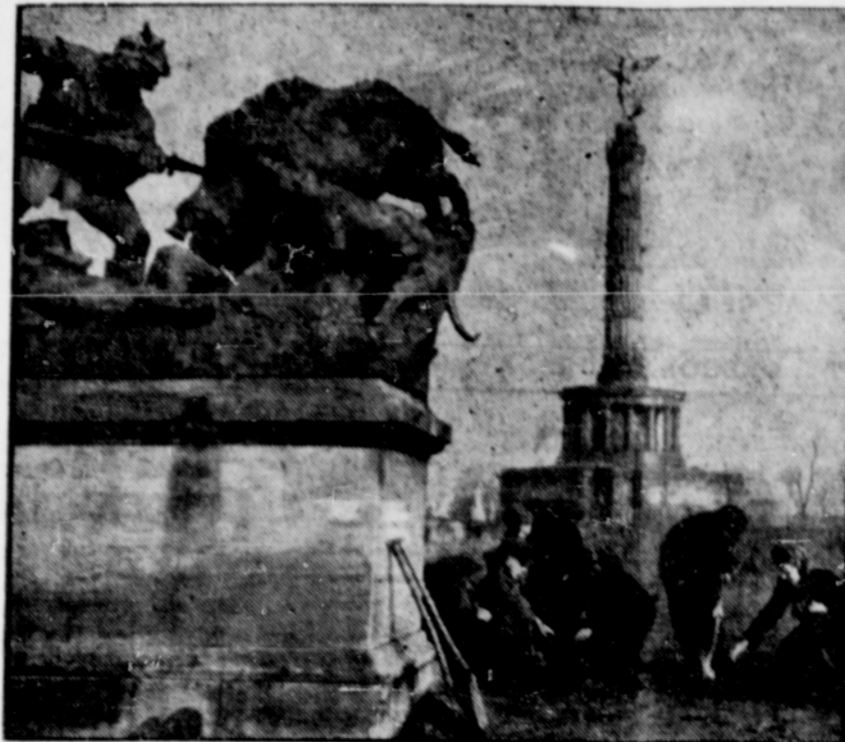
As an example the Senate has passed and the House may soon vote on a bill, which has received relatively little attention, authorizing Federal grants-in-aid to medical schools. Under the terms of it, the Surgeon General would decide what schools were to get the money, in what order, and in what amounts. He would work with a council, but its function would be advisory only. All the real power of action and decision would be vested in one man. The medical schools would have to come to him, in the scramble for funds.

If the government pays the bill—in this or any other matter—the government is eventually going to give the orders. That is inevitable. Such a measure, innocuous as it may seem to some, would be a perfect starting point for legislation which would subject our medical schools to political administration in all phases of their activity.

Still another measure which has passed the Senate and is now in the House would make the government responsible for the physical and mental health of all school children between five and 17. That may have an appealing sound—yet can anyone doubt that it would become a plank in the house of socialized medicine?

The point is that socialism usually comes to nations on a piecemeal basis. These bills indicate the plan to be used in this country.

Help Wanted



REPLANT BERLIN BATTLEGROUND—Berlin gardeners plant small trees in the famous Tiergarten which was completely destroyed during the battle for Berlin. In the foreground is a bullet-riddled monument depicting a wild boar hunt, and in the background is a triumphal column.

FBI To Instruct Police Officers

To further advance the efficiency and professional standing of city and county police work in Oregon, a new series of police training classes will be conducted in ten cities of the state during the next three months under the sponsorship of the Oregon Association of City Police Officers and the Oregon State Sheriff's Association. Announcement of the new training program was made by Chief of Police Keith L. Jones of Eugene, chairman of the organization's training committee.

Supplementing the program carried out in the basic training schools held last summer, the new series will consist of nine special classes to be conducted by representatives of the Federal Bureau of Investigation, state police department, and the Portland police department. The first four will provide advanced technical treatment of such subjects as laboratory work in criminal investigation, interviews, preliminary crime investigation and traffic enforcement. The final five classes will cover practical problems in the handling of burglary cases and will feature a complete "on the scene" investigation, interrogation of "suspects" and a moot court trial of the "accused."

The 1950 series of classes will comprise the second year of a long-range program of progressive officer training that was adopted in 1949 by the sponsoring organizations. The location of the schools and the starting date for each has been announced as follows: Astoria, January 16; Oregon City, January 17; Salem, January 18; Corvallis, January 19; Eugene, January 20; Medford, January 25; Klamath Falls, January 26; Bend, January 27; The Dalles, January 30; and Pendleton, January 31.

Road And Street Problems To Be Aired At OSC Meet

OREGON STATE COLLEGE—Problems of designing, building and paying for Oregon's roads and streets—both from the engineering and taxpaying standpoints—will be discussed at the second annual roads and streets conference at Oregon State College, Corvallis, Jan. 17-18.



DON'T DELAY!

CHECK UP today on your Fire Insurance. Don't wait until you have a loss to learn that your protection is not adequate... that something has been overlooked... that your policy does not fit because of an addition to your property or a new mortgage. Call us now.

S. C. Jones & Sons

BILLINGS AGENCY
 (Since July 1883)
 DEPENDABLE
 INSURANCE COUNSELORS
 Corner Main and Oak
 Ashland Hotel Building
 Phone 8781

DR. STEVENSON NAMED TO WRITER'S STAFF

Dr. Elmo N. Stevenson, President of Southern Oregon College, has been reappointed to the editorial staff of the American Biology Teacher. This appointment entails the reviewing

and their chairmen are: range and pasture management, Wiley Gardner, Dallas; predatory animal control, L. E. Sletto, Lyons; legislation, Albert Powers, Coos Bay; swine production, Lyle McKinley, Shedd; livestock diseases, Jack Swanson, Lebanon; and resolutions, Joe Harland, Rickreall.

**FURNITURE
 UPHOLSTERING
 AUTO TRIM
 Pickup & Delivery
 Phone 3217**

of recent books on natural history and articles concerning the Northwest area submitted for publication in the magazine.

The cause of most traffic accidents — Too much under the car's hood and not enough under the driver's.



From where I sit... by Joe Marsh

Why Scoop No Longer Works Here

Scoop Blake paid as a friendly call at the *Clarion's* office last week and we were talking about when he was a reporter here.

"Remember how mad I got when I found out you were writing that election story right from your desk?" I asked him. "And how I made you get out and learn what a sheriff's job was all about?"

"I sure do, Joe," said Scoop. "I want to thank you for teaching me the 'hat-trick'—putting on my hat and finding out the facts, that is." Then we both had a good laugh because he found out so much that

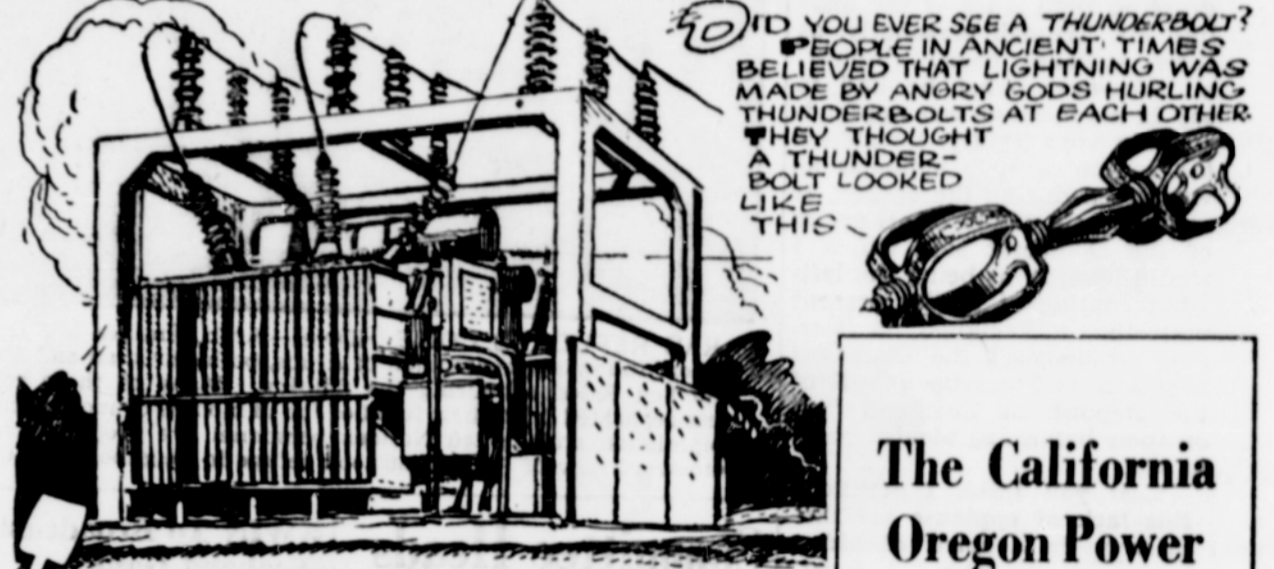
darn if he didn't run and get elected sheriff himself!

From where I sit, we should find out the facts before we try to talk about anything. When we do, we're inclined to be more tolerant... we're apt to understand a little more about the other fellow's preference for, say, his political candidate or for a temperate glass of beer now and then. I say, if you don't want to get tripped up, don't leap to conclusions!

Joe Marsh

Copyright, 1950, United States Brewers Foundation

The HISTORY OF ELECTRICITY



THE ELECTRIC SUB-STATION DOES NOT MANUFACTURE ELECTRICITY — IN FACT IT DOES JUST THE OPPOSITE. FOR ECONOMICAL TRANSMISSION ELECTRICITY IS SENT OUT OF THE POWER STATION AT SUCH HIGH VOLTAGE THAT IT IS NECESSARY FOR SUB-STATIONS TO REDUCE THIS VOLTAGE SO THAT IT CAN BE USED IN THEIR LOCALITIES.

The California Oregon Power Company

HAS COPCO HAD TO CURTAIL THE USE OF ELECTRICITY?

Power curtailment has only been necessary during periods of drought, or during periods of extremely cold weather when streams became frozen. The curtailment was of short duration and was applied only to large industrial users of electricity.

STATEMENT OF CONDITION

"Let's Build Oregon Together"

FIRST NATIONAL BANK OF PORTLAND

DECEMBER 31, 1949

Member Federal Deposit Insurance Corporation

RESOURCES

| | |
|---|-------------------------|
| Cash in vault and in Federal Reserve Bank | \$ 65,368,396.71 |
| Due from Banks | 35,182,297.77 |
| Total Cash | \$100,550,694.48 |
| United States Government Obligations, Direct and Fully Guaranteed | 210,441,731.25 |
| State, County and Municipal Bonds and Warrants | 40,182,346.01 |
| Other Bonds and Securities | 2,333,965.84 |
| Stock in Federal Reserve Bank | 600,000.00 |
| Loans and Discounts | 151,077,377.52 |
| Accrued Interest Receivable | 1,794,861.89 |
| Bank Premises, Furniture and Fixtures and Safe Deposit Vaults | 5,406,961.12 |
| Other Real Estate owned | None |
| Customers' Liability on Accounts of Letters of Credit | 4,155,291.23 |
| Other Resources | 283,432.19 |
| TOTAL RESOURCES | \$516,826,661.53 |

LIABILITIES

| | |
|--|-------------------------|
| Capital | \$ 4,500,000.00 |
| Surplus | 15,500,000.00 |
| Undivided Profits | 13,042,322.69 |
| Total Capital Funds | \$ 33,042,322.69 |
| RESERVE FOR POSSIBLE LOAN LOSSES | 598,492.61 |
| DEPOSITS | 476,438,305.78 |
| Demand | 333,219,859.66 |
| Savings and Time | 143,218,446.12 |
| Liability for Letters of Credit and as Acceptor Endorser or Maker of Acceptances and Foreign Bills | 4,155,291.23 |
| Interest Received in Advance | 1,516,328.68 |
| Reserve for Interest, Taxes, Etc. | 971,695.47 |
| Other Liabilities | 104,225.07 |
| TOTAL LIABILITIES | \$516,826,661.53 |

In addition to its 45 branches throughout Oregon 17 other Oregon Banking Offices are members of the First National Bank Group

| | |
|--|-------------------------|
| DEPOSITS | |
| The First National Bank of Portland and 45 Branches | \$476,438,305.78 |
| 17 other Oregon Banking Offices in the First National Group | 99,926,938.75 |
| | \$576,365,244.53 |
| LOANS AND DISCOUNTS | |
| The First National Bank of Portland and 45 Branches | \$151,077,377.52 |
| 17 other Oregon Banking Offices in the First National Group | 24,292,636.77 |
| | \$175,370,014.29 |
| TOTAL RESOURCES | |
| The First National Bank of Portland and 45 Branches | \$516,826,661.53 |
| 17 other Oregon Banking Offices in the First National Group | 106,888,748.68 |
| TOTAL RESOURCES OF THE 62 BANKING OFFICES IN THE FIRST NATIONAL GROUP | \$623,715,410.21 |

THESE ARE THE 62 BANKING OFFICES IN THE FIRST NATIONAL GROUP

- PORTLAND BRANCHES**
 PORTLAND MAIN BRANCH
 S.W. 5th, 6th and Stark
 SIXTH AND MORRISON BRANCH
 UPTOWN BRANCH
 S.W. 14th Ave. at Alder
 EAST PORTLAND BRANCH
 S.E. Morrison at 6th Ave.
 HAWTHORNE BOULEVARD BRANCH
 Hawthorne Blvd. at S.E. 39th
 LIVESTOCK-KENTON BRANCH
 N. Denver Ave. at Interstate
 MONTAVILLA BRANCH
 S.E. Stark St. at 80th
 HOLLYWOOD-ROSE CITY BRANCH
 N.E. Sandy Blvd. at 42nd
 SOUTHEAST PORTLAND BRANCH
 S.E. 82nd Ave. at Foster Road
 UNION AND RUSSELL BRANCH
- BRANCHES OUT OF PORTLAND**
 ALBANY BRANCH
 ASHLAND BRANCH
 ASTORIA BRANCH
 BEND BRANCH
 CENTRAL POINT BRANCH
 CONDON BRANCH
 COOS BAY BRANCH
 COQUILLE BRANCH
 ENTERPRISE BRANCH
 FOSIL BRANCH
 GRANTS PASS BRANCH
 GRESHAM BRANCH
 HEPPNER BRANCH
 HILLSBORO BRANCH
 HOOD RIVER BRANCH
 KLAMATH FALLS
 Klamath Falls Branch
 South Sixth Street Branch
 LA GRANDE BRANCH
 LAKEVIEW BRANCH
 MEDFORD BRANCH
 MERRILL BRANCH
 MOLALA BRANCH
 NEWBERG BRANCH
 NORTH BEND BRANCH
 NYSSA BRANCH
 OAKRIDGE BRANCH
 OREGON CITY BRANCH
 PENDELTON BRANCH
 SALEM BRANCH
 SHERMAN COUNTY BRANCH
 STATTON BRANCH
 THE DALLES BRANCH
 TILLAMOOK BRANCH
 UNION BRANCH
 WOODBURN BRANCH
- OTHER BANKING OFFICES IN THE FIRST NATIONAL GROUP**
 Carlton State and Savings Bank
 Benton County State Bank (Corvallis)
 Philomath Branch (Philomath)
 The First National Bank of Cottage Grove
 The First National Bank of Eugene
 West Eugene Branch
 The First National Bank of Forest Grove
 The First National Bank of Lebanon
 Monroe State Bank
 State Bank of Malheur County (Ontario)
 Moreland-Sellwood Bank (Portland)
 The First National Bank of Prineville
 Selo State Bank
 Clatsop County Bank (Seaside)
 Coalinga and McClaine (Silverton)
 Bank of Sweet Home
 Yamhill State Bank