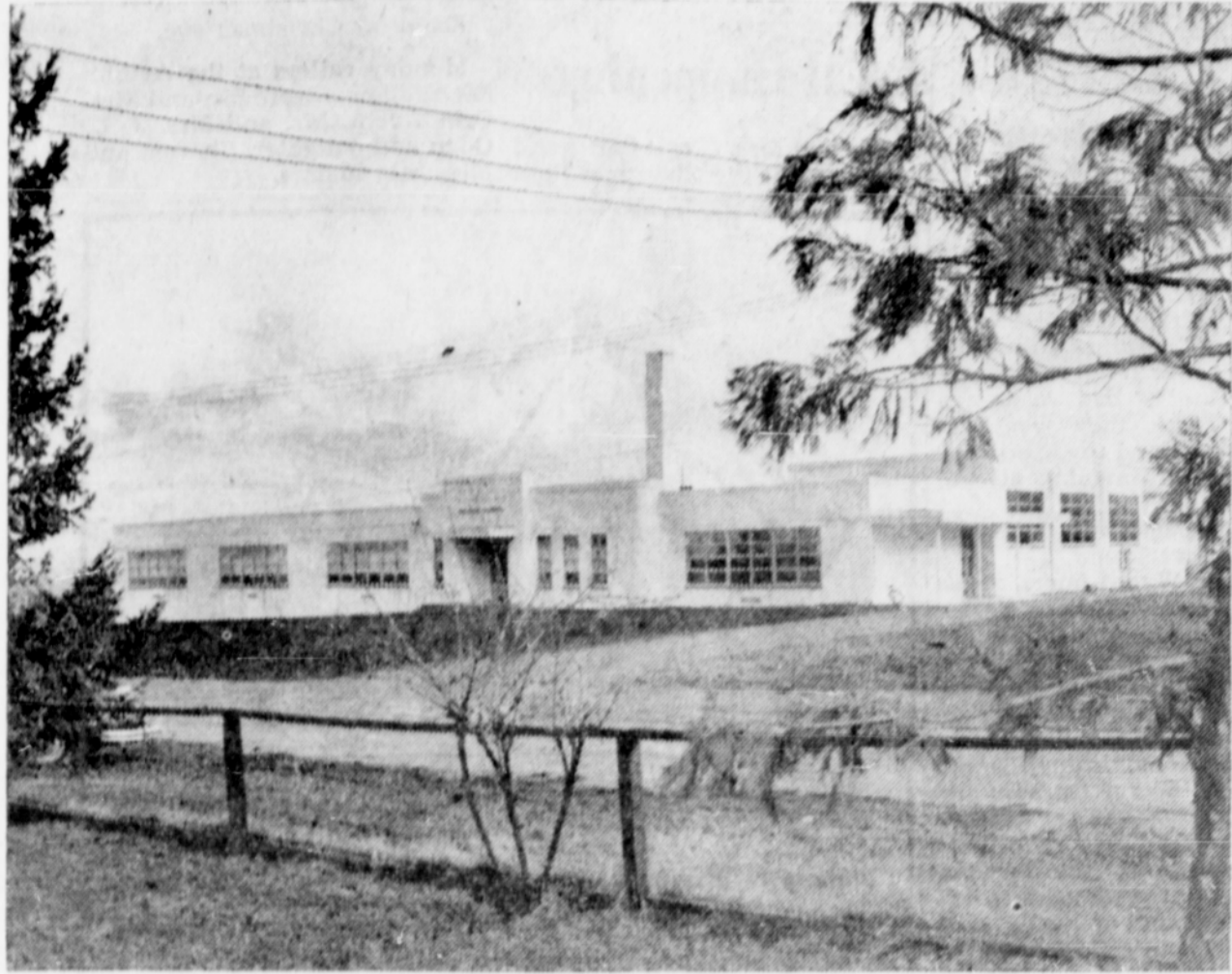


1949 Big Year For Ashland School Building Program

Southern Oregon News Review
Ashland, Oregon
Thursday, December 29, 1949



NEW WALKER SCHOOL—One of the three new schools of School District 5 which was completed during 1949. The one-story concrete structure represents the latest in school design and is planned so that more rooms can be added if they arise.

The biggest building program in the history of Ashland schools was completed during 1949 with completion of the new George A. Briscoe building on North Main street, the Walker school building and remodeling of the Lincoln school building.

Original bids on the buildings giving Ashland grade schools 60,412 square feet of floor space, was \$529,064. The combined enrollment of the grade schools has reached 949.

The first school was held in Ashland as early as 1854-55, five years prior to Oregon being admitted to statehood in 1859, but it was not until 1860 that the first school building was completed.

In 1873 the Academy built on Briscoe School site. This building was replaced in 1904 by the Washington School which has just been removed to make a site available for the George A. Briscoe school. This makes approximately 75 years that this area has been used for school purposes.

In 1889 the Ashland High School was started as the first in the state outside of Portland. First building was located on North Main 3 blocks north of Briscoe School. The High School was moved into the Academy and then into the Washington building from 1904 to 1911, when the present building was built.

In 1900 East Side School was built on McCalls Stock lot, this building was later enlarged and is now the Ashland Junior High.

The Donald M. Drake Company of Portland was the low bidder when the contract was let January 14, 1949. Construction was started in February and work has been carried on simultaneously at the three sites.

In each project there is a multipurpose room which will serve as auditorium, gymnasium and lunch room. Roll-away tables are stored under the stage and swing-up type basketball goals are to be installed.

Ceilings in all rooms are covered with high grade acoustical material which keeps noise down to a minimum. Unit ventilators insure an ample supply of fresh air. Much attention has been given to lighting, both as to fixtures and other factors such as large windows, pastel shades on the walls, bright tones in the asphalt tile and "lite-site" chalk board. The "butternut" stain is covered with flat varnish.

With the addition of the three classrooms at Lincoln it is now a twelve teacher school which is the same as the George A. Briscoe building. Six classrooms were constructed at the Walker School and it is planned with expansion possibilities. There are three elementary teachers in the Bellview School.



MULTI-PURPOSE ROOM—at Walker school shows cafeteria kitchen in the background. The stainless steel tables are fitted with coasters to permit easy removal and use of the room as a gymnasium or auditorium. Tables were manufactured by the Oak Street Tank and Steel Company of Ashland.

William A. Reedy Passes Friday

William Albert Reedy, 78, of Rte. 1, Box 25, Ashland, passed away Friday A.M.

Reedy was born on Nov. 21, 1871, in Hickory Co., Missouri, and had been a farmer in this vicinity for 17 years. The survivors include his wife, Mrs. Anna E. Reedy, children Wm. Harold Reedy of Corvallis, John Walker of Ashland, O. D. Walker of Tulare, Calif., and Mrs. Neva Douglas of Porterville, Calif.; 8 grandchildren, 4 great-grandchildren, and others.

Funeral services and interment were at Tulare, Calif.

MOVE TO EUGENE

Mrs. Jaunlin and daughter Adrianna who came here from Latvia, the past summer and have been guests of Mrs. Heath left early last week for Eugene where they will make their home and Adrianna will enter the University of Oregon.

Stationery Supplies at the News Review

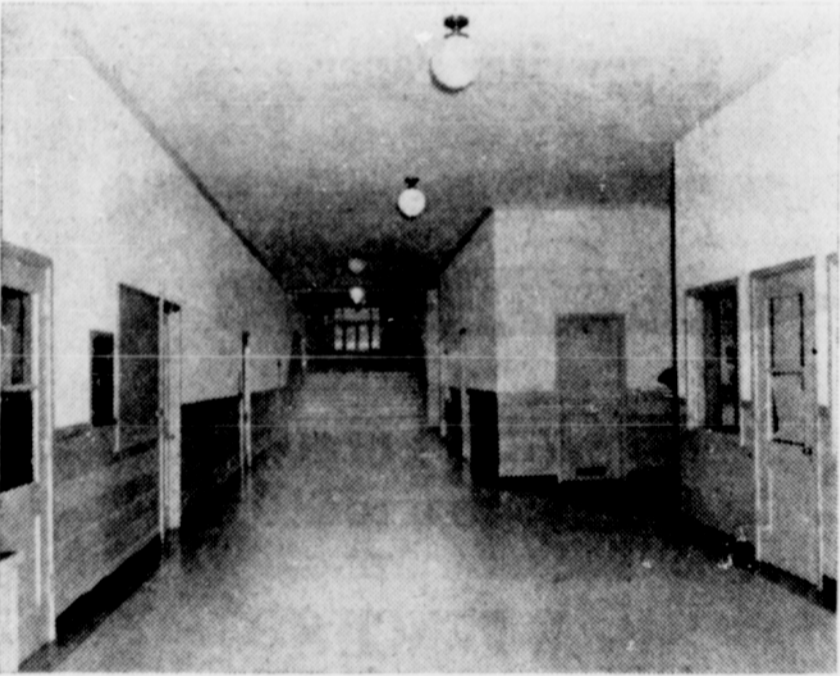
Jack P. Farmer Now In Japan

NAGOYA, JAPAN - Headquarters, 26th Weather Squadron has announced the arrival of Pfc Jack P. Farmer, son of Mr. and Mrs. Ivan W. Farmer, 1313 1/2 Clay St., Ashland, Oregon. He has been assigned to the 20-8 Air Weather Service Detachment at Johnson Air Base located near Tokyo. The detachment at Johnson is one of eleven dispersed weather stations currently comprising his new squadron. They are responsible for providing complete meteorological information for all components of the occupational forces located throughout the four main Japanese Islands.

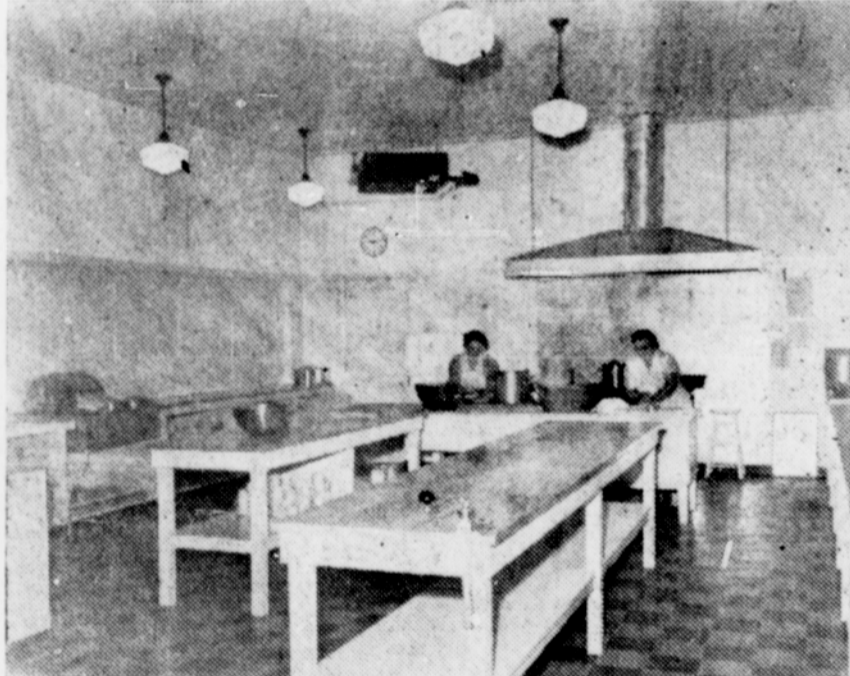
Entering the Air Force in January 1949, Private Farmer first selected the Air Weather Service as the technical branch in which he wished to work, then further selected the weather observing section and, upon completion of the weather indoctrination course at Chanute AB, Illinois, received his present assignment. As a weather observer, he makes hourly observations of existing weather conditions thusly obtaining data required by the forecaster in making his predictions. Prior to his enlistment in the service, Farmer attended Ashland High School where he performed on the football and track teams.



BRISCOE FIRST GRADERS—The first grade pupils of Mrs. Ailee Willits in the new George A. Briscoe school appreciate their spacious quarters as they start their schooling.



MAIN ENTRANCE—at Briscoe school is a sharp contrast to the dark interior of the old Washington school which was replaced by the new structure. Note the steps at the rear which lead to another level of the modern one-story school building.



MODERN CAFETERIA—Kitchen at Lincoln school where hot nutritious luncheons are prepared for hungry grade school youngsters. Similar installations are found in the Briscoe and Walker schools.



WALKER CLASSROOMS—A typical intermediate classroom at Walker school shows ample windows and modern lighting fixtures. Spacious desks for students have been designed scientifically for comfort and assure that the best possible work be done by pupils.



LIGHT, AIRY CORRIDOR—in Lincoln school is the latest word in school practicability. The wide corridor is easily kept spotlessly clean and designed to keep distracting noises at a minimum.

VISITS IN CALIFORNIA

Mrs. Catherine Heath will leave this week for a two months vacation in California. She will be accompanied by Mrs. Lou Phillips, of El Monte, Calif., who has been her house guest the past few weeks.

Get your Job Printing at the News Review

Highest Quality Chocolate Coatings . . .
Ingredients . . . Flavors . . . Plus
Good Cooking . . .

Make the High Quality Standard

CANDIES

Made by the JOHNSTONE FAMILY in their HOME
at 329 Beach Street, Phone 3972

Accepting orders now for Christmas,
WILL MAIL CANDY ANYWHERE

Candies made by the Johnstone Family are sold in Ashland
at their Home, located across from the Lincoln School
and at your local merchant



Since the war Pacific Telephone gained as many telephones in the West as in the previous 19 years

West's four-millionth telephone goes to work



1. Takes a lot of equipment to serve 4,000,000 telephones making 22,000,000 calls a day. And in just the few high-speed years since the war, we've almost doubled our facilities as measured in dollars. And those dollars have produced results. It took 45 years to install our first million telephones, 17 years to install the second million, 6 years for the third . . . and only 3 1/2 years for the fourth



2. Service keeps on improving as we add this new equipment. Today you can get the dial tone or the operator quickly in almost every exchange. Long Distance calls, nine out of ten of them, go through while you stay on the line . . . often in half a minute if you know the number. It's a good record. But we won't be satisfied until everyone who wants service has it . . . the best service ever

3. Your own telephone today is more valuable as a result of the many we've added. You can call more of the people you want to call—more can call you. And your telephone does its work, big jobs and small, for only a few pennies a call. It's one of the best buys you can make with your dollars today

Your telephone is one of today's best bargains

The Pacific Telephone and Telegraph Company