

**SOUTHERN OREGON NEWS REVIEW**

Published every Thursday by  
THE SISKIYOU PUBLISHING COMPANY  
167 East Main Street  
Ashland, Oregon  
Caryll H. Wines and Wendell D. Lawrence, Publishers

WENDELL LAWRENCE, Editor

Entered as second-class mail matter in the post office at Ashland, Oregon, February 15, 1935, under the act of Congress of March 3, 1879.

**CONFUSING**

Seems as though the meatless Tuesday and poultry-less Thursdays which were to save a starving Europe, have fallen into discard.

Wheat might be vital to the starving Armenians but it's just as vital to the Northwest's livestock and poultry according to P. M. Brandt, head of the animal industries division at Oregon state college.

Other farm economists and also several theoretical economists and a few innocent bystanders have also claimed that the brainstorm hatched by someone in the presidents advisory group is the product of a Rube Goldberg dream. It won't work, these experts say.

They point out that should wheat be withdrawn from its normal and reasonable use in feeding, the result would be a serious reduction in production of milk, meat, and eggs.

Other experts, and they back up their statements with an array of figures and titles and strong words, claim that a saving in wheat would affect the total amount of food stuffs available to feed the nations of the world.

We don't know just what to say. Both sides are so positive. Both sides present a good story. Looks like the best thing to do is to let the economists fight it out, right to the last grain.

★ ★ ★

**SPECIAL SESSION**

Calling Congress into special session at this time to work out plans to bring aid and succor to a Europe that faces starvation seems to us to be a futile gesture.

If Congress functions as intelligently this time as they did during the past session we'll all step farther and farther along the road towards inflation and one of these days Europe may be sending aid to a starving, inflation-busted America.

There is enough wealth in America today to aid Europe without a special session of a group of Congressmen who will be so busy thinking about the 1948 voting of their constituents that they will be afraid to make any bold stands toward helping anyone but themselves.

With the large group of isolationists and ostrich heads who are presently in control of the destiny of Congress, the Marshall plan has about as much chance of passing as our old milk horse had of passing Seabiscuit in the stretch.

This session of Congress will be a waste of taxpayer's money. We'll be paying for a pre-election burlesque with the principals dancing their hearts out for an encore come November 1948.

★ ★ ★

**CONGRATULATIONS**

We're glad to hear that Earl Newbry is the new secretary of state. Whether he has aspirations for the governorship or not we don't know; we've never heard him say. But if he didn't have any aspirations before, he might as well prepare to be bitten by the gubernatorial bug.

The office of the Secretary of State in the commonwealth of Oregon is practically a paved road to the governor's chair.

Newbry has played his cards close to his vest in the past. What will happen during the next few years is problematical. Our guess is that he'll turn up in the race.

We'll know for sure when we start getting press releases from the office of the secretary of state on traffic control. The volume of releases which are sent out to newspapers from the office of the secretary of state are a direct gauge as to a man's intentions.

The late Robert Farrell, Jr. had his sights set on sitting in the governor's chair. Never a day went by but what a release came along from Farrell telling about the potential number of traffic accidents which would happen on a given day, or giving a re-capitulation of the number of accidents which had taken place during the past week. It kept his name in the papers.

Whatever happens, we're glad that Newbry was selected, we're sure he'll make a good secretary of state. And if he accepts the gauntlet, we're sure that he'll make a good governor.

**Letters to the Editor**

Dear Sir:  
Just a few remarks anent the new music shell which it will be Ashland's fortune to have by next season. First, in the matter of duplication, either we need a music shell or we don't. Nothing else is a duplicate for a property constructed shell, which is a product of highly trained architectural skill.

"Bandstands" have in numerous instances been built in public squares as much for public appearances as for concerts or other musical events. These bandstands were not designed for acoustical qualities. On the other hand, music shells were designed for secluded parks and were located to one side of the audience area and faced to spread sound over the audience area without distortion. This sort of audience area is naturally located in Lithia Park and was so noted by John McLaren, the designer of Golden Gate Park, who laid out Lithia Park in 1915.

To be continued next week

**HENRY ALDRICH PLAY TO BE PRESENTED SOON**  
(from Rogue News)

"Testing, 1-2-3-4, Testing-Testing All right in there? Then, start your lines," and the Henry Aldrich radio practice is again under way in preparation for its appearance in the Ashland High assembly next Thursday, November 6.

Those selected for the cast were Don Beagle as Henry; Louise Fliniau, Henry's sister; Mary; Curtis Vail, Mr. Aldrich; Eileen Michael, Mrs. Aldrich, Nancy Beers, Henry's steady girl friend; and Wanna Miller as the new girl who has alienated Henry's affections for the moment.

The "Recordio," recently purchased for the senior high school has been put to use by Mrs. Susan Collins, director of the skit. A complete recording of the October 30 national hook-up program has been made for the purpose of improving the characterization of the Ashland performers.

Henry is making another appearance at Ashland HI this fall in the annual Anniversary Play "What a Life by Clifford Goldstein. Miss Daniels, who was a new addition to the English staff this year, will direct the three-act play.

Try-outs are being held this week and next and any member of the student body is eligible to compete for the parts. No date has been set, as yet, for the Anniversary Play, but plans are to give it sometime or the Christmas holidays.

**EVERYTHING!**

Absolutely everything in the line of kitchen utensils to make your cooking a pleasure



Handy Food Grinder

With a Set of Chitters \$4.50



ENAMEL ROASTERS

Both oval and square  
Oval \$1.65 Square \$2.49



Handsome Gray Enamel Teakettles 98c

**METZ**

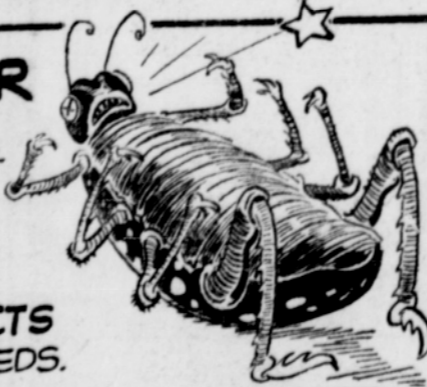
**THE FACT IS** BY GENERAL ELECTRIC



**COWS PAY FOR ELECTRIC PUMP!**

IF BOSSIE GETS WATER WHENEVER SHE NEEDS IT, INSTEAD OF WHEN IT'S PUMPED BY HAND AND CARRIED TO HER, SHE GIVES 10 TO 20 PER CENT MORE MILK CONTAINING 6 TO 12 PER CENT MORE BUTTERFAT.

**HOT SEAT FOR BUGS!** G-E SOIL STERILIZATION EQUIPMENT WIPES OUT WEEDS, BACTERIA, INSECTS IN FARMERS' HOTBEDS.



**WINS 11 1/2-YEAR TEST!**

A CERTAIN TYPE OF STEEL NOW USED IN G-E TURBINES WAS FIRST TESTED FOR 11 1/2 YEARS. THIS IS A TYPICAL EXAMPLE OF GENERAL ELECTRIC'S INSISTENCE ON PERFECTION.

**GENERAL ELECTRIC**

**J. P. DODGE & SONS**  
Your Local General Electric Dealers

**HOWARD LEADS GUNNERS**

O. Z. Howard with a score of 363 led the gunners this week at the Ashland gun club shoot. He was followed by O. R. Edwards, 362; Art Haskins, 354; Larkin Grubb, 346; and Dr. Lynn Crandall, 341.

Visitors will be welcome at the next shoot which will be held at 7:00 p.m. at the Armory.

Mr. and Mrs. Ernest Lytle and son have moved to Sacramento.

**PEABODY'S HAVE JEWEL**

Ken's Jewelry announces the arrival of a new diamond to be called "Mary Helen," discovered 5:00 a.m. November 3, by Harvey Woods, M. D. on property belonging to Mr. and Mrs. Kenyon Peabody. Weight 5.4 karats at time of discovery. First public showing to be November 10 at 1250, Iowa street.

Mrs. Don Travis spent the last three weeks in Los Angeles visiting.

**SALE**

This Ad Good For

**\$5.00**

on any

**LADIES COAT or Suit**

Until November 10th inc.

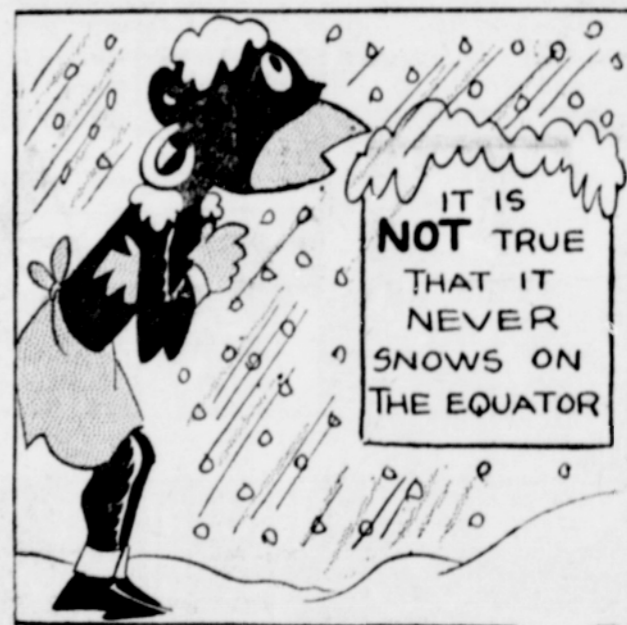
Only 1 ad to each garment

**PERRINE'S**

Better Clothes for Less Money

**JIM BUSCH says...**

**You'd Be Surprised**



And We Can Prove It

But it IS true that quality and service may be depended upon to be found at this store every day of every season. Why not stop in TODAY and look over our extensive selection of new values?

**BUSCH MOTOR CO.**

On the Plaza

Ashland

AN ENGINE LIKE NEW!

New Motor Guarantee Thrifty Pay Plan!

85 H. P.—\$127.50★

100 H. P.—\$140.75★

(★ plus installation)

Why wait? Drive your old Ford "back home" to us now, for a Ford engine that's rebuilt to factory specifications. You'll be Money ahead.



From where I sit... by Joe Marsh

**Square Biscuits, Yet!**

I see by a neighboring paper, that the round biscuit is on the way out. Yes, sir, home-management specialists have found that the square biscuit lends itself to assembly-line production and easy storage better than those customary ovals.

Well, we're all for progress, but that's one new idea we just don't cotton to. A round biscuit, spread nicely amidsthips with snappy country cheese, looks like a biscuit! And accompanied by a mellow glass of beer, it's a combination that you can't improve on!

So at the risk of being called old-fashioned, I'm voting for round biscuits, that fit a hungry man's mouth like no square imitation ever will... and for American beer served in the good old-fashioned way, in tall, cool mugs or ordinary glasses, with frosty sides and bubbles winking at the brim!

Think I'll step out to the kitchen for a snack right now!

Joe Marsh

**Mill Wood Fuel Oil**

**Gunter Fuel Co.**

233 4th St. Phone 5751

**Chiropractic Health Clinic**

308 N. Main Phone 4371 Ashland

**Ralph A. Foster**

Union Service Station

237 East Main St. Ashland, Oregon