

VARSITY

NOW PLAYING!



plus

EDGAR BERGEN • CHARLIE MCCARTHY
FIBBER MCGEE and MOLLY

HERE WE GO AGAIN

Friday and Saturday



plus

DICK FORAN

in

Song of the Saddle

Sun. Mon. Tues.

DE MILLE
Does It
Again!



Continuous Shows
SATURDAY
and
SUNDAY

Many Positions Now Open to Wacs

Direct assignment to 53 different jobs in the Women's Army Corps is now open to applicants under a new plan of recruitment announced by Capt. Beatrice Ringgold, chief WAC recruiter of the Oregon Recruiting District in Portland.

Assignment to these jobs, explained Capt. Ringgold, is based on civilian experience in these particular fields. Those qualifying under this plan, which is called special assignment recruiting for the Army Service Forces, may also indicate that they desire duty within the geographic limits of the Ninth Service Command.

Recruiting continues, added Capt. Ringgold, for the specialized jobs in the Air-WAC's and for general assignments in the WAC's.

Quotas are now open for the following jobs:

General clerk, clerk-typist, light truck driver, nurses' aide, cook, personnel clerk, medical technician, surgical technician, typist, stenographer, medical laboratory technician, non-specialist, mail clerk, chauffeur, duplicating machine operator, pharmacist, X-ray technician, supply clerk, stock clerk, file clerk, administrative and technical clerk, baker, dental laboratory technician, photographer, shipping clerk, statistical clerk, teletype operator, stock control clerk.

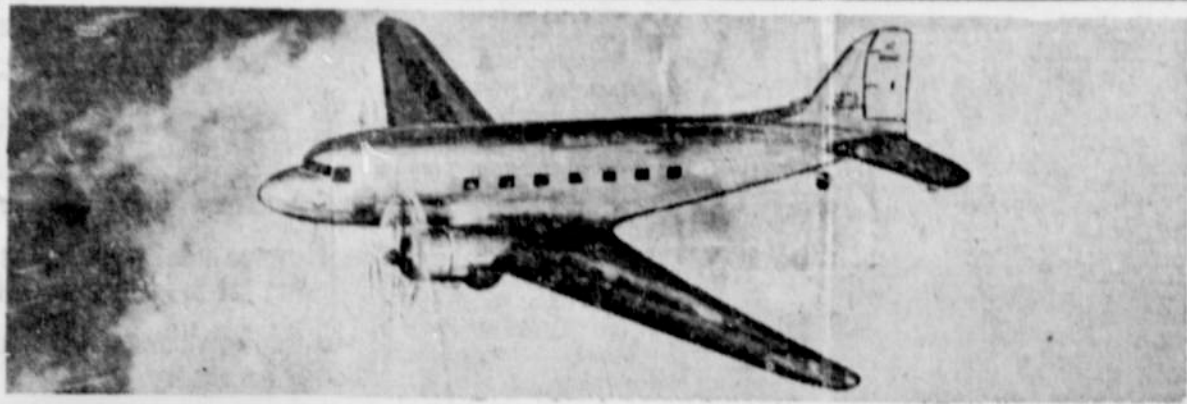
Librarian, bookkeeper, medical non-commissioned officer, stock record clerk, chief clerk, shoe repairman, message center clerk, message center chief, chaplain's assistant, ambulance driver, motor dispatcher, code clerk, accountant, administrative non-commissioned officer, first sergeant, orderly, ward technician, supply sergeant, record and shipping clerk, office machine operator, auto parts clerk and gas and oil service woman.

DAVIS—BRISTOE, JR.

Miss Ada Loree Davis, daughter of Mrs. Rachel H. Davis, became the bride of Cpl. Sidney J. Bristoe, Jr. of Merced, California, the son of Mr. and Mrs. Sidney J. Bristoe, of Central Point. They were married at the Christian Church at Sacramento on December 24.

Mrs. J. E. Hays is ill with the flu this week.

AIR EXPRESS NOW IN ITS 17th YEAR



Speeding wartime air express cargo 2500 miles overnight in U. S. airlines job today. Coordinated air-rail service extends this 3-mile-a-minute shipping service to 23,000 off-airline express offices.

COMMERCIAL air express is starting its 17th year of operation in the United States. It was on September 1, 1927, that the first regularly-scheduled air express service was begun. At some 26 cities from coast to coast, airline and express officials witnessed the inauguration of an air cargo service destined to grow from 17,000 shipments in 1928 to more than 1,465,000 shipments last year.

Many of the first mail and express ships were single-engine, open cockpit biplanes. Packages were stowed wherever there was room. Often the pilot sat on the cargo. Coast-to-coast shipments required 36 hours and 16-refueling stops compared with present-day

16-hour, overnight transcontinental flights. A 25-pound package from New York to the West Coast cost \$65 in 1927; today the rate is \$21. And for \$1.00 a 25-pound package can be air-expressed up to 150 miles. Recent rate reductions, effective July 15th, are indicative of how growing air express volume benefits the shipper.

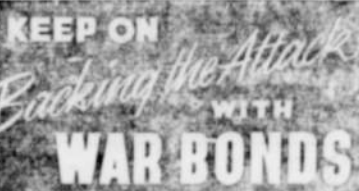
Post-war air cargo rates, it is confidently believed, will be even lower.

Pioneering in the development of air traffic as early as 1919, the Railway Express Agency has performed the ground services of pick-up and delivery of cargo for the domestic airlines since 1927.

Shipments essential to the na-

tion's war production have boosted traffic volume to the point where an average of 40 tons of air express a day are handled at present.

Cities and towns not on airline routes also are afforded the benefit of air express 3-mile-a-minute speed. By coordinating air and rail express schedules, the 23,000 off-airline offices served by Railway Express are linked to the 350 U. S. airport cities. The increasing importance of this combination rail air express is evident from figures for the first six months of this year, which showed an increase of 34.7 per cent, compared with the 1942 period. More than 191,800 shipments were handled in the combined service.



TRAVELING EXAMINER HERE

A Traveling Examiner of Operators and Chauffeurs is scheduled to arrive in Ashland, Monday, January 3, 1944 and will be on duty at the City Hall between the hours of 9 a.m. and 5 p.m., according to a recent announcement released from the Secretary of State's office. All those wishing permits or licenses to drive cars are asked to get in touch with the examiner during these hours.

Subscribe for The Miner today.

Pvt. Edna Goheen of Ogden is spending the holidays in Ashland with friends. She was formerly on the Junior High School faculty.

LOST: Pair of gold-rimmed glasses in case. Need them very badly. No questions asked. Reward. Leave word at Miner Office.

Mrs. Hattie Konop was a dinner guest Christmas Day at the home of Mrs. Beebe on North Pioneer.

Born to Mr. and Mrs. Roy Linger on December 19, a son.

SEE US FOR YOUR
INSURANCE
FARM & DWELLING
AUTO AND TRUCK
BURGLARY
LIABILITY
HEALTH, ACCIDENT
AND LIFE

J. F. EMMETT
MINER BUILDING
167 EAST MAIN STREET
Phone 5561



Our first year to serve you has been a pleasant one. May these agreeable relations continue and may 1944 bring "Peace on Earth."

HAYS PLAZA
GROCERY

Miss Virginia Freeman, daughter of Mr. and Mrs. Bert Freeman, Miss Virginia Eddy, daughter of the Rev. and Mrs. H. G. Eddy, and Miss Doris Renzema, daughter of Mr. and Mrs. D. H. Renzema, all students at Lewis and Clark College, Portland, are spending the holidays in Ashland.

Chas. Fritze has been ill with the flu-cold the past week.

HAPPY NEW YEAR

Carma and Harry Chipman
Shirley McMonigal
Mildred Campbell
Vivian Bostwick

A Prosperous NEW YEAR

VARSITY

BRING IN THE NEW 1944

PALACE CAFE