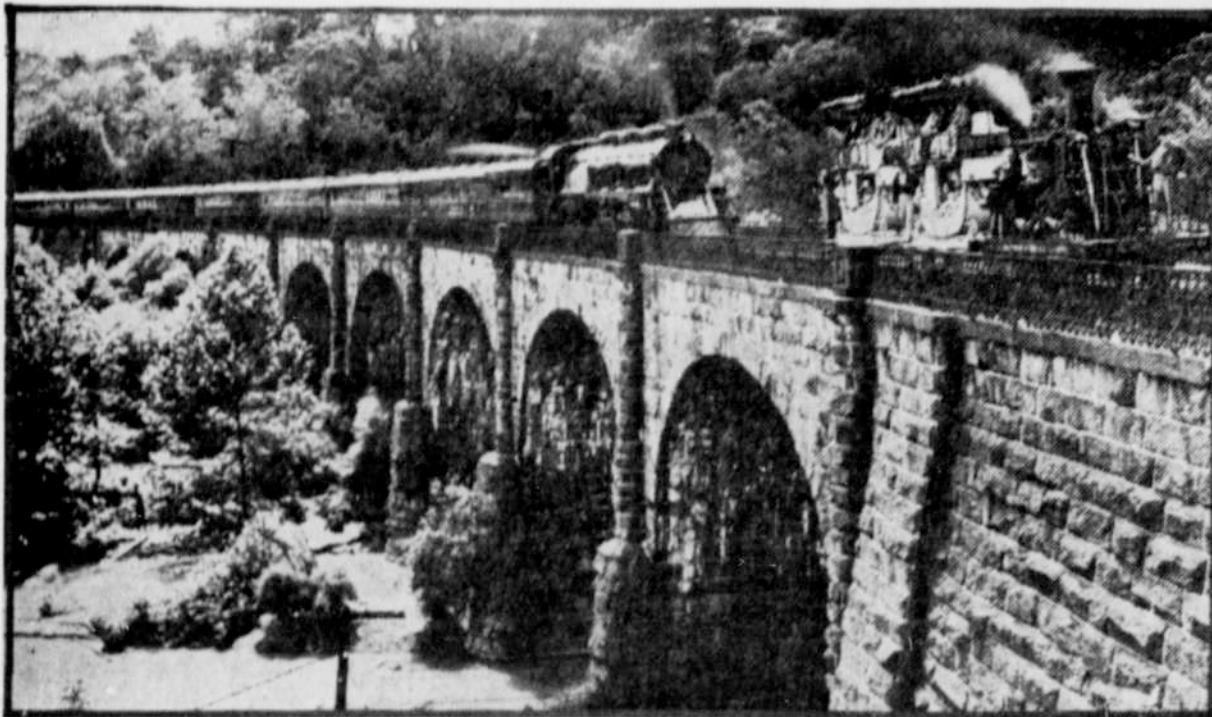


World's Oldest Stone Arch Railroad Viaduct



At Relay, Md., stands a viaduct that has rendered one hundred years of steady daily service carrying the heaviest trains. It is the Thomas viaduct of the Baltimore and Ohio line, the oldest of its kind in the world, spanning the Patapsco river outside of Baltimore. The 103-year-old Atlantic locomotive and Imlay coaches in use in the 1830s are here contrasted with the new streamlined train—the Royal Blue—that began using the bridge the other day on the Washington-New York route.

Job Hunters Flock to California



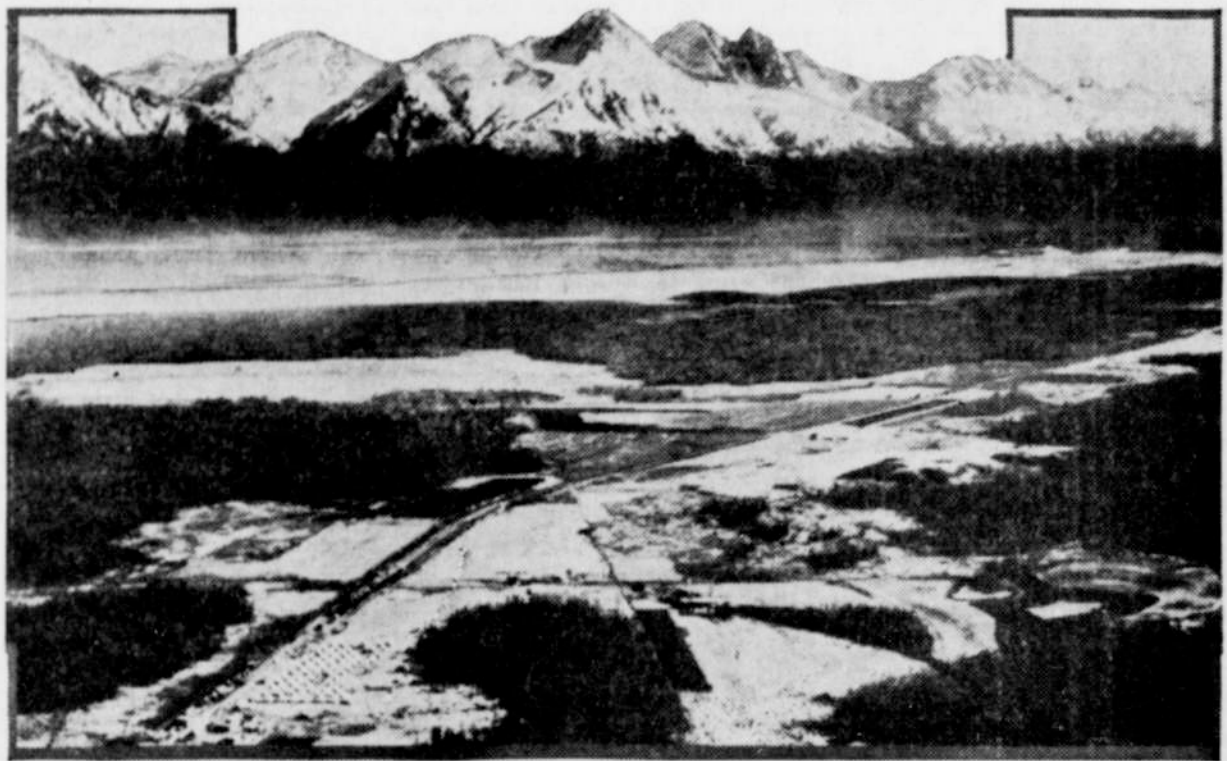
For weeks before the apple season opened in Sonoma county, California, families seeking employment were swarming into the state and crowding the auto camps. Many sold their ramshackle cars for a few dollars and were soon stranded. Here is a typical out-of-state family in the orchard country.

School Girl Wins Trip to Europe



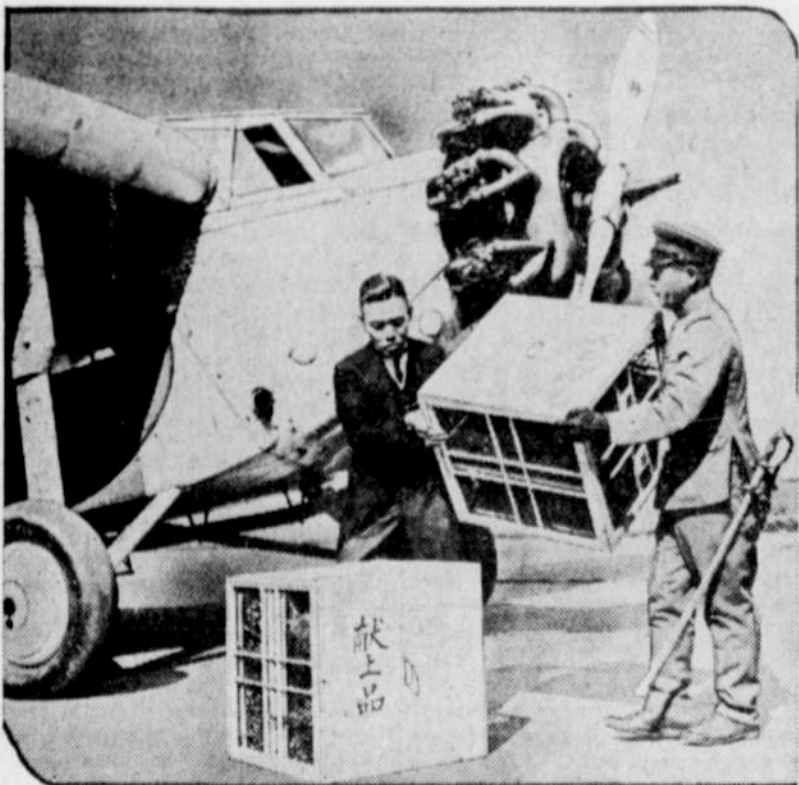
Beatrice Ann Frear, sixteen-year-old high school girl of Evanston, Ill., who won the League of Nations association high school contest, receiving her prize, tickets for a tour of Europe, from Mrs. Harrison Thomas of New York, director of the association.

Matanuska Colony as Seen From the Air



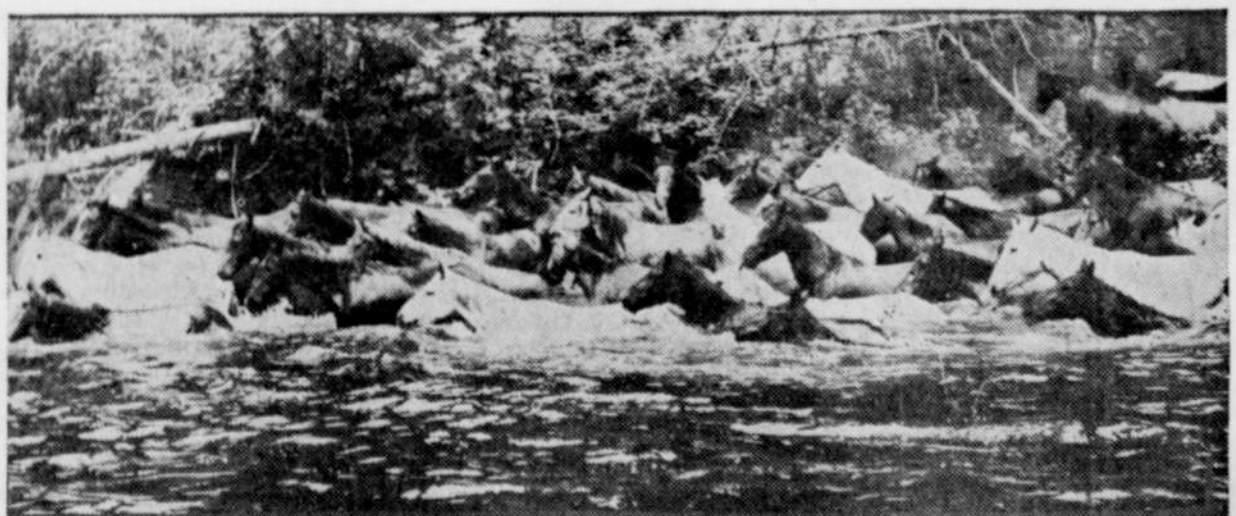
Aerial view of Matanuska colony, the new settlement in Alaska consisting of people sent there under the auspices of the United States government. Note the road in the foreground and the farm buildings above the camp. The dark patches are plowed ground.

Fireflies for an Infant Prince



More than 20,000 fireflies were caught by children in Kyushu, southern Japan, and sent by airplane to Tokyo. There they were set free in the palace grounds for the enjoyment of the infant crown prince during the summer season.

End of a Wild Horse Drive in Oregon



Untamed broncos, 92 head of them from the Steems mountains, were herded to Molalla, Oregon, for exhibition during the annual "Buckaroo." The wild horses ended their 42-day trek by swimming the Molalla river.

Inheritance Tax

Inheritance tax is a tax or duty imposed on the transfer of property at the owner's death, by inheritance or will, to an heir, devisee, or legatee.

The Redbud

The redbud grows from 25 to 50 feet high with heart-shaped, dark green leaves. The wood has little commercial value and is particularly hard and heavy.

Stepping Out

"A reckless squanderer," said Hi Ho, the Sage of Chinatown, "imagines he has found Aladdin's lamp when he is only burning the candle at both ends."