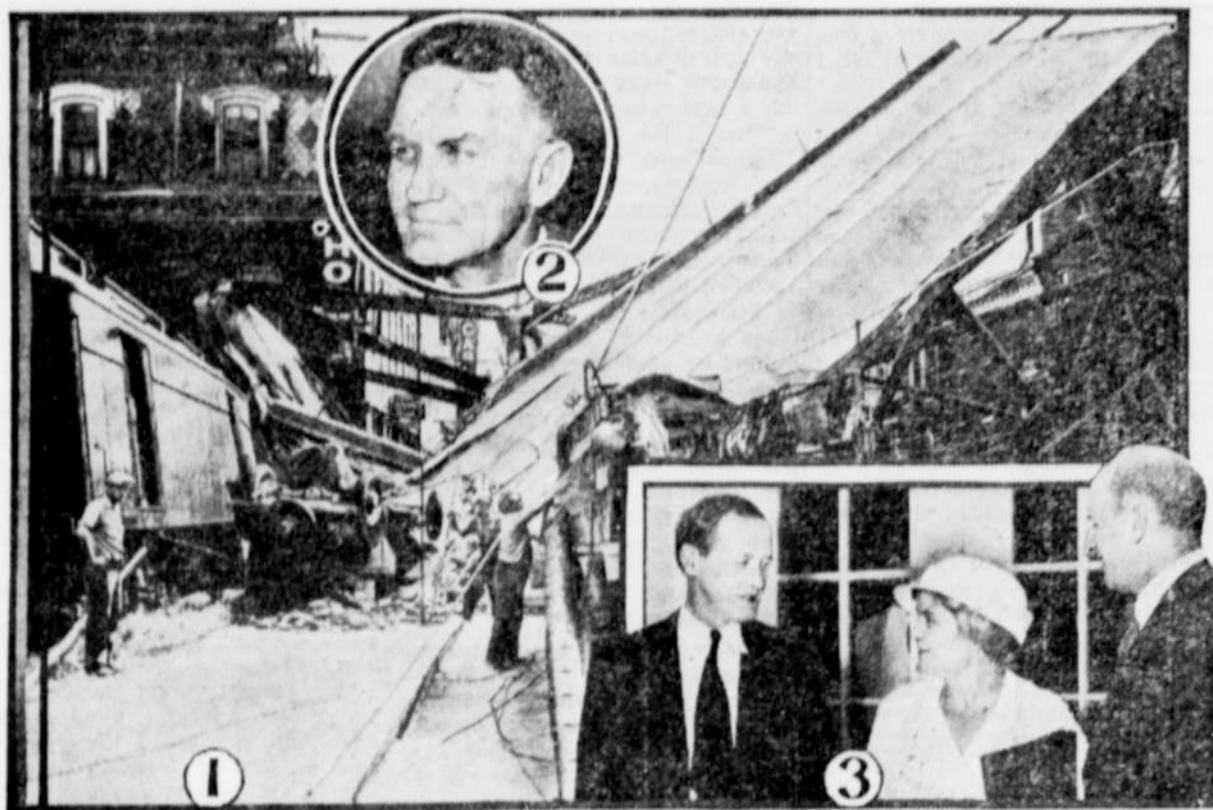


Scenes and Persons in the Current News



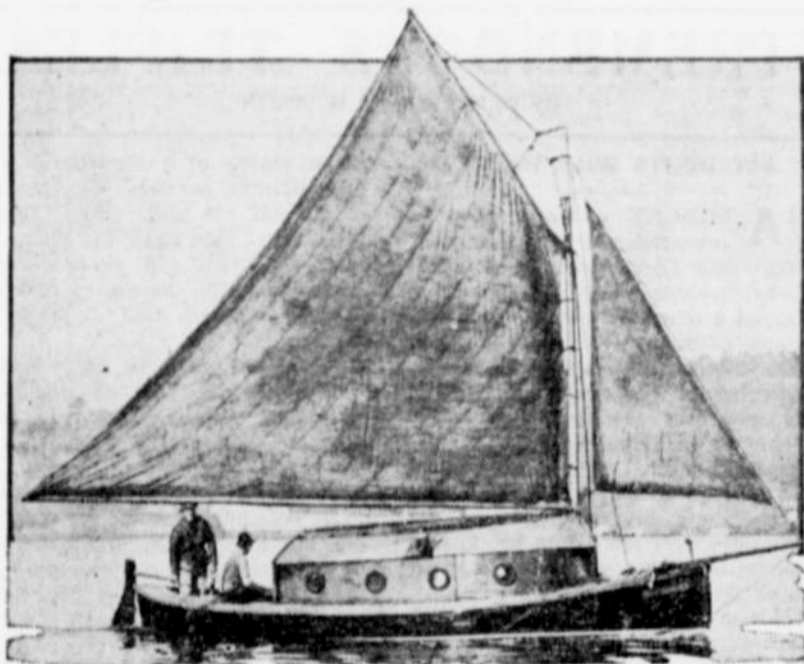
1—A Wabash railway train ran berserk, leaped a siding and struck a support of this bridge in St. Charles, Mo., collapsing it. Two men passengers of an automobile carried away with the bridge were injured, as was a woman when their car tore through the wall of her hotel nearby. 2—John Monroe Johnson, of Marion, S. C., assumes his duties as assistant secretary of commerce, succeeding Ewing Y. Mitchell who was ousted and wrote the President that "graft and corruption" abounded in the department. 3—Harry L. Hopkins (left), works progress administrator, and Henry Morgenthau, secretary of the treasury, leaving White House with Josephine Roche, assistant secretary, after discussing new National Youth administration which she will head.

Gets \$25,000—the Lucky Dog!



Nothing to be sniffed at was the \$25,000 willed to Pet, this Eskimo spitz, by his late mistress, Miss Margaret McDermott of Chicago, who asked that he be placed in the home of a woman who loved dogs. Pet is now the charge of Mrs. Hulda Rhode and her grandson Lawrence Dennis, shown here, who were friends of Miss McDermott.

Taking Amusement to the Eskimos



Setting out from Seattle, this little 24-footer, the Happy-Go-Lucky, pointed for Alaska where, in innumerable inlets and coves she will provide amusement for the Eskimos, but primarily for the fishermen, trappers, hunters, cannery and prospectors of the Far North. Capt. Gordon Clements and Mate J. R. Dobbs are carrying a complete equipment of motion picture apparatus and thousands of feet of film. Something new in the show-boat line.

F. D. R. IN BRONZE



This forceful bronze bust of President Roosevelt, now on display in a New York art gallery, is the work of Jo Davidson.

Give This Little Girl a Big Hand



It takes a sturdy arm to operate this hand-powered boat built by Paul Larson at Little Falls, Minn., as little Shirley Ann Larson is shown doing it.

Many Islands in Georgian Bay

Georgian bay is an extension of Lake Huron; it is about 120 by 50 miles in area, and dotted with more than 30,000 islands, the largest of which is Grand Manitoulin. The bay is an indentation in the coast of Ontario and is entered by a channel 20 miles wide.

DUKE BEACH GUARD

Here is Duke, full-blooded bulldog, owned by Kenneth Grossmiller of Dalles, Ore. Duke is trained to swim out to a drowning person, with the end of a piece of rope in his mouth and the other end attached to the shore. He also is able to tow a person hanging to his harness.

Massachusetts' Famous Lake

Lake Chargoggagogmanchauggagoggchaubunagungamaugg, which is one of the largest in Massachusetts, is located in the southern part of the state, in Worcester county, just across the border line of the extreme northeastern corner of the state of Connecticut. The spelling of the name is usually abbreviated to the last six syllables on the map, and means, according to Sargent's New England Guide: "You fish on your side, I fish on my side, nobody shall fish in the middle."



RULES CHERRY FETE



Genevieve Pepera, Manistee blond, was chosen from western Michigan's fairest to reign as queen over the national cherry festival at Traverse City, July 17, 18 and 19.

"Hara-Kiri"

Hara-kiri is defined: "A Japanese method of suicide by ripping open the bowels, practiced formerly by daimios and military officers." The word is often incorrectly spelled hari-kari and harri-karri.—Literary Digest.

MAP WOMEN'S AID

Mrs. Ellen S. Woodward, assistant program director, who is busy in Washington with plans for employing 500,000 women with part of the President's \$4,880,000,000 works-relief fund.

Control in Asia

Asia, whose 20-odd countries contain 31 per cent of the area and 50 per cent of the population of the world, consisting chiefly of yellow and brown races, has 60 per cent of its land controlled by white nations—Russia, Great Britain, Holland, France and the United States.—Collier's Weekly.

