

CHEZ SUZY PLAYS SANTA CLAUS IN JANUARY!

THE MOST AND BEST FOR YOUR EXTRA SPENDING MONEY WHILE THESE BARGAINS LAST



BEST WISHES FOR A HAPPY NEW YEAR



WOMEN'S TOWN AND COUNTRY APPAREL CANYON ROAD AT WEST SLOPE

YOU...an Interior Decorator

By BILL SIEBERTS



Home Counseling Department Beaverton Furniture



TELEVISION SET UP

If and when television comes to your home it will pose a new problem in furniture arrangement. The reason is obvious. With radio your conversational groupings are closer together because "seeing" is not involved. In television the set must be a comfortable distance away. (This distance varies with different sets and screen sizes.) One very attractive way to group your furniture is illustrated above. Note how it follows the pattern used in many homes where the fireplace is the center of interest. This set-up is ideal for video-viewing... but you no doubt can think of many others. End tables and coffee tables will be much in demand in this type of arrangement because

your friends will "stay put" longer and will need the space for refreshments and cigarette trays.

You can easily make this new medium of entertainment fit into your living room decorating scheme with the proper furniture and placement. You'll find many comfortable chairs and sofas in our store from which to view your favorite programs.

And remember, our ideas and suggestions are also yours for the asking. Drop in and talk it over with us... and together we'll work out ideas for your own specific needs.

... don't forget, our Home Counseling Service is for your use.

BEAVERTON FURNITURE

For the Modern House
CApitol 2380 Phones Beaverton 4002

HAPPY NEW YEAR 1950

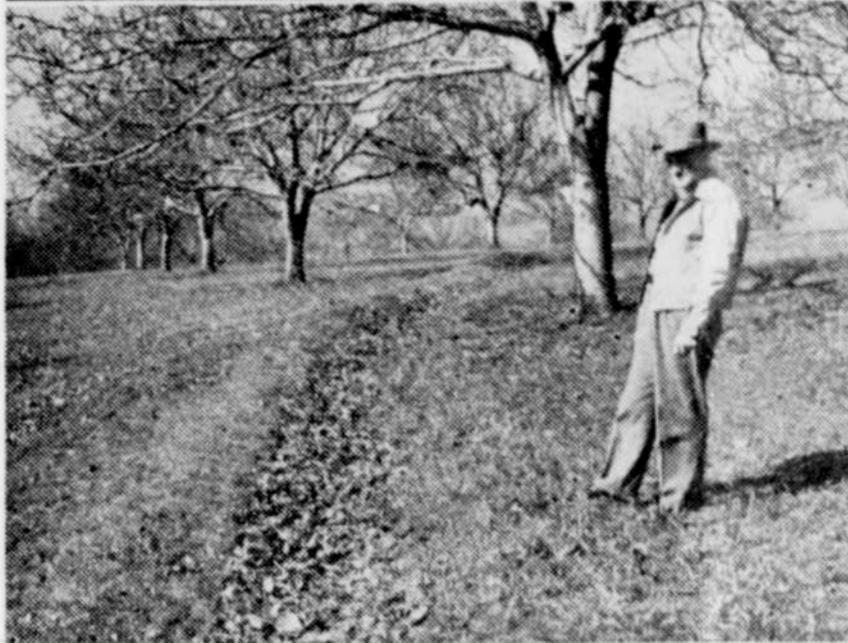


MAY THE SEASON'S CHEER FILL YOUR HEART AND HOME WITH HAPPINESS AND GOOD WILL!

PAUL SCHAEFER

BOB WARNER

BEAVERTON BARBER SHOP



SOIL CONSERVATION as an insurance for the future strength of the good Mother Earth was told in story and in pictures.



TVMET... or "Tualatin Valley Means Fine Tobacco" might be the chant of Joe Begne, tobacco grower of Tigard. Readers learned to their surprise that a virile strain of tobacco blooms and ripens in this gently climated area. Joe stoutly avows his tobacco leaves produce the finest smoking tobacco he has found so far. But then, Joe is a stout man!



LIKE A PAGE FROM A FORGOTTEN book was the look we directed toward this Tigard landmark, ye olde smithy shop. Horseshoeing is practically a lost art but the venerable village blacksmith, William L. Arriss keeps on, abreast of the times.

NOW VERNONIANS

Mr. "Mac" McCool of Vernonia, Oregon, was a visitor at the E. A. Harvey home on Laidlaw Road on Sunday, December 11th.

The McCool family formerly resided on McDaniel Road in the home now occupied by Mr. and Mrs. Paul Smith.

TAX HELP TO FARMERS

Forest Grove and Hillsboro will be visited the first two weeks of January, 1950, by deputy collectors who will assist farmers in filing Forms 1040ES, declaration of estimated tax for calendar year 1949.

Schedule for Forest Grove, in the city hall, will be January 3. In Hillsboro, the dates are from 11th of January to 13 inclusive and on January 16, 205 Commercial National Bank Building.



POULTRY OPERATIONS FROM the egg to the final axe was told in an account which revealed the life of some 3800 White Leghorn chickens at Gerald W. Avery's farm, about one and a half miles out of Tualatin.

for 1950-

Happy Days



MR. and MRS. L. C. HARRELL

HARRELL BEAVERTON STUDIO



It's the New Year Again...

Whatever your 1950 New Year's resolutions may be, we know they were made in the high spirit of hope and ambition. Success to all of you.

O. R. NICHOLSON & SON

SCRAP METAL DEALER

Phone Beaverton 4381

Near Union Oil Depot - Bertha-Beaverton Hiway

Season's



Greetings

A Happy New Year in the grand old way is our hope for you.

1950

DEAN'S REXALL DRUG

Now you Know!

The answers to everyday insurance problems* By Leonard Adams



QUESTION: A young friend of my son's drove up into the hills on a fishing trip a couple of weeks ago. He left a valuable rifle and some expensive fishing gear in his parked car while he fished along the banks of a stream. When he returned he found the car had been broken into and the rifle, fishing gear and some other items stolen. He was not insured so he had to stand the loss. However, I have a theft policy and I'd like to know if it would protect me in a similar situation.

ANSWER: Your insurance man can interpret your particular policy but as a general rule, most Resident Theft policies written during the past several years would protect you fully under the circumstances described, if the "theft away from the premises" clause is included.

* If you will address your own insurance questions to this office, we'll try to give you the correct answers and there will be no charge of obligation of any kind.

Leonard Adams

"Personal Insurance Service" Phone 3831 Any Time 73 Broadway, Beaverton

THAT'S NO PLACE FOR ME!



Get the greatest return from your equipment investment by keeping it in top condition! Good care of your John Deere Farm Equipment will not only eliminate the risk of troublesome, untimely delays but will also assure longer, more efficient performance.

If it's parts you need, see us. We sell only genuine John Deere parts. For reconditioning service, you'll find ours efficient and economical. See us for further information.

HESEL'S TRACTOR & EQUIPMENT CO.

121 S. E. Morrison Street Portland 4, Oregon Phone EAst 4939

WE SELL ONLY GENUINE JOHN DEERE PARTS