

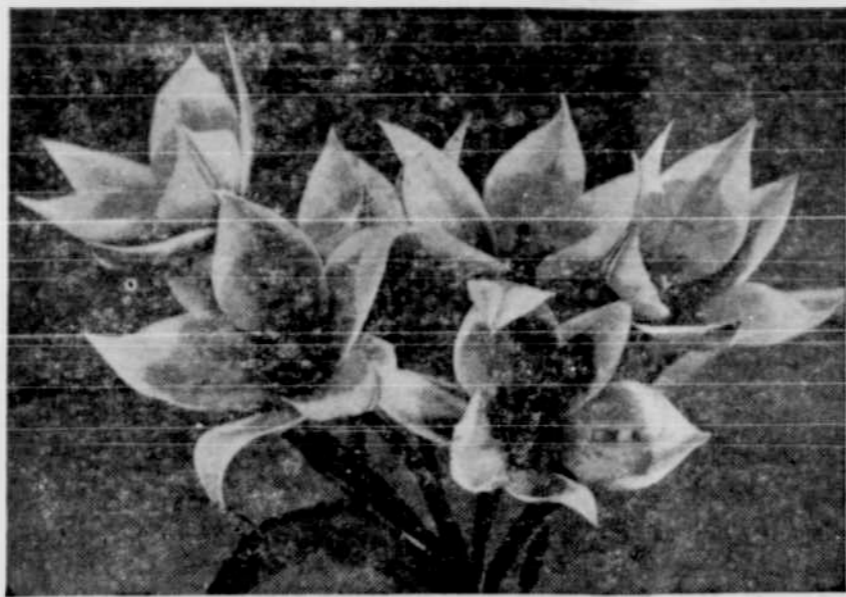
Spectacular Hybrid Tulips Thrive In Rock Gardens

By F. F. Rockwell and
Esther C. Grayson

The early-flowering Botanical or Species Tulips have always been a joy, especially to rock gardeners, but since the war these modest little fellows have begun to take a more prominent place in the garden scene.

The reason for this is that a whole new race of sub-species and hybrids have come on the market. Each year more named varieties appear in the catalogues, and those who have been lucky enough to secure bulbs and to grow them, will, we are sure, bear us out when we say that few early spring flowers are more delightful.

One of the nice things about the species and species hybrids is that



PLANTINGS OF TULIPA TARDA (Syn. dasystemon) give a mass color effect. They are a dwarf species and each bulb produces several broad-petaled white blossoms with golden yellow centers which open flat at midday. A rock garden specialty.

the earliest flowering ones begin to bloom before the daffodils, and continue for six weeks or more, so that by selecting early, medium and late bloomers one can have Species Tulips all through the spring.

Because they are naturals for planting among rocks, mice and moles are less apt to reach them, for moles seem to like nice soft ground and a long run. At least this has been our experience. Though we have lost several valuable plantings of Darwin and Breeder Tulips to the rodents, not one of the little Species Hybrids, planted among rocks, has been lost.

Then too, the Botanicals and their descendants can be planted deeper (six to eight inches) and will go on year after year without transplanting. They increase satisfactorily without lifting. In four years in many varieties we have double or treble the number of blooming bulbs originally planted.

The Kaufmannianas

Most appealing perhaps of all the Species Hybrids are the Kaufmannianas, a large number of which are now available. Many of them are cream, primrose, buttercup or golden yellow with deep bands of carmine color on the outer petals. The flowers have a crisp stamina all their own and on cloudy days, in the morning and late afternoon, they remain partly closed and look like graceful bi-colored cups rising on rather short stems from healthy gray-green foliage. At midday, however, or when the sun shines brightly on them they open wide (like the species from which they come which is sometimes called the Water-lily Tulip) or like the low-growing wide open tarda (syn. dasystemon). When wide to the sun, their starry blossoms show only the interior color of cream or yellow. A bed of Kaufmannianas therefore gives double pleasure in that it can and does change its appearance frequently and completely. It is hard to decide which aspect is most effective.

The First (very early), Bellini, Elliot and Gaiety (quite late) are cream or white with cherry markings on the outer petals, Caesar Franck, Aurea and Joseph Kafka are yellow; Fritz Kreisler and Shakespeare salmon to apricot. Gluck is distinguished by its wonderful foliage inherited from T. greigi, the leaves being uniformly marked with dots and dashes of purplish red. Vivaldi, also with marked foliage, is a tall-growing late variety.

Another group of Kaufmanniana Hybrids are uniform red, and outstanding among these is the very early Scarlet Elegance, a variety of light scarlet, low growing and arrestingly beautiful. Other reds are Brilliant and Alfred Cortot.

We can unreservedly advise that you devote a large area in the sizeable rock garden or among natural large rocks to the Kaufmannianas. They will start to bloom on or before April first and from then on for two weeks they give a wealth of colorful bloom which cannot fail to please the bulb-lover.

Fosterianas

Passing from the modest yet sturdy and colorful Kaufmannianas, we come to the Fosterianas which are almost blatant in their compelling brilliance. Here we have an entirely different type of flower. These taller growing glowing red tulips are very large and extremely showy. Everyone knows the famous, burning Red Emperor (Madame Lefebvre), with its great poppy-red, black-centered cup borne on strong twenty-two inch stems. It is believed to be the largest tulip in existence and is certainly one of the most colorful. Blooming as it does with the daffodils, when no one is expecting large tulips, it often brings strangers into our garden who have seen it from the road and who come to ask what on earth it can be so early in the season. The petals of the flowers are so glossy that we have tried in vain to get a kodachrome picture of it without a sharp highlight which, in the photograph, looks like insect damage. Looking at the flower itself, however, one is lost in admiration at Nature's perfection.

Other Fosteriana Hybrids are Cantate, another strong-growing vermilion red with huge blossoms and glossy foliage, and Princess with flowers very much like Red Emperor, about 10 days later, but borne on twelve-inch stems. This is a good selection for the rock garden while the other two taller ones will

grace a spot in the spring border.

Others

Eichleri and its variety excelsa are other large scarlet species which are worth growing, while praestans bears several light scarlet flowers on each stem.

Fusilier is a praestans hybrid which is justly famous. Somewhat showier than the species, the several flowers per stem are orange-scarlet. We have planted it with Scarlet Elegance, which is one of the first of the Species Hybrids to bloom. Fusilier is a little later, slightly taller and not quite the same shade of red. It is a comfort to see the Fusilier blossoms appearing just at the moment you



- CHILDREN
- POPULAR
- CLASSICAL
- ALL SPEEDS

You Can Always Find Your Favorite Tune.

WEST SLOPE RECORD AND GIFT SHOP

Phone BEacon 7748
Open Friday Evenings
8903 S. W. Canyon Rd.

MR. GUINEY PIGG



Don't Be A Guinea Pig!
You can depend on us for that "new look" paint job.

BEAVERTON BODY SHOP
259 N. W. Canyon Road
Phone Beaverton 4162

are feeling let down because the last Scarlet Elegance has shattered.

For the smaller rock garden nothing can be more dainty and graceful than tall, slim Clusiana, white with rosy bands. This miniature tulip is shaped rather like a tall stemmed Aqua Vite glass and has a similar elegance. It blooms late.

Another dainty species is Biflora, very early flowering. The narrow lanceolate foliage supports a 6" stem with two white star-shaped flowers.

Tarda (syn. dasystemon), mentioned above, is very dwarf and since each bulb produces several broad-petaled white blossoms with golden yellow centers which open flat at midday, a close planting of these gives a real mass of color close to the ground. By all means use this in the rock garden.

If you want something really unusual, choose Acuminata with such narrow tapering petals that each ends in a thread-like point. The color is yellow streaked with light red.

Sylvan Patrons Discover Square Dance at Roundup

It was a family round-up at the Sylvan School November 10th from 5:30 to 10:30. Brothers and Sisters, Dads and Mothers, Aunts and Uncles as well as Grandparents—away over 500 of them came. Some in gingham, some in bright plaid shirts and some in gorgeous cow-girl and cowboy outfits. There was something for everyone including Grandpa who liked to divide his time at the Roy Rogers Movie, (shown twice) in one gym and the square dancing in the other gym.

One feature was the Post Office Bar where packages from all over the U. S. and Alaska (sent in by friends at earlier request) were sold unwrapped for 25c. There were pleasant surprises and some disappointments so next year each will be marked for man, woman or child.

"Chuck Wagon Charley" sold home made donations of cakes, pies, candies as well as home canned fruit and jams.

Dart games, horse shoe pitching, and bean bags gave plenty of chances to show skill in straight shooting and the other kind too.

How much did we make? Enough to keep us from using red ink on our records. It was an event to bring everyone together and see that they all had a wonderful evening.

The square dancing, so many enjoyed, is being continued under the sponsorship of the Sylvan PTA on Thursday nights December 1st, 8th, 15th, January 6th, and 13th. It is under the capable instruction of Mel and Irene Cates.

REFRIGERATORS JOIN STREAMLINED RANKS

In keeping with the modern trend in home furnishings, refrigerators are now being streamlined and tailored to feminine wants. To prove our statement, take a look at the 1950 International Harvester now on display at Terry's Furniture.

Steek features of the new International Harvester, include freezers that store up to 50 pounds of frozen foods.

"Egg-O-Mats" that politely hand you an egg when you want one, winter-summer controls that keep operation attuned to weather conditions, and many other up to date features.

PANEL DISCUSSION
The Sylvan PTA meeting on November 8th enlarged on Webster's definition of cooperation—in a panel discussion with Mrs. Green, 5th grade teacher, conducting.

The other teachers, Mrs. Swift, 8th, Mrs. Brookhart, 2nd, Mrs. Fisher, substitute and Mrs. Gary, the nurse with Mrs. George Redpath, one of the happiest and well known of parents, started with the Parent and Child cooperation. It was well covered and since the Collins View School recently showed such a lack of cooperation between parents and the school we should be broad-minded and hear both sides of problems before passing judgement only on our youngsters sayso.

YOU...an Interior Decorator
By BILL SIEBERTS



BE YOURSELF!

A friend of ours recently decided to redecorate her living room. She turned the room into the exact replica of a beautiful magazine illustration... even to the color scheme and placement of furniture. It cost a pretty penny. Now she doesn't like it.

Why? Because it lacked something very important... individuality! She failed to realize that the room in the magazine illustration, although beautiful, was created for someone else. The point we're trying to make is this... Be yourself. Use colors and types of furniture YOU like.

Never, in furnishing a living room, or any other room for that matter, ask yourself this question: "Will my friends like it?"

After all, you're the one who's going to live in and enjoy the room.

The illustration above, for example, although cozy and livable, should not be copied. As we've said before, these columns and illustrations are intended only as a springboard for your imagination. Use that imagination, you'll be pleased with the results.

Perhaps we can be of more help personally. If you run into a problem in decorating or furniture placement, why not stop in and discuss it with us. We have the experience and the knowledge, and it's yours for the asking.

BEAVERTON FURNITURE
For the Modern House

HAY - FEED - POULTRY SUPPLIES
FISHER THORSEN PAINTS
PLUMBING AND ELECTRICAL SUPPLIES

J. B. Imlay & Sons
HARDWARE
ALOHA, ORE. ★ PHONE 6311

For Results Try Our Classified Ads

FREE ESTIMATE
ON
RADIANT HEAT
Hot Water Circulating Heat
with baseboards, wall boards and conductors

TUALATIN PLUMBING & HEATING
P. O. Box 232, Tualatin Phone Tigard 3359

For Furniture or Fixtures
USE
CHAPCO
RESINIZED
Board
NATURE'S WOOD IMPROVED 100 FOLD

BETTER
EASIER
CHEAPER

THE ORIGINAL WESTERN HARDBOARD

- ⊙ For cabinet paneling
- ⊙ For cabinet linings
- ⊙ For shelf partitions
- ⊙ For drawer bottoms
- ⊙ For table tops
- ⊙ For facings

CHAPCO comes in 4' x 8' dimensions of three thicknesses—1/8", 3/16", 1/4".

For any store or home furniture or fixture construction, investigate tough, hard yet workable

CHAPCO BOARD

KINGSLEY - BEAVERTON LUMBER CO.
3 S. W. Farmington Road Phone 3201

ELECTRIC MOTOR REWINDING and Repairing
LIGHT MACHINE WORK
ED. MARTY
One Mile North of Huber

YOUR HOME
YOUR CAR
YOUR ENGAGEMENT
YOUR EDUCATION
YOUR RETIREMENT

Let regular savings be the compass which guides you through the years from youth to the age of retirement.

Only perseverance and sound planning can assure smooth sailing. We are at your service. So open an account today!

The Commercial Bank of Oregon
8848 S. W. CANYON ROAD WEST SLOPE
MEMBER FEDERAL DEPOSIT INSURANCE CORPORATION

CHRISTMAS TREES

All Sizes ---
Excellent Selection

INSPECT THEM ON OUR LOT
Corner Mill Street and Canyon Road
(Next to Highway Chapel)

WE WILL DELIVER
WHOLESALE and RETAIL

DAVID IVEY
Phones: Beaverton 4520 - Portland, CHerry 4871

Here's how to tell friends you care
send "unforgettable" Hallmark Christmas Cards
They say just what you want to say—the way you want to say it
Come see them soon—while our collection of Hallmark Cards is so complete!

WE GIVE S&H GREEN STAMPS

DEAN'S REXALL DRUG
Phone 3774 Beaverton, Ore.

I CUT YOUR FOOD BILLS

JUST ARRIVED 1 TON

DELICIOUS FRESH FROZEN
BABY LIMA BEANS
READY FOR YOUR LOCKER

15c PINT
(Locker Holders Only Please)

WEST SLOPE FOOD BANK
Telephone, Portland BR. 4251