

## THE DRUMS ARE BEATING!

The lines are forming. The pressure is building up. The drums are beating at the state legislative session, being held at Salem. Items of interest to Washington county will be presented as they are available, in this column.

### FLASHBACK 30 YEARS

Thirty years back, one of the old-time baseball heroes well remembered in Beaverton was Vias Shepard.

Shepard was active in community affairs and was prominent in all the big times in the east end of the county. Fourth of July celebrations were his particular days to shine and he had a regular place in the famous Beaverton military band when C. E. A. Holman was director.

Now he's renewing acquaintance with the Washington county delegation, as representative from Columbia county.

### WHO ALSO SERVE

Helping to carry out the tasks of the county delegation are the following three secretaries, who also serve.

Secretaries for the 1949 session are: Senator Patterson, Ruth Query; Representative Fisher, Gloria Smith and Representative Johnson, Genevieve Fonder.

They are paid on a straight-time basis, from the day of starting to the end of the session, including Sundays and holidays.

### CARRYING ON THE FIGHT

A man can't do it all himself, no matter what significant fight he carries on. But Representative Earl E. Fisher, back to Salem, is picking up where he left off when his term as state Senator expired in 1943 and he is determined to carry on the fight for four-lane traffic on Tualatin Valley highway.

Results of the campaign he began in 1939, as representative, and continued, 1941-43, as state senator, showed in the extension of four lane traffic from the Mult-

nomah county line through the West Slope district.

Back in the legislative arena again, Fisher wants the four-lane job completed as far as Gaston, to bring safer transportation for an estimated population of some 60,000 people in the county, many of whom use some part of this congested thoroughfare every day.

Fisher will need help to put this over and is asking clubs, civic groups and individuals to write him, care of the House of Representatives, Salem, Oregon, and back him up.

### PEOPLE'S PIPELINE

A direct pipe-line from the state legislature to every person in Washington county has been set up by the county delegation.

All copies of House and Senate bills for the 1949 session will be available for inspection by the public residing in eastern Washington county at office of George Thynge, 124 Broadway, Beaverton. Calendar of bills, with titles, may be found at Findley Milling company, 16 S. E. Farmington Rd. Beach's Market, 58 E. Broadway

and Speedy Freeze, corner West Street and Tualatin Valley Highway, all in Beaverton.

Likewise, calendars will be available for inspection with Harry Ellander, at Progress, and Anna Krugar, Junction Road, East Beaverton.

### HUNTERS AND TRAPPERS

Hunters, fishermen and trappers are about to become the object of a squeeze which one legislator believes is designed to catch "the little fellow," who buys a license for less than five outings a year.

Game legislation in the offing proposes to raise hunting and fishing fees from \$3 to \$7 each.

Any outdoors fan who might have something to say about how such a proposal would affect them had better sit down with pen in hand and let his representatives and senator know his feelings.

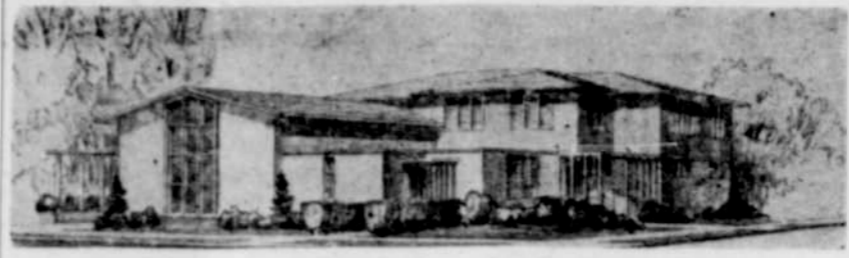
There's a lot of steam behind the proposal and only a determined protest will slow the maneuver, even though there are, conceivably, other avenues of approach by which the game commission might garner the necessary shekels to prosecute its long range program.

### CHOIR REORGANIZED

The Methodist Church Choir has recently been reorganized under the leadership of Wesley Bertrand from the music department of Cascade College, Portland.

### NEW SUNDAY CLASS

A new Sunday School class has been organized in the First Methodist Church for boys in the 7th and 8th grades. Mrs. Mary Groves is teaching the class.



## Pegg's Mortuary

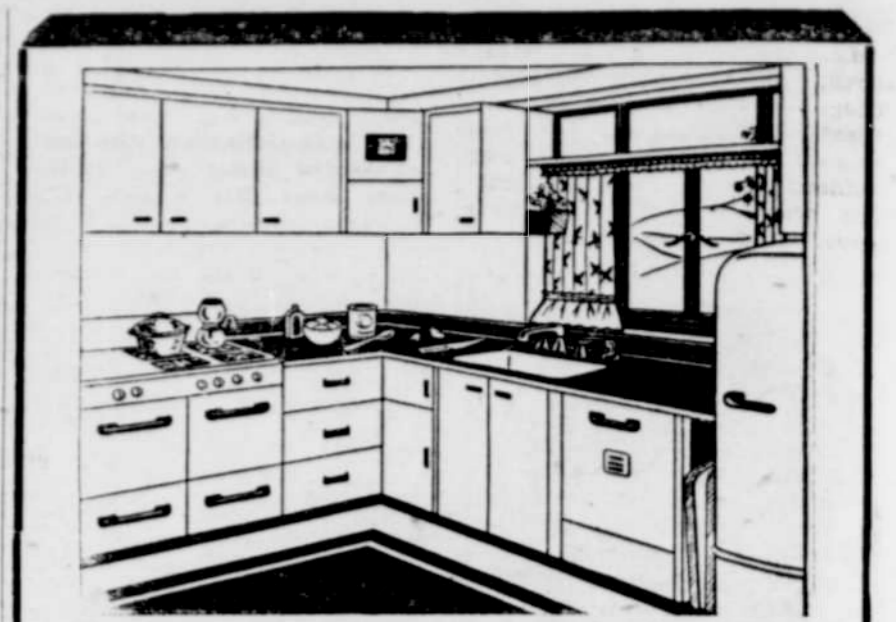
BEAVERTON, OREGON

Your community mortician since 1910

Phone 3411

W. E. PEGG

Wm. SPEARS



## YOUNGSTOWN SINKS

Will give utility and beauty to your kitchen. McCready's features all styles and prices.

(TERMS CAN BE ARRANGED)

## W. J. McCREADY LUMBER CO.

Old Canyon Road Beaverton Phone 3821



## SAFEWAY REPEATS this t-e-r-r-i-f-i-c SPECIAL!

# PICNICS

# 39<sup>c</sup> LB.

If you "got in" on our last big sale of those famous-brand picnics you know why this is grand news. Thousands of our customers raved about these pork shoulder hams (picnics) for days. That's why we are so pleased to be able to repeat this big value-giving event. Don't miss out on it—Come early!

Featured are Rath's Tend'r Picnics, Oscar Mayer, Morrell's and Wilson brands. Some stores may not have all brands mentioned—but your satisfaction is guaranteed on every picnic!

### OTHER EXCEPTIONALLY GOOD MEAT BUYS!

## Eastern Bacon

Lean, mild BY THE SUGAR CURED PIECE LB. **53<sup>c</sup>**

Round Steaks	Guaranteed Beef	Lb. 79 <sup>c</sup>	Morrell's Yorkshire	Leg O'Lamb Roast	Lb. 69 <sup>c</sup>
Beef Short Ribs		Lb. 35 <sup>c</sup>	Sliced Bacon	Lamb Chops	Select Small loin Lb. 89 <sup>c</sup>
Standing Rib Roast	Waste Free	Lb. 65 <sup>c</sup>		Lamb Chops	Rib Cuts Lb. 75 <sup>c</sup>
Fresh Ground Beef	Lean Beef	Lb. 49 <sup>c</sup>	PER LB. <b>55<sup>c</sup></b>	Lamb Shoulder Roast	Lb. 49 <sup>c</sup>
Fresh Oysters	Selected	Plat 75 <sup>c</sup>		Breast of Lamb Stew	Lb. 19 <sup>c</sup>
Silver Salmon Steaks		Lb. 69 <sup>c</sup>		Pork Shoulder Roast	Lb. 49 <sup>c</sup>
Halibut Steaks	Inexpensive	Lb. 55 <sup>c</sup>		Fryers and Fowl	Ready for the pan Lb. 79 <sup>c</sup>

"OVEN-READY" TURKEYS—HENS, Lb. 79<sup>c</sup> TOMS, Lb. 69<sup>c</sup>

### IN OUR PRODUCE SECTION

## Southern Grown YAMS

To Go With Those HAMS! LB. **10<sup>c</sup>**

Candied yams are good, but exceptionally good when served with smoked pork. What a coincidence that smoked picnics are on special now in the meat section.

U.S. No. 1. Netted Gem Potatoes	10-Lb. Sack	55 <sup>c</sup>	Red Grapefruit	From Texas Lb.	10 <sup>c</sup>
			D'Anjou Pears	Juicy Green, Ripen Lb.	10 <sup>c</sup>
			Crisp, Tender Carrots		8 <sup>c</sup>

Grapes Emperors 2 Lbs. 29<sup>c</sup>

Dry Onions Yellow-Mediums This is good stew and soup weather. 10-lb. sack 49<sup>c</sup>

Rutabagas Have you tried them mashed? They're good! Lb. 8<sup>c</sup>

Apples! Apples! Juicy, Crispy, Full-Flavored Ortleys Lb. 10<sup>c</sup> Winesaps 5-Lb. Bag 59<sup>c</sup>

Squash Marblehead & Hubbard Enjoy this fine squash now. -lb. 8<sup>c</sup>

## Luscious APRICOTS

No. 2 1/2 can 19<sup>c</sup>

VALLEY GOLD BRAND—WHOLE ONES—UNPEELED

Edwards Coffee	1-lb. can	47 <sup>c</sup>	2-lb. can	93 <sup>c</sup>
Canterbury Tea Bags	Pkg. of 48	49 <sup>c</sup>		
Noodle Soup Mix	Lipton's 3 Pkts.	29 <sup>c</sup>		
Cream Corn	Country Home No. 303 2 cans	29 <sup>c</sup>		
Fancy Tender Peas	Sugar No. 303 Belle can	16 <sup>c</sup>		
Green Giant Peas	Fancy No. 303 pack	19 <sup>c</sup>		
Sunnybank Margarine	Lb.	34 <sup>c</sup>		



### Save With Bag Coffees

AIRWAY	1-lb. bag	43 <sup>c</sup>	3-lb. bag	\$1.28
NOB HILL	1-lb. bag	45 <sup>c</sup>	2-lb. bag	89 <sup>c</sup>

## Green BEANS

With no strings No. 2 cans 2 for 27<sup>c</sup>

GARDENSIDE BRAND—EXTRA STANDARD—NEW PACK

Crackers	Pirates' Gold Lb.	29 <sup>c</sup>	2-lb. Lb.	51 <sup>c</sup>
Kraft Dinners	Macaroni and cheese in 7 min. Pkg.	10 <sup>c</sup>		
Spaghetti	Franco-American 2 Cans	25 <sup>c</sup>		
Royal Pudding	Vanilla-Chocolate or Butterscotch Pkg.	7 <sup>c</sup>		
Salad Dressing	Duchess Pt. 35 <sup>c</sup> Qt.	62 <sup>c</sup>		
Wesson Salad Oil	Mild, pure, sparkling Qt.	65 <sup>c</sup>		
White Magic Bleach	1/2-Gallon	17 <sup>c</sup>		



### Mrs. Wright's BREAD

Guaranteed fresh White or Wheat

1-Lb. Loaf	14 <sup>c</sup>
1 1/2-Lb. Loaf	21 <sup>c</sup>

## Tomato CATSUP

2 bottles 29<sup>c</sup>

RED HILL BRAND—TO PEP UP MEAT DISHES, ETC.

Oregon Certified Marshall STRAWBERRY PLANTS Grown in Eastern Oregon Write for price list Agricultural Research Nurseries Route 2, Box 72, Payette, Idaho

### Frosted Donuts

That We Feature COCOANUT - MAPLE CHOCOLATE - ORANGE

TUESDAY SPECIAL WHOLE WHEAT DONUTS

FRIDAY SPECIAL WHOLE WHEAT and DEVIL'S FOOD POTATO DONUTS

Open 3:30 A. M. to 7 P. M. Closed Sundays

DONUT KETTLE & COFFEE SHOP Canyon Road at East "Y" Phone Beaverton 4575



### KEX Covers the LEGISLATURE

Hear "SPOTLIGHT on SALEM" with

LAWSON McCALL EACH SATURDAY 7:30 EVENING

Interviews and comments with members of the legislature and legislative authorities.

Hear McCall also at 7:00 A.M. MON. THRU FRI.



Other Daily Broadcasts on KEX 9:00—NEWS AT NINE 12:00—NOON NEWS 6:15—HOME EDITION 10:00—RICHFIELD REPORTER

Look to SAFEWAY for SAVINGS!

PREM Swift Brand A favorite for Lunches or Parties 12-oz. can 43 <sup>c</sup>	Dog Food Playfair brand Your pet will approve of this item 3 cans 29 <sup>c</sup>	Kitchen Craft FLOUR Ask about Big Contest! 25-lb. \$2.05	Royal Satin SHORTENING 1-lb. can 35 <sup>c</sup> 3-lb. can 99 <sup>c</sup>
---	---	--	--