

**CLASSIFIED WANT ADS**

TWO Cents a word per issue  
 NOTHING LESS THAN 25c  
 CASH MUST ACCOMPANY  
 ALL CLASSIFIED ADS  
 NO ADS TAKEN OVER PHONE

We Publish the  
**BEAVERTON ENTERPRISE**  
**TIGARD SENTINEL**  
**MULTNOMAH PRESS**  
**ALOHA NEWS**

Complete Eastern Washington County and Western Multnomah County Coverage.

We assume no financial responsibility for errors which may appear in advertisements published in these columns but in case where this paper is at fault will reprint that part of an advertisement in which the typographical mistake occurs.

**FOR SALE**

FOR SALE—Can Sealer. Phone Aloha 6637.

DISCING, Combine, Plowing, E. R. Rentico, R1, Bx 396, Sherwood, Or., Phone Tigard 2403. 23-26

FOR SALE—4 yr old Guernsey Cow, fresh this spring, and 2 yearling heifers, same stock. Excellent buy. Inquire of Geo. Heppner, P. O. Bx 16, Tigard, Ore. 23

ROYAL ANN & Lambert Cherries 6c per pound, If You Pick. 10c per pound when we pick them. Fred Leuthi, Walnut Ave., Tigard, EX 503. 23

FOR SALE—1 Postcard size Kodak, with leather case \$16. Phone Tigard 2190. 23

**MOVING-SELLING?**

We Pay cash for equities. Only 24 hours and title search required. If you want to sell—we can give you concentrated action backed by 20 years of successful service in the Portland area. PORT INVESTMENT Co., Established 1924. 310 Times Bldg., Portland, AT. 6459 23

FOR SALE—Old growth 16 in. wood, two cord lots. Write for my price before you buy. L. E. Soule, R1, Banks, Ore. 22-23

FOR SALE—Wood Green 16 in. slab \$9 per cord in 2 1/2 cord loads. Ruben Johnson, Newberg Star Route. Phone 193J. 15tf

BROOD SOWS and Weaner Pigs for Sale the year around. S. A. Gotter, Scholls. 12tf

FOR SALE—Smoothtop Gas Range and small wood heating stove. Enterprise Bldg., Short St. at Tualatin Hwy., Beaverton, Frank Magathian. tf

FOR SALE—4 ft green slab. Aloha district \$6 per cord. Block & Edging \$7 per cord. Beaverton-Tigard-Garden Home district 4 ft. green slab \$7 per cord. Block & Edgings \$8 per cord. H. F. Elford, Forest Grove. Phone 56. tf

Drive carefully—you want to get home safely—Others would like to do the same.

**Riverview Cemetery**

WEST END  
 SELLWOOD BRIDGE

CREMATORIUM  
 MAUSOLEUM  
 CEMETERY

Complete Funeral Service in New Cathedral Chapel at No Extra cost Riverview is a co-operative association with assets of over \$800,000



**J. P. Finley & Son**

MORTICIAN

SW FOURTH AT MONTGOMERY  
 ATwater 2181

**WANTED**

**BRICKYARD  
 FACTORY WORKERS**

Essential Industry

EXPERIENCE  
 NOT NECESSARY

Steady Work with Overtime

APPLY AT

**SYLVAN PLANT  
 COLUMBIA BRICK WORKS**

1320 S. E. Water Ave., Portland

FOR SALE—Lambert, Bing, Royal Ann Cherries, You Pick. 1 1/2 mile S of Beaverton. Phone 2719. 22

**WANTED**

WANTED—Lady kitchen helper. 5 to 9 p. m. daily. Near Multnomah. Phone ATwater 0761. 22-23

WANTED—Man for Janitor work School Dist. 45, Beaverton. Apply Beaverton High School Office mornings, except Saturday. 21-23

**RABBITS WANTED**

BEST PRICE for Rabbit tryers, D. P. MacDonald, R2, Bx 218, Beaverton. Phone Beaverton 2260. We pick up. tf

WANTED—Live Rabbits, to buy now. Top prices paid. Rabbit Meat Co., 8917 SE Stark St., Portland. Phone SUnset 1722. Open week days only until 7:30 p. m. tf

**MISCELLANEOUS**

ELECTRICAL APPLIANCES—repaired. Leave at Zumwalt Hardware Store, Beaverton. 18-26

HIDES & WOOL, CASCARA—A specialty. LEE BROS., 25 SW Clay Portland. AT. 5334. tf

FOR TOW CAR call VERMILYE MOTOR CO., Phone Tigard 3381 tf

CUSTOM TRACTOR WORK—Let us plow your garden. Howard Wm. Smith, Johnson Rd. & Division sts., Phone Beaverton 2462 4tf

Home Refrigeration and washing machine services. Call K. B. Twombly CH. 2267. 8tf

Dead stock picked up free of charge anywhere. Call collect. UN. 1221; night call DENLEY RENDERING CO., Portland. tf

**PAINTS**

**Imlay's Fresh  
 Mixed Feeds  
 FISHER THORSEN PAINTS**  
 For quality, fair price and service

**J. B. Imlay & Sons**  
 REEDVILLE ALOHA, ORE.

**Bolivia Noted for Highest Capital; Steamer Service**

About twice as large as Texas, Bolivia has no seaport, must use rail connection with Peruvian and Chilean ports for Pacific outlet, or turn to the headwaters of the Amazon River for Atlantic contact.

Bolivia's land-locked Andean plateau, cradled two miles high between snow-capped ranges two miles higher, stirred the world's interest with its "world's highest capital, La Paz," and its "world's highest steamer service" on Lake Titicaca.

Low tropical plains to the east of the mountains make up about seven-tenths of the national domain. On the south they merge into the Gran Chaco region, scene of a recent boundary war with Paraguay.

More than half of Bolivia's 3,226,000 people are Indians, successors to one of the New World's oldest cultures. Influence of Spanish occupation endures in names and institutions. Sucre, the nominal capital, has a university founded in 1624. La Paz, biggest city, with 200,000 people, is the actual seat of government.

**Damping-off**

Damping-off causes much damage to vegetables, both by reducing the percentage of germination and by rotting off the stems of seedlings at the surface of the ground. It is most serious on plants started under glass, but often injures crops started in the open. For plants started under glass, the soil may be treated with formaldehyde dust, or, for small lots, heated in the oven to kill the disease organisms. However, the simplest control measure for plantings made either in the open or under glass is seed treatment with a suitable material. The home gardener will find it to his advantage to buy seed already treated, but if this is not available, he may treat his own seed.

The \$75 price of a \$100 "E" bond will buy approximately two submachine guns (Tommy guns) or one rubber life raft.

**CAR WASHERS  
 MECHANICS**

Mechanics work 48 hrs. per week, 40 hours straight; 8 hours time and a half. Good working conditions. Permanent employment.

**OREGON**

**MOTOR STAGES**

506 SW Mill BE. 3021  
 PORTLAND

**South American Countries  
 Preserve Colonial Coin**

Old Spanish colonial days are still evoked in Mexico, Cuba, Chile, Colombia, Uruguay, Argentina and the Dominican Republic by the gold or silver peso which is the basic monetary unit of these countries. Peso, meaning "weight" in Spanish, denoted a one-ounce silver coin often used instead of standard weights in weighing. The Spaniards applied the term to money used in the New World during the colonial era and it was retained by some American nations after they had won their independence.

Until a short time ago Paraguay had a peso worth about a third of a cent in United States money, but a recent decree replaced it with the guarani, named after the original Indian inhabitants of that country. Haiti's gourde is another coin recalling early colonial days. It derives from the French word meaning "fat" or "thick" and was used affectionately to denote large coins used by the colonists. Some authorities, however, contend that the word derives from the home-grown calabashes, or gourdes, once widely used for barter.

Like Paraguay, Peru commemorates the ancient Indian inhabitants of the country with the sol, or "sun." The sun was worshipped as a god by the Incas inhabiting Peru when the Spaniards came, and figures prominently in the history and traditions of the nation's pre-colonial and colonial days.

**Metal Stencils Used**

**Exclusively for Mail**

The printing and publishing industry uses today millions of metal stencils to address mail. These are made of zinc alloy and are punched on embossing machines.

In use the printing is done by machine from the raised or embossed surface. In this surface the letters are in reverse. On the non-printing side the letters are depressed below the surface of the rest of the metal.

It is this surface, the intaglio face, with which we are concerned. Here the printing is not in reverse, but may be read in the manner of any ordinary print. In all stencil reading and filing operations, in which occupation thousands of operators—many of them women—are employed in the industry, these metal stencils, before and after use, must be checked with copy for correctness of name, address and code marks, and then be sorted and filed in drawers in correct relation to the stencil lying before and behind.

It is an exacting occupation requiring a high degree of accuracy of binocular function and accurate depth perception, together with rapid ocular and manual cooperation and equilibrium.

**Early Bombs**

The bombing of Italian cities takes aerial warfare back to the region where its weapons were invented and forgotten 450 years ago. Experiments with bombs and airplanes were carried out in Italy in the decades of Columbus' voyages to America.

The 15th century inventor of aerial weapons was Leonardo da Vinci, an Italian now known as one of the world's greatest religious artists. For the same warlord who commissioned him to paint "The Last Supper," Da Vinci invented a fire-bomb; a copper core bristling with explosive rockets, embedded in burning pitch and other ingredients which released poison gas. While he was painting the quizzical smile of "Mona Lisa," he spent his spare time fashioning starched taffeta, willow rods, ox-hide thongs, and steel springs into models for a "flying machine."

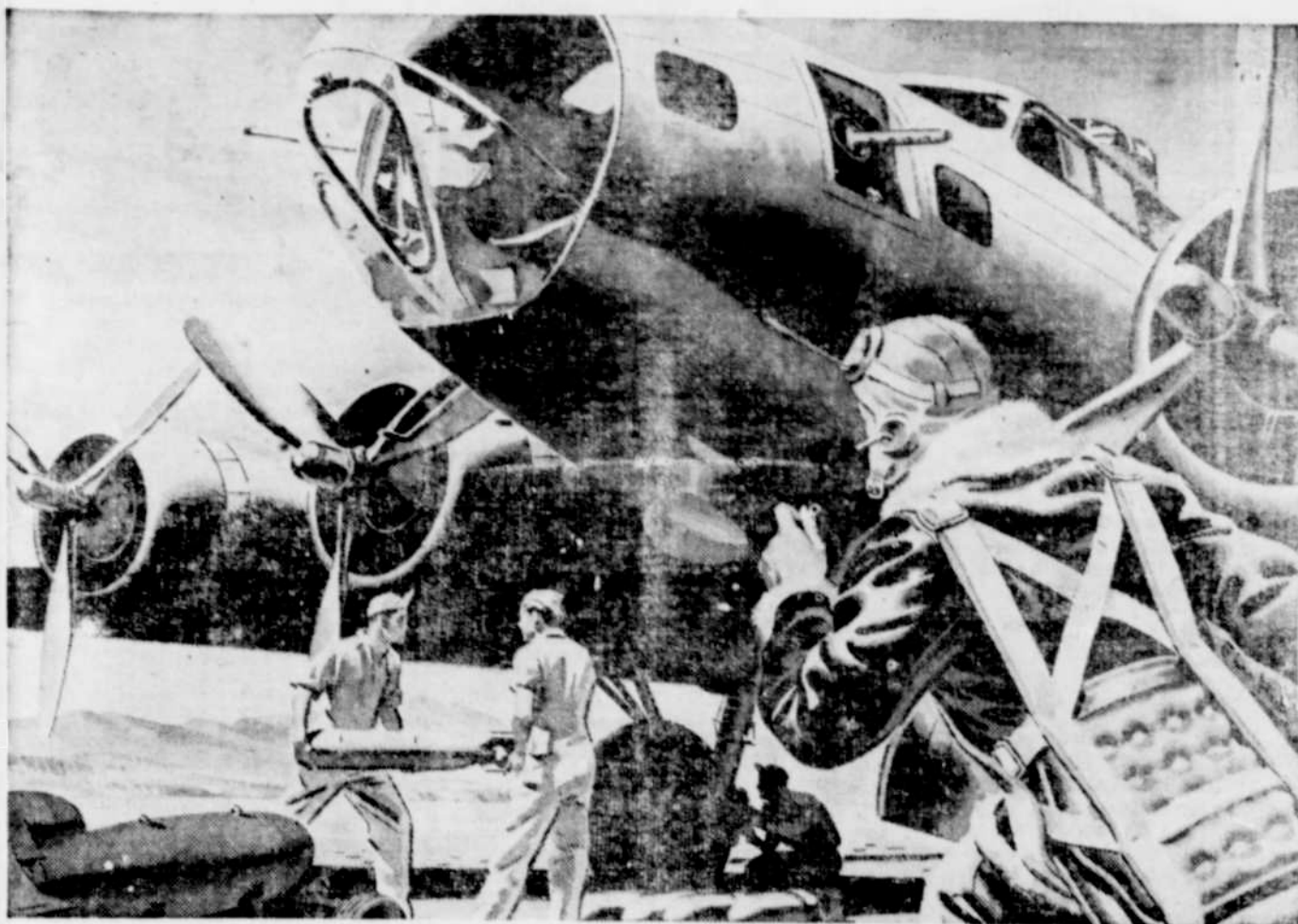
**Marshall Islands**

The Marshall Islands are largely made up of two chains of atolls, extending northwestward from the Gilbert group in more or less parallel lines. Mill and its neighboring islet, Narik, form the southern extremity of the eastern, or Radak, chain. The name Radak means "sunrise." Given because of its geographic position, the word is also symbolic of the indicated promise of American action in this part of the world.

One of the 32 Marshall atolls, Mill comprises a roughly oblong-shaped cluster of islets and reefs surrounding a large lagoon. The lagoon is about 23 miles long and nearly 12 miles wide at its widest point. Navigable entrances into it are practically all from the north. The best channel, on the northwest, is about 250 yards across and deep enough to accommodate the largest ships.

**Organ Pipe Cactus**

Ventana cave, the discovery of which revealed that man had lived in Arizona 7,000 years ago, has a companion wonder of sightseeing interest in Organ Pipe National monument. The monument, known as Uncle Sam's miracle garden, to preserve the rare pipe organ cactus, is the dividing line between the 5 1/2 square miles of arboreal growth and the Papago Indian reservation, which contains the cave. The organ pipe cactus resembles the pipes of a giant pipe organ, with the lone whisker cactus acting as lone sentry of the desert. In a gorgeous spectrum of color, the blossoming of organ pipe cactus is one of nature's most entrancing scenes enhanced in coloration by night blooming cereus.



**HE'S OFF ON  
 HIS FIFTY-FIFTH MISSION**

There he goes again—out to pour more destruction on the Axis—once more to face the death of enemy fighters and flak!

He won't hesitate to go out on his fifty-sixth or his hundred and fifty-sixth mission. He knows he might not come back, but he keeps on going—giving more and more until the Hitler and

Tojo crews are ready to "call it quits."

This is only your fifth mission—and a mission which is mighty easy in comparison with the ones he makes every week.

Stay in the fight by welcoming the Victory Volunteers—at least double your Bond purchases and then keep on. Your buying means "bombs away" for the Axis!



**Back the Attack! - BUY MORE THAN BEFORE**

**The "Plimsoll" Mark**

Back in the 19th century, shipping in British bottoms was not only highly competitive but also profitable. Competition, however, encouraged the ship owners to overload their ships so seriously that ship losses were extremely high—and as the losses increased, it became increasingly difficult to secure seamen.

When the situation reached a critical stage, it was evident that the only cure was legislation. Samuel Plimsoll proposed to Parliament a merchant marine act in 1876 which limited the draft to which ships could be loaded. This maximum water line was indicated by a prescribed symbol which came to be known as the "Plimsoll" mark.

The mark is located by measuring down a prescribed distance from a point on the main deckline and indicates the amount of freeboard required for safety.

WAR BONDS are the safest investment in the wide world.

**Says Eggs or Chicks**

**Best Blood for Flocks**

Use hatching eggs or baby chicks to introduce new blood into a breeding flock with least danger of introducing disease, says Prof. J. H. Bruckner of the New York State College of Agriculture.

Adult birds are the most dangerous to bring in, as they may appear healthy, yet carry colds, cholera, and other diseases that cause much damage on poultry farms. If birds and not eggs are brought into a breeding establishment, a few home farm birds should be put with the new arrivals in an isolated pen for a few weeks, and watched to see if all stay healthy.

Half-grown range stock is less dangerous than adult birds, and baby chicks are still better. The breeder should make sure he buys from a farm with disease-free birds, pullorum free if his own birds are tested.

CLASSIFIED ADS. Mail or leave at our office.

**Feed Fruit Trees**

Early spring is an excellent time to feed fruit trees. Use a complete balanced plant food.

Fruit trees in the lawn may be fed in the same way as ornamental foliage trees—that is, by means of a series of holes about 2 inches in diameter, 12 to 18 inches deep, placed in a zigzag fashion slightly inside and outside the branch spread. Fill holes with a mixture of half plant food and half soil. Then water. In figuring the requirements of a tree, allow three pounds of plant food to each inch of diameter (or one pound for each inch of circumference) of the trunk, measuring four feet above the ground.

Where trees are surrounded by cultivated soil, surface application of plant food is satisfactory. Some gardeners broadcast the plant food under the entire branch spread.

An honest man will accept neither money nor praise that is not his due.

The noblest question in the world is, What good may I do in it?

**THE OLD JUDGE SAYS...**



"The men overseas don't mince any words about the way they want to find this country when they come marching home... do they, Judge?"

"They certainly don't, Herb...and they shouldn't. They're doing a masterful job fighting over there to protect our rights and they have good license to expect us to protect theirs back here at home. One thing they're mighty clear on is their stand on prohibition."

"Their position on that subject was stated very emphatically in a poll taken recently

among American service men in England by the British Institute of Public Opinion. When hundreds of men were asked point blank how they would vote on prohibition, 65% of them stated, in unmistakable terms, that they would vote against it. There's no doubt about it, Herb...the men overseas don't want any action taken on that subject while they're away."

"And they're 100% right, Judge, because I know how I felt when I came home after the last war—only to learn that we had been over there fighting for so impractical a thing as Prohibition."

This advertisement sponsored by Conference of Alcoholic Beverage Industries, Inc.