

**CLASSIFIED WANT ADS**

TWO Cents a word per issue  
NOTHING LESS THAN 25c  
CASH MUST ACCOMPANY  
ALL CLASSIFIED ADS  
NO ADS TAKEN OVER PHONE

We Publish the  
**BEAVERTON ENTERPRISE**  
**TIGARD SENTINEL**  
**MULTNOMAH PRESS**  
**ALOHA NEWS**

Complete Eastern Washington County  
and Western Multnomah County  
Coverage.

We assume no financial responsibility  
for errors which may appear in  
advertisements published in these  
columns but in case where this paper  
is at fault will reprint that part of  
an advertisement in which the typographical  
mistake occurs.

**FOR SALE**

FOR SALE—Can Sealer. Phone  
Aloha 6637. 23

DISCING, Combine, Flowing, E. R.  
Renticco, R1, Bx 396, Sherwood,  
Or., Phone Tigard 2403. 23-26

FOR SALE—4 yr old Guernsey  
Cow, fresh this spring, and 2 year-  
ling heifers, same stock. Excellent  
buy. Inquire of Geo. Heppner, P.  
O. Bx 16, Tigard, Ore. 23

ROYAL ANN & Lambert Cherries  
6c per pound, If You Pick, 10c per  
pound when we pick them. Fred  
Leuthi, Walnut Ave., Tigard, Bx  
503. 23

FOR SALE—1 Postcard size Kodak,  
with leather case \$16. Phone  
Tigard 2190. 23

**MOVING-SELLING?**  
We Pay cash for equities. Only 24  
hours and title search required. If  
you want to sell—we can give you  
concentrated action backed by 20  
years of successful service in the  
Portland area. PORT INVEST-  
MENT Co., Established 1924. 310  
Times Bldg., Portland, AT. 6459 23

FOR SALE—Old growth 16 in.  
wood, two cord lots. Write for  
my price before you buy. L. E.  
Soule, R1, Banks, Ore. 22-23

FOR SALE—Wood Green 16 in.  
slab \$9 per cord in 2 1/2 cord loads.  
Ruben Johnson, Newberg Star  
Route. Phone 193J. 15tr

**BROOD SOWS** and Weaner Pigs  
for Sale the year around, S. A.  
Gotter, Scholls. 12tr

FOR SALE—Smoothtop Gas Range  
and small wood heating stove. En-  
terprise Bldg., Short St. at Tualatin  
Hiway, Beaverton, Frank Ma-  
gathan. 15tr

FOR SALE—4 ft green slab. Aloha  
district \$6 per cord. Block & Ed-  
ging \$7 per cord. Beaverton-Tigard-  
Garden Home district 4 ft.  
green slab \$7 per cord. Block &  
Edging \$8 per cord. H. F. Elford,  
Forest Grove. Phone 56. 15tr

Drive carefully—you want to get  
home safely—Others would like to do  
the same.

**Riverview Cemetery**  
WEST END  
SELLWOOD BRIDGE  
**CREMATORIUM**  
**MAUSOLEUM**  
**CEMETERY**  
Complete Funeral Service in New  
Cathedral Chapel at No Extra cost  
Riverview is a co-operative associa-  
tion with assets of over \$800,000



**J. P. Finley & Son**  
MORTICIAN  
SW FOURTH AT MONTGOMERY  
ATwater 2181

**WANTED**  
**BRICKYARD**  
**FACTORY WORKERS**  
Essential Industry  
**EXPERIENCE**  
**NOT NECESSARY**  
Steady Work with Overtime  
APPLY AT  
**SYLVAN PLANT**  
**COLUMBIA BRICK WORKS**  
1320 S. E. Water Ave., Portland

FOR SALE—Lambert, Bing, Royal  
Ann Cherries, You Pick. 1 1/2 mile  
S of Beaverton. Phone 2719. 22

**WANTED**  
WANTED—Lady kitchen helper.  
5 to 9 p. m. daily. Near Multnomah.  
Phone ATwater 0761. 22-23

WANTED—Man for Janitor work  
School Dist. 48, Beaverton. Apply  
Beaverton High School Office  
mornings, except Saturday. 21-23

**RABBITS WANTED**  
BEST PRICE for Rabbit tryers, D.  
P. MacDonald, R2, Bx 218, Beaver-  
ton. Phone Beaverton 2260. We  
pick up. 15tr

WANTED—Live Rabbits, to buy  
now. Top prices paid. Rabbit Meat  
Co., 8917 SE Stark St., Portland.  
Phone SUNset 1722. Open week  
days only until 7:30 p. m. 15tr

**MISCELLANEOUS**  
ELECTRICAL APPLIANCES—re-  
paired. Leave at Zumwalt Hard-  
ware Store, Beaverton. 18-26

**HIDES & WOOL, CASCARA—A**  
specialty. LEE BROS., 25 SW  
Clay Portland. AT. 5334. 15tr

FOR TOW CAR call VERMILYE  
MOTOR CO., Phone Tigard 3381 15tr

**CUSTOM TRACTOR WORK—**Let  
us plow your garden. Howard  
Wm. Smith, Johnson Rd. & Divi-  
sion sts., Phone Beaverton 2462 15tr

Home Refrigeration and washing  
machine services. Call K. B.  
Twombly CH. 2267. 8tr

Dead stock picked up free of  
charge anywhere. Call  
collect. UN. 1221; night call  
DENLEY RENDERING CO.,  
Portland. 15tr

**PAINTS**  
**Imlay's Fresh**  
**Mixed Feeds**  
**FISHER THORSEN PAINTS**  
For quality, fair price and  
service  
**J. B. Imlay & Sons**  
REEDVILLE ALOHA, ORE.

**Bolivia Noted for Highest  
Capital; Steamer Service**

About twice as large as Texas,  
Bolivia has no seaport, must use  
rail connection with Peruvian and  
Chilean ports for Pacific outlet, or  
turn to the headwaters of the Amazon  
River for Atlantic contact.

Bolivia's land-locked Andean pla-  
teau, cradled two miles high be-  
tween snow-capped ranges two  
miles higher, stirred the world's  
interest with its "world's highest  
capital, La Paz," and its "world's  
highest steamer service" on Lake  
Titicaca.

Low tropical plains to the east  
of the mountains make up about  
seven-tenths of the national domain.  
On the south they merge into the  
Gran Chaco region, scene of a re-  
cent boundary war with Paraguay.

More than half of Bolivia's 3,226,  
000 people are Indians, successors  
to one of the New World's oldest  
cultures. Influence of Spanish occu-  
pation endures in names and in-  
stitutions. Sucre, the nominal cap-  
ital, has a university founded in  
1624. La Paz, biggest city, with  
200,000 people, is the actual seat  
of government.

**Damping-off**  
Damping-off causes much damage  
to vegetables, both by reducing the  
percentage of germination and by  
rotting off the stems of seedlings  
at the surface of the ground. It is  
most serious on plants started under  
glass, but often injures crops started  
in the open. For plants started  
under glass, the soil may be treated  
with formaldehyde dust, or, for  
small lots, heated in the oven to kill  
the disease organisms. However, the  
simplest control measure for plant-  
ings made either in the open or un-  
der glass is seed treatment with a  
suitable material. The home gardener  
will find it to his advantage to  
buy seed already treated, but if this  
is not available, he may treat his  
own seed.

The \$75 price of a \$100 "E" bond  
will buy approximately two subma-  
chine guns (Tommy guns) or one  
rubber life raft.

**CAR WASHERS**  
**MECHANICS**  
Mechanics work 48 hrs. per week  
40 hours straight; 8 hours time  
and a half. Good working condi-  
tions. Permanent employment.  
**OREGON**  
**MOTOR STAGES**  
506 SW Mill BE. 3021  
PORTLAND

**South American Countries  
Preserve Colonial Coin**

Old Spanish colonial days are still  
evoked in Mexico, Cuba, Chile, Co-  
lombia, Uruguay, Argentina and the  
Dominican Republic by the gold or  
silver peso which is the basic mon-  
etary unit of these countries. Peso,  
meaning "weight" in Spanish, de-  
noted a one-ounce silver coin often  
used instead of standard weights in  
weighing. The Spaniards applied the  
term to money used in the New  
World during the colonial era and it  
was retained by some American  
nations after they had won their  
independence.

Until a short time ago Paraguay  
had a peso worth about a third of a  
cent in United States money, but a  
recent decree replaced it with the  
guarani, named after the original  
Indian inhabitants of that country.  
Haiti's gourde is another coin re-  
calling early colonial days. It de-  
rives from the French word mean-  
ing "fat" or "thick" and was used  
affectionately to denote large coins  
used by the colonists. Some authori-  
ties, however, contend that the word  
derives from the home-grown cala-  
bashes, or gourdes, once widely  
used for barter.

Like Paraguay, Peru commemo-  
rates the ancient Indian inhabitants  
of the country with the sol, or  
"sun." The sun was worshipped as a  
god by the Incas inhabiting Peru  
when the Spaniards came, and fig-  
ures prominently in the history and  
traditions of the nation's pre-colonial  
and colonial days.

**Metal Stencils Used  
Exclusively for Mail**

The printing and publishing indus-  
try uses today millions of metal  
stencils to address mail. These are  
made of zinc alloy and are punched  
on embossing machines.

In use the printing is done by  
machine from the raised or embos-  
sured surface. In this surface the  
letters are in reverse. On the non-  
printing side the letters are de-  
pressed below the surface of the  
rest of the metal.

It is this surface, the intaglio  
face, with which we are concerned.  
Here the printing is not in reverse,  
but may be read in the manner of  
any ordinary print. In all stencil  
reading and filing operations, in  
which occupation thousands of op-  
erators—many of them women—are  
employed in the industry, these  
metal stencils, before and after use,  
must be checked with copy for cor-  
rectness of name, address and code  
marks, and then be sorted and filed  
in drawers in correct relation to the  
stencil lying before and behind.

It is an exacting occupation re-  
quiring a high degree of accuracy  
of binocular function and accurate  
depth perception, together with  
rapid ocular and manual cooper-  
ation and equilibrium.

**Early Bombs**

The bombing of Italian cities  
takes aerial warfare back to the  
region where its weapons were in-  
vented and forgotten 450 years ago.  
Experiments with bombs and air-  
planes were carried out in Italy  
in the decades of Columbus' voy-  
ages to America.

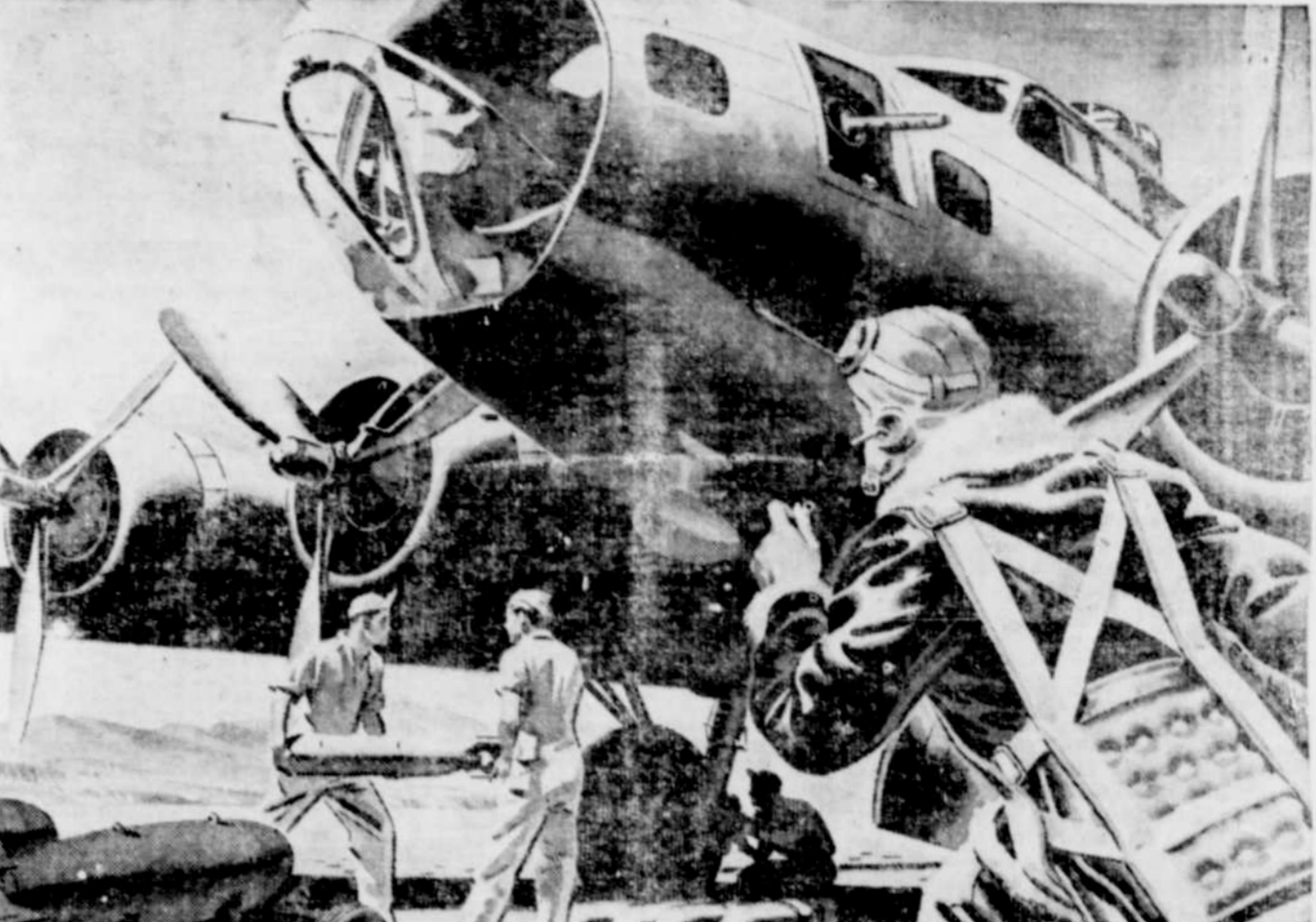
The 15th century inventor of  
aerial weapons was Leonardo da  
Vinci, an Italian now known as  
one of the world's greatest reli-  
gious artists. For the same warlord  
who commissioned him to paint  
"The Last Supper," Da Vinci in-  
vented a fire-bomb; a copper core  
bristling with explosive rockets, em-  
bedded in burning pitch and other  
ingredients which released poison  
gas. While he was painting the quiz-  
ical smile of "Mona Lisa," he  
spent his spare time fashioning  
starched taffeta, willow rods, ox-  
hide thongs, and steel springs into  
models for a "flying machine."

**Marshall Islands**

The Marshall Islands are largely  
made up of two chains of atolls, ex-  
tending northwestward from the Gil-  
bert group in more or less parallel  
lines. Mili and its neighboring islet,  
Narik, form the southern extremity  
of the eastern, or Radak, chain.  
The name Radak means "sunrise."  
Given because of its geographic  
position, the word is also symbolic  
of the indicated promise of Ameri-  
can action in this part of the world.  
One of the 32 Marshall atolls, Mili  
comprises a roughly oblong-shaped  
cluster of islets and reefs surround-  
ing a large lagoon. The lagoon is  
about 23 miles long and nearly 12  
miles wide at its widest point. Navi-  
gable entrances into it are practi-  
cally all from the north. The best  
channel, on the northwest, is about  
250 yards across and deep enough  
to accommodate the largest ships.

**Organ Pipe Cactus**

Ventana cave, the discovery of  
which revealed that man had lived  
in Arizona 7,000 years ago, has a  
companion wonder of sightseeing  
interest in Organ Pipe National  
monument. The monument, known  
as Uncle Sam's miracle garden, to  
preserve the rare pipe organ cactus,  
is the dividing line between the 5 1/2  
square miles of arboreal growth and  
the Papago Indian reservation,  
which contains the cave. The organ  
pipe cactus resembles the pipes of  
a giant pipe organ, with the lone  
whisker cactus acting as giant  
sentry of the desert. In a gorgeous  
spectrum of color, the blossoming  
of organ pipe cactus is one of na-  
ture's most entrancing scenes en-  
livened in coloration by night bloom-  
ing cereus.



**HE'S OFF ON  
HIS FIFTY-FIFTH MISSION**

There he goes again—out to pour more  
destruction on the Axis—once more to  
face the death of enemy fighters and flak!  
He won't hesitate to go out on his fifty-  
sixth or his hundred and fifty-  
sixth mission. He knows he  
might not come back, but he  
keeps on going—giving more  
and more until the Hitler and

Tojo crews are ready to "call it quits."  
This is only your fifth mission—and a  
mission which is mighty easy in compari-  
son with the ones he makes every week.  
Stay in the fight by welcoming  
the Victory Volunteers—at least  
double your Bond purchases and  
then keep on. Your buying means  
"bombs away" for the Axis!



**Back the Attack!—BUY MORE THAN BEFORE**

**The "Plimsoll" Mark**

Back in the 19th century, shipping  
in British bottoms was not only  
highly competitive but also profit-  
able. Competition, however, encour-  
aged the ship owners to overload  
their ships so seriously that ship  
losses were extremely high—and as  
the losses increased, it became in-  
creasingly difficult to secure sea-  
men.

When the situation reached a criti-  
cal stage, it was evident that the  
only cure was legislation. Samuel  
Plimsoll proposed to Parliament a  
merchant marine act in 1876 which  
limited the draft to which ships  
could be loaded. This maximum  
water line was indicated by a pre-  
scribed symbol which came to be  
known as the "Plimsoll" mark.

The mark is located by measuring  
down a prescribed distance from a  
point on the main deckline and in-  
dicates the amount of freeboard  
required for safety.

WAR BONDS are the safest invest-  
ment in the wide world.

**Says Eggs or Chicks  
Best Blood for Flocks**

Use hatching eggs or baby chicks  
to introduce new blood into a breed-  
ing flock with least danger of intro-  
ducing disease, says Prof. J. H.  
Bruckner of the New York State  
College of Agriculture.

Adult birds are the most danger-  
ous to bring in, as they may appear  
healthy, yet carry colds, cholera,  
and other diseases that cause much  
damage on poultry farms. If birds  
and not eggs are brought into a  
breeding establishment, a few home  
farm birds should be put with the  
new arrivals in an isolated pen for a  
few weeks, and watched to see if  
all stay healthy.

Half-grown range stock is less  
dangerous than adult birds, and  
baby chicks are still better. The  
breeder should make sure he buys  
from a farm with disease-free birds,  
pullorum free if his own birds are  
tested.

CLASSIFIED ADS. Mail or leave  
at our office.

**Feed Fruit Trees**

Early spring is an excellent time  
to feed fruit trees. Use a complete  
balanced plant food.

Fruit trees in the lawn may be  
fed in the same way as ornamental  
foliage trees—that is, by means of  
a series of holes about 2 inches in  
diameter, 12 to 18 inches deep,  
placed in a zigzag fashion slightly  
inside and outside the branch  
spread. Fill holes with a mixture of  
half plant food and half soil. Then  
water. In figuring the requirements  
of a tree, allow three pounds of plant  
food to each inch of diameter (or  
one pound for each inch of circum-  
ference) of the trunk, measuring  
four feet above the ground.

Where trees are surrounded by  
cultivated soil, surface application  
of plant food is satisfactory. Some  
gardeners broadcast the plant food  
under the entire branch spread.

An honest man will accept neither  
money nor praise that is not his due.

The noblest question in the world  
is, What good may I do in it?

**THE OLD JUDGE SAYS...**



"The men overseas don't mince any words  
about the way they want to find this  
country when they come marching home...  
do they, Judge?"  
"They certainly don't, Herb...and they  
shouldn't. They're doing a masterful job  
fighting over there to protect our rights and  
they have good license to expect us to pro-  
tect theirs back here at home. One thing  
they're mighty clear on is their stand on  
prohibition."  
"Their position on that subject was stated  
very emphatically in a poll taken recently

among American service men in England by  
the British Institute of Public Opinion.  
When hundreds of men were asked point  
blank how they would vote on prohibition,  
25% of them stated, in unmistakable terms,  
that they would vote against it. There's no  
doubt about it, Herb...the men overseas  
don't want any action taken on that subject  
while they're away."  
"And they're 100% right, Judge, because  
I know how I felt when I came home after  
the last war—only to learn that we had  
been over there fighting for so impractical  
a thing as Prohibition."

This advertisement sponsored by Conference of Alcoholic Beverage Industries, Inc.