

Classified Rates

2 Cents a word per issue. Minimum 25c CASH with copy

We Publish the Beaverton Enterprise Multnomah Press Tugard Sentinel Aloha News

Complete Eastern Washington County and Western Multnomah County Coverage.

We assume no financial responsibility for errors which may appear in advertisements published in these columns but in case where this paper is at fault will reprint that part of an advertisement in which the typographical mistake occurs.

Cleaning and Pressing

THE BEAVERTON CLEANERS, on Broadway at Beaverton, Cleaning, Pressing, Alterations; no extra charge for call and delivery Phone 6304. Laundry Agency, Portland rates.

Concrete Products

SANITARY CONCRETE SEPTIC TANKS - Special introductory prices, Sewer, Irrigation, Drain, Pipe, Blocks, Well Curb. PORTLAND CONCRETE PIPE PRODUCTS CO., Phone AT. 4921, 5819 Macadam Ave., Portland.

Plowing, Discing, Harrowing

LET ME DO YOUR PLOWING, discing, harrowing. I have new Massey-Harris tractor and equipment, purchased from Grange Wholesale 22 horse Drawbar, 38 horse pulley. Satisfactory work guaranteed. Reasonable charge. Can handle work in Clackamas, Washington or Multnomah Counties. Write or phone R. E. POPPINO, Rt. 11 Box 517, Portland, Phone SUnset 1709.

Moving - Transfer

Local or Long Distance MOVING 15 years experience Fully Insured-A-1 Equipment Satisfaction guaranteed MAC'S TRANSFER EDDIE BOUSCHOR, Prop. AT. 4928 Multnomah, Ore.

Fixit Service

ERICSON HARDWARE & REPAIR SHOP GENERAL REPAIRING We Don't Mend Broken Eggs - "Eeny-thing Else Bring'er In 8313 SE 13th Ave, SE. 4640 Portland, Oregon

General Fixit

Veterans Fixit Shop Repairs Most Everything and all work guaranteed. Screen doors and windows made to order. See us for reconditioned washing Machines and good sharp lawn Mowers at \$2.50 and up 4214 SE 39th Ave. SE. 6335

Roofing

Most Amazing Discovery on Earth for all Kinds of Old LEAKY ROOFS All leaks disappear instantly Write or Call for Free Estimates Rubber Bond Roofing Co. 34 SW Front St. Portland BE. 6181

Miscellaneous

STRAYED - Near Reedville, a small bay mare wearing halter. Reward for information, D. A. Baughman, Beaverton, Hillsboro 3294.

Automatic Oil Burners \$225

Completely Installed P. H. A. TERMS Oil Burning Hot Water Heaters Oil Burning Furnaces PETE STROM 33 NE Bryant MU. 4190

DEAD worthless horses, Cattle picked up at any time. UN. 6651 Portland

HIDES and WOOL CASCARA - A specialty. LEE BROS., 416 SW Front Ave., ATwater 5334.

MONTANA ASSAY OFFICE 610 S. W. 2nd ave. AT. 2726. Chemists, Assayers and Metallurgists. Highest prices paid for OLD GOLD and SILVER

Convalescent Home

LYMAN HOME 405 N. E. 78th Avenue

A Home for Elderly Women WARM ROOMS - GOOD MEALS SPECIAL DIETS Call Mrs. Paulsen, TA. 9410

Poultry For Sale

RHODE ISLAND REDS and Barred Rocks at the Richardson hatchery every Tuesday. Pulletts for sale, Tualatin, Oregon.

Paints - Varnishes

Details Arranged in your own home. Only responsible painters and decorators. Call Mr. Read today. AT. 1935 COPELAND LUMBER CO MULTNOMAH

Used Automobiles

"BLUE SEAL"

Reconditioned - Guaranteed Commercial Cars and Trucks

Table listing vehicle models and prices: 37 STUDERBAKER PICKUP \$545, 34 DODGE PICKUP 325, CHEVROLET PANEL 445, DODGE 1 1/2-TON PANEL 525, DODGE PANEL 475, DODGE SEDAN DELIV. 495, CHEVROLET PANEL 395, FORD SEDAN DELIVERY 395, DODGE PANEL 325, CHEVROLET PANEL 475

Table listing vehicle models and prices: 37 DODGE 7/8-TON H. D. EA. TON 2-SPEED AXLE 825, CHEV. 1 1/2-T. LONG W B 495, DODGE 2-TON 505, CHEV 1 1/2-T. LNG. WB 395, FORD V-8 SPECIAL 12-FT ENC BODY 385, CHEV. TRUCK, FLAT BED 325, WHITE 2-T (4s is) 175, REGO 1 1/2-TON 178, MODEL A FORD 1 1/2-TON WITH GARAGE BODY 175, FORD 1 1/2-TON, LONG W B 145, CHEV. LWB, Wood Rack 145, CHEV. 1 1/2-T. LWB (as is) 125, FORD 1 1/2-T. LWB (as is) 95

W. W. Shipley Co.

DODGE-PLYMOUTH DIST. E. 6th and Couch BE. 6519

Used Trucks of Value

Wentworth & Irwin, Inc.

Table listing truck models and prices: G. M. C. 2-ton, excellent condition Almost new; 32x6 10-ply tires. A real bargain. \$450, INTERNATIONAL pickup, A-1 450, FORD pickup, good condition, 1936 350, CHEVROLET 1 1/2-ton, 11-ft van body, 1935 375, CHEVROLET 1 1/2-ton pickup, Bargain 50, FORD 1 1/2-ton Model B, 8-ft van body 1932 250, FORD 1 1/2-ton Model A, 1 1/2-yd dump truck, 1931 175

Bargains in Used School Busses, Logging Trailers, Semi-Trailers

Real Estate

5 or 6 room home near Barbur Blvd., West Portland or Multnomah Have City 6 room, clear, to exchange 5824 NE Union TR. 0701

For Sale

WOOD SAWING - First class work will go anywhere. Phone BR. 6750, John Schoenbecher, Maplewood, Oregon.

FRYERS FOR SALE - Very reasonable. BR 1788 at 5850 SW Vermont st., Live or dressed.

WOOD - Best old growth Fir Wood 4-ft. \$5; 12-16 inch \$5.75. Beaverton 7004.

U. G. FRT Service Station, intersection of Capitol Highway and Garden Home road near Vladuct, in Multnomah. Standard products, expert greasing jobs, real efficient service.

FOR SALE or TRADE - for town property, 1 acre, good 4-room house, & out buildings, fruit trees, 300 berries, light, water, gas, mail, 300 feet from highway, 1/2 mile west of Reedville, second house north of railroad crossing, E. J. Fageler, Beaverton, Route 2

Schools

MOLER BARBER COLLEGE - This International system is the scientific way; some pay; 3 teachers. Write or call 227 S. W. 3rd Ave. Portland.

Reader

PSYCHOLOGIST by Appointment Only MAUDE SNIDER SEIlwood 3810 Portland

Swedish Massage

Swedish massage for health and reducing. Ladies only Resident calls made. 3927 NE 12th Ave. Garfield 9770. Portland.

Bloat Muzzle

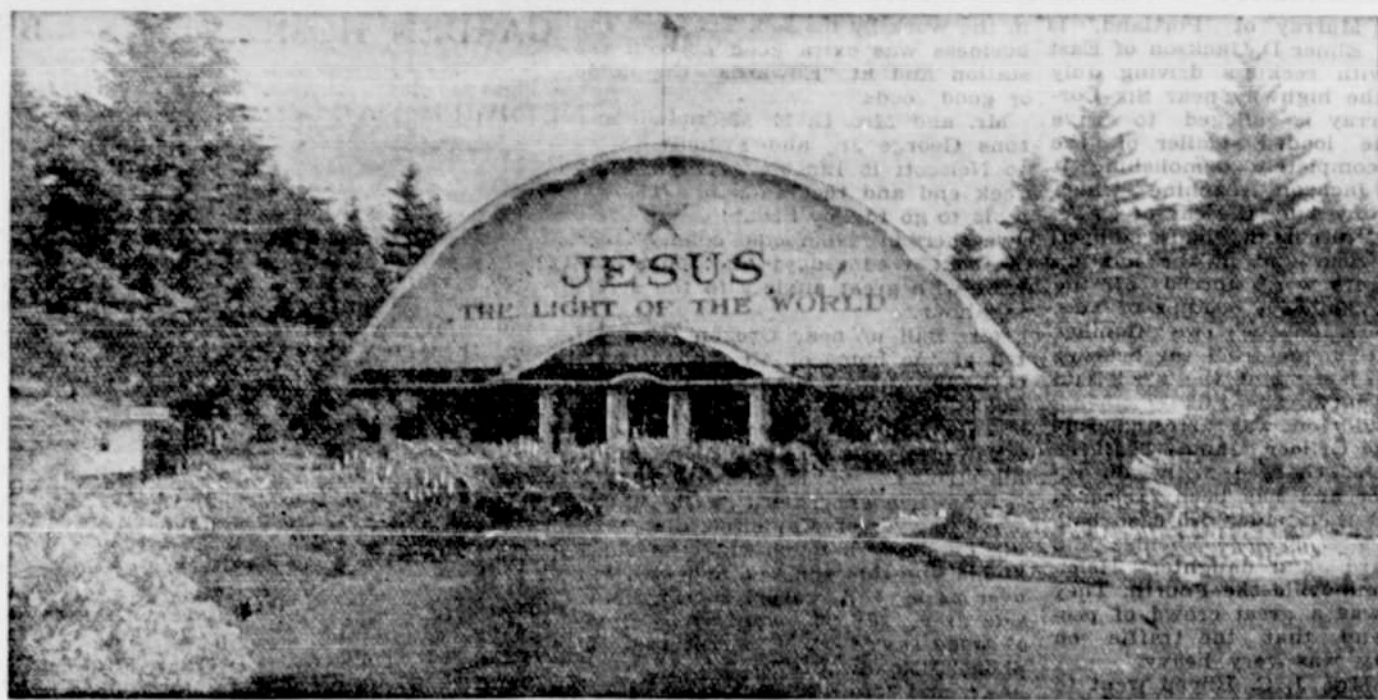
PASTURE COWS ON ALFALFA Safely. Literature Furnished. MINER NO-BLOAT MUZZLE CO. 228 Lumberman's Bldg. BE. 1348 Portland

Food Products

KLEIN'S SOUPS Eight Varieties: Pea, Bean, Onion, Mock Chicken - Rice, Fisherman's Chowder, Vegetable, Noodle, Lentil and mushroom Ask Your Grocer and Market E. E. Hornhuckle, Wholesale GA. 5819 Portland

Restaurants

PORTLAND ROSE CAFE, 136 SW Morrison, BR. 3931. Chicken Dinner on Sundays. Full course dinners 15 and 20c. Open day and night. Portland, Oregon.



Apostolic Faith Thirty-Second Annual Camp Meeting in session on grounds at 52nd Ave., and Duke street in Woodstock district, Portland.

Gaspe Legends Are Told by Native Fisher Folk

The fisher folk of the Gaspe Peninsula delight in narrating the weird stories and legends of the past. The very names of some of the Gaspe localities suggest unusual happenings: Ile au Massacre (Massacre island), where a band of Indians was massacred; Pointe Frigate (Frigate point), where an old gallean was wrecked; Manche d'Eppee (Sword Hill), where an old sword hilt, dating back to the early arrival of the first white man, was found.

The tourist who visits this land of legends of the Province of Quebec may often get some "oldest inhabitant" to relate some of these tales he will swear to be true. A favorite is that of the ghost ships which are wrecked yearly as tempest-lashed waves batter them against dark cliffs. The story goes that once a year, usually on a bright moonlit night, a terrific storm blows up and streaks of lightning throw a eerie spotlight on an ancient barque whose crew are garbed like pirates of old and armed to the teeth with cutlasses and muskets.

They will tell you, these hardy fisher folk, that there is a crash as the ship strikes the cliffs and immediately afterward the storm abates, the clouds break and again the moon beams down on a tranquil scene.

If you want news in this issue you must see that it is in our offices by 5 p. m. Wednesday.

The Popham Colonists

On October 17, 1803, the Popham colonists abandoned a settlement they had made on the Sagadahok river, in what is now Maine, during August, 1807, and sailed away upon the first supply ship sent them from England. Despite the early enthusiasm of their leader, George Popham, the settlers - cut off for more than a year from communication with friends and loved ones - were doubtless disheartened not less by homesickness due to their utter isolation than by danger, by privation and by Popham's death, and gladly accepted the first opportunity to withdraw from the enterprise. Of them a contemporary historian writes: "Discontented persons, suffering while they act, can seldom have good success, and never satisfaction."

Gourd That Grows Dishrag

The Luffa is a gourd which when ripe has a thin paper shell filled with a network of strong fibers, which are used for dishcloths, or sponges in bathing, hence the name of vegetable sponge or dishrag gourd. The bottle gourd is Lagenaria, which has sweet-scented white flowers, followed by the curious hard-shelled fruit. The calabash gourd, whose fruits are used to make bowls and dippers, is also a Lagenaria. This is not the tropical calabash, which is the hard-shelled fruit of a tree belonging to the Bigonia, or trumpet vine family; the smooth, woody, globular fruits measure a foot or more in diameter. They are used to make various domestic utensils.

Credit to Paul Bunyan

Paul Bunyan, legendary front lumberjack of Wisconsin, is credited not only with starting the cool summer breezes blowing, but also with the creation of the thousands of lakes. One fine summer day, so the story goes, Bunyan was inspired to try diving from the summit of Rib mountain into the Wisconsin river. The depositing of great quantities of water in spots for miles around by the resulting splash is said to have been the beginning of Wisconsin's multitudinous lakes. Other Bunyan fans say the lakes are the rain-filled footprints of Paul's great blue ox Babe. Between the horns Babe measured 42 ax handles and a plug of tobacco. However they came and whether Paul Bunyan had anything to do with their origin or not (geologists seem to think the glaciers had something to do with it) there are more than 7,000 lakes in the state.

Thief Swipes Auto

The golden rule message preached by Rev. E. B. Horsell at Beaverton Sunday night went unheard and unheeded by one culprit. While the sermon was in progress, Mr. Horsell's automobile was stolen from in front of the church, he reported to the Oregon state police.

CATHERINE E. WEST Funeral services were held Tuesday, July 5, at the Beaverton Christian church, for Catherine E. West, aged 73 years of route 1, Beaverton. Concluding services were held at Crescent Grove cemetery with W. E. Pegg in charge. She was the mother of Cornelius T. and Pauline West of Beaverton.

Legal Notices

NOTICE OF SHERIFF'S SALE On the 8th day of August, 1938, at the hour of ten o'clock a. m., at the east door of the Court House in Hillsboro, Washington County, Oregon, I will sell at auction to the highest bidder for cash the following described real property located in Washington County, Oregon, to-wit:

Beginning at a point which is 65.47 chains West and 3.78 chains North from the Section corner on the East side of Sec. 13 T 1 S R 1 Will. Met; thence running north 7.60 chains more or less; thence East 14.44 chains more or less to the West line of Melchior Meyers land; thence southerly along the west line of said Melchior Meyers land 7.50 chains more or less; thence West 13.22 chains more or less to the place of beginning, containing 10.12 acres, more or less subject to a public road way along the West side thereof where the same is now used for the use of mortgages and the public.

Said sale is made under execution issued out of the Circuit Court of the State of Oregon for the County of Washington to me directed in the case of Mark T. Cox vs W. J. Gerrish and Emma G. Gerrish and John M. Gerrish. J. W. CONNELL, Sheriff of Washington County, Oregon. L. M. GRAHAM, Forest Grove, Ore. Attorney for Plaintiff

Bids Invited

Sealed bids will be accepted by School District Number 48, Washington County, for insurance covering school properties. Information can be secured from the District Clerk, High School building in Beaverton. Bids to be in hands of Clerk not later than 4 p. m. August 1, 1938. The Board of Directors reserve the right to accept or reject any or all bids. ALTHEA HAULENBECK, Clerk L. W. SHORT, Chairman

Proposals Invited

Sealed bids will be accepted by School District Number 48, Washington County, Oregon, for landscaping the new grade school grounds in the City of Beaverton, located in Washington County.

Plans and specifications can be secured in the office of the District Clerk located in the High School building in Beaverton. Bids will be opened by the School District Board at the hour of 7 p. m. on Wednesday August 3. All bids must be in the hands of the District Clerk not later than 4 p. m. on August 1, 1938.

The Board of Directors reserves the right to accept or reject any or all bids. MRS. ALTHEA HAULENBECK, Clerk L. W. SHORT, Chairman

If you want news in this week's issue see that it reaches our offices Wednesday night.

So Help Me, It's True

By E. F. (Woodie) Woodman

Lifting Biggest Building Off The Ground

The biggest building in the world (weighing at least 460 million pounds and covering an entire block) could be lifted completely off the ground with the energy contained in only one gallon of Mobilgas.

G. F. Olsen, technician for General Petroleum, is authority for this statement.

"So help me, it's true," says Olsen, "such an achievement would be possible, if we could use all the energy of the gasoline. Modern motors utilize about one-tenth of this energy. If they used it all, cars would go 200 miles, instead of 20 miles, on a gallon."



Water Catches Fire

Near Auburn, Washington, is the Flaming Geyser, so called because it actually burns. Strike a match above water of the region and it bursts into flames. It is said that petroleum or gas seepage is the probable cause of the phenomenon.



10,000 Eat Cake

Crowd at Lebanon, Oregon, strawberry festival served with world's biggest short cake (2 1/2 tons). It took three barrels of strawberries, 628 eggs, 426 quarts of milk and cream.



Deer Eats From Hand

This fawn, discovered in Sequoia National park by a party of Mobilgas oil tourists, walks up and eats from your hand.



Summer Dances Every Saturday Nite American Legion Auditorium 128 NE Russell St. Sponsored by Navy Post No. 101 Music by "Elgy" Watkins Admission 35c Refreshments Available

STEAMER America to Astoria \$1 Leave Portland Leave Astoria 9 P. M. 8:30 A. M. Daily Ex Sat. Daily Ex Sun. \$1.50 Round Trip Unlimited Return Boat Docked at Municipal Term. No. 2 FOOT OF EAST OAK ST. EA. 9957

Riverview Cemetery Thirty Per Cent of Lot Receipts are set aside for Perpetual Care LOT \$30 UP Burial Service with Cement Grave, Box \$27 No Profits No Assessments West End Sellwood Bridge

The MORNINGLIGHT CHAPEL Serene Beauty - Perfect Service J. P. Finley & Son FOURTH AT MONTGOMERY ATwater 2181

Flowers TOMMY LUKE Phone AT. 5131 Portland

Brick & Building Tile SEE YOUR LOCAL DEALER Columbia Brick Works 1820 SE Water - Portland Kilns at Gresham-Sylvan-Salem