

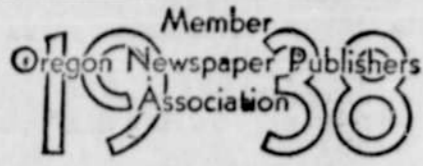
# BEAVERTON ENTERPRISE

H. H. JEFFRIES, Publisher

Published Friday of each week by the Pioneer Publishing Co., at Beaverton, Oregon. Entered as second-class matter at the postoffice at Beaverton, Ore.

**SUBSCRIPTION RATES**  
One Year \$1.00 Three Months .35c  
Six Months .50 Subscription Payable in Advance.

Enterprise Bldg., Cor. Short St. and Tualatin Valley Highway, Phone 7503  
Portland Office—407-408 Dekum Bldg., Phone AT. 6591  
Hillsboro Office—Room 5, Delta Bldg., Phone 1641  
E. M. Golder, Field Representative



## NO DICTATORSHIP WITH CONTENTED PEOPLE

Dictatorships cannot be set up or be made to thrive in a country where its people are contented and the only way a dictator can come in power is through avenues of discontent and industrial unrest. When administrative affairs are so handled as to involve the country in various phases of upheaval, unrest and discontent among citizens, then, the works of would be dictators can have some effect.

Huge appropriations every now and then, some only temporary, as a stimulus to the country at large. What we need is building up of confidence to the extent that industry goes ahead, employing young men and women to build up their buying power and that's what will improve business conditions and keep people happy and what groups of happy contented people would stand for dictatorship?

## BABSON SAYS

Continued from Page 1

fearful toll. How long Il Duce can continue to keep going by juggling his budget figures and printing paper money is anybody's guess.

Japan May "Crack" First  
Japan's national debt has more than doubled in seven years. It is now equal her annual national income. This debt, increased by vast armament outlays and the China War, is being loaded in her banks. Currently, only one-third of Japan's annual budget is being met by taxes. Because she is so dependent on outside countries for many raw materials, Japan may be the first nation to hit the skids.

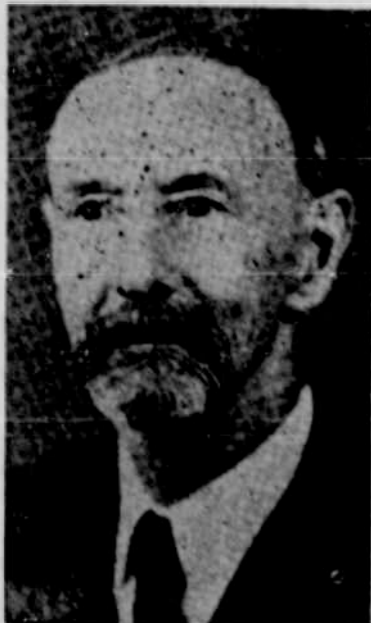
Her situation—and all the others for that matter—is like the man in your community who is spending more than he is earning. How long he can buy on credit, no one can predict. But everyone knows that, unless he soon reforms, he will end up in the bankruptcy court.

France and Great Britain are also in a pickle. France ranks as the weakest of the democracies from a financial standpoint. Her budget is hopelessly unbalanced and has been for years. There may be further devaluation of the franc, however, before the final blow comes. Great Britain is the only major nation to have balanced her budget in the last eight years—but she did it only three times. Her enormous rearmament load will this year carry expenses far above tax receipts—and taxes are already sky-high.

**Thirty Billion Dollar Deficits**  
Altogether the combined government deficits of the above five powers, plus our own, will this year equal about seven billion dollars. Here is a tabulation showing the approximate deficits of these major nations since 1930. Undoubtedly the actual shortages are greater than even the published figures indicate:

United States	\$20,000,000,000
Great Britain	2,500,000,000
Japan	2,000,000,000
France	2,000,000,000
Germany	1,500,000,000
Italy	1,000,000,000
<b>Total</b>	<b>\$29,000,000,000</b>

Unless a renewed spirit of brotherhood and rebirth of character sweep the world, there can be only one result: The steady cheapening of the value of all currencies in terms of goods. The dollar, the franc, and other currencies will buy fewer and fewer pounds of beef, copper, cotton, and rubber, fewer and fewer bushels of wheat and corn. This means inflation and soaring living costs. We are in a long-term bear market for cash; and a long-term bull market for goods, real estate, and common stocks. The entire world—from the Thames to the Yangtze—must choose between character and chaos!



## B. S. MARTIN

Candidate for Justice of the Supreme Court  
Position No. 3

Many years of practice in the courts of this state.

Justice should be applicable to all alike. Paid Adv.

## Budgerigar, Bird Clown, Imitator, Like a Parrot

"Budgerigar" is the Australian bushman's name for the naturalist's Melopsittacus undulatus, an Australian ground parakeet which is sometimes called the shell parakeet, and also the undulated grass parakeet, though it does not belong to the group of typical Australian grass parakeets, which are all much larger birds, writes J. I. Lawrence in the New York Sun.

The "budgie," as it is affectionately known in London, is one of the monkeys of the bird world; a clown, an acrobat, a droll humorist, and a creature of exceptional intelligence and personality—when it has room for the expansion and development of personality. Though it is smaller than some canaries it acquires impressive vocal accomplishments and often imitates the human voice and speech like the large parrots.

The orthodox aviculturist usually holds all domestic cage birds in contempt, as of doubtful scientific value, but the breeders of canaries, budgerigars, white Java sparrows, Bengalese mannikins, and some other domesticated birds find comfort in the assurance that their pets are happy and contented in confinement. No one can question the blithe spirit of a budgerigar, as it frolics and performs outlandish antics in its cage the whole day long.

## Grasshoppers and Locusts

Grasshopper plagues are often associated with vegetation destruction by the insect commonly referred to as the 17-year locust, a name that is incorrect in at least two particulars, according to an authority in the Washington Star: (1) It is not a locust at all, that name being applied only to members of the grasshopper family, and (2) while it has a 17-year period, it also has a 13-year period. It has been so long misnamed by the name of locust, however, that there is no hope of divesting it of that incorrect appellation, and in the regions where there is the longer period of recurrence it will continue to be known as the 17-year locust, and in the areas of the shorter recurrence period as the 13-year locust. The scientifically accepted name of periodical cicada, however, is the only one that exactly fits.

## Nansen, the Explorer

Fridtjof Nansen, Norwegian explorer, statesman and humanitarian, was the first scientist successfully to exploit the idea of a floating observation station amid the Polar ice; and his station—that immortal ship, the Fram—drifted three years in the great ice-pack, deliberately driven into a region which no rescue vessel could ever hope to reach. Nansen was the first polar explorer to ignore the old axiom that an expedition must not advance without securing its "line of retreat." Fram (meaning "forward") was his motto and his method. He knew that once he entered the ice no question of retreat could arise.

## How Savages Elongated the Ear

A barbarous custom practiced among some savage Indian tribes in the very early days was ear-splitting. To elongate the ear the rim was sliced around from the top to the bottom, leaving the sliced portion attached at the lobe. Then a weight was fastened to the end of the rim, as it hung down, so as to stretch it while the ear healed. This was supposed to beautify the ears, just as lip stretching among the Ubangis of Africa is supposed to beautify the lips.

## Elements Little Known

Of the 87 known elements, 17 or nearly one-fifth are rare earths, says a report to the American Chemical Society. Sixteen of the 17 rare earths have been isolated and their atomic weights determined, yet very little is known about this group of elements.

## So Help Me, It's True

By E. F. (Woodie) Woodman

### No, This Isn't A Steamboat

... It's the world's FIRST pleasure power boat, grand-daddy of the modern motor boat. The engine of this craft, built in 1855, suggests that someone set a hot water heater on a sewing machine.

Actually, it was more like a steam engine, as the naphtha, then used, was heated and expanded rather than ignited for power, as is the Mobilgas used in the speed boats and automobiles of today.



### Prehistoric Apartment House

Assumed to have been the abode of the oldest semi-civilized inhabitants of the Southwest, the group of apartments shown below housed hundreds of persons long before the discovery of America. These remains of a portion of "Lost City" were uncovered in Nevada.

The building was circular and had both rectangular and circular rooms. The Lost City was two miles wide and six miles long. It probably had an aborigine population of 10,000 to 20,000. Implements discovered show they cultivated corn and cotton.

The city was located on the east bank of Muddy River, a mile north of St. Thomas.



### World's Most Unique Service Station

This airplane isn't "taking off." It's probably the world's most unique service station. Once, it was the famous F-2, largest land transport, with load weight of 11 tons. Now it attracts motorists to a busy corner where General Petroleum products are dispensed.



### Home of World's Highest Fish

Here's Tulinayo, highest lake in America, 12,555 feet up, and three miles northeast of Mt. Whitney's summit. It's such a deep blue that this picture shows it as black. It was stocked with Golden Trout in the summer of 1936. The white spots are glaciers. Photo by Marjory Bridge Farquhar of Berkeley, noted woman alpinist.

### Only Albino Halibut Ever Caught

... Among millions of fish taken from the sea this albino halibut, in Seattle's frozen fish exhibit, is believed to be the only one ever captured. Alongside it stands pettie Ellen Hamilton, Paramount theatre employee, holding Filpruf bottle of Mobiloil to illustrate contrast in color with that of the fish.

## All Teas Classified in

### Three General Divisions

All teas are classified into three general divisions—the black or fully fermented; the green or unfermented; and the oolong or semi-fermented. Usually the tea drinker prefers one of these kinds. There is a noticeable difference in the flavor and aroma of each.

Some black teas are graded according to leaf sizes. After picking, the leaves are separated into five grades: Flowery Orange Pekoe, Orange Pekoe, Pekoe Souchong, and Souchong. Flower Orange Pekoe is made up of the most tender leaves taken from the tip end of the tea plant. Souchong represents the coarsest leaf used for tea. These terms do not have any specific reference to the cup quality of tea, nor do they indicate that the scent or flavor of oranges is present.

Next to black teas, observes an authority in the St. Louis Post-Dispatch, the green or unfermented teas are most numerous in the United States. These come to us chiefly from China and Japan. Green teas have a sharper, more astringent taste than black ones.

Oolong tea, or the semi-fermented type resembles a blend of black and green tea. It comes mostly from the island of Formosa and from China. Oologings are in-between in flavor as well as color.

Tannin, caffeine, and the volatile oils are the most important constituents of tea. Tannin gives to tea a brisk, pungent flavor. Caffeine provides mild stimulation. And many persons think that the volatile oils make the most difference in tea flavor. The "body" of a cup of tea depends upon the soluble materials that come out into the liquid as the tea steeps.

### Sicily Filled With Ruins

At the very tip of Italy lies Sicily which at one time or another since 1500 B. C. was ruled over by Phoenicians, Greeks, Carthaginians, Romans, Saracens, Norman, Spaniards, and finally the people of Italy. Sicily is filled with the ruins of old temples, lying in state, in fields of multi-colored flowers. At Syracuse the tragedies of the Greeks are presented in an open-air theater, while ancient baths draw the ailing to Acireale. Palermo is the capital and chief port of the island, while Taormina is its most famous resort.

If you want news in this issue you must see that it is in our offices by 5 p. m. Wednesday.

### The Pitcher Proverb

"The pitcher goes so often to the water that it is broken at last." This is the form in which the English proverb is generally quoted. It belongs to the common folk sayings of several nations. Its most famous expression in literature is in Cervantes' "Don Quixote"; "So many times the pitcher goes to the fountain!" Meaning that it gets broken. But the same proverb is found four centuries earlier by a French writer, Gautier de Coligni.

### Rabbit Teeth Grow Rapidly

The front teeth of the rabbit grow so rapidly that they have to be worn down regularly by gnawing on some hard substance. When a tooth does not meet its upper or lower companion, says Collier's Weekly, the animal cannot wear it down and serious trouble is likely to ensue. Some years ago a wild rabbit was discovered with a tooth that had grown so far in a curved direction that it had entered the animal's neck.

### Admiral Dewey's Training

Admiral Dewey received his training at Annapolis. He was appointed to the Naval academy September 23, 1854, and was graduated in 1858. He directed the battle of Manila bay from his flagship, the Olympia, and the Olympia headed the procession of American warships into the bay.

### Lumber Measure

Sometimes the lumberman talks a different language than we do. We asked him what he meant by "board feet," notes a writer in Hoard's Dairyman. A board foot is one piece of wood one inch thick, a foot long, and a foot wide, we learn. How do you figure the number of board feet in an order of lumber we might leave? It's like this: Multiply the number of pieces by the length in feet; this times the width in inches, and that multiplied by the thickness in inches. Divide your answer by 12 and the number of "board feet" is the result.

### Admiral Dewey's Training

Admiral Dewey received his training at Annapolis. He was appointed to the Naval academy September 23, 1854, and was graduated in 1858. He directed the battle of Manila bay from his flagship, the Olympia, and the Olympia headed the procession of American warships into the bay.

### NOTICE OF MEETING OF FIRE DISTRICT NO. 3

Multnomah County, Multnomah, Ore. Notice is hereby given that the Board of Directors of Fire District No. 3, Multnomah County, Multnomah, Oregon, has fixed the 5th day of May, 1938, at the hour of 8 p. m. of said day, as the time, and the Multnomah Public School Building, Multnomah, Oregon, as the place of a public meeting, at which the proposed budget of the District will be presented, said budget as presented to provide for the raising of sufficient moneys, either by taxation or borrowing, for the purpose of providing funds to defray the expenses of establishment, equipment and maintenance of the District, and to provide money necessary for the purchase, repair, up-keep and replacement of apparatus and equipment; building (or rental), repairs and up-keep of a fire station, salaries, wages, and incidental expenses. All property owners of the District are entitled to vote at said meeting. This notice is published pursuant to Section 46-2209, et sec., Oregon Code Annotated, 1930. Published in the Multnomah Press, Multnomah, Oregon. Date of first publication: April 22, 1938. Date of last publication: April 29, 1938.

### Lee Truck Service

Local and Long Distance HAULING  
Phone Beaverton 7255  
Res. Aloha Oregon, Prompt Service



I'd like to Meet You and Talk Things Over

## Andrew C. "Andy" Burk

Democrat  
Marion County's Friendly Sheriff  
Candidate for nomination as Congressman, First District of Oregon  
If successful, I want to represent YOUR interests  
Paid Adv.

## W. E. PEGG

Mortician  
Day or Night  
BEAVERTON OREGON

## P. E. HAGG

Hauling Contractor  
Sand, Gravel, Crushed Rock  
Road Gravel  
PHONE TIGARD 46  
Route 6, Box 888 Portland

## Jack's Barber Shop

J. J. LANGSTON, Prop.  
Next to Postoffice  
MULTNOMAH  
"Service with Courtesy Here"



Portland

## The MORNINGLIGHT CHAPEL

Serene Beauty - Perfect Service  
J. P. Finley & Son  
FOURTH AT MONTGOMERY  
ATwater 2181

## Riverview Cemetery

Thirty Per Cent of Lot Receipts are set aside for Perpetual Care  
LOT \$30 UP  
Burial Service with Cement Grave Box \$27  
No Profits  
No Assessments  
West End Sellwood Bridge

## Price Does Not Govern Our Standard of Service

Price makes no difference, at Holman & Lutz in the quality of service rendered. . . . Because the overhead is distributed among so many funerals . . . the cost of the individual service is consequently lowered.

Complete, impressive services from Holman & Lutz are available to all families regardless of income. Then, too, there's NO extra charge for hearse or limousine within this vicinity.

For those who do not have ready funds, Convenient Monthly Payments can be arranged Whether Conducted Here or in Portland

## Holman and Lutz, Inc.

DIRECTORS OF FUNERALS  
Colonial Mortuary • Holman Chapel  
Fourteenth and Sandy Blvd. • S. W. Third and Salmon

PORTLAND  
PHONE EAST 4111