

BEAVERTON ENTERPRISE

H. H. JEFFRIES, Publisher

Published Friday of each week by the Pioneer Publishing Co. at Beaverton Oregon. Entered as second-class matter at the postoffice at Beaverton, Ore.

Subscription Rates
One Year \$1.00 Three Months .35c
Six Months .50 Subscriptions Payable in Advance

Enterprise Bldg., Cor. Short St. and Tualatin Valley Highway Phone 7503
Portland Office—408 Dekum Bldg., Phone ATwater 5914

DON'T RISK LIVES OF SCHOOL CHILDREN

In a few weeks, the nation's schools will open for the fall term. And this places one vast responsibility upon the shoulders of school board trustees and members: To make our institutions of learning safe from fire.

In many schools that are thought of as modern there are too few exits, stairways are badly constructed, doors open inward (in spite of the fact that this is one of the worst of all hazards), heating equipment is faulty. In others fire drills are not carried out periodically. So it goes, down a long list of hazards. Unknowingly, we are risking thousands of young lives.

Officials should check school buildings and un-earth hazards. Fire marshals are always glad to lend assistance. Not a single school should open its doors this year without an exhaustive inspection to discover risks, and correct them.

The nation's parents should make their voices felt, and insist that the lives of their children be given the utmost protection while at school.

WASHINGTON COUNTY FAIR

In summarizing possibilities of the Washington County Fair being larger and better than in previous years, little remains undone for its success. Ed L. Moore is to be commended for his untiring work in preparation for the big event.

RED CROSS EVER READY

Another splendid bit of voluntary service was executed by the Red Cross, when the organization appropriated \$2000 to aid Americans stranded in war-torn Spain.

The Red Cross membership drive comes in November. When you are solicited, bear in mind the above and numerous other acts of kindness rendered people of every clime by the ever ready Red Cross workers.

Join gladly and feel thankful such an organization exists.

A recent headline read "Safety will be Thesis of New Cars." Is it the fault of automobiles, that they kill or get smashed up? In very few cases. The fault rests with thoughtless maniacs piloting machines.

Whom Do You Want For President?

Continued from Page 1

national balloting, as compiled by returns from other weekly newspapers will also be published in these columns week by week as soon as they are available.

Straw Vote Ballot

The two major party candidate's names, Roosevelt and Landon, are given top position on our straw-vote ballot inasmuch as one of these major party candidates is generally expected to be returned the winner in the November elections. The names of the other officially nominated candidates

for the Presidency are listed below with no thought of advantage in ballot position to any of them.

Let us join hands in this nation-wide vote. Let us help express the political sentiment at this time of the voters here.

You are under no obligation in casting a ballot in this straw-vote test. You do not have to sign your name. Simply write in the name of the town and state where you will vote in November so that accurate national tabulation can be made.

Remember, your favorite candidate is depending upon you to help show his strength. Clip the ballot now. Vote as you choose, then mail or bring your ballot to the office of this newspaper.

Vote and Mail Straw-Ballot Below

STRAW VOTE BALLOT

Nation-Wide Vote for PRESIDENT

THIS Straw-Vote is being conducted by co-operating weekly newspapers located in states throughout the nation to show pre-election sentiment of small town and rural America in their choice for President for the next four years.

TO VOTE: Mark a cross X in the square before the name of the candidate you prefer.

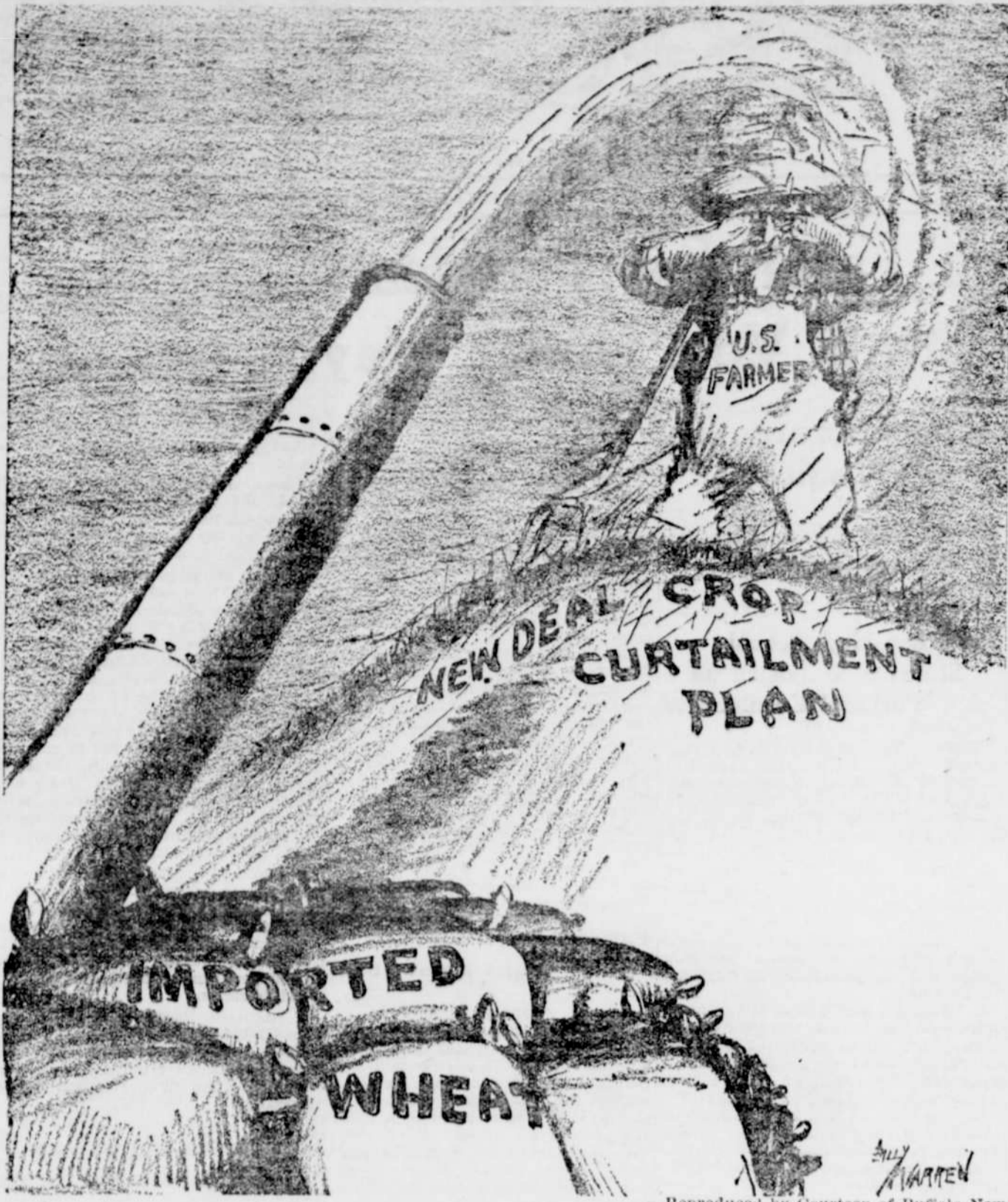
Group or club voting is NOT allowed. Only single individual votes will be counted. A voter need not sign his or her name, but to assist in national tabulation please fill in name of town and state, below.

Vote for one only of these candidates

- ROOSEVELT (Democratic)
- LANDON (Republican)
- LEMKE (Union)
- THOMAS (Socialist)
- COLVIN (Prohibitionist)
- BROWDER (Communist)

Town.....State.....

WHEN THE CHAFF GETS IN HIS EYES



—Reproduced by Courtesy of Buffalo News

COMMENTS

Where Distribution Failed

Sir:—When the present Administration took office, God had blessed us with abundance, plenty of everything for all, but it was not distributed. This Administration did not try to solve distribution of that abundance but instead wantonly destroyed millions of pigs, millions of bushels of wheat, corn, cotton, etc., and in doing that unjustifiable, ignoble act, not only rebuked God for His wisdom in providing abundance but cruelly insulted Him, and in doing so, also, as much as said—"Get Thee behind me, God, I'll show You how to provide for the American people."

J. RANDOLPH BEVIS

Advise to Republicans

Sir:—The landslide that put President Roosevelt into the saddle was accomplished largely by Republican votes. It is high time that the Republican voters do some scientific thinking and put into reverse the error of their ways that will bring about a Republican landslide that will bring safe conduct and prosperity again to the people of the United States of America.

GEORGE S. HOWE

It takes Courage to be Yourself

There is a surprisingly large number of people who do not have the courage to live a normal existence. They accept apparently unquestioningly all of the advice that every one has to give with the result that one by one the broadening things of life are left out until it becomes merely a round of narrow, petty, colorless, commonplace things, trite and uninteresting. The mind wears of its imprisonment and old age and decay sets in. It takes courage to live one's own life and to refuse to conform to the blighting exactions of the humdrum and the commonplace.—Southwestern Oregon News.

It will pay to trade with those who advertise with us.

IS YOUR HAIR FINE?
IS YOUR HAIR GREY?
IS YOUR HAIR HARD TO CURL?

We will give you PERMANENT long fast curls free. WAVES \$2.50
Please bring up DUART OIL \$3.50
your hair prob- EUGENE \$5.00
lems. SHAMPOO and FINGER WAVE 75c

We believe we have the best Finger-waves in Portland. Our waves last longer. Let us prove it. Our New Location 217 S. W. Broadway Open Evenings

Green Front Beauty Shop AT 3516

THURS. DANCE FRI. SAT.
MON

With Claude Brereton and His Music

The Lonesome Club
821 S. W. 4th Ave. Portland
ADMISSION ALWAYS 25c

Cataract Once Located on Columbia River

There was once a mighty cataract, aeons ago, on the Columbia river in Washington over which passed a flow of water forty times the volume of Niagara. This falls, now dry, was nearly three miles wide and 417 feet high. Such are the amazing statistics dug up by a party of Mohliol tourists who recently viewed Dry Falls State Park, near the new Grand Coulee dam of Eastern Washington, according to the statement of C. J. Barnes, local manager of the General Petroleum Corporation.

Oregon Seed in Demand As Drouth Cuts Supply

Many Oregon farmers who had not contemplated harvesting some crops for seed have now decided to allow them to mature for this purpose. The severe and continued drouth in the middle west has had a marked effect upon future field supplies. Oregon raises a large tonnage of field seeds now, and will probably be called upon to supply a larger proportion of the country's needs than usual.

Read all the ads, they are worth it.

Dr. Chan Lam Chinese Medicine Co.
Remedies for blood, kidney and urinary troubles of men and women; ailments of stomach, glands, liver, skin, of female complaints. Special remedies for sugar diabetes, colitis and Rheumatism.

NATUROPATHIC PHYSICIANS
Office hours daily 10 to 6; Sundays 11 to 12
612 SW 2d Ave., cor. Alder, Portland
Call or Write—Phone ATwater 1016

J. O. JOHNSON
Attorney at Law
Portland office 925 Yeon Bldg.
Tigard office Johnson Bldg., Wednesday and Saturday
Phones Tigard 52 and 0351

DANCE
Every Sunday Night
Boat Swan
Del Milne Orchestra
Leaves 8:30 P. M.
FOOT OF ALDER STREET

SWIM
At McMILLAN'S LAKE OSWEGO
25c
9:00 A.M. to 11:00 P.M.
Half Mile South of Oswego on Main Pacific Highway
BATHING & CANOEING
Cawego 1430

Consistent advertising will bring certain and definite results.

VISIT BEAUTIFUL WEST HILLS MEMORIAL PARK

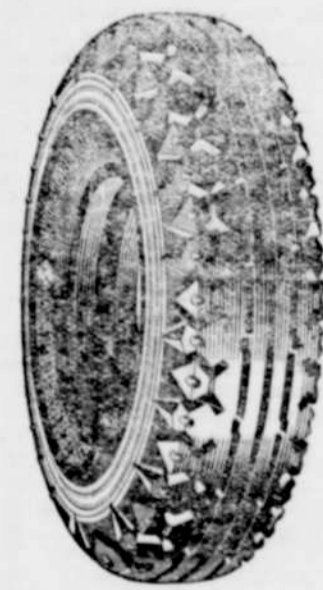
Offers you the opportunity to choose a permanent resting place for some loved one within a park dedicated as a Memorial to all those who are resting there. A park of beauty, with its wooded hills, its bird songs and its peaceful sunny slopes overlooking the Tualatin Valley below.

Perpetual Care will Maintain it Through Future Generations
LOTS ARE SOLD AT REASONABLE PRICES—EASY TERMS
For complete information call or write 420 Mead Building, Portland

APOSTOLIC FAITH OPENS FALL CAMPAIGN

N. W. Sixth and Burnside
SERVICES—Sunday, 10:20, 2:30 and 7:30; Every Evening, 7:45
Except Monday and Saturday
ORCHESTRA CONCERT SUNDAY EVENING
SPECIAL SINGING—THE ENTIRE GOSPEL PREACHED
NO COLLECTIONS
"A Spiritual Place to Worship"

Truck Owners Attention!!



RAY GRIMSHAW INC. PRESENTS A NEW PROVEN METHOD FOR RE-CAPPING TRUCK TIRES

When your truck tires wear smooth don't throw them away, or continue to run them for the few dangerous miles left in the tread! Send them to us for RE-CAPPING. Thousands of miles of additional wear are being obtained by other operators at approximately 1/4 of a new tire.

By this revolutionary method a band of new live rubber is fused with the old tread rubber under tremendous pressure not possible with any other method.

The new rubber becomes an integral part of the tire. The sidewalls, shoulders or breaker strip are not subjected to injurious heat.

THE CARCASS IS NOT HEAT-WEAKENED. The old tire is not distorted in any manner during the process. It retains its original shape.

ONLY THE NEW GRIMSHAW METHOD OFFERS ALL OF THESE ADVANTAGES
SHIP YOUR TIRES IN NOW!
RETURN FREIGHT PREPAID
Buy your Tires and Re-Capping on our Easy Budget Plan

Distributors for SEIBERLING TIRES—HOBBS BATTERIES
RAY GRIMSHAW, Inc.
325 S. E. Union Ave. Phone EA 1171 Portland