

THE BEAVERTON ENTERPRISE

H. H. JEFFRIES, Publisher

Member National Editorial Association and Oregon State Editorial Association

Complete coverage of eastern Washington county and western Multnomah county.

Published Friday of each week by Pioneer Publishing Co. at Beaverton, Ore.

Entered as second class matter at the postoffice at Beaverton, Oregon, under the act of Congress of March 3, 1879.

Subscription price: \$1.00 a year in advance; advertising rates on application.

OFFICES

Tigard—Tigard Pharmacy—Phone Tigard 143.
Aloha—Aloha Lumber Co.—Phone Beaverton 4252.
Beaverton—Broadway near O. E. tracks—Phone 7503.
Multnomah—Multnomah Electric Store, Broadway 0791
Portland—408 Dekum building—Phone Broadway 0791.

OFF THE FRONT PAGE

Miss Amelia Earhart, the first woman to fly across the Atlantic, has participated in a feat of daring. She, with her companions, Wilmer Stultz and Lou Gordon, tend to close the act of spectacular flights, and get all future aviators off of the front page.

A peculiar psychology, coupled with a big gamble, prompt men and women to start over continents and oceans in air. Flushed with the success of the great Lindbergh, they have proved trans-oceanic flights a fact and translated Lindy's mysterious and miraculous accomplishment into reality. Aviation now only awaits planes large enough to haul us all.

THE TRUTH ABOUT FARM RELIEF

Political prophets predict that the farmers will hold the balance of power in the coming presidential election. They will. The politicians will hold the power, and the farmers will hold the balance of it.

Some say the middle-west farm states will decide the issue in favor of the party that promises them the most. But to erroneously depend upon the "farm vote" to decide an issue is to depend upon fallacious reasoning, because there isn't and never was a truly "farm" vote.

The farmers, by their inherent nature and independence of thought and action do not vote in droves nor herd like sheep. The farmer thinks for himself and votes for himself; and remember, there are a lot of farmers.

If the farmers would cooperate they wouldn't need any relief. That is, they wouldn't have needed the relief they need now. They would have already brought about their own relief. The farmer suffers by the same independence in which he finds a satisfaction of superiority.

If the ballots of all the farmers could be laid out on a table, their votes of the past 20 years would look like a hen with dirty feet had been scratching for something to eat for her brood.

He who thinks there is a "farm" vote is kidding himself. There should be no farm vote as such, but there should be a business vote, because the farmer is strictly a business man and should vote as a business man votes. When a so-called farmer becomes an agriculturist engaged in the most important secular business in the world—that of producing what the world needs, he will force recognition.

THE SOCIAL POWER OF MUSIC

What good is music to a community? It is like asking what good is music to the individual. Music is the great leveler—the universal language. A home without music is a home where something is lacking. A community without music is a community without the power to socialize itself. A municipal or town band is one of the greatest assets known to the modern world. A school, college or other institution without an orchestra or band is an institution lacking in one of the finest things of life.

The radio, instead of decreasing the desire to perform music for one's self, has increased this desire. It has brought back the old songs, the old standard melodies and folk songs that have been lost to a world seeking the new things. But the radio and phonograph have also shown the way for young and old people to learn an instrument.

One of the greatest things any community can do is to support a community band or orchestra. A boy or girl who masters an instrument of music, whether it be the flute, the drum, the cornet, violin or piano, has learned the art of self control and in turn can master the harsher situations of life. When you see a boy playing in the "town band" you know he has learned to cooperate. He knows what harmony is and exemplifies that virtue in later life. He is, above all, accomplishing, and that is what education is for. He is engaged in work and play at the same time. In truth, his work is play. Search the records of history, and you will find that the boys of the band turned out right in the great majority of cases.

The greatest benefit of all has not been mentioned. It is that those who perform music receive more good from the act of performing than those who listen. Learning by doing is more lasting than learning by "being taught." Educators know that. But the band is a college in which one may enter without a lot of preliminaries. It is the great university of early life, where the boy or girl learns the world of cooperation, of harmony, of doing good, of pleasing others, and above all, of doing the thing for himself and for herself.

When you say a kind word for group music, when you boost for a community band or orchestra, and when you give a dollar toward helping support such an organization, you have done a wonderful thing for your home community, and for the youth of your community.

HIGHWAY CONDITIONS



Crater Lake

Crater Lake lodge opened for its season, June 22.

Columbia River Highway

Oiling operations which have been under way between Heppner junction and Pendleton are completed.

Mt. Hood Highway

Bituminous macadam construction is under way between Cherryville and Brightwood. Heavy oil is being used which is immediately covered with screenings and cars will not be required to travel on fresh oil. Slight delays to cars on account of one-way traffic past the operations.

Hereford-Unity

About 12 miles of construction work between Hereford and Unity, fair.

Ochoco Highway

Some construction work between Mitchell and Dayville.

Wallowa Highway

The road to Wallowa is good. Fresh oil only where they are patching up the roads. The road from Joseph to the lake, about six miles, is very good graded road.

Narada-Paradise Stage Service

Stages between Narada Falls and Paradise Inn on an hourly schedule, leaving Paradise Inn on the hour and Narada Falls on the half hour. First run is made from Narada at 7:30 a. m. and hourly thereafter until 7:30 p. m. It is expected the road will be open for private cars July 1.

Santiam Highway

The Santiam highway is closed between Cascadia and Fish Lake, but will probably be open by about July 1, depending upon weather conditions.

Crater Lake National park is now open for motor travel. The touring bureau of the Oregon State Motor association reports road from both Medford and Klamath Falls as being in excellent condition as far as Anna Springs camp. From Anna Springs camp to the rim of the crater, the road has been recently cleared of snow and is not in the excellent condition of the highway below Anna Springs, but it is in good condition and is carrying travel with no trouble at all. Hotel accommodations, as well as camping grounds, are now available at Crater Lake.

COMMENTS

While Oregonians have almost gone out of their way to claim Hoover as an Oregonian, he, himself, has not done much thus far to strengthen that relationship. Of course, Oregon, has a small vote in the electoral college; still in one presidential election Oregon's vote was a deciding factor.—McMinnville, News-Reporter.

Ralph Williams of Dallas, Oregon national republican committeeman, became a national figure through his work preparing for the recent republican convention at Kansas City. Of course, Portland claims him, but that is no worse than locating Multnomah Falls in California.—Dallas Itemizer-Observer.

The band wagon booster is useful in increasing the noise when success is being celebrated, but he is darn poor stuff to rely on when the band wagon is stuck in the mud and needs real work to pull out.—Molalla Pioneer.

Hoover was nominated on the first ballot by the republicans for president, and the followers of the grand old party are confident of success in November. Mr. Hoover is undoubtedly one of the biggest men in the country today, but the treatment of the farm problem in the republican platform is likely to take the "hoo" out of Hoover.—Hillsboro Argus.

COUNTY AGENT NOTES

Potato growers who want potato seed crops inspected by the potato certification board should make application to the county agent for this service this month. Early application is necessary that arrangements may be made with the potato certification board. More than the usual amount of certified seed potatoes are being bought by local growers. The price is somewhat lower than in previous years and potato growers are taking advantage of the opportunity to get a start of improved Burbank seed which is relatively high producing and more free from disease than the average run of seed potatoes.

Strawberry Root Weevil

A small type of strawberry root weevil has been out for two to three weeks and many growers have placed poisoned bait for this early brood. In many of the hill sections of the county, another type of root weevil is still in the larval stage but are beginning to come out in the adult beetle stage at which time they may be poisoned with commercial strawberry root weevil poisons or home mixtures as described in Station Circular No. 79 of the Oregon Agricultural college.

Superphosphate and lime for alfalfa is being tested out on four soil types in Washington county by the O. A. C. extension service.

Phosphate 300 pounds per acre, for what is known as the "Hillsboro loam soils about Hillsboro and extending to Cornelius and southward, has given very beneficial results as is shown by four years trial work on the Charles Coppens farm at Newton station.

In April 1925 the county agent applied 300 pounds of superphosphate per acre on test plots on this farm where lime had previously been used at the rate of 1000 pounds per acre. Without any additional applications the fertilized area yielded double the amount of hay in 1926 and 1927.

Last fall, 1927, Mr. Coppens applied 400 pounds of superphosphate per acre and left about one-fourth of an acre unfertilized. When the first crop was dry enough to put in the barn this spring the fertilized area gave a return of 7840 pounds of hay per acre and the unfertilized area 2560 pounds of hay. Showing a difference of 5280 pounds per acre due to the use of superphosphate.

This four years result is rather exceptional, but it will no doubt be a guide for the use of superphosphate on the Hillsboro loam soil type of Washington county.

POTATO DISEASE SPREAD CAUSING DEEP CONCERN

With virus diseases of potatoes on the increase in spite of the work of certification of seed, plant disease specialists of the entire northwest are watching with interest the cooperative work being done by the Montana, Utah and Oregon experiment stations, aided by the federal bureau of plant industry. Examination of the central trial plots at the Oregon station made this last week-end show conclusively the advantage of tuber-unit roguing as opposed to mass roguing. Some fields have been a total loss just from mosaic diseases.

Though the advance of certification has checked the spread of mosaic diseases and is far superior to simple selection, the seriousness of the disease situation is forcing attention to even more positive methods of control of which the tuber-unit plan is the most promising for scald plots.

Under this method of roguing the potatoes are planted with all pieces

from a single tuber placed consecutively in the row with a perceptible space left between the groups. A machine has been developed now which cuts the potatoes and plants them in this manner at one operation.

When the plants come up, any doubtful cases are more easily detected where all the plants from one tuber are together, find the scientists, and are thus eliminated earlier. Furthermore where one plant shows disease earlier than others, all of that group are rogued out at once, thus eliminating future sources of infection.

By using this plan any grower of certified seed may maintain a farm seed plot in which he can effectively reduce disease from year to year instead of merely checking its spread. Consequently the specialists while here expressed the belief that

such a seed plot should be made a prerequisite to entering the fields for certification.

M. B. McKay, plant pathologist of the Oregon station, is in charge of the central station work while Dr. B. L. Richards of Utah and Dr. P. A. Young and H. E. Morris of Montana are handling the work at those stations. Much benefit from the cooperative work is apparent, they say.

The road to yesterday is full of intersections.

Song of the old folks: "Nobody Knows How Spry I Am."

Some of this June bride coffee contains grounds for divorce.

Aviators are supermen: they rise above other motorists' troubles.

Enjoy the "Silver Grays"



These are the finest of motor coaches built and equipped to give the utmost in comfort and safety for highway travel.

For Safety: Drivers with Southern Pacific responsibility. 4-wheel air brakes—rigid inspection and supervision. Safe.

For Comfort: Seats air-cushioned—interiors immaculately clean, plate glass windows, rich mahogany trim. Well ventilated but not drafty. Lights at night you can read by. Restful.

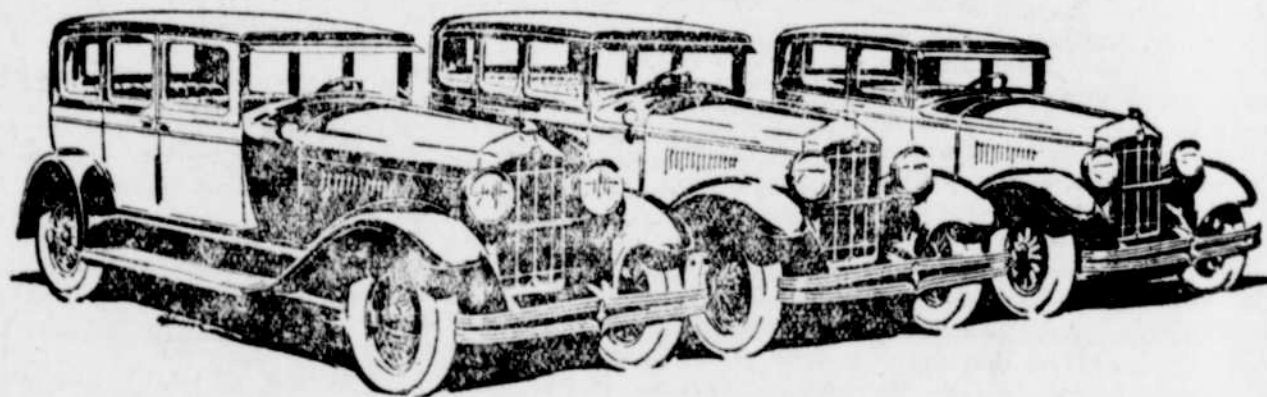
For Economy: Buy 10-ride tickets. Good for 60 days. Use them on train or motor coach. They're for your convenience, and they save you a third in travel costs.

Southern Pacific



C. E. ALLEN, Agent

DURANT "75-65-55"



The most imposing array of motor cars W. C. Durant has ever offered

Unequaled beauty of finish, unapproached quality of construction and unsurpassed perfection of performance—thus we tell the

story of the new Durant Silver Anniversary Models—three distinct lines of sixes, each a leader in its class. For twenty-five years automotive history has been written around the name of W. C. Durant. For the past quarter of a century this outstanding genius of motordom has been one of the world's greatest contributors to modern industry. The new Silver Anniversary Models fittingly commemorate W. C. Durant's twenty-five years of service as a master motor car manufacturer. Since 1903, when he became the head

of Buick and laid the foundation for General Motors, W. C. Durant has ever been responsible for America's most sensational motor car values—for motor cars that start new trends.

Today the tradition of Durant quality is gloriously upheld. The new Silver Anniversary Models crown W. C. Durant's career. Rare expressions of beauty and mechanical excellence.

The Durant "75"—Masterpiece of the master builder. The Durant "65"—A revelation in compact construction. The Durant "55"—Acclaimed the finest six ever offered in its price class. Value.



DURANT Silver Anniversary Sixes

THE DURANT-STAR FOUR ALSO ON DISPLAY

Otto Erickson Co.

Washington County Distributors of STAR CARS—Beaverton, Oregon